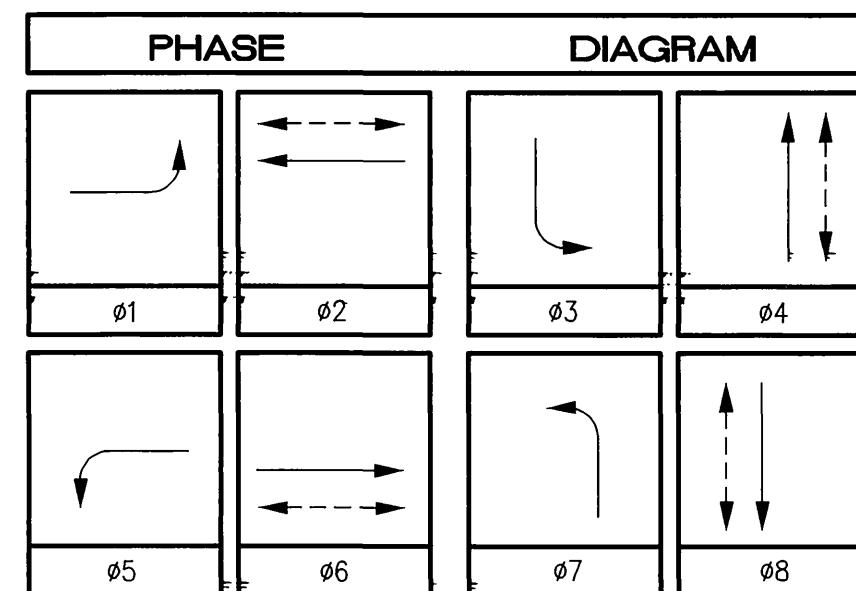


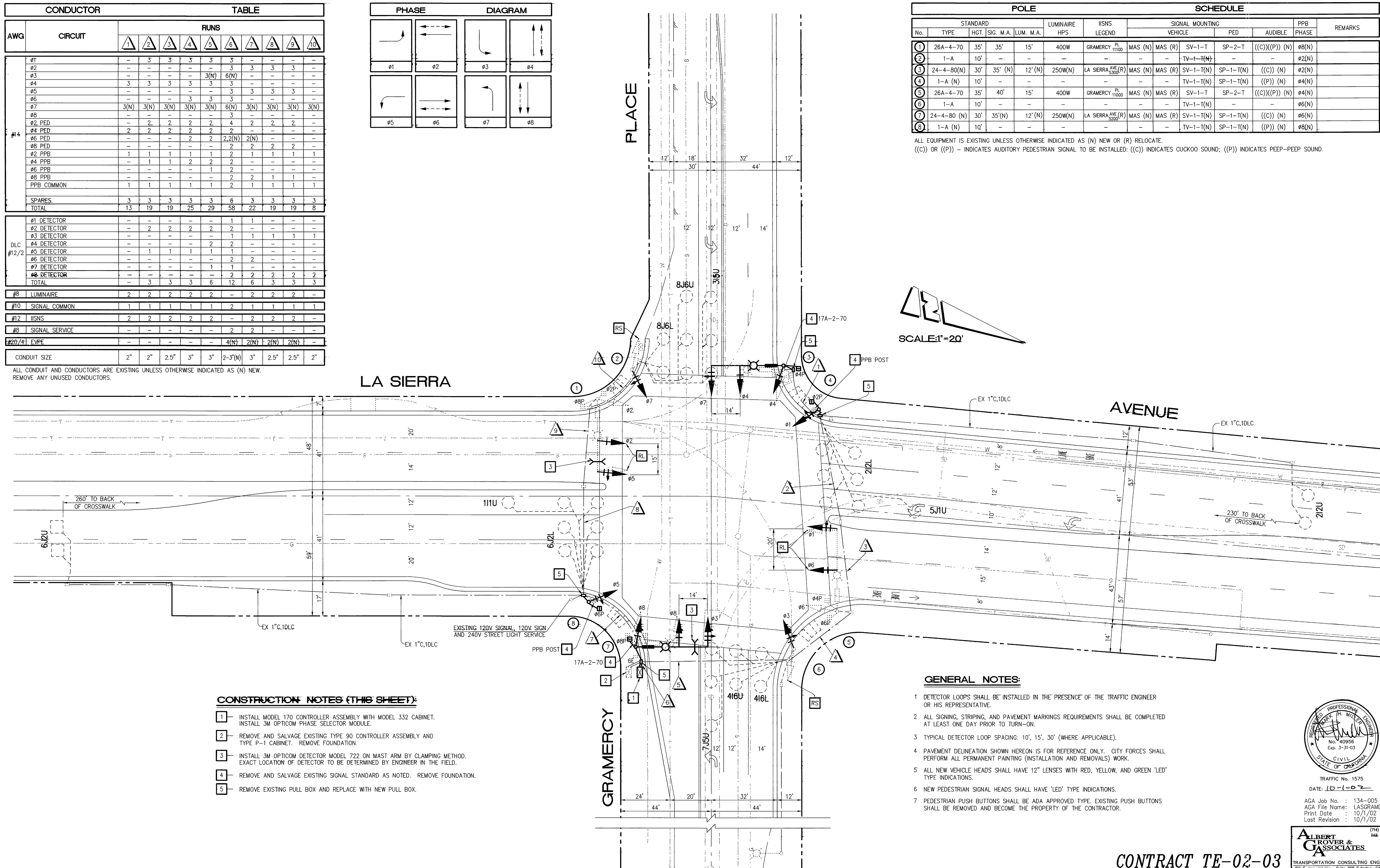
CONDUCTOR		TABLE									
AWG	CIRCUIT	RUNS									
		1	2	3	4	5	6	7	8	9	10
#1		-	3	3	3	3	3	-	-	-	-
#2		-	-	-	-	3	3	3	3	-	-
#3		-	-	-	-	3(N)	6(N)	-	-	-	-
#4		3	3	3	3	3	-	-	-	-	-
#5		-	-	-	-	3	3	3	3	-	-
#6		-	-	-	-	3	3	3	-	-	-
#7		3(N)	3(N)	3(N)	3(N)	3(N)	6(N)	3(N)	3(N)	3(N)	3(N)
#8		-	-	-	-	-	3	-	-	-	-
#2 PED		-	2	2	2	2	4	2	2	2	-
#4 PED		-	-	-	-	-	2	2	2	-	-
#6 PED		-	-	-	-	-	2	2	2	-	-
#8 PED		-	-	-	-	-	2	2	2	-	-
#2 PPB		1	1	1	1	1	2	1	1	1	1
#4 PPB		-	-	-	-	-	2	-	-	-	-
#6 PPB		-	-	-	-	-	2	-	-	-	-
#8 PPB		-	-	-	-	-	2	2	1	1	-
PPB COMMON		1	1	1	1	1	2	1	1	1	1
SPARES		3	3	3	3	3	6	3	3	3	3
TOTAL		13	19	19	25	29	58	22	19	19	8
#1 DETECTOR		-	-	-	-	-	1	1	-	-	-
#2 DETECTOR		-	2	2	2	2	2	-	-	-	-
#3 DETECTOR		-	-	-	-	-	1	1	1	1	1
#4 DETECTOR		-	-	-	-	-	2	2	-	-	-
#5 DETECTOR		-	1	1	1	1	1	-	-	-	-
#6 DETECTOR		-	-	-	-	-	2	2	-	-	-
#7 DETECTOR		-	-	-	-	-	1	1	-	-	-
#8 DETECTOR		-	-	-	-	-	2	2	2	2	2
TOTAL		-	3	3	3	6	12	6	3	3	3
#8 LUMINAIRE		2	2	2	2	2	-	2	2	2	-
#10 SIGNAL COMMON		1	1	1	1	1	2	1	1	1	1
#12 IISNS		2	2	2	2	2	-	2	2	2	-
#8 SIGNAL SERVICE		-	-	-	-	-	2	2	-	-	-
#20/21 EVPE		-	-	-	-	-	4(N)	2(N)	2(N)	2(N)	-
CONDUIT SIZE		2"	2"	2.5"	3"	3"	2-3"(N)	3"	2.5"	2.5"	2"

ALL CONDUIT AND CONDUCTORS ARE EXISTING UNLESS OTHERWISE INDICATED AS (N) NEW. REMOVE ANY UNUSED CONDUCTORS.



No.	POLE						SCHEDULE					REMARKS
	STANDARD		SIG. M.A.	LUM. M.A.	LUMINAIRE HPS	IISNS LEGEND	SIGNAL MOUNTING			PPB PHASE		
	TYPE	HGT.					VEHICLE	PED	AUDIBLE			
1	26A-4-70	35'	35'	15'	400W	GRAMERCY PL 1100	MAS (N)	MAS (R)	SV-1-T	SP-2-T	((C))((P)) (N)	08(N)
2	1-A	10'	-	-	-	-	-	-	TV-1-T(N)	-	-	02(N)
3	24-4-80(N)	30'	35' (N)	12' (N)	250W(N)	LA SIERRA AVE 5300(R)	MAS (N)	MAS (R)	SV-1-T(N)	SP-1-T(N)	((C)) (N)	02(N)
4	1-A (N)	10'	-	-	-	-	-	-	TV-1-T(N)	SP-1-T(N)	((P)) (N)	04(N)
5	26A-4-70	35'	40'	15'	400W	GRAMERCY PL 1100	MAS (N)	MAS (R)	SV-1-T	SP-2-T	((C))((P)) (N)	04(N)
6	1-A	10'	-	-	-	-	-	-	TV-1-T(N)	-	-	06(N)
7	24-4-80 (N)	30'	35' (N)	12' (N)	250W(N)	LA SIERRA AVE 5200(R)	MAS (N)	MAS (R)	SV-1-T(N)	SP-1-T(N)	((C)) (N)	06(N)
8	1-A (N)	10'	-	-	-	-	-	-	TV-1-T(N)	SP-1-T(N)	((P)) (N)	08(N)

ALL EQUIPMENT IS EXISTING UNLESS OTHERWISE INDICATED AS (N) NEW OR (R) RELOCATE. ((C)) OR ((P)) - INDICATES AUDITORY PEDESTRIAN SIGNAL TO BE INSTALLED: ((C)) INDICATES CUCKOO SOUND; ((P)) INDICATES PEEP-PEEP SOUND.



CONSTRUCTION NOTES (THIS SHEET):

- INSTALL MODEL 170 CONTROLLER ASSEMBLY WITH MODEL 332 CABINET. INSTALL 3M OPTICOM PHASE SELECTOR MODULE.
- REMOVE AND SALVAGE EXISTING TYPE 90 CONTROLLER ASSEMBLY AND TYPE P-1 CABINET. REMOVE FOUNDATION.
- INSTALL 3M OPTICOM DETECTOR MODEL 722 ON MAST ARM BY CLAMPING METHOD. EXACT LOCATION OF DETECTOR TO BE DETERMINED BY ENGINEER IN THE FIELD.
- REMOVE AND SALVAGE EXISTING SIGNAL STANDARD AS NOTED. REMOVE FOUNDATION.
- REMOVE EXISTING PULL BOX AND REPLACE WITH NEW PULL BOX.

GENERAL NOTES:

- DETECTOR LOOPS SHALL BE INSTALLED IN THE PRESENCE OF THE TRAFFIC ENGINEER OR HIS REPRESENTATIVE.
- ALL SIGNING, STRIPING, AND PAVEMENT MARKINGS REQUIREMENTS SHALL BE COMPLETED AT LEAST ONE DAY PRIOR TO TURN-ON.
- TYPICAL DETECTOR LOOP SPACING: 10', 15', 30' (WHERE APPLICABLE).
- PAVEMENT DELINEATION SHOWN HEREON IS FOR REFERENCE ONLY. CITY FORCES SHALL PERFORM ALL PERMANENT PAINTING (INSTALLATION AND REMOVALS) WORK.
- ALL NEW VEHICLE HEADS SHALL HAVE 12" LENSES WITH RED, YELLOW, AND GREEN 'LED' TYPE INDICATIONS.
- NEW PEDESTRIAN SIGNAL HEADS SHALL HAVE 'LED' TYPE INDICATIONS.
- PEDESTRIAN PUSH BUTTONS SHALL BE ADA APPROVED TYPE. EXISTING PUSH BUTTONS SHALL BE REMOVED AND BECOME THE PROPERTY OF THE CONTRACTOR.

Underground Service Alert
 Call: TOLL FREE
 1-800-227-2600
 TWO WORKING DAYS BEFORE YOU DIG

CITY OF RIVERSIDE, CALIFORNIA DEPARTMENT OF PUBLIC WORKS			TRAFFIC SIGNAL PLAN		ACCOUNT NO.
APPROVED BY: <i>[Signature]</i> DATE: 10/1/02			APPROVED BY: <i>[Signature]</i> DATE: 10/1/02		X-454A
INSPECTION: 10/1/02			PUBLIC WORKS DIRECTOR		
DESIGNED BY: _____			DRAWN BY: _____		SHEET 9 OF 9
CHECKED BY: _____			DATE: 10/1/02		



TRAFFIC No. 1575
 DATE: 10-1-02
 AGA Job No.: 134-005
 AGA File Name: LASGRAMD
 Print Date: 10/1/02
 Last Revision: 10/1/02

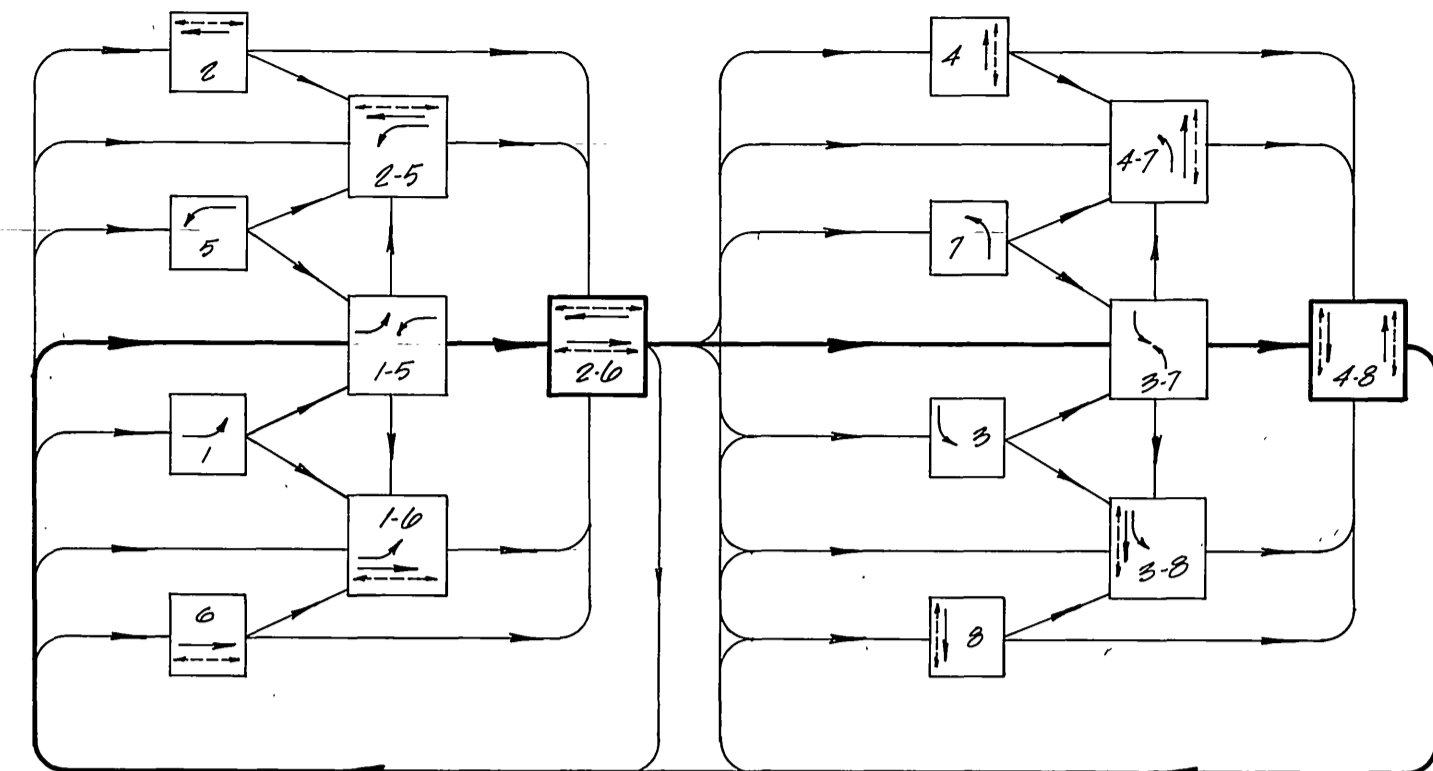
ALBERT GASS & ASSOCIATES
 TRANSPORTATION CONSULTING ENGINEERS
 211 E. Imperial Hwy., Suite 208 Fullerton, CA 92835
 (714) 992-2990
 FAX: 992-2983

CONTRACT TE-02-03

LA SIERRA AVENUE AND GRAMERCY PLACE

HORIZ. SCALE: 1"= 20' VERT. SCALE: 1"= -

PHASE DIAGRAM



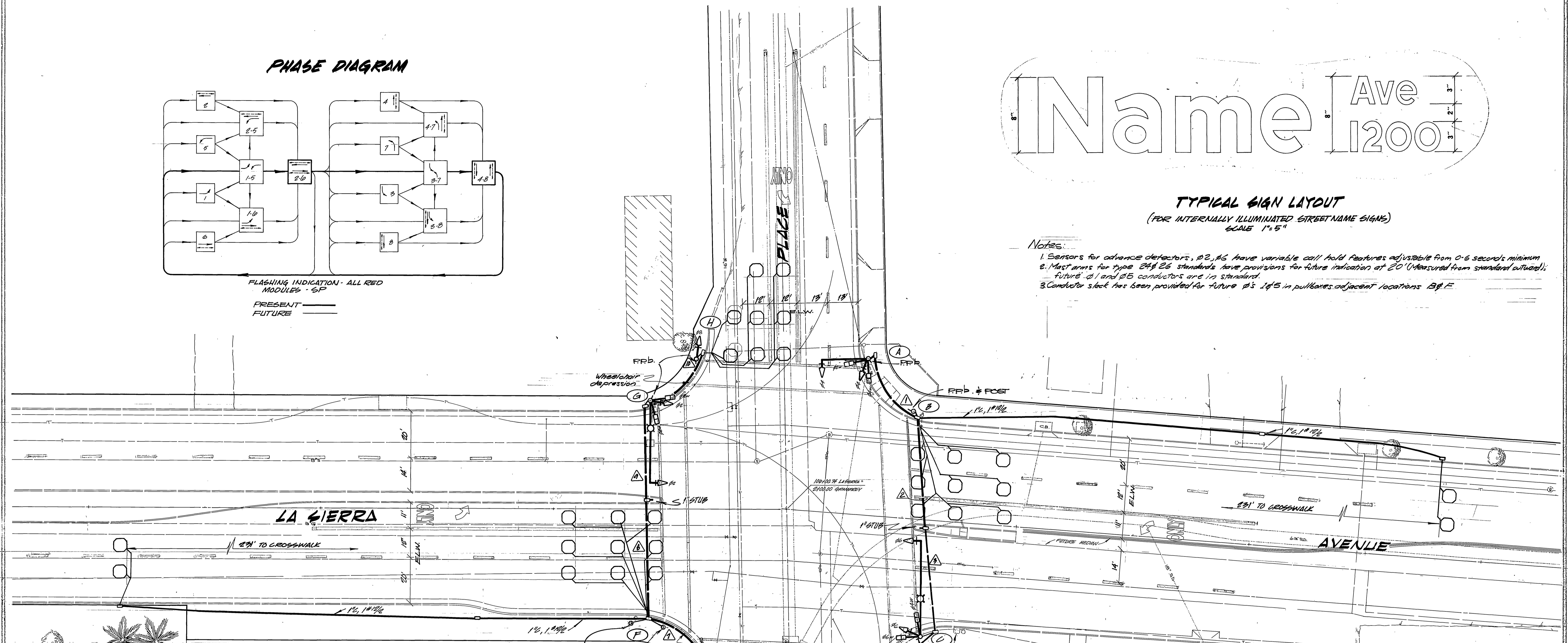
FLASHING INDICATION - ALL RED
MODULES - 5P
PRESENT
FUTURE



TYPICAL SIGN LAYOUT
(FOR INTERNALLY ILLUMINATED STREET NAME SIGNS)
SCALE 1" = 5'

Notes:

- Sensors for advance detectors, P2, P6 have variable call hold features adjustable from 0-6 seconds minimum
- Most arms for type 248 26 standards have provisions for future indication at 20' (Measured from standard outward); future A1 and B5 conductors are in standard
- Conductor slack has been provided for future P's 14, 15 in pullboxes adjacent locations B & F



CONDUIT SCHEDULE

CONTRN FUNCTION	CONDUIT SIZE - INCHES	MATERIAL	CONDUIT RUN																	
			1	2	3	4	5	6	7	8	9	10								
VEHICLE HEADS	#14	TW		3	3	3	3	3	3	3	3	3	3	3	3	3	3	3	3	3
PEDESTRIAN HEADS	#2		2	2	2	2	2	2	2	2	2	2	2	2	2	2	2	2	2	2
PEDESTRIAN BUTTONS	#2		1	1	1	1	1	1	1	1	1	1	1	1	1	1	1	1	1	1
SPARES DETECTORS	#10 1/2	RE	3	3	3	3	3	3	3	3	3	3	3	3	3	3	3	3	3	3
12V COMMON	#14	TW	1	1	1	1	1	1	1	1	1	1	1	1	1	1	1	1	1	1
24V COMMON	10		1	1	1	1	1	1	1	1	1	1	1	1	1	1	1	1	1	1
TOT ILL. ST. NAME SIGN	12		2	2	2	2	2	2	2	2	2	2	2	2	2	2	2	2	2	2
LUMINAIRE	8	THW	2	2	2	2	2	2	2	2	2	2	2	2	2	2	2	2	2	2
SIGNAL SERVICE	8	THW																		
TOTALS	#14	TW	10	10	10	10	10	10	10	10	10	10	10	10	10	10	10	10	10	10
	#10 1/2	RE	3	3	3	3	3	3	3	3	3	3	3	3	3	3	3	3	3	3
	10	TW	1	1	1	1	1	1	1	1	1	1	1	1	1	1	1	1	1	1
	12	TW	2	2	2	2	2	2	2	2	2	2	2	2	2	2	2	2	2	2
	8	THW	2	2	2	2	2	2	2	2	2	2	2	2	2	2	2	2	2	2
CONDUIT SIZE			2"	2"	2 1/2"	3"	3"	3"	3"	3"	3"	3"	3"	3"	3"	3"	3"	3"	3"	3"

120V SIGNAL AND SIGN SERVICE AND 240V. FLIGHT SERVICE PER SID DWG. NO. 612 AND NO. 669.

TYPE 90 CONTROLLER IN TYPE 'P' CABINET. #10 PULL BOX

EQUIPMENT SCHEDULE

LOCATION	STANDARD	VEHICLE HEADS			PEDESTRIAN HEADS			LUMINAIRE WATTAGE	INT ILLUM STREET NAME SIGN	REMARKS
		HEAD	MOUNTING	BACK PLATE	HEAD	MOUNTING	PPB			
A	17A-2-70 20' SA-151A	1W 3C (12)	MAS	1	2W 2C	SPRT	1	LA SIERRA 8500		
B	PED POST						1			
C	26A-4-70 40' SA-151A	1W 3C (12)	MAS	1	2W 2C	SPRT	1	GRAMERCY 11000		
D	TYPE 1A	1W 3C	TK-T	1			1			
E	17A-2-70 20' SA-151A	1W 3C (12)	MAS	1	2W 2C	SPRT	1	LA SIERRA 8500		
F	PED POST						1			
G	26A-4-70 40' SA-151A	1W 3C (12)	MAS	1	2W 2C	SPRT	1	GRAMERCY 11000		
H	TYPE 1A	1W 3C	TK-T	1			1			

CITY OF RIVERSIDE PUBLIC WORKS DEPARTMENT

La Sierra Avenue and Gramercy Place

TRAFFIC SIGNALS

ACCOUNT NO. 130-1710-3211-00

X-454

SHEET 1 OF 1

FAU. M-7011(3)

APPROVED BY: [Signature] DATE: 3/30/78

DESIGNED BY: [Signature] DRAWN BY: [Signature] CHECKED BY: [Signature]