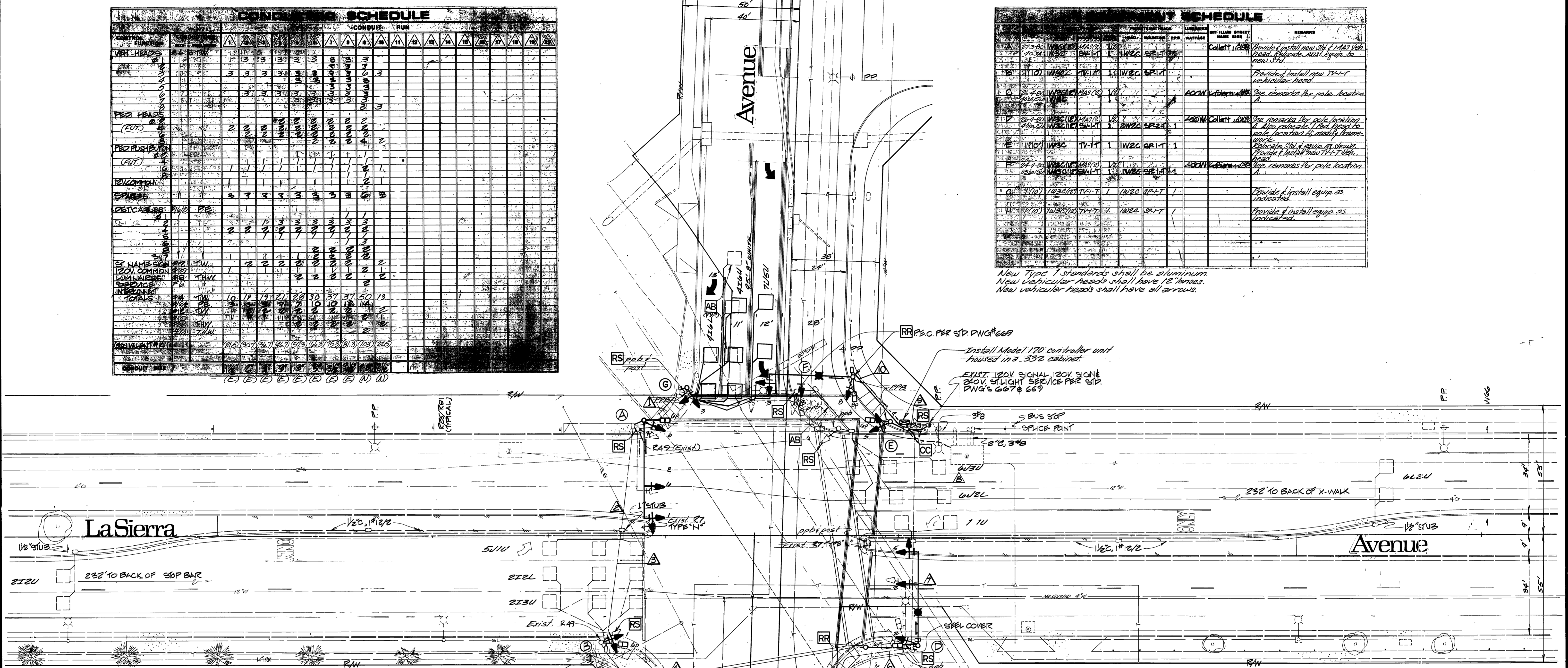


CONDUIT RUN SCHEDULE		CONDUIT RUN															
CONDUIT RUN	CONDUIT RUN	1	2	3	4	5	6	7	8	9	10	11	12	13	14	15	16
VEH HEADS	11/10	3	3	3	3	3	3	3	3	3	3	3	3	3	3	3	3
PER HEADS	11/10	3	3	3	3	3	3	3	3	3	3	3	3	3	3	3	3
PER PUSH	11/10	3	3	3	3	3	3	3	3	3	3	3	3	3	3	3	3
PER COMMON	11/10	3	3	3	3	3	3	3	3	3	3	3	3	3	3	3	3
PER CABLES	11/10	3	3	3	3	3	3	3	3	3	3	3	3	3	3	3	3
ST NAME	11/10	3	3	3	3	3	3	3	3	3	3	3	3	3	3	3	3
COMMON	11/10	3	3	3	3	3	3	3	3	3	3	3	3	3	3	3	3
PER SERVICE	11/10	3	3	3	3	3	3	3	3	3	3	3	3	3	3	3	3
PER SIGNALS	11/10	3	3	3	3	3	3	3	3	3	3	3	3	3	3	3	3
PER EQUALIZATION	11/10	3	3	3	3	3	3	3	3	3	3	3	3	3	3	3	3

CONDUIT RUN SCHEDULE		CONDUIT RUN															
CONDUIT RUN	CONDUIT RUN	1	2	3	4	5	6	7	8	9	10	11	12	13	14	15	16
VEH HEADS	11/10	3	3	3	3	3	3	3	3	3	3	3	3	3	3	3	3
PER HEADS	11/10	3	3	3	3	3	3	3	3	3	3	3	3	3	3	3	3
PER PUSH	11/10	3	3	3	3	3	3	3	3	3	3	3	3	3	3	3	3
PER COMMON	11/10	3	3	3	3	3	3	3	3	3	3	3	3	3	3	3	3
PER CABLES	11/10	3	3	3	3	3	3	3	3	3	3	3	3	3	3	3	3
ST NAME	11/10	3	3	3	3	3	3	3	3	3	3	3	3	3	3	3	3
COMMON	11/10	3	3	3	3	3	3	3	3	3	3	3	3	3	3	3	3
PER SERVICE	11/10	3	3	3	3	3	3	3	3	3	3	3	3	3	3	3	3
PER SIGNALS	11/10	3	3	3	3	3	3	3	3	3	3	3	3	3	3	3	3
PER EQUALIZATION	11/10	3	3	3	3	3	3	3	3	3	3	3	3	3	3	3	3



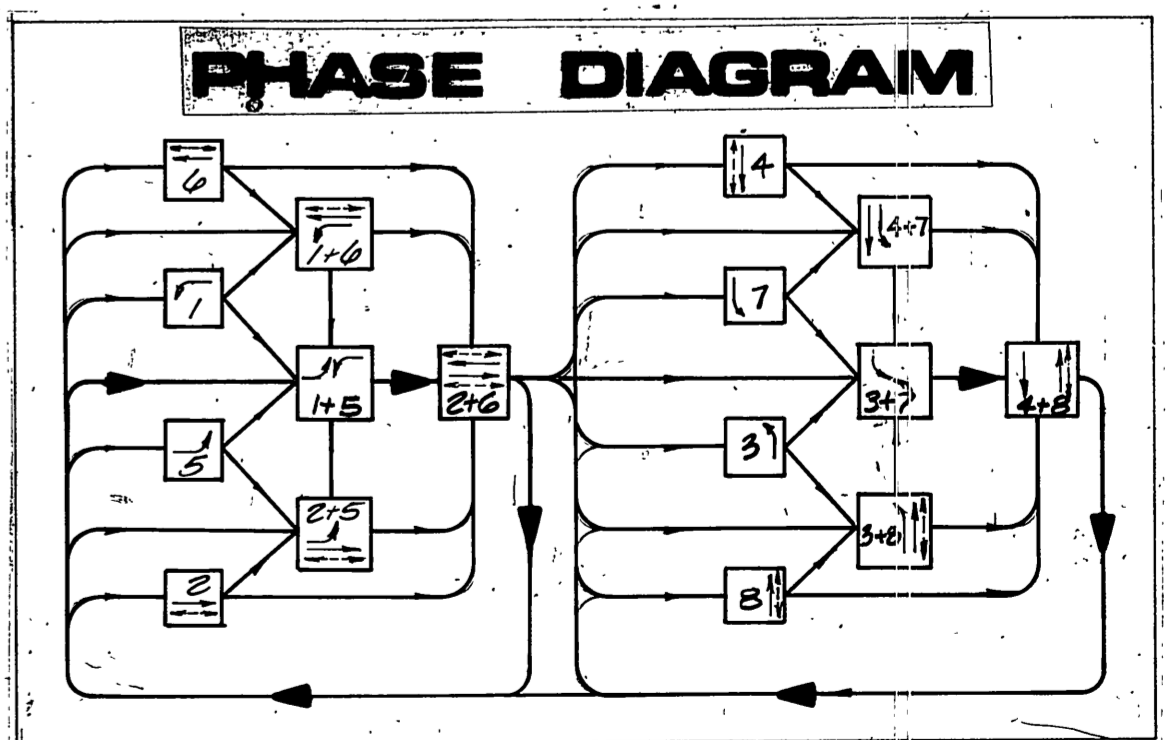
- GENERAL NOTES:**
- Detector loops shall be installed in the presence of the Traffic Engineer or his representative.
 - Abandoned foundations shall be completely removed.
 - Refer to Street Improvement plan No. E-3088 for street improvements. Refer to sh. 9 of 9 for Left-turn lane pavement delineations.

- CONSTRUCTION NOTES & LEGEND:**
- The Contractor shall remove all conflicting existing pavement delineations.
 - The Contractor shall restore all pavement delineation obliterated by construction and perform all painting (pavement delineation) shown on the plan.

CHANNELS	LOOP DESIGNATION	NUMBER OF LOOPS	FEATURES
1	1I1U	3	
2	5U1U	3	
1	6U2U	2	● ■
2	6U2L	3	*
1	6U3U	3	*
2	8I2U	2	● ■
1	8I2L	3	*
2	8I3U	3	*
1	3I5U	3	
2	7I5U	3	
1	4I6U	3	
2	4I6L	2	▲
1	8U6U	3	
2	8U6L	2	▲

Detectors shall be 2-channel rack-mounted.

- Sampling
- Extension (Call-Hold)
- ▲ Delay
- * Detector Disconnected (See Special Provisions)



CC Applicable for both Run and service runs remove No. 6 pullbox.

ENGINEER IN RESPONSIBLE CHARGE
BARRY BECK
 R.C.E. No. 20900 expires 9/30/93
 DATE 7/9/90

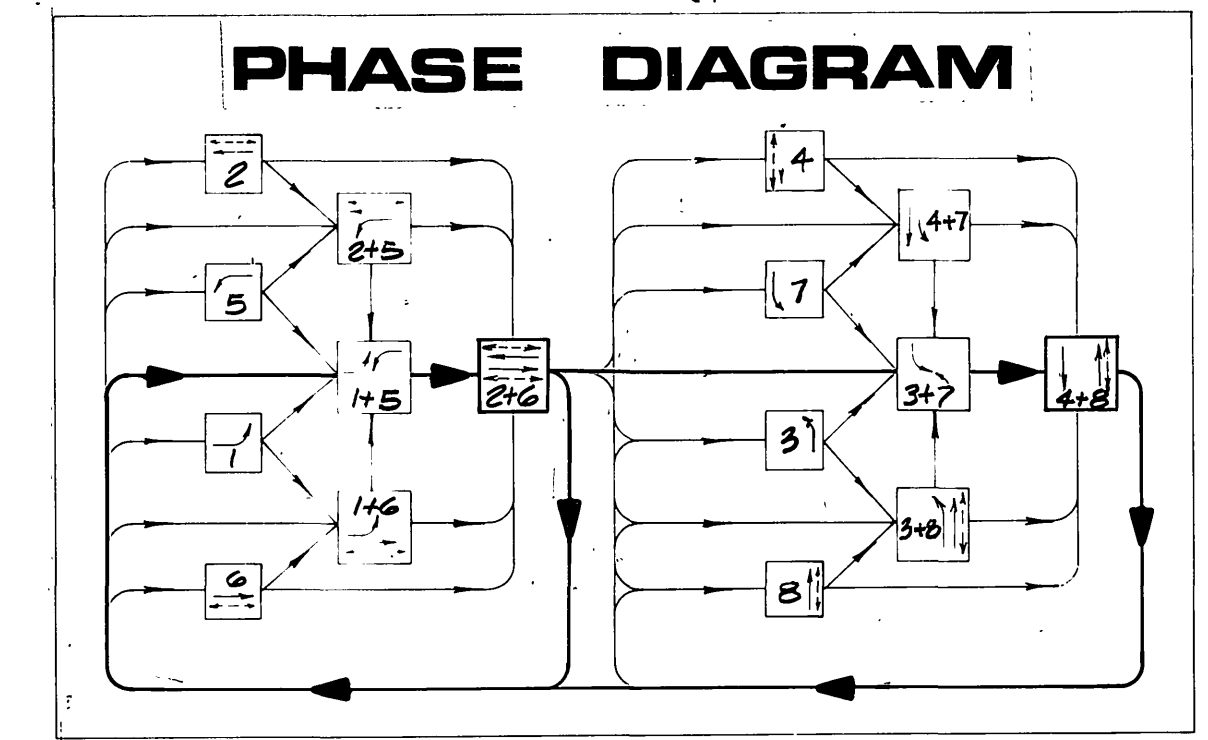
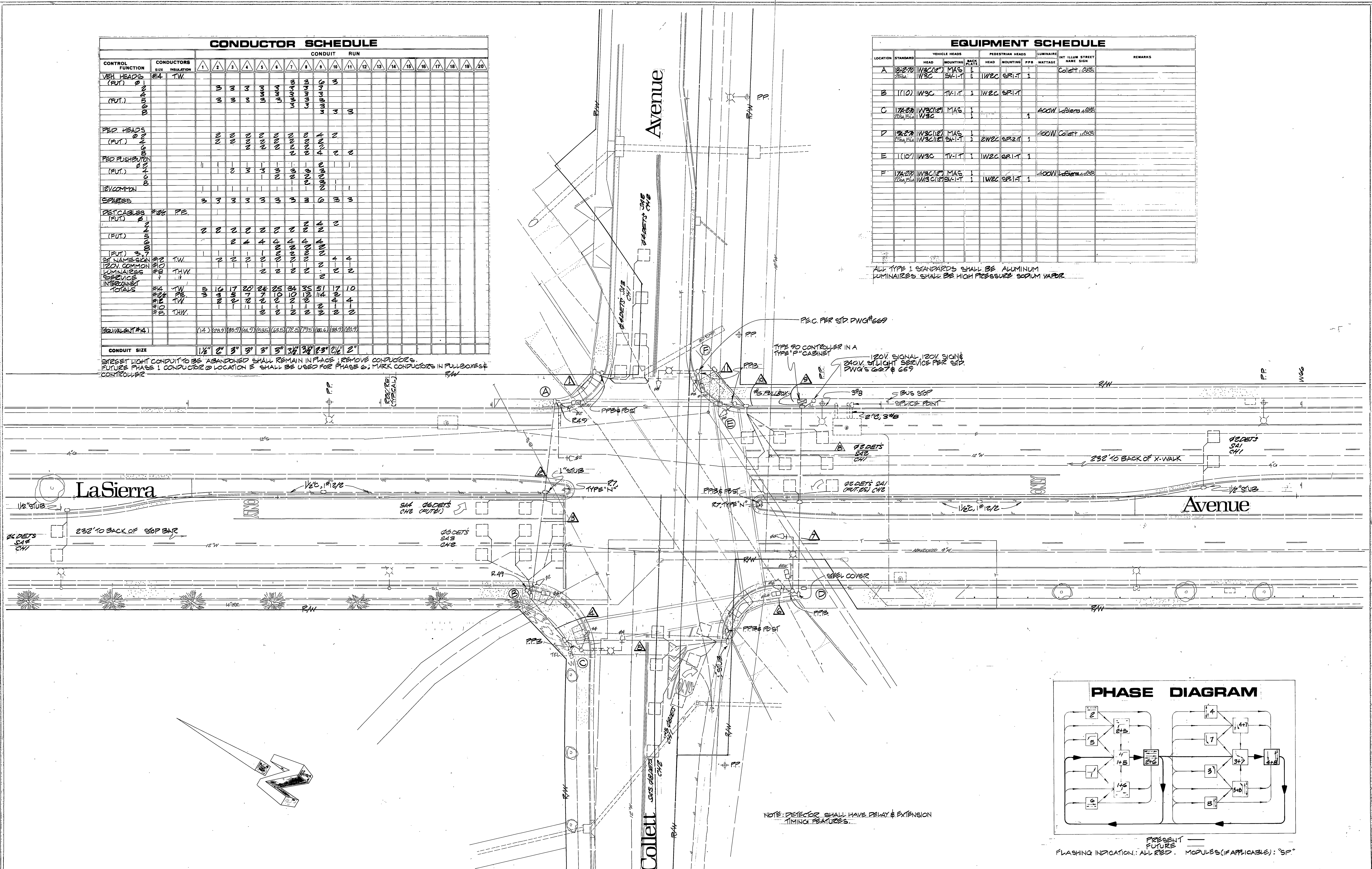
CITY OF RIVERSIDE PUBLIC WORKS DEPARTMENT			TRAFFIC SIGNAL REVISION La Sierra at Avenue Collett at Avenue		ACCOUNT NO. X-456
APPROVED BY PRINCIPAL ENGINEER PANK DEPARTMENT TRAFFIC DIVISION CHIEF P.W. ENGINEER PUBLIC UTILITIES	7/3/90 6-29-90 7-4-90 7-3-90	PUBLIC WORKS DIRECTOR DATE 7/9/90	SHEET 1 OF 1 FILE NO.		

CONDUCTOR SCHEDULE		CONDUIT RUN																			
CONTROL FUNCTION	CONDUCTORS	1	2	3	4	5	6	7	8	9	10	11	12	13	14	15	16	17	18	19	20
VEH HEADS (FUT.)	#14 TW																				
PER HEADS (FUT.)	#14 TW																				
PER PUSHBUT (FUT.)	#14 TW																				
PER COMMON (FUT.)	#14 TW																				
SPARES (FUT.)	#14 TW																				
DET CABLES (FUT.)	#14 TW																				
ST. NAME SIGN (FUT.)	#14 TW																				
120V COMMON LUMINAIRE SERVICE INTERCONNECT	#14 TW																				
TOTALS	#14 TW	5	16	17	20	24	25	34	35	51	17	10									
CONDUIT SIZE		1 1/2"	2"	3"	3"	3"	3"	3 1/2"	3 1/2"	3 1/2"	2"	2"									

STREET LIGHT CONDUIT TO BE ABANDONED SHALL REMAIN IN PLACE; REMOVE CONDUCTORS. FUTURE PHASE I CONDUCTOR @ LOCATION E SHALL BE USED FOR PHASE G; MARK CONDUCTORS IN PULLBOXES & CONTROLLER.

EQUIPMENT SCHEDULE									
LOCATION	STANDARD	VEHICLE HEADS	PEDESTRIAN HEADS	LUMINAIRE	INT ILLUM	STREET NAME SIGN	REMARKS		
A	1A-270	WBC(12) MAS SW-T	WBC SW-T	400W		Collett Ave			
B	1(10)	WBC	TV-T	400W					
C	1A-270	WBC(12) MAS SW-T	WBC SW-T	400W		La Sierra Ave			
D	1A-270	WBC(12) MAS SW-T	WBC SW-T	400W		Collett Ave			
E	1(10)	WBC	TV-T	400W					
F	1A-270	WBC(12) MAS SW-T	WBC SW-T	400W		La Sierra Ave			

ALL TYPE I STANDARDS SHALL BE ALUMINUM LUMINAIRE SHALL BE HIGH PRESSURE SODIUM VAPOR.



NOTE: DETECTOR SHALL HAVE DELAY & EXTENSION TIMING FEATURES.

FLASHING INDICATION: ALL RED. MODULES (IF APPLICABLE): "SP"

CITY OF RIVERSIDE PUBLIC WORKS DEPARTMENT		TRAFFIC SIGNAL La Sierra at Avenue Collett at Avenue		ACCOUNT NO. 30-576-398-07 X-456
DESIGNED BY: <i>[Signature]</i> DRAWN BY: <i>[Signature]</i> CHECKED BY: <i>[Signature]</i>	APPROVED BY: <i>[Signature]</i> TRAFFIC DIVISION: <i>[Signature]</i> CHIEF P. W. ENGINEER: <i>[Signature]</i> PUBLIC UTILITIES: <i>[Signature]</i>	DATE: 7/21/80	HORIZ. SCALE: 1" = 20' VERT. SCALE: 1" = 10'	SHEET _____ OF _____ FILE NO. _____