

CONDUCTOR		TABLE								
AWG	CIRCUIT	RUNS								
		1	2	3	4	5	6	7	8	9
#1		-	-	-	3(N)	3(N)	3(N)	-	-	-
#2		3	3	3	3	3	6	3	3	3
#4		-	-	3	3	3	6	3	3	3
#5		3(N)	3(N)	3(N)	3(N)	3(N)	6(N)	3(N)	3(N)	3(N)
#6		-	-	3	3	3	6	3	-	-
#8		-	-	3	3	3	6	3	-	-
#2 PED		2	2	2	2	2	4	2	2	2
#4 PED		-	2	2	2	2	4	2	2	2
#6 PED		-	-	-	-	-	2	2	2	2
#8 PED		-	-	2	2	2	4	2	-	-
#2 PPB		-	1	1	1	1	1	1	-	-
#4 PPB		1	1	1	1	1	2	1	1	1
#6 PPB		-	-	-	-	-	1	1	1	-
#8 PPB		-	-	-	-	-	1	1	-	-
PPB COMMON		1	1	1	1	1	2	1	1	1
SPARES		3	3	3	3	3	6	3	3	3
TOTAL		13	16	24	31	31	55	24	19	13

TYPE B DLC									
	1	2	3	4	5	6	7	8	9
#1 DETECTOR	1	1	1	1	1	1	-	-	-
#2 DETECTOR	-	-	-	3	3	3	-	-	-
#4 DETECTOR	-	1	1	1	1	1	-	-	-
#5 DETECTOR	-	-	-	-	1	1	-	-	-
#6 DETECTOR	-	-	-	-	-	3	3	3	3
#8 DETECTOR	-	-	-	-	-	1	1	-	-
TOTAL	1	2	2	5	6	10	4	3	3

#10									
LUMINAIRE	2	2	2	2	2	-	2	2	-
SIGNAL COMMON	1	1	1	1	1	2	1	1	1
TOTAL	3	3	3	3	3	2	3	3	3

#12									
IISNS	2	2	2	2	2	-	2	2	-

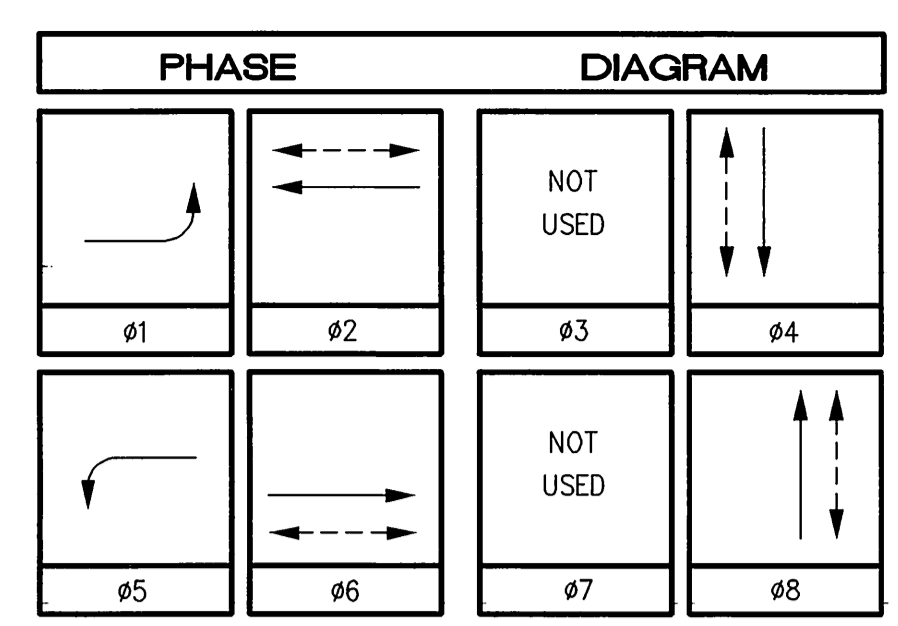
#8									
SIGNAL SERVICE	-	-	-	-	-	2	-	-	-

INTERCONNECT CABLE										
1	2	-	-	-	-	-	-	-	-	

#20/41									
EVPE	1(N)	1(N)	1(N)	1(N)	1(N)	2(N)	-	-	-

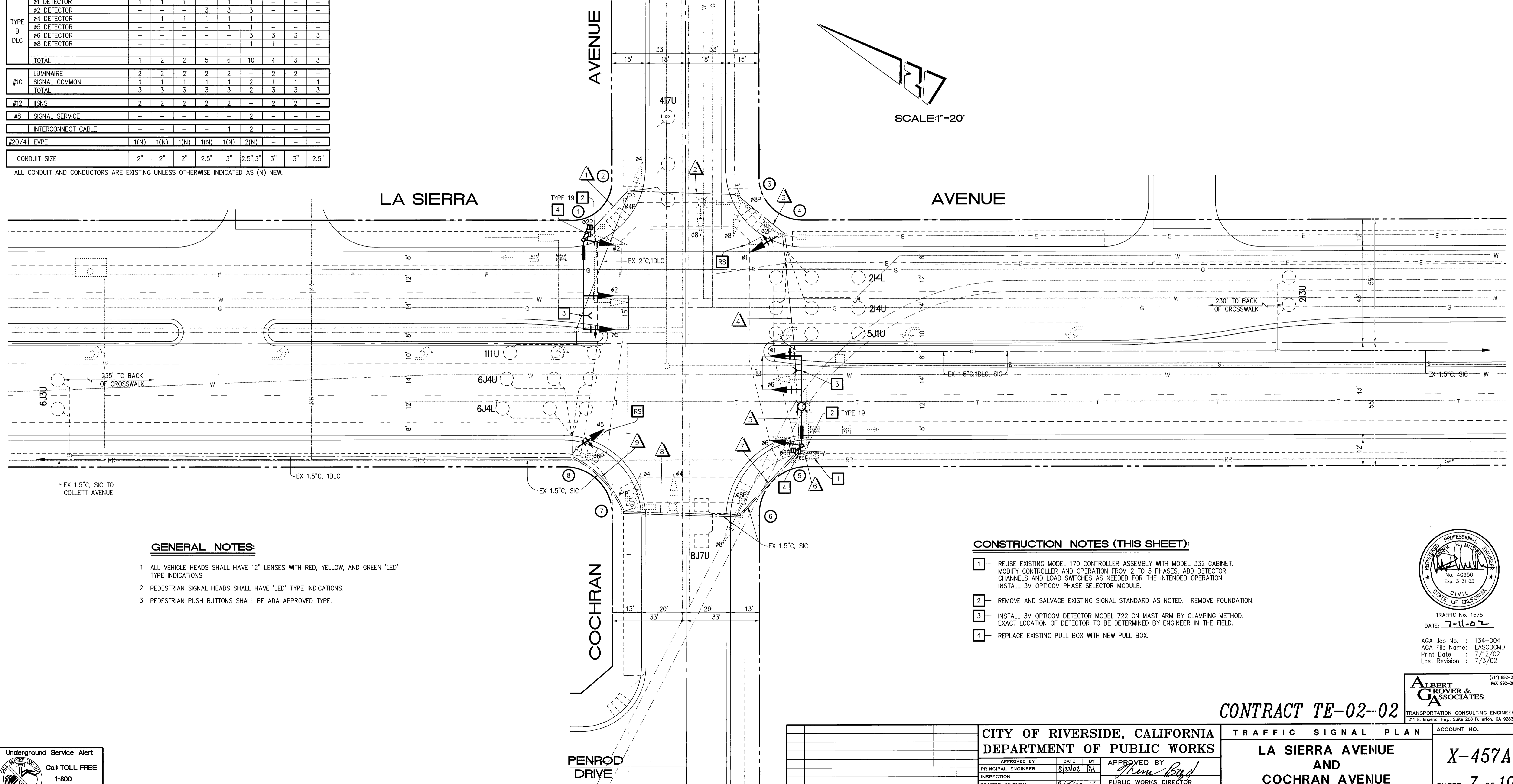
CONDUIT SIZE	2"	2"	2"	2.5"	3"	2.5", 3"	3"	3"	2.5"

ALL CONDUIT AND CONDUCTORS ARE EXISTING UNLESS OTHERWISE INDICATED AS (N) NEW.



No.	TYPE	STANDARD				LUMINAIRE HPS	IISNS LEGEND	SIGNAL MOUNTING				PPB PHASE	REMARKS
		HGT.	SIG. M.A.	LUM. M.A.	VEHICLE								
					VEHICLE			PED	AUDIBLE				
1	27-4-80(N)	17'	40'(N)	-	-	Cochran Ave 1100(R)	MAS(N)	MAS(R)	SV-1-T(N)	SP-1-T(R)	((P)) (N)	ø4(N)	
2	1-A	10'	-	-	-	-	-	-	TV-1-T	SP-1-T	((C)) (N)	ø2	
3	17-2-70	30'	18'	15'	250W	La Sierra 4100	-	MAS	SV-1-T	SP-1-T	((C)) (N)	ø2	
4	1-A	10'	-	-	-	-	-	-	TV-1-T(N)	SP-1-T	((P)) (N)	ø8	
5	26-4-80(N)	30'	40'(N)	15'(N)	250W(N)	Cochran Ave 1100(R)	MAS(N)	MAS(R)	SV-1-T(N)	SP-1-T(R)	((P)) (N)	ø8(N)	
6	1-A	10'	-	-	-	-	-	-	TV-1-T	SP-1-T	((C)) (N)	ø6	
7	17-2-70	30'	18'	15'	250W	La Sierra 4200	-	MAS	SV-1-T	SP-1-T	((C)) (N)	ø6	
8	1-A	10'	-	-	-	-	-	-	TV-1-T(N)	SP-1-T	((P)) (N)	ø4	

ALL EQUIPMENT IS EXISTING UNLESS OTHERWISE INDICATED AS (N) NEW, OR (R) RELOCATE.
((C)) OR ((P)) - INDICATES AUDITORY PEDESTRIAN SIGNAL TO BE INSTALLED; ((C)) INDICATES CUCKOO SOUND; ((P)) INDICATES PEEP-PEEP SOUND.



GENERAL NOTES:

- ALL VEHICLE HEADS SHALL HAVE 12" LENSES WITH RED, YELLOW, AND GREEN 'LED' TYPE INDICATIONS.
- PEDESTRIAN SIGNAL HEADS SHALL HAVE 'LED' TYPE INDICATIONS.
- PEDESTRIAN PUSH BUTTONS SHALL BE ADA APPROVED TYPE.

CONSTRUCTION NOTES (THIS SHEET):

- REUSE EXISTING MODEL 170 CONTROLLER ASSEMBLY WITH MODEL 332 CABINET. MODIFY CONTROLLER AND OPERATION FROM 2 TO 5 PHASES, ADD DETECTOR CHANNELS AND LOAD SWITCHES AS NEEDED FOR THE INTENDED OPERATION. INSTALL 3M OPTICOM PHASE SELECTOR MODULE.
- REMOVE AND SALVAGE EXISTING SIGNAL STANDARD AS NOTED. REMOVE FOUNDATION.
- INSTALL 3M OPTICOM DETECTOR MODEL 722 ON MAST ARM BY CLAMPING METHOD. EXACT LOCATION OF DETECTOR TO BE DETERMINED BY ENGINEER IN THE FIELD.
- REPLACE EXISTING PULL BOX WITH NEW PULL BOX.



TRAFFIC No. 1575
DATE: 7-11-02
AGA Job No. : 134-004
AGA File Name: LASCOCMD
Print Date : 7/12/02
Last Revision : 7/3/02

CONTRACT TE-02-02

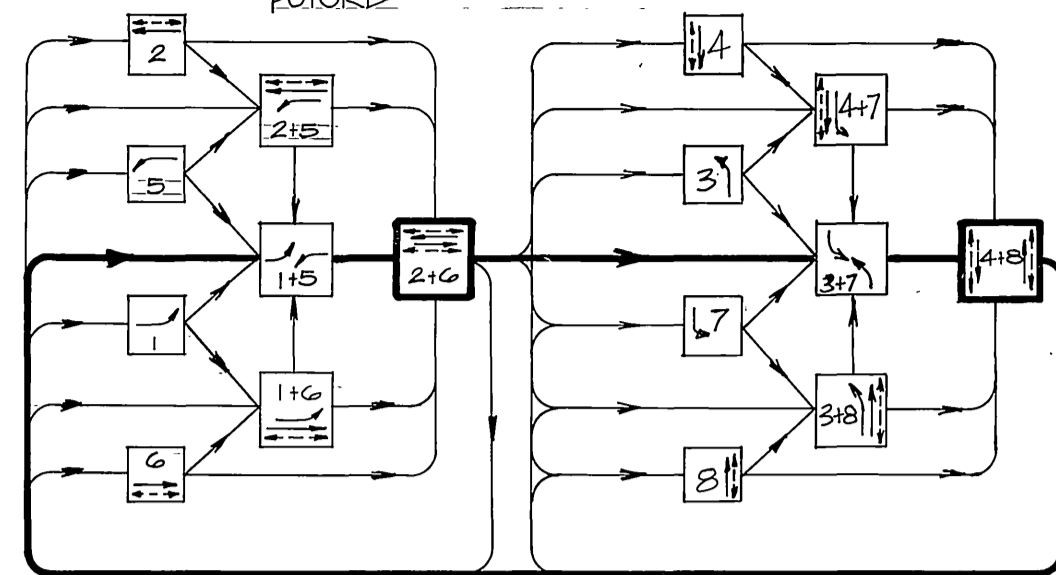
CITY OF RIVERSIDE, CALIFORNIA DEPARTMENT OF PUBLIC WORKS		TRAFFIC SIGNAL PLAN		ACCOUNT NO.
APPROVED BY	DATE	BY	DATE	
PRINCIPAL ENGINEER	8/2/02	DR		
INSPECTION				
TRAFFIC DIVISION	8/15/02	Z		
CHIEF P. W. ENGINEER				
PUBLIC UTILITIES	8/16/02	CS		
DESIGNED BY		DRAWN BY	CHECKED BY	DATE
				8/2/02

LA SIERRA AVENUE AND COCHRAN AVENUE
X-457A
SHEET 7 of 10

Underground Service Alert
Call: TOLL FREE
1-800
422-4133
TWO WORKING DAYS BEFORE YOU DIG

ALBERT ROVER & ASSOCIATES
TRANSPORTATION CONSULTING ENGINEERS
211 E. Imperial Hwy., Suite 208 Fullerton, CA 92835
(714) 992-2990
FAX 992-2993

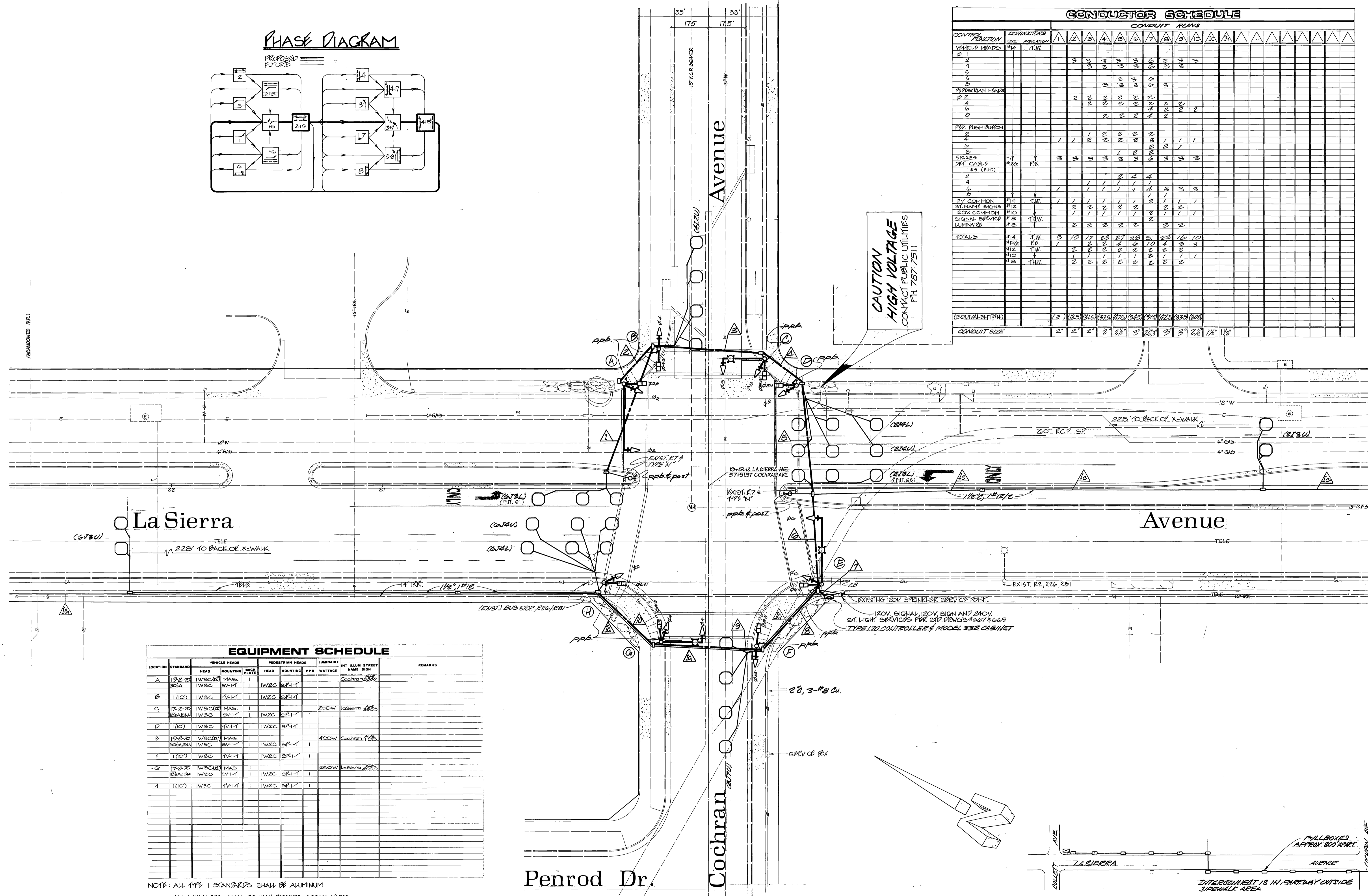
PHASE DIAGRAM



CONDUCTOR SCHEDULE

CONDUCTOR FUNCTION	CONDUCTORS SIZE INSULATION	CONDUIT RUNS															
		1	2	3	4	5	6	7	8	9	10	11	12	13	14	15	16
VEHICLE HEADS	#14 T.W.																
1			3	3	3	3	3	6	3	3							
2																	
3																	
4																	
5																	
6																	
7																	
8																	
PEDESTRIAN HEADS																	
1			2	2	2	2	2	2	2	2	2	2	2	2	2	2	
2																	
3																	
4																	
5																	
6																	
7																	
8																	
PPR PUSH BUTTON																	
1			1	1	2	2	2	2	2	1	1	1	1	1	1	1	
2																	
3																	
4																	
5																	
6																	
7																	
8																	
SPARES																	
12V COMMON	#14 T.W.		1	1	1	1	1	1	1	1	1	1	1	1	1	1	
12V COMMON	#12 T.W.		1	1	1	1	1	1	1	1	1	1	1	1	1	1	
120V COMMON	#10 T.W.		1	1	1	1	1	1	1	1	1	1	1	1	1	1	
SIGNAL SERVICE	#8 T.W.		2	2	2	2	2	2	2	2	2	2	2	2	2	2	
LUMINAIRE	#8 T.W.		2	2	2	2	2	2	2	2	2	2	2	2	2	2	
TOTALS	#14 T.W.		5	10	17	23	27	28	5	22	10	10					
	#12 T.W.		1	2	2	2	2	2	2	2	2	2					
	#10 T.W.		1	1	1	1	1	1	1	1	1	1					
	#8 T.W.		2	2	2	2	2	2	2	2	2	2					
(EQUIVALENT#)			(8)	(8.5)	(15)	(17.5)	(23.5)	(24.5)	(9.5)	(22.5)	(32.5)	(22.5)					
CONDUIT SIZE			2"	2"	2"	2"	2 1/4"	3"	2 1/2"	3"	3"	2 1/2"	1 1/2"	1 1/2"			

CAUTION
HIGH VOLTAGE
CONTACT PUBLIC UTILITIES
PH 787-7511



EQUIPMENT SCHEDULE

LOCATION	STANDARD	VEHICLE HEADS	PEDESTRIAN HEADS	LUMINAIRE	INT ILLUM STREET NAME SIGN	REMARKS
A	19-2-70 303A	1W3C(17) 1W3C	MAS SW-I-T	1W2C SF-1-T	Cochran Ave	
B	1(10)	1W3C 1W3C	1V-I-T SW-I-T	1W2C SF-1-T		
C	17-2-70 303A/B/A	1W3C(17) 1W3C	MAS SW-I-T	1W2C SF-1-T	La Sierra Ave	
D	1(10)	1W3C 1W3C	1V-I-T SW-I-T	1W2C SF-1-T		
E	19-2-70 303A/B/A	1W3C(17) 1W3C	MAS SW-I-T	1W2C SF-1-T	Cochran Ave	
F	1(10)	1W3C 1W3C	1V-I-T SW-I-T	1W2C SF-1-T		
G	17-2-70 303A/B/A	1W3C(17) 1W3C	MAS SW-I-T	1W2C SF-1-T	La Sierra Ave	
H	1(10)	1W3C 1W3C	1V-I-T SW-I-T	1W2C SF-1-T		

NOTE: ALL TYPE I STANDARDS SHALL BE ALUMINUM
ALL LUMINAIRES SHALL BE HIGH PRESSURE SODIUM VAPOR

CITY OF RIVERSIDE
PUBLIC WORKS DEPARTMENT

APPROVED BY: *[Signature]*
PRINCIPAL ENGINEER
TRAFFIC DIVISION
DATE: April 17, 1981

La Sierra Avenue
at
Cochran Avenue

SHEET 457 OF 457

HORIZ. SCALE: 1" = 100'
VERT. SCALE: 1" = 10'

ACCOUNT NO. 20-526-381-02

FILE NO.