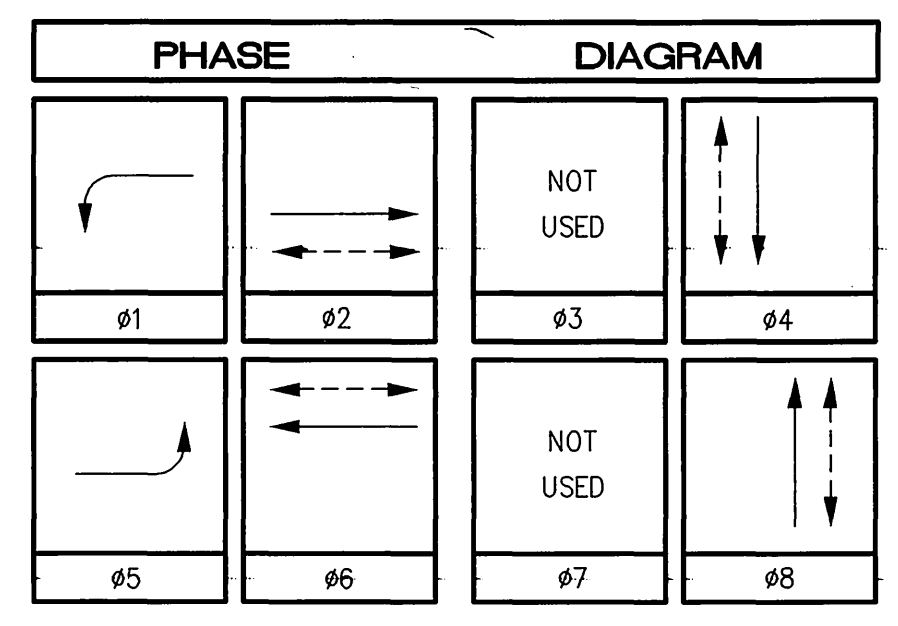


CONDUCTOR		TABLE									
AWG	CIRCUIT	RUNS									
		1	2	3	4	5	6	7	8	9	10
#14	#1	3	-	-	-	-	3	3	3	3	-
	#2	-	-	-	-	-	3	3	3	-	
	#4	-	-	3	3	3	3	3	-	-	
	#5	-	-	-	-	3	3	3	-	-	
	#6	3	-	-	-	-	3	3	3	3	
	#8	-	-	-	-	3	3	3	3	3	
	#2 PED	-	-	1	1	1	1	1	1	-	
	#4 PED	-	-	2	2	2	2	2	-	-	
	#6 PED	2	-	-	-	2	2	2	2	-	
	#8 PED	2	2	-	-	4	4	4	4	2	
	#2 PPB	-	-	-	-	2	2	2	2	-	
	#4 PPB	-	-	-	-	1	1	1	1	-	
	#6 PPB	-	-	-	-	1	1	1	1	1	
	#8 PPB	-	1	1	1	1	1	1	1	1	
	PPB COMMON	1	1	1	1	1	1	1	1	1	
	SPARES	3	3	3	3	3	6	6	3	3	
	TOTAL	14	7	9	11	17	39	42	42	23	10
TYPE B DLC	#1 DETECTOR	-	-	-	-	1	1	1	1	-	
	#2 DETECTOR	-	-	-	-	3	3	3	-	-	
	#4 DETECTOR	-	-	-	-	-	1	1	-	-	
	#5 DETECTOR	-	-	-	-	1	1	1	-	-	
	#6 DETECTOR	-	-	-	-	3	3	3	3	-	
	#8 DETECTOR	-	-	1	1	1	1	1	1	-	
		TOTAL	-	-	1	1	9	9	10	10	4
		TOTAL	-	-	1	1	9	9	10	10	4
#10	LUMINAIRE	2	-	-	2	2	2	2	-	2	
	SIGNAL COMMON	1	1	1	1	1	1	1	2	1	
	TOTAL	3	1	1	3	3	3	3	2	3	
#12	IISNS	2	-	-	2	2	2	-	2	2	
#8	SIGNAL SERVICE	-	-	-	-	-	-	-	2	-	
#20/4	EVPE	-	1	1	1	1	2	2	2	-	
CONDUIT SIZE		2"	1.5"	3"(N)	3"(N)	3"(N)	3.5"	2-3"(N)	2-3"(N)	3"	2"

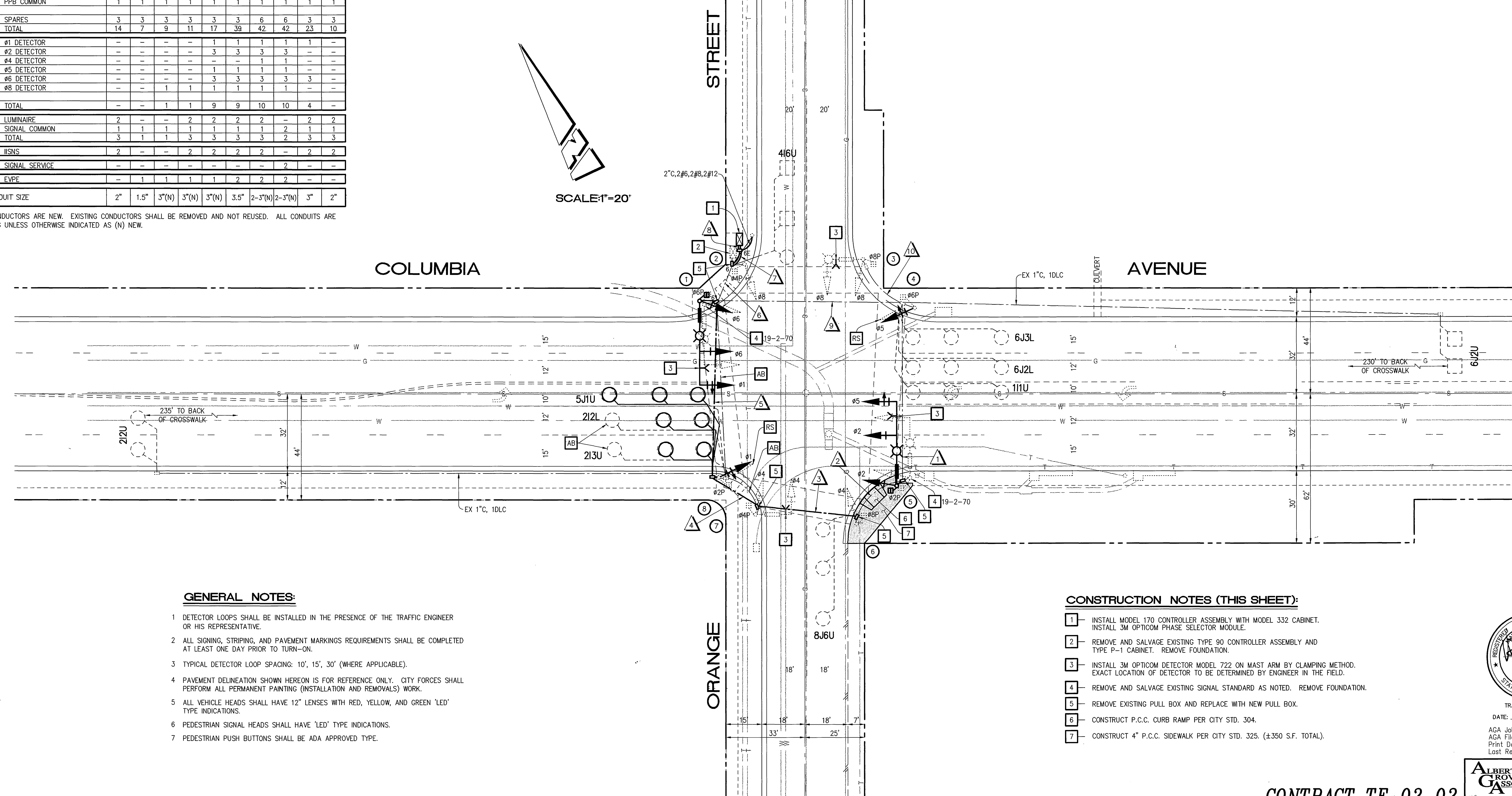


POLE		SCHEDULE										
No.	TYPE	STANDARD				LUMINAIRE HPS	IISNS LEGEND	SIGNAL MOUNTING			PPB PHASE	REMARKS
		HGT.	SIG. M.A.	LUM. M.A.	M.A.			VEHICLE	PED	AUDIBLE		
1	24-4-80(N)	30'	35'(N)	12'(N)	250W(R)	Orange St 1100 (R)	MAS(N)	MAS(R)	SV-1-T(N)	SP-1-T(R)	((P)) (N)	#4(N)
2	1-A	10'	-	-	-	-	-	-	TV-1-T	SP-1-T	((C)) (N)	#6
3	17-2-70	30'	15'	12'	250W	Columbia Ave 3400	MAS	MAS(R)	SV-1-T	SP-1-T	((C)) (N)	#6
4	1-A	10'	-	-	-	-	-	-	TV-1-T(N)	SP-1-T	((P)) (N)	#8
5	24-4-80(N)	30'	35'(N)	12'(N)	250W(R)	Orange St 1200 (R)	MAS(N)	MAS(R)	SV-1-T(N)	SP-1-T(R)	((P)) (N)	#8(N)
6	1-A	10'	-	-	-	-	-	-	TV-1-T	SP-1-T	((C)) (N)	#2
7	16-2-70	17'	15'	-	-	Columbia Ave 3500	MAS	MAS(R)	SV-1-T	SP-1-T	((C)) (N)	#2
8	1-A	10'	-	-	-	-	-	-	TV-1-T(N)	SP-1-T	((P)) (N)	#4

ALL EQUIPMENT IS EXISTING UNLESS OTHERWISE INDICATED AS (N) NEW, (R) RELOCATE.  
 ((C)) OR ((P)) - INDICATES AUDITORY PEDESTRIAN SIGNAL TO BE INSTALLED; ((C)) INDICATES CUCKOO SOUND; ((P)) INDICATES PEEP-PEEP SOUND.

ALL CONDUCTORS ARE NEW. EXISTING CONDUCTORS SHALL BE REMOVED AND NOT REUSED. ALL CONDUITS ARE EXISTING UNLESS OTHERWISE INDICATED AS (N) NEW.

SCALE: 1"=20'



**GENERAL NOTES:**

- DETECTOR LOOPS SHALL BE INSTALLED IN THE PRESENCE OF THE TRAFFIC ENGINEER OR HIS REPRESENTATIVE.
- ALL SIGNING, STRIPING, AND PAVEMENT MARKINGS REQUIREMENTS SHALL BE COMPLETED AT LEAST ONE DAY PRIOR TO TURN-ON.
- TYPICAL DETECTOR LOOP SPACING: 10', 15', 30' (WHERE APPLICABLE).
- PAVEMENT DELINEATION SHOWN HEREON IS FOR REFERENCE ONLY. CITY FORCES SHALL PERFORM ALL PERMANENT PAINTING (INSTALLATION AND REMOVALS) WORK.
- ALL VEHICLE HEADS SHALL HAVE 12" LENSES WITH RED, YELLOW, AND GREEN 'LED' TYPE INDICATIONS.
- PEDESTRIAN SIGNAL HEADS SHALL HAVE 'LED' TYPE INDICATIONS.
- PEDESTRIAN PUSH BUTTONS SHALL BE ADA APPROVED TYPE.

**CONSTRUCTION NOTES (THIS SHEET):**

- INSTALL MODEL 170 CONTROLLER ASSEMBLY WITH MODEL 332 CABINET. INSTALL 3M OPTICOM PHASE SELECTOR MODULE.
- REMOVE AND SALVAGE EXISTING TYPE 90 CONTROLLER ASSEMBLY AND TYPE P-1 CABINET. REMOVE FOUNDATION.
- INSTALL 3M OPTICOM DETECTOR MODEL 722 ON MAST ARM BY CLAMPING METHOD. EXACT LOCATION OF DETECTOR TO BE DETERMINED BY ENGINEER IN THE FIELD.
- REMOVE AND SALVAGE EXISTING SIGNAL STANDARD AS NOTED. REMOVE FOUNDATION.
- REMOVE EXISTING PULL BOX AND REPLACE WITH NEW PULL BOX.
- CONSTRUCT P.C.C. CURB RAMP PER CITY STD. 304.
- CONSTRUCT 4" P.C.C. SIDEWALK PER CITY STD. 325. (±350 S.F. TOTAL).



TRAFFIC No. 1575  
 DATE: 7-11-02  
 AGA Job No. : 134-004  
 AGA File Name: COLORAMD  
 Print Date : 7/12/02  
 Last Revision : 6/27/02

**CONTRACT TE-02-02**

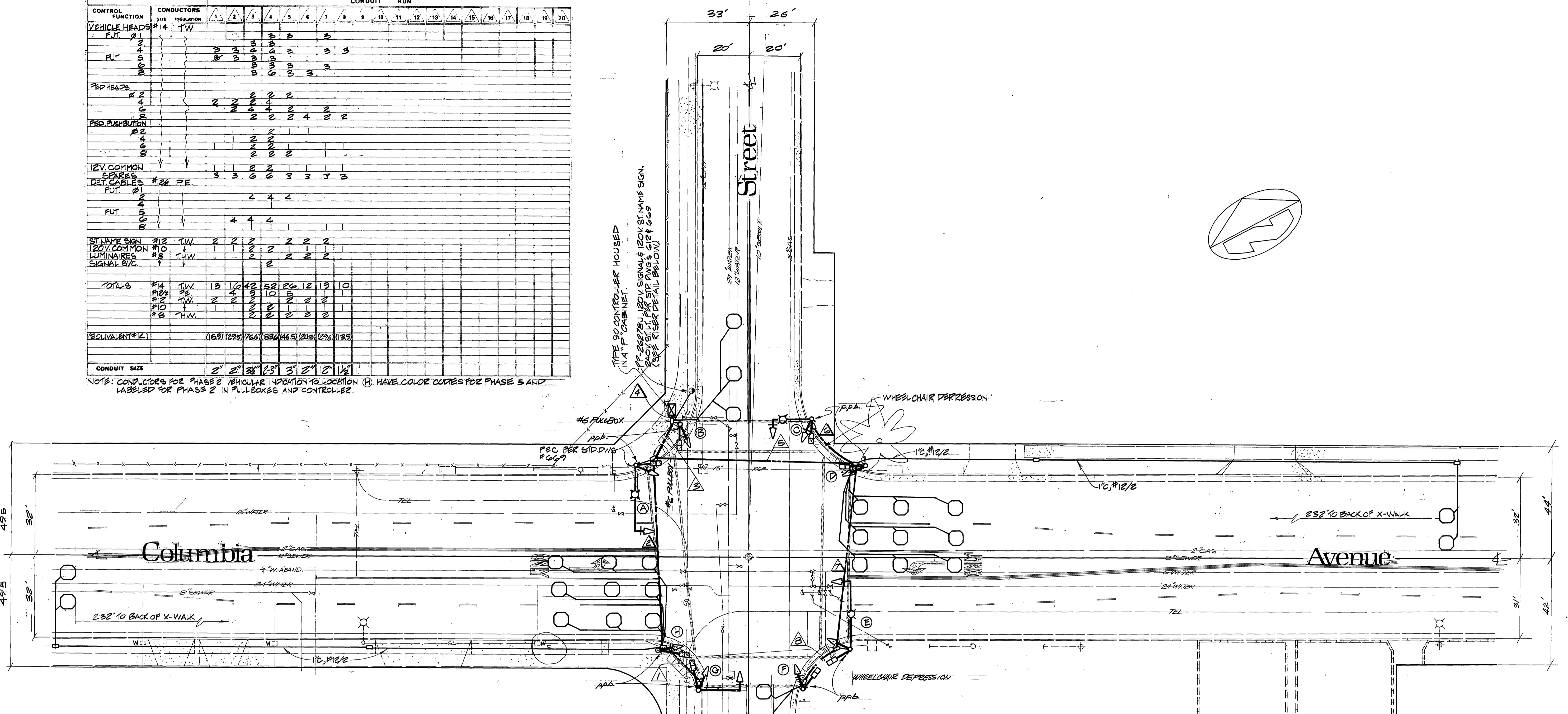


CITY OF RIVERSIDE, CALIFORNIA DEPARTMENT OF PUBLIC WORKS				TRAFFIC SIGNAL PLAN		ACCOUNT NO.
APPROVED BY		DATE	BY	APPROVED BY		X-458A SHEET 5 of 10
PRINCIPAL ENGINEER		8/12/02	DA	Name Red		
INSPECTION				PUBLIC WORKS DIRECTOR		
TRAFFIC DIVISION		8/15/02	JK			
CHIEF P. W. ENGINEER						HORIZ. SCALE: 1"= 20' VERT. SCALE: 1"= -
PUBLIC UTILITIES		8/16/02	SKS	DATE 8/21/02		
DESIGNED BY	DRAWN BY	CHECKED BY				

### CONDUCTOR SCHEDULE

CONTROL FUNCTION	CONDUCTORS	CONDUIT RUN																			
		1	2	3	4	5	6	7	8	9	10	11	12	13	14	15	16	17	18	19	20
VEHICLE HEADS #14 TW																					
FUT #1																					
PEP HEADS #10 TW																					
PEP PUSHBUTTON #10 TW																					
12V COMMON SPARES #12 PE																					
DET. CABLES #12 PE																					
ST. NAME SIGN #12 TW																					
120V COMMON #10 TW																					
LUMINAIRE #8 THW																					
SIGNAL SYS. #10 TW																					
TOTALS #14 TW		13	10	42	58	26	12	19	10												
#12 TW		2	2	10	2	2	2	2	2												
#10 TW		1	1	2	2	2	2	2	2												
#8 THW		2	2	2	2	2	2	2	2												
(EQUIVALENT #14)		(169)	(295)	(266)	(334)	(465)	(405)	(276)	(129)												
CONDUIT SIZE		2"	2"	3"	3"	3"	2"	2"	1 1/2"												

NOTE: CONDUCTORS FOR PHASE 2 VEHICULAR INDICATION TO LOCATION (H) HAVE COLOR CODES FOR PHASE 5 AND LABELED FOR PHASE 2 IN PULL-BOXES AND CONTROLLER.

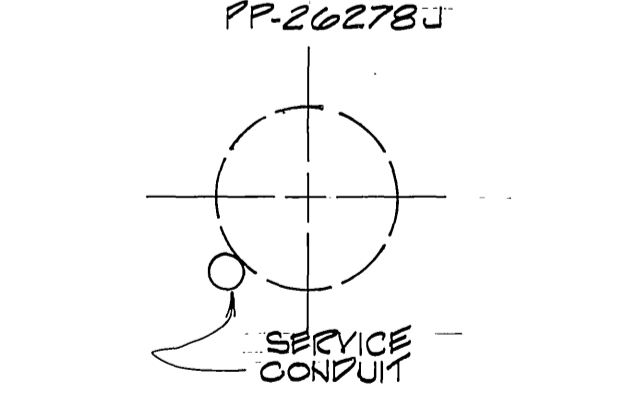


### EQUIPMENT SCHEDULE

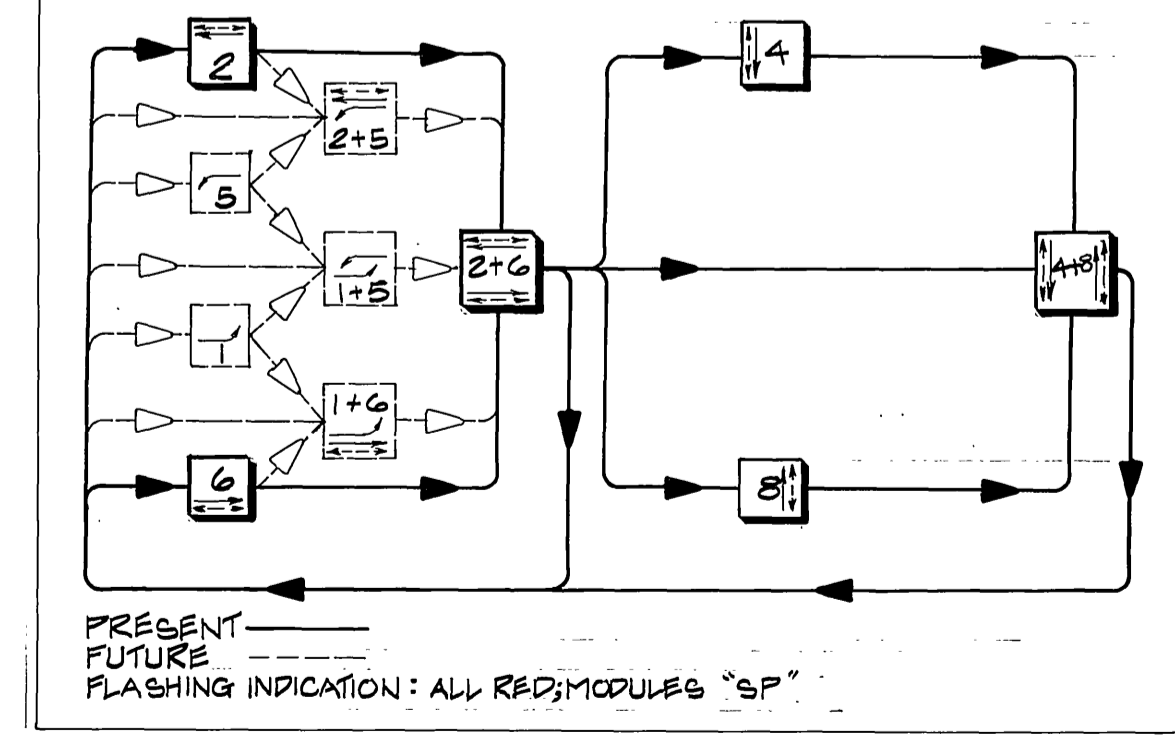
LOCATION	STANDARD	VEHICLE HEADS		PEDESTRIAN HEADS		LUMINAIRE		REMARKS
		HEAD	MOUNTING	HEAD	MOUNTING	PPB	WATTAGE	
A	19-22	1W3C(2)	MAS	1W3C	SV-I-T	1W2C	SP-I-T	250W Orange 1100'
B	1(10)	1W3C	TV-I-T	1W2C	SP-I-T			
C	17-27	1W3C(2)	MAS	1W3C	SV-I-T	1W2C	SP-I-T	250W Columbia 335'
D	1(10)	1W3C	TV-I-T	1W2C	SP-I-T			
E	19-22	1W3C(2)	MAS	1W3C	SV-I-T	1W2C	SP-I-T	250W Orange 1205'
F	1(10)	1W3C	TV-I-T	1W2C	SP-I-T			
G	16-27	1W3C(2)	MAS	1W3C	SV-I-T	1W2C	SP-I-T	Columbia 335'
H	1(10)	1W3C	TV-I-T	1W2C	SP-I-T			

ALL TYPE 1A STANDARDS ARE ALUMINUM.  
ALL LUMINAIRE'S ARE HIGH PRESSURE SODIUM VAPOR.

#### RISER DETAIL



#### PHASE DIAGRAM



<b>CITY OF RIVERSIDE</b> PUBLIC WORKS DEPARTMENT		TRAFFIC SIGNALS <b>Columbia Avenue</b> <b>Orange Street</b>	ACCOUNT NO. 15-550-913 <b>X-458</b> SHEET _____ OF _____ FILE NO. _____
APPROVED BY: <i>William D. Gardner</i> PRINCIPAL ENGINEER PARK DEPARTMENT TRAFFIC DIVISION CHIEF P. W. ENGINEER PUBLIC UTILITIES		APPROVED BY: <i>William D. Gardner</i> PUBLIC WORKS DIRECTOR DATE: 6/12/80	
DESIGNED BY: <i>ML</i> DRAWN BY: <i>ML</i> CHECKED BY: <i>SPW</i>		SCALE: 1" = 20' DATE: 6/12/80	