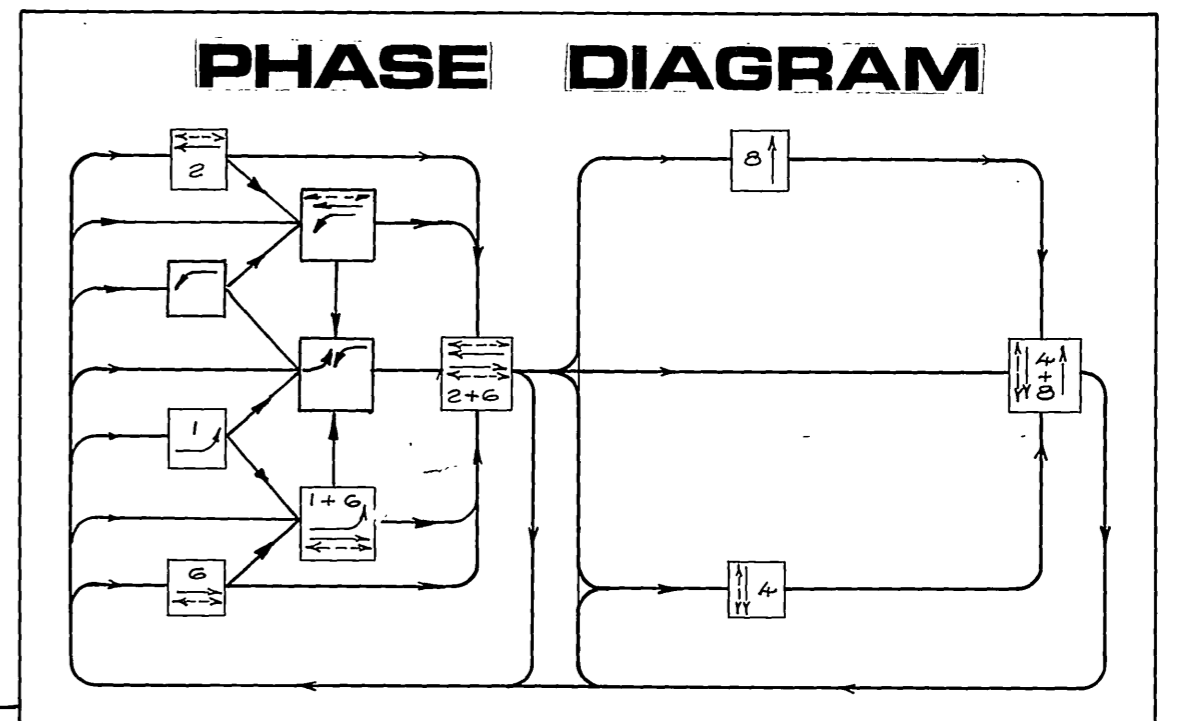


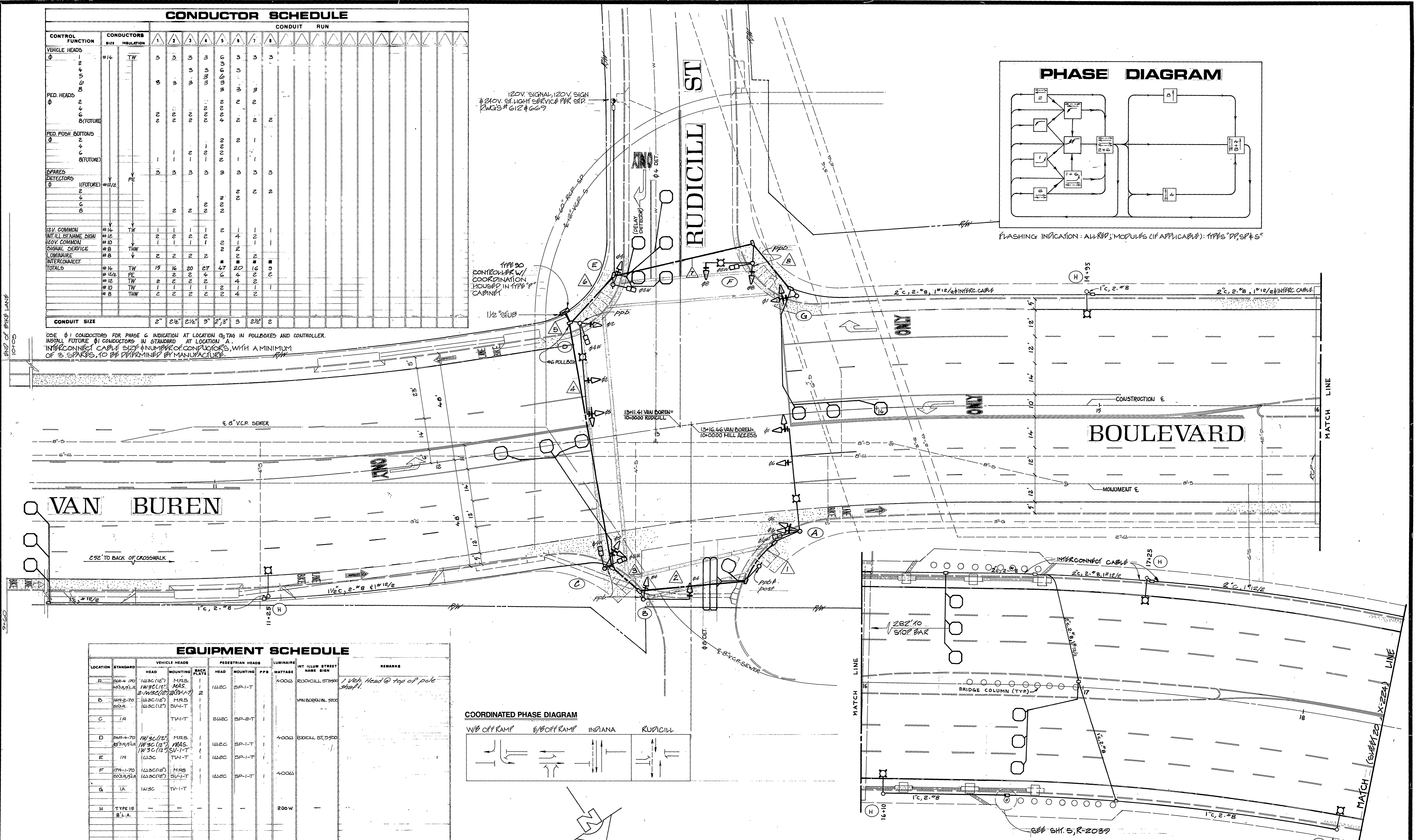
CONDUCTOR SCHEDULE

CONTROL FUNCTION	CONDUCTORS	CONDUIT RUN											
		1	2	3	4	5	6	7	8	9	10	11	12
VEHICLE HEADS	#14 TW	3	3	3	3	3	3	3	3	3	3	3	3
PED. HEADS	#8	3	3	3	3	3	3	3	3	3	3	3	3
PED. PUSH BUTTONS	#12/2	2	2	2	2	2	2	2	2	2	2	2	2
SPARES DETECTORS	#12/2	2	2	2	2	2	2	2	2	2	2	2	2
120V. COMMON	#16 TW	1	1	1	1	1	1	1	1	1	1	1	1
120V. COMMON	#10	1	1	1	1	1	1	1	1	1	1	1	1
SIGNAL SERVICE	#8 THW	2	2	2	2	2	2	2	2	2	2	2	2
LUMINAIRE	#8	2	2	2	2	2	2	2	2	2	2	2	2
INTERCONNECT	#16 TW	15	16	20	27	47	20	16	8	3	2	2	2
TOTALS	#12/2	2	2	2	2	2	2	2	2	2	2	2	2
	#12 TW	2	2	2	2	2	2	2	2	2	2	2	2
	#10 TW	1	1	1	1	1	1	1	1	1	1	1	1
	#8 THW	2	2	2	2	2	2	2	2	2	2	2	2
CONDUIT SIZE		2"	2 1/2"	2 1/2"	3"	2 1/2"	3"	2 1/2"	2"				

USE #1 CONDUCTORS FOR PHASE G INDICATION AT LOCATION G TAG IN PULLBOXES AND CONTROLLER.
 INSTALL FUTURE #1 CONDUCTORS IN STANDARD AT LOCATION A.
 INTERCONNECT CABLE SIZE & NUMBER OF CONDUCTORS, WITH A MINIMUM OF 3 SPARES, TO BE DETERMINED BY MANUFACTURER.



FLASHING INDICATION: ALL R/W; MODULES (IF APPLICABLE): TYPES "D", "S" & "S"

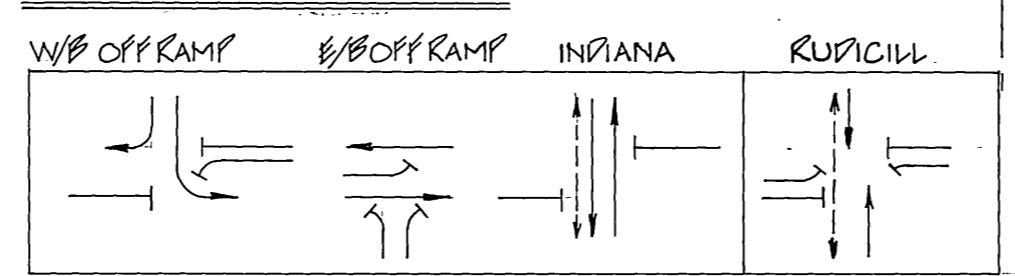


EQUIPMENT SCHEDULE

LOCATION	STANDARD	VEHICLE HEADS			PEDESTRIAN HEADS			LUMINAIRE	INT. ILLUM. STREET NAME SIGN	REMARKS
		HEAD	MOUNTING	BACK PLATE	HEAD	MOUNTING	PPS			
A	24R-70 25S/25LA	1W3C(12")	MRS.	1	1A2C	SP-1-T	400W	RUDICILL ST. 2000	1 Veh. Head @ top of pole shaft.	
B	16A-2-70 203A	1W3C(12")	MRS.	1	1A2C	SP-1-T	400W	VAN BUREN BL. 2200		
C	1A	1W3C(12")	MRS.	1	1A2C	SP-1-T	400W	RUDICILL ST. 2000		
D	24R-70 25S/25LA	1W3C(12")	MRS.	1	1A2C	SP-1-T	400W	RUDICILL ST. 2000		
E	1A	1W3C(12")	MRS.	1	1A2C	SP-1-T	400W	RUDICILL ST. 2000		
F	17A-1-70 203A/25LA	1W3C(12")	MRS.	1	1A2C	SP-1-T	400W	RUDICILL ST. 2000		
G	1A	1W3C(12")	MRS.	1	1A2C	SP-1-T	400W	RUDICILL ST. 2000		
H	TYPE 15 8' L.A.						200W			

NOTE: TYPE 1A STANDARDS ARE ALUMINUM.
 LUMINAIRE ARE HIGH PRESSURE SODIUM.
 ALL PPS INDICATION ARE ALL 12" ARROWS.

COORDINATED PHASE DIAGRAM



CITY OF RIVERSIDE PUBLIC WORKS DEPARTMENT		Van Buren Underpass & Rudicill Street TRAFFIC SIGNALS		ACCOUNT NO. 30-575-224-07 X-461
APPROVED PRINCIPAL ENGINEER DATE 11/18/80	BY DATE 11/18/80	APPROVED BY PUBLIC WORKS DIRECTOR DATE 11/18/80	DATE 11/18/80	SHEET OF
DESIGNED BY DRAWN BY CHECKED BY	REVISIONS APPR. DATE	TRAFFIC DIVISION CHIEF P.W. ENGINEER P.W. ELECTRIC	HORIZ. SCALE: 1" = 20' VERT. SCALE: 1" =	INDEXED R/E