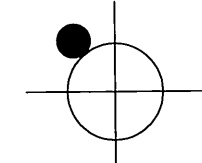


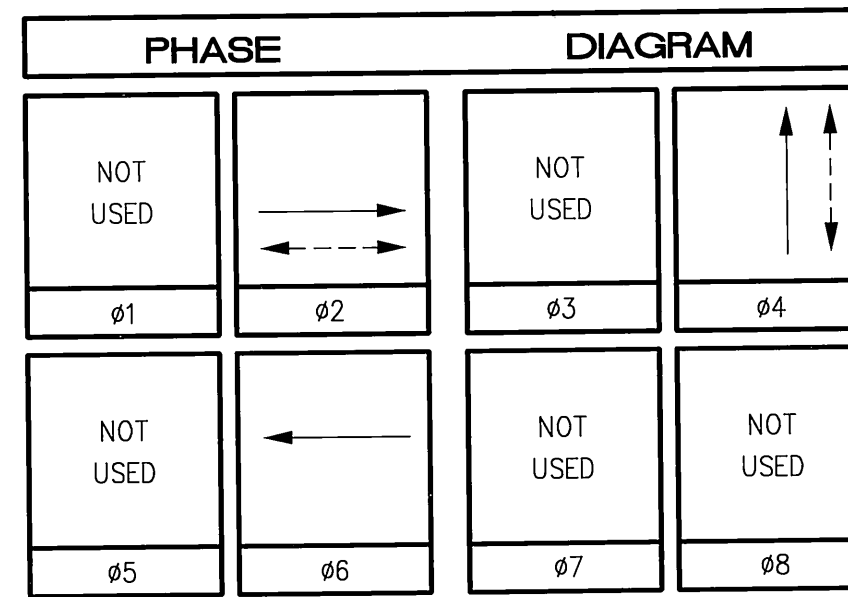
CONDUCTOR		TABLE						
CONTROL FUNCTION	CONDUCTORS	CONDUCTOR RUNS						
		1	2	3	4	5	6	7
VEHICLE & PEDESTRIAN HEADS, PEDESTRIAN PUSH BUTTONS, SPARES & COMMONS	12 CONDUCTOR IMSA 9 CONDUCTOR IMSA 5 CONDUCTOR IMSA 3 CONDUCTOR IMSA	1	2	2	3	-	-	-
DETECTOR CABLE	#16/2	-	-	-	2	2	2	2
PHASE 2		-	-	-	1	1	-	-
PHASE 4		-	-	2	2	-	-	-
PHASE 6		-	-	2	2	-	-	-
TOTALS		-	-	2	5	3	2	2
USNS	#12	-	-	-	2	2	2	2
LUMINAIRES	#8	-	-	-	-	-	-	-
EVPE CABLE	#20/4	-	-	-	2	-	-	-
SIGNAL SERVICE	#6	-	-	-	2	2	2	2
CONDUIT SIZE		2"	2"	3"	2-3"	3"	3"	2"

PP# 6155J



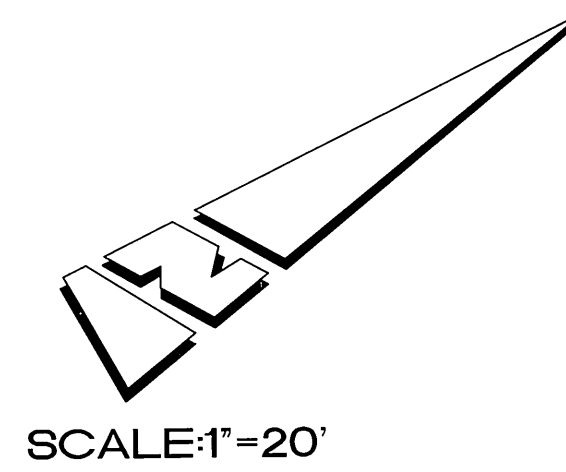
RISER DETAIL

INSTALL 120V SIGNAL, 120V SIGN AND 240V STREET LIGHT SERVICE PER STANDARD DWG. NO. 612. REMOVE EXISTING 120V FLASHING BEACON SERVICE.

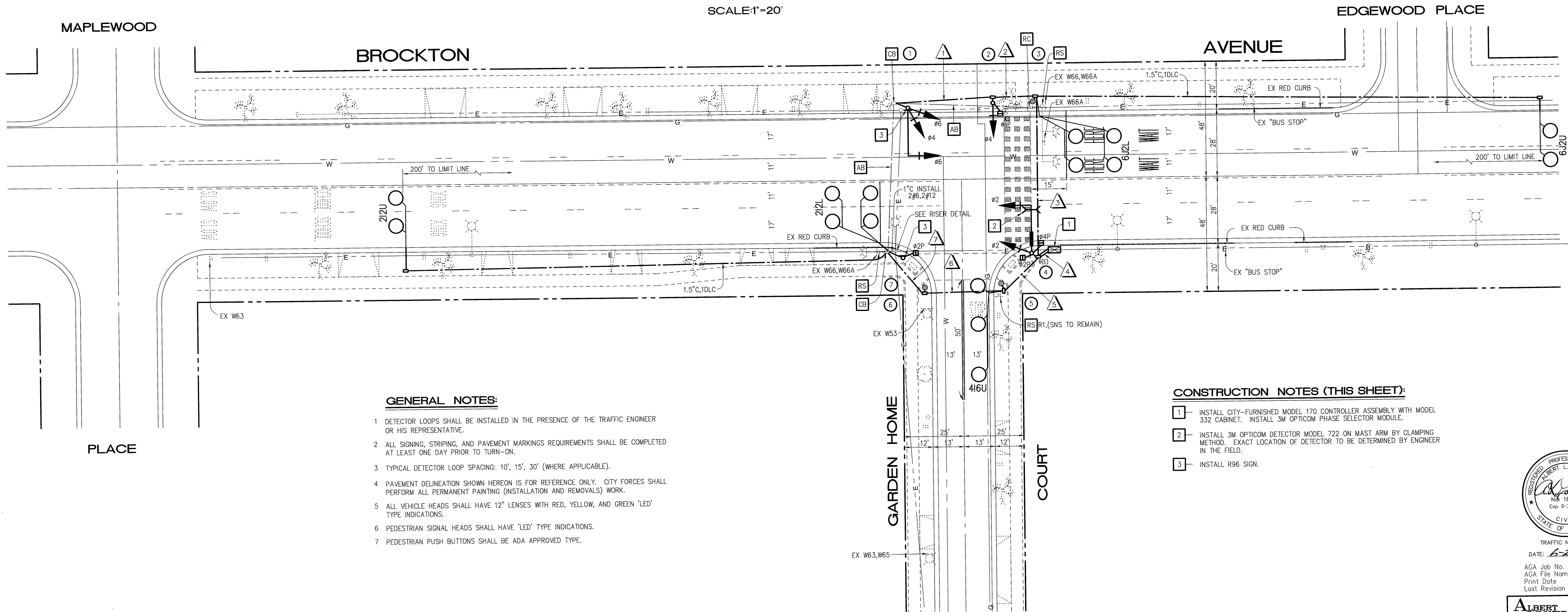


POLE		SCHEDULE									
No.	TYPE	HGT.	SIG. M.A.	LUM. M.A.	LUMINAIRE HPS	USNS LEGEND	SIGNAL MOUNTING			PPB PHASE	REMARKS
							VEHICLE	PED	AUDIBLE		
1	16-2-80	17'	20'	-	-	-	MAS	SV-2-TB	-	-	-
2	1-A	10'	-	-	-	-	-	TV-1-T	SP-1-T	((C))	-
3	PPB POST	3'10"	-	-	-	-	-	-	-	-	#4
4	16-2-80	17'	20'	-	-	Garden Home Cl 4000	MAS	SV-1-T	SP-2-T	((C))/((P))	#4
5	PPB POST	3'10"	-	-	-	-	-	-	-	-	#2
6	PPB POST	3'10"	-	-	-	-	-	-	-	-	#2
7	1-A	7'	-	-	-	-	-	-	TP-1-T	((P))	-

NOTE: ALL POLES AND MAST ARMS WILL BE CITY-FURNISHED.
 ((C)) OR ((P)) - INDICATES AUDITORY PEDESTRIAN SIGNAL TO BE INSTALLED:
 ((C)) INDICATES CUCKOO SOUND; ((P)) INDICATES PEEP-PEEP SOUND.



SCALE: 1"=20'



GENERAL NOTES:

- DETECTOR LOOPS SHALL BE INSTALLED IN THE PRESENCE OF THE TRAFFIC ENGINEER OR HIS REPRESENTATIVE.
- ALL SIGNING, STRIPING, AND PAVEMENT MARKINGS REQUIREMENTS SHALL BE COMPLETED AT LEAST ONE DAY PRIOR TO TURN-ON.
- TYPICAL DETECTOR LOOP SPACING: 10', 15', 30' (WHERE APPLICABLE).
- PAVEMENT DELINEATION SHOWN HEREON IS FOR REFERENCE ONLY. CITY FORCES SHALL PERFORM ALL PERMANENT PAINTING (INSTALLATION AND REMOVALS) WORK.
- ALL VEHICLE HEADS SHALL HAVE 12" LENSES WITH RED, YELLOW, AND GREEN 'LED' TYPE INDICATIONS.
- PEDESTRIAN SIGNAL HEADS SHALL HAVE 'LED' TYPE INDICATIONS.
- PEDESTRIAN PUSH BUTTONS SHALL BE ADA APPROVED TYPE.

CONSTRUCTION NOTES (THIS SHEET):

- INSTALL CITY-FURNISHED MODEL 170 CONTROLLER ASSEMBLY WITH MODEL 332 CABINET. INSTALL 3M OPTICOM PHASE SELECTOR MODULE.
- INSTALL 3M OPTICOM DETECTOR MODEL 722 ON MAST ARM BY CLAMPING METHOD. EXACT LOCATION OF DETECTOR TO BE DETERMINED BY ENGINEER IN THE FIELD.
- INSTALL R96 SIGN.

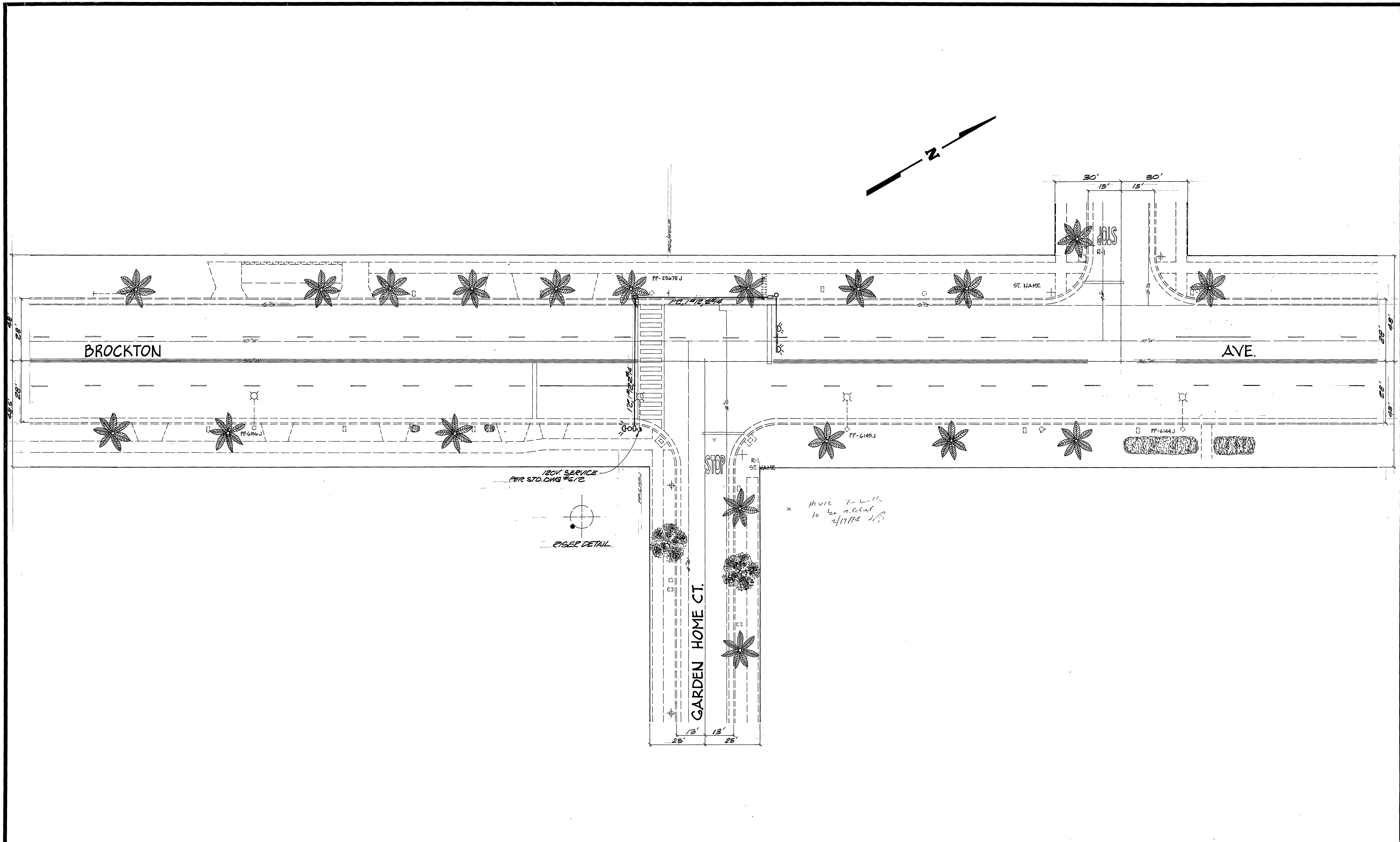


TRAFFIC No. 0860
DATE: 6-27-01

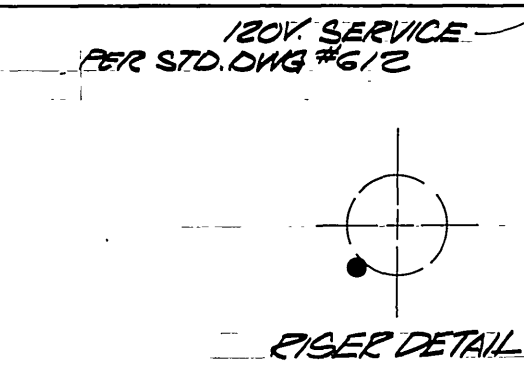
AGA Job No. : 134-003
AGA File Name: BROGARS
Print Date : 6/21/01
Last Revision : 6/21/01



CITY OF RIVERSIDE, CALIFORNIA DEPARTMENT OF PUBLIC WORKS				TRAFFIC SIGNAL PLAN		ACCOUNT NO.
APPROVED BY	DATE	BY	APPROVED BY	BROCKTON AVENUE AT GARDEN HOME COURT		
PRINCIPAL ENGINEER	8/14/01	R. Mc Bratz	PUBLIC WORKS DIRECTOR	X-473		
INSPECTION	8/13/01	CB		SHEET ___ OF ___		
TRAFFIC DIVISION	8/13/01	CB		HORIZ. SCALE: 1"= 20' VERT. SCALE: 1"= -		
CHIEF P. W. ENGINEER	8/13/01	CB	DATE: 8-20-2001			
PUBLIC UTILITIES	8/13/01	CB				
DESIGNED BY	DRAWN BY	CHECKED BY				

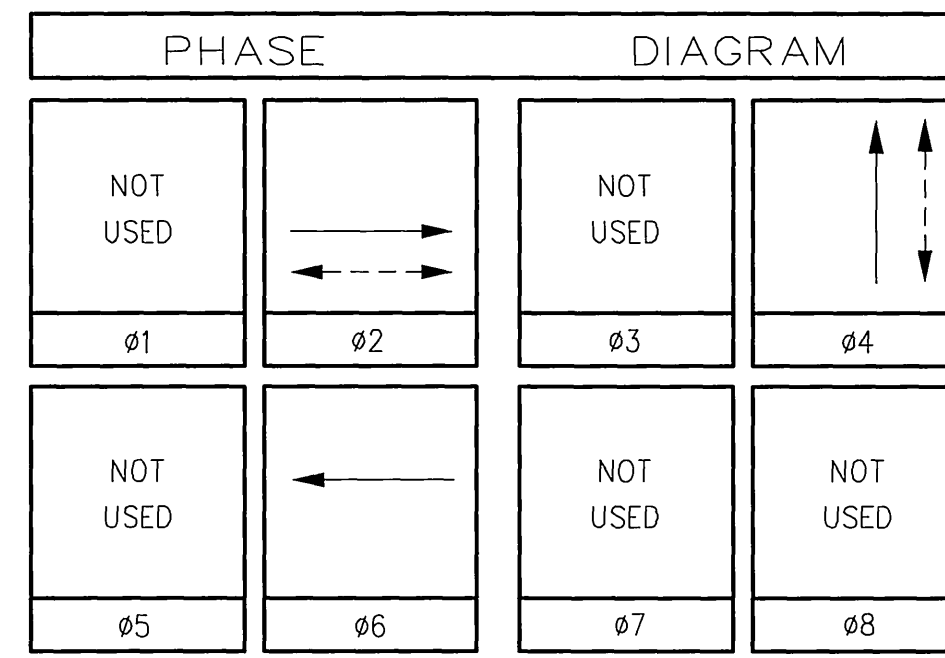
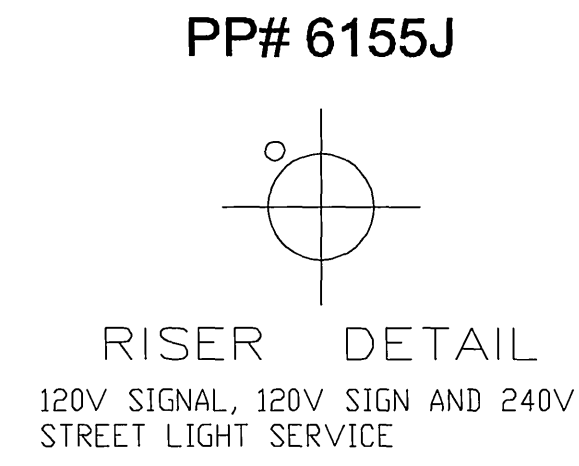


* Have 7-1/2" to be added
2/17/81 J/S



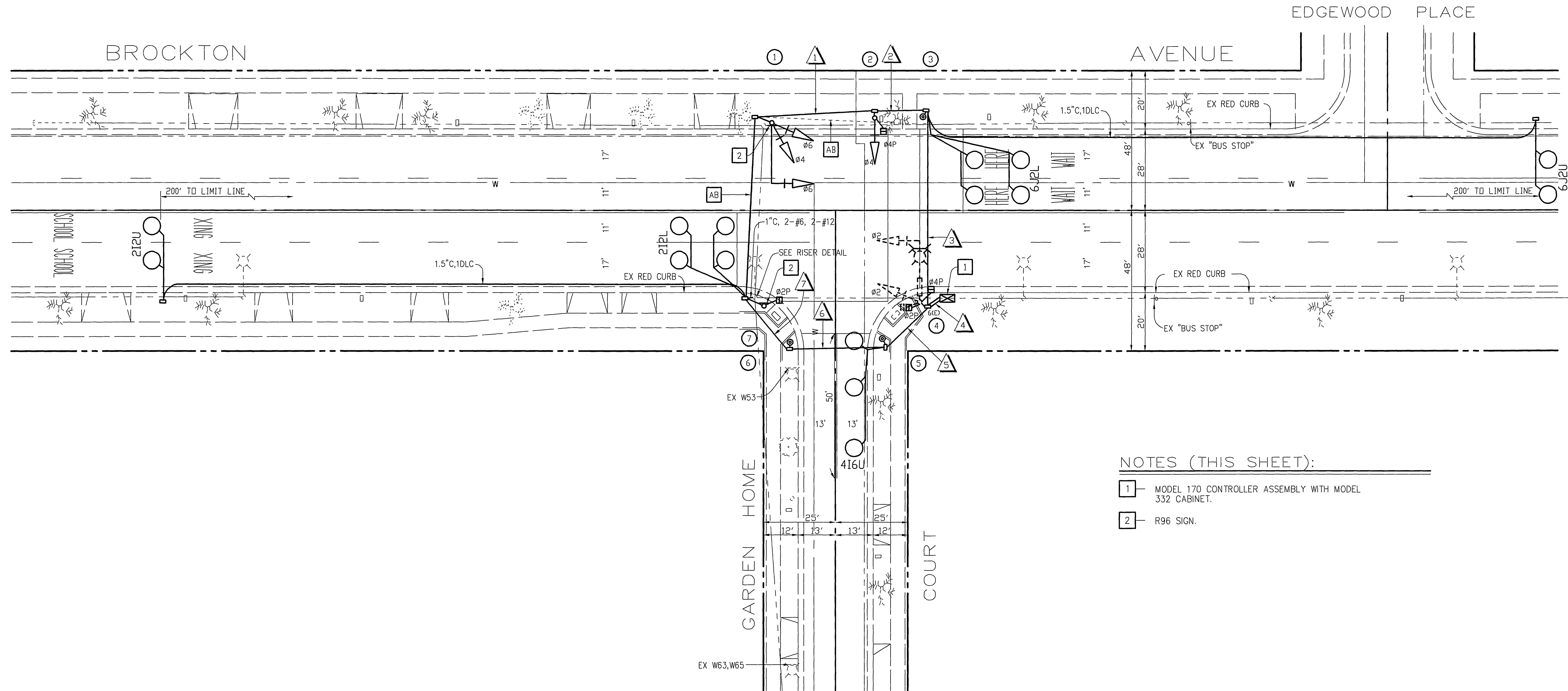
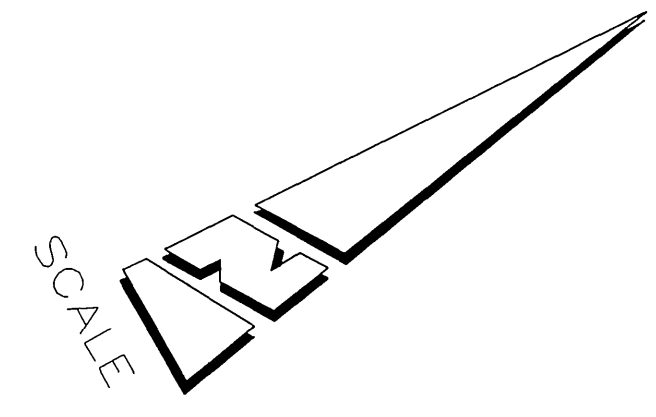
CITY OF RIVERSIDE PUBLIC WORKS DEPARTMENT				FLASHING BEACON		ACCOUNT NO. 30-576-390-09
				BROCKTON AVENUE AT GARDEN HOME COURT		X-473
APPROVED	BY	DATE	APPROVED BY	PUBLIC WORKS DIRECTOR		
PRINCIPAL ENGINEER	<i>[Signature]</i>	8/21/81	<i>[Signature]</i>			
PARK DEPARTMENT						
TRAFFIC DIVISION	J	8/21/81				
CHIEF P. W. ENGINEER	<i>[Signature]</i>	8-21-81				
DESIGNED BY	BCA	CHECKED BY	J/S	DATE	8/21/81	
MARK	REVISIONS	APPR.	DATE	HORIZ. SCALE: 1" = 20' VERT. SCALE: 1" =		

CONDUCTOR		TABLE						
CONTROL FUNCTION	CONDUCTORS	CONDUCTOR			RUNS			
		1	2	3	4	5	6	7
VEHICLE & PEDESTRIAN HEADS, PEDESTRIAN PUSH BUTTONS, SPARES & COMMONS	12 CONDUCTOR IMSA	1	2	2	3	-	-	-
	9 CONDUCTOR IMSA	-	-	-	-	-	-	-
	5 CONDUCTOR IMSA	-	-	-	-	-	-	-
	3 CONDUCTOR IMSA	-	-	1	4	2	1	-
DETECTOR CABLE	#16/2	-	-	-	2	2	2	2
PHASE 2		-	-	-	1	1	-	-
PHASE 4		-	-	-	2	2	-	-
PHASE 6		-	-	-	2	5	3	2
TOTALS		-	-	-	2	5	3	2
IISNS	#12	-	-	-	-	2	2	2
LUMINAIRES	#8	-	-	-	-	-	-	-
EVPE CABLE	#20/4	-	-	-	2	-	-	-
SIGNAL SERVICE	#6	-	-	-	2	2	2	2
CONDUIT SIZE		2"	2"	3"	2-3"	3"	3"	2"



POLE		SCHEDULE									
No.	TYPE	STANDARD		LUMINAIRE HPS	IISNS LEGEND	SIGNAL MOUNTING			PPB PHASE	REMARKS	
		HGT.	SIG. M.A.			VEHICLE	PED	AUDIBLE			
1	16-2-B0	17'	20'	-	-	-	MAS	SV-2-TB	-	-	-
2	1-A	10'	-	-	-	-	-	TV-1-T	SP-1-T	<<C>>	-
3	PPB POST	3'10"	-	-	-	-	-	-	-	-	ø4
4	16-2-B0	17'	20'	-	Garden Home Ct 4000	-	MAS	SV-1-T	SP-2-T	<<C>>/<<P>>	ø4
5	PPB POST	3'10"	-	-	-	-	-	-	-	-	ø2
6	PPB POST	3'10"	-	-	-	-	-	-	-	-	ø2
7	1-A	7'	-	-	-	-	-	-	TP-1-T	<<P>>	-

<<C>> OR <<P>> - INDICATES AUDITORY PEDESTRIAN SIGNAL TO BE INSTALLED;
<<C>> INDICATES CUCKOO SOUND; <<P>> INDICATES PEEP-PEEP SOUND.



- NOTES (THIS SHEET):**
- 1 - MODEL 170 CONTROLLER ASSEMBLY WITH MODEL 332 CABINET.
 - 2 - R96 SIGN.

CITY OF RIVERSIDE, CALIFORNIA DEPARTMENT OF PUBLIC WORKS		TRAFFIC SIGNAL		ACCT. NO.
APPROVED BY	By	DATE	BROCKTON AVENUE AT GARDEN HOME COURT	
AS-BUILT PER TE-01-02	MAC	11/02	X-473	
MARK	REVISIONS	APPR.	DATE	SHEET 1 OF 1
DESIGNED BY AGA	DRAWN BY AGA	CHECKED BY	DATE	FILE NAME: X473AS.DWG