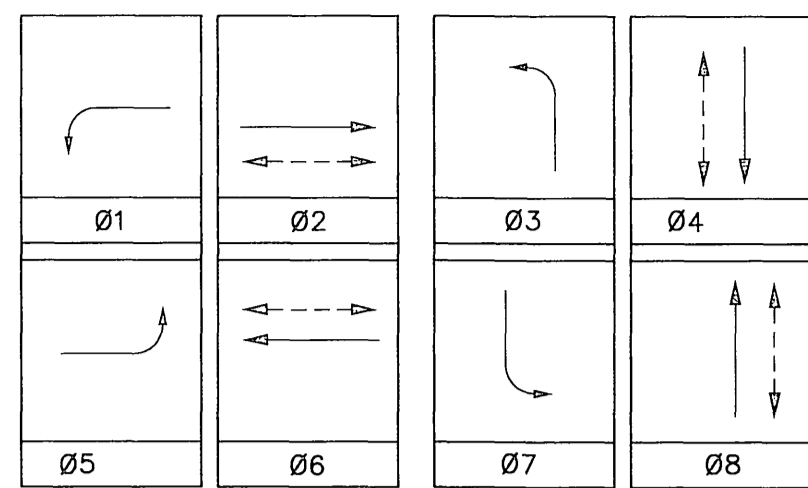


**CONDUCTOR TABLE**

CONTROL FUNCTION	CONDUCTORS	CONDUCTOR RUNS							
		1	2	3	4	5	6	7	8
VEHICLE & PEDESTRIAN HEADS, PEDESTRIAN PUSH BUTTONS, SPARES & COMMONS	12 WIRE IMSA	1	2	3	4	8	3	2	1
	9 WIRE IMSA	1	1	1	1	1			
	5 WIRE IMSA	1	2	3	4	8	3	2	1
	3 WIRE IMSA	1	2	3	4	8	3	2	1
DETECTOR CABLE	#16/2	2	2	2	2	2			
PHASE 1									
PHASE 2							2		
PHASE 3							1	1	1
PHASE 4				1	1	1			
PHASE 5							1		
PHASE 6		2	2	2	2	2			
PHASE 7				1	1	1			
PHASE 8							2	2	2
PRIORITY PRE-EMPT	4#20		1	1	2	4	2	1	1
INTERCONNECT CABLE	#19					1	1	1	
I.I.S.N.S.	#12		2	2	2		2	2	2
LUMINAIRES	#8		2	2	2		2	2	2
SERVICE	#6					2			
CONDUIT SIZE		2"	2.5"	2.5"	3"	2-3"	3"	3"	3"
	ADD			2"	2"				

**PHASE DIAGRAM**



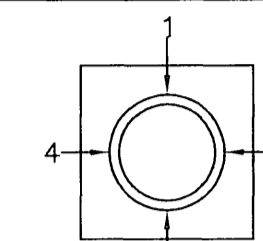
FLASHING OPERATION SHALL BE ALL RED.

**POLE SCHEDULE**

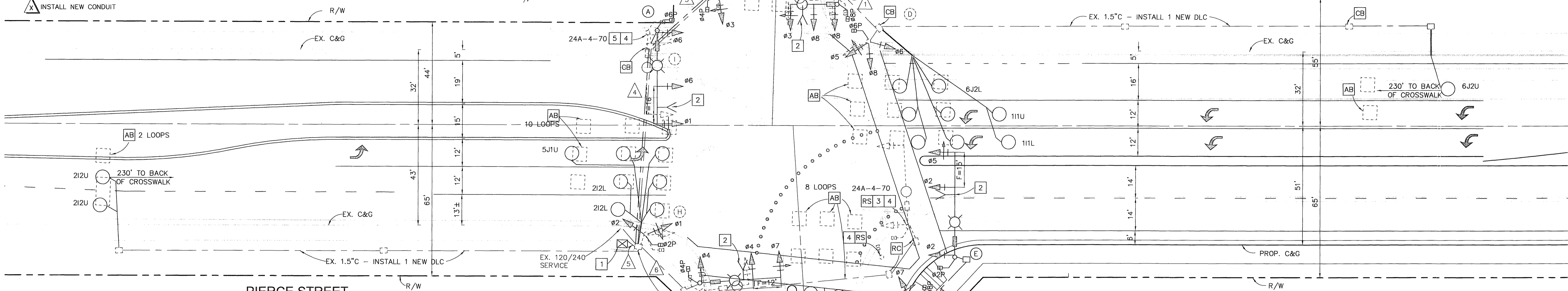
NO.	TYPE	HEIGHT	MAST ARM LENGTH		SIGNAL MOUNTING			PPB	H.P.S.V.	I.I.S.N.S.	REMARKS
			SIGNAL	LUMINAIRE	MA	POLE	PED*				
A	26A-4-80(N)	35'	40'(N)	15'(N)	MAS(N) MAS(R)	SV-1-T(N)	SP-1-T		400 W(N)	Golden Ave 4900 (R)	F=16'
B	1-A(N)	10'	-	-	-	TV-2-T(N)	SP-1-T	6 3			REMOVE AND SALVAGE EX. 1-A (7') AND PED HEAD. INSTALL NEW 1-A POLE ON EXISTING FOUNDATION.
C	17A-3-80(N)	35'	20'(N)	15'(N)	MAS(N) MAS(R)	SV-1-T(N)	SP-1-T	6 3	400 W(N)	Pierce St 11200 (N)	REMOVE AND SALVAGE EX. 17A-2-70 AND PED HEAD. INSTALL SHAFT MOUNT IISNS ON AUX ARM. F=10'
D	1-A(E)	10'	-	-	-	TV-3-T(N)	SP-1-T	8 4			REMOVE AND SALVAGE EX. 8" SIGNAL HEAD, PPB AND PED HEAD.
E	26A-4-80(N)	35'	45'(N)	15'(N)	MAS(N) MAS(R)	SV-1-T(N)	SP-1-T	8 4	400 W(N)	Riverwalk Pkwy 4800 (N)	F=15'
F	1-A(N)	10'	-	-	-	TV-2-T(N)	SP-1-T	2 1			INSTALL NEW 1-A POLE AND EQUIPMENT
G	24A-4-80(N)	35'	35'(N)	15'(N)	MAS(N) MAS(R)	SV-1-T(N)	SP-1-T	2 1	400 W(N)	Pierce St 11300 (R)	F=12'
H	1-A(E)	10'	-	-	-	TV-2-T(N)	SP-1-T	4 2			
I	PPB POST	3'-10"	-	-	-	-	-	4 2			

EXACT POLE LOCATION TO BE DETERMINED BY THE ENGINEER IN THE FIELD  
TYPE 1-A SHALL BE SPUN ALUMINUM  
NEW VEHICLE SIGNAL SHALL HAVE 12" LENS (GLASS) AND 12" RED AND GREEN LEDS PER CONTRACT SPECIAL PROVISIONS.  
ALL REUSED VEHICLE SIGNAL SHALL BE RETROFITTED WITH GREEN LED MODULES.

- NOTES:  
(N) = INSTALL NEW  
(R) = RELOCATED - INSTALL NEW MOUNTING BRACKET  
(E) = EXISTING TO REMAIN  
\*\* - INSTALL NEW ADA PED PUSH BUTTON.  
\* - INSTALL NEW AUDIBLE PED HEAD  
□ - PEEP-PEEP FOR EAST-WEST DIRECTIONS  
□ - CUCKOO FOR NORTH SOUTH DIRECTIONS



**QUADRANT**  
PEDESTRIAN/EQUESTRIAN PUSH BUTTON LOCATION  
(TOP VIEW)

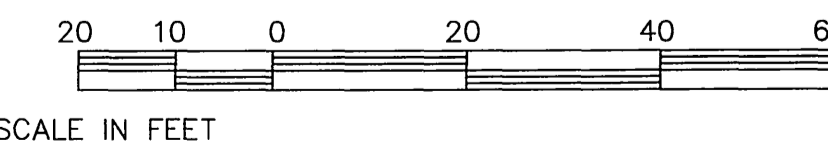


**GENERAL NOTES:**

- TRAFFIC SIGNAL WORK SHALL CONFORM TO THE PROVISIONS OF SECTION 86 OF THE MOST CURRENT STANDARD SPECIFICATIONS, THE STANDARD PLANS, BOTH PUBLISHED BY CALTRANS APPLICABLE CITY OF RIVERSIDE STANDARD DRAWINGS, AND THE CONTRACT SPECIAL PROVISIONS.
- THIS TRAFFIC SIGNAL WORK REQUIRE A "STREET OPENING PERMIT" OBTAINED AT THE PUBLIC DEPARTMENT'S COUNTER ON THE THIRD FLOOR OF CITY HALL.
- ALL EQUIPMENT AND LOOP LOCATIONS SHALL BE APPROVED BY THE TRAFFIC ENGINEER OR HIS REPRESENTATIVE PRIOR TO INSTALLATION BY CONTRACTOR.
- ALL STRIPING, PAVEMENT MARKINGS AND SIGN REQUIREMENTS (REMOVAL OR INSTALLATIONS) SHALL BE COMPLETED AT LEAST ONE DAY PRIOR TO THE SCHEDULE TURN ON.
- IT SHALL BE THE RESPONSIBILITY OF THE CONTRACTOR TO VERIFY THE EXISTENCE AND LOCATION OF ALL UNDERGROUND UTILITIES, PUBLIC OR PRIVATE, AND TO PROTECT THEM FROM DAMAGE. THE CONTRACTOR SHALL BEAR THE TOTAL EXPENSE OF REPAIR OR REPLACEMENT OF ANY UNDERGROUND FACILITY DAMAGE BY HIS OPERATIONS.
- THE PRIVATE ENGINEER SIGNING THESE PLANS IS RESPONSIBLE FOR ASSURING THE ACCURACY AND ACCEPTABILITY OF THE WORK HEREON. IN THE EVENT OF DISCREPANCIES ARISING DURING CONSTRUCTION, THE PRIVATE ENGINEER SHALL BE RESPONSIBLE FOR DETERMINING AN ACCEPTABLE SOLUTION AND REVISING THESE PLANS FOR APPROVAL OF THE CITY TRAFFIC ENGINEER.
- UNLESS SHOWN OTHERWISE, ALL INDUCTIVE LOOPS SHALL BE 6" ROUND WITH 10", 15" SPACINGS IN THE DIRECTION OF TRAVEL. NECESSARY STRIPING SHALL BE LOCATED PRIOR TO POSITIONING DETECTORS. ALL CONDUIT SIZE SHALL BE 2" MINIMUM UNLESS OTHERWISE NOTED.
- CONSTRUCTION WORK THAT WILL CAUSE DAMAGE TO THE DETECTOR LOOP(S) SHALL NOT BE PERFORMED UNTIL TRAFFIC SIGNAL MAINTENANCE PERSONNEL HAVE BEEN NOTIFIED (909-351-6909) AND THE NECESSARY TIMING ADJUSTMENTS MADE TO MAINTAIN SIGNAL OPERATION.
- ALL SALVAGE MATERIAL SHALL BE DELIVERED TO THE CITY YARD AT 8095 LINCOLN AVENUE AS DIRECTED BY THE INSPECTOR.
- EXISTING SIGNAL EQUIPMENT TO BE REUSED SHALL BE REFURBISHED AND REPAINTED PER SECTION 82-2.16 OF CALTRANS STANDARD SPECIFICATIONS.
- SPLICING OF THE CONDUCTORS IS NOT ALLOWED.
- ALL DETECTOR LOOPS SHALL BE INSTALLED IN THE PRESENCE OF THE CITY TRAFFIC ENGINEER'S INSPECTOR.
- PIPE-TENONS FOR MAST ARM MOUNTINGS SHALL BE PERPENDICULAR TO THE ARM.
- INSPECTION FEE WILL BE AT THE RATE OF \$55.00 PER HOUR.
- FOR ROADWAY CONSTRUCTION DETAILS SEE STREET IMPROVEMENT PLAN R-3516
- FOR SIGNING AND STRIPING DETAILS SEE SIGNING AND STRIPING PLAN XL-441
- CALL (909) 351-6096 AT LEAST 48 HOURS IN ADVANCE FOR INSPECTION.

**CONSTRUCTION NOTES:**

- REMOVE AND SALVAGE EXIST TYPE 170 CONTROLLER AND 332 CABINET.
- INSTALL NEW TYPE 170E CONTROLLER ASSEMBLY AND TYPE 332 CABINET PER CONTRACT SPECIAL PROVISIONS.
- INSTALL PRE-EMPTION DETECTOR PER CONTRACT SPECIAL PROVISIONS
- RELOCATE EXIST IISNS AND MAST ARM MOUNTED SIGNAL HEAD TO NEW POLE.
- EXIST POLE FOUNDATION SHALL BE REMOVED COMPLETELY.
- REMOVE AND SALVAGE EXIST POLE (AS INDICATE), 8" SIGNAL HEAD, PPB, AND PED HEAD.



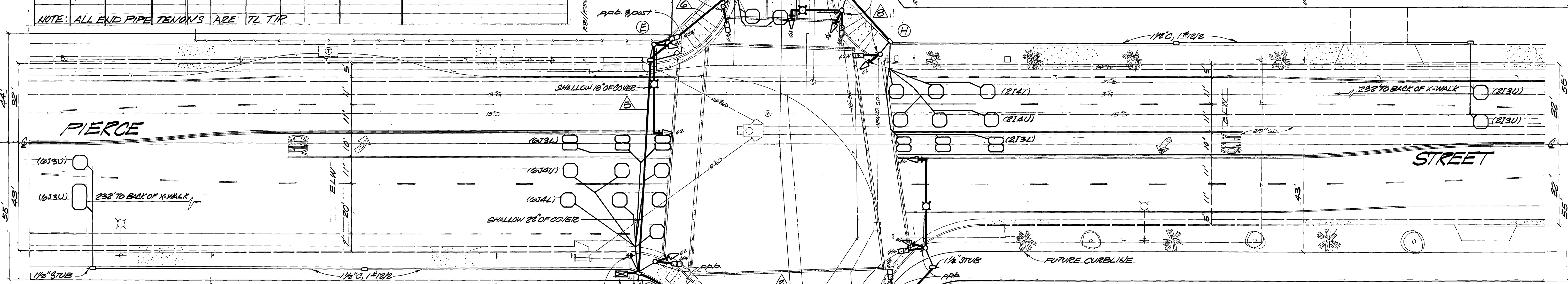
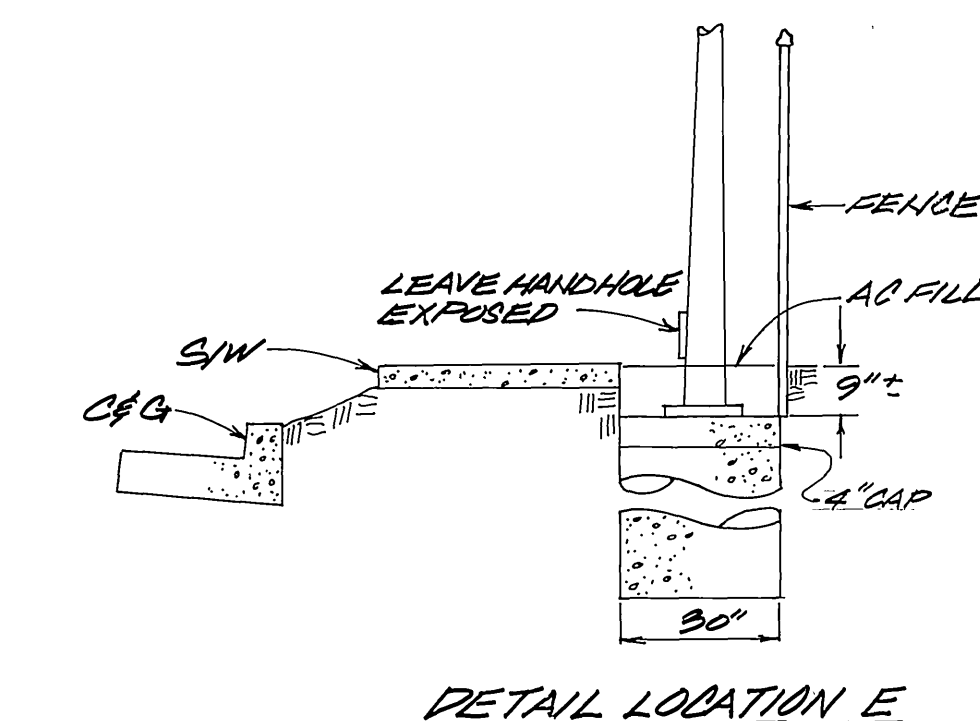
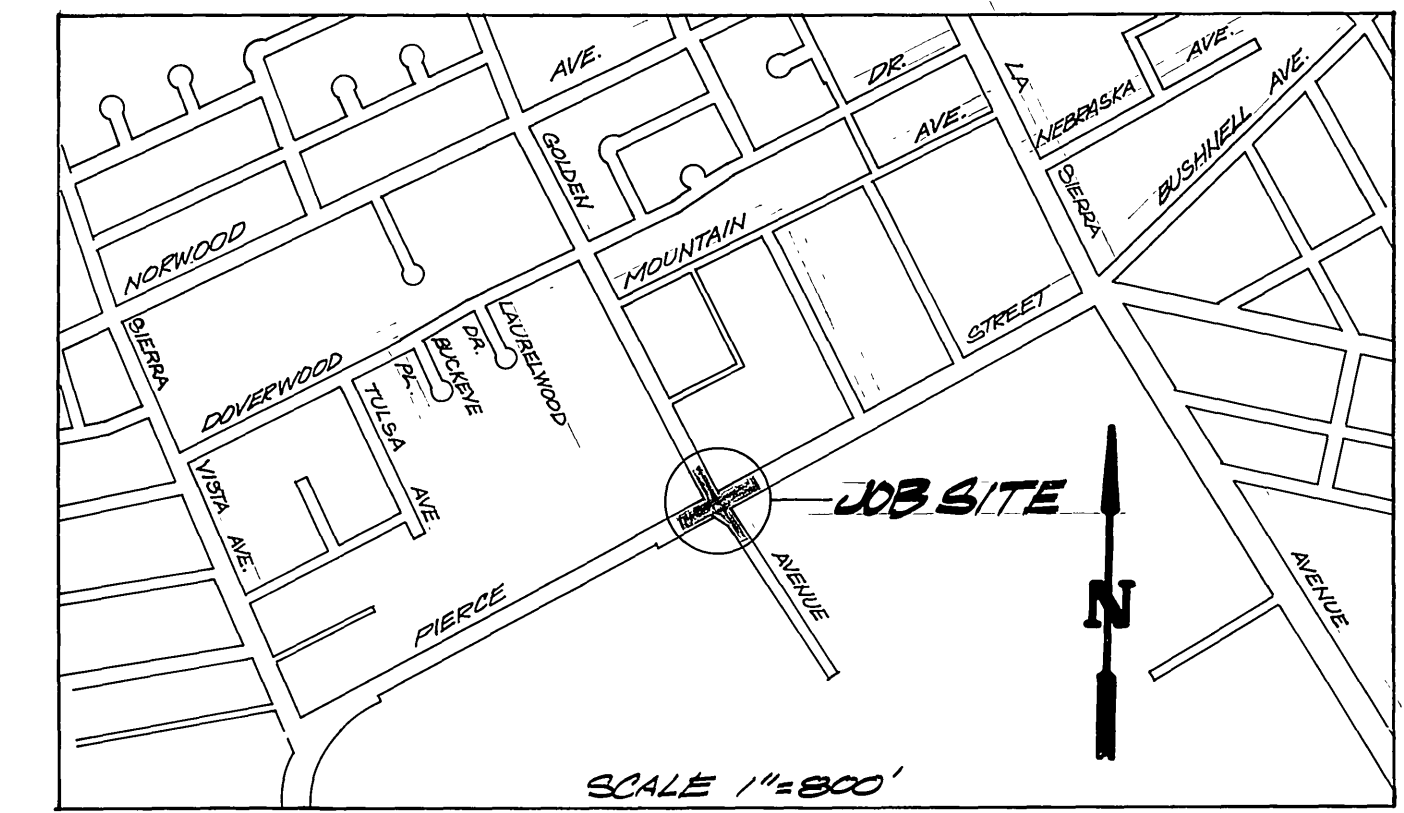
SCALE IN FEET

Underground Service Alert Call: TOLL FREE 1 - 800 227-2600 TWO WORKING DAYS BEFORE YOU DIG	PRIVATE ENGINEERING NOTE CONSTRUCTION CONTRACTOR AGREES THAT IN ACCORDANCE WITH GENERALLY ACCEPTED CONSTRUCTION PRACTICES, CONSTRUCTION CONTRACTOR WILL BE REQUIRED TO ASSUME SOLE AND COMPLETE RESPONSIBILITY FOR JOB SITE CONDITIONS DURING THE COURSE OF CONSTRUCTION OF THE PROJECT, INCLUDING SAFETY OF ALL PERSONS AND PROPERTY; THAT THIS REQUIREMENT SHALL BE MADE TO APPLY CONTINUOUSLY AND NOT BE LIMITED TO NORMAL WORKING HOURS, AND CONSTRUCTION CONTRACTOR FURTHER AGREES TO DEFEND, INDEMNIFY AND HOLD DESIGN PROFESSIONAL HARMLESS FROM ANY AND ALL LIABILITY, REAL OR ALLEGED, IN CONNECTION WITH THE PERFORMANCE OF WORK ON THIS PROJECT. CONTRACTOR'S LIABILITY ARISING FROM THE SOLE NEGLIGENCE OF DESIGN PROFESSIONAL	PREPARED UNDER THE DIRECTION OF: REGISTERED CIVIL ENGINEER No. 60896 EXPIRATION DATE: 12-31-00 DATE: 10/30/00	CIVIL ENGINEERING - PLANNING - SURVEYING 2020 IOWA AVENUE, SUITE 102, P.O. BOX 52050, RIVERSIDE, CA 92517 TEL (909) 683 - 5234 FAX (909) 683 - 5301 CITY OF RIV. BUSINESS TAX ACCT. NO. 69372 EXP. DATE 04-07-01	CITY OF RIVERSIDE, CALIFORNIA DEPARTMENT OF PUBLIC WORKS APPROVED BY: [Signature] PRINCIPAL ENGR. [Signature] TRAFFIC DIVISION [Signature] P.W. ENGR. MGR. [Signature] ST. SERVICES [Signature]	IN THE CITY OF RIVERSIDE LA SIERRA UNIVERSITY SIGNAL MODIFICATION PLAN PIERCE STREET AND GOLDEN AVE / RIVERWALK PKWY FOR: GRIFFIN INDUSTRIES	PROJECT NO. <b>X-476A</b> SHEET <b>4</b> OF <b>5</b> FILE NO.: 1104-001

# EQUIPMENT SCHEDULE

LOCATION	STANDARD	VEHICLE HEADS			PEDESTRIAN HEADS			LUMINAIRE	INT ILLUM STREET NAME SIGN	REMARKS
		HEAD	MOUNTING	BACK PLATE	HEAD	MOUNTING	PPS			
A	24A-4-70 25SA, 151A	W3C (12")	MAG	SV-1-T	W2C	SP-1-T	1	400W	Golden Ave	4800
B	1A(7)				W2C	TP-1-T	1			
C	7A-2-70 20SA, 151A	W3C (12")	MAG	SV-1-T	W2C	SP-1-T	1	250W	Pierce	1800
D	1A(10)	W3C	TV-1-T		W2C	SP-1-T	1			
E	24A-4-70 25SA, 151A	W3C (12")	MAG	SV-1-T	W2C	SP-1-T	1	400W	Golden Ave	4800
F	1A(7)				W2C	TP-1-T	1			
G	7A-2-70 20SA, 151A	W3C (12")	MAG	SV-1-T	W2C	SP-1-T	1	250W	Pierce	1800
H	1A(10)	W3C	TV-1-T		W2C	SP-1-T	1			

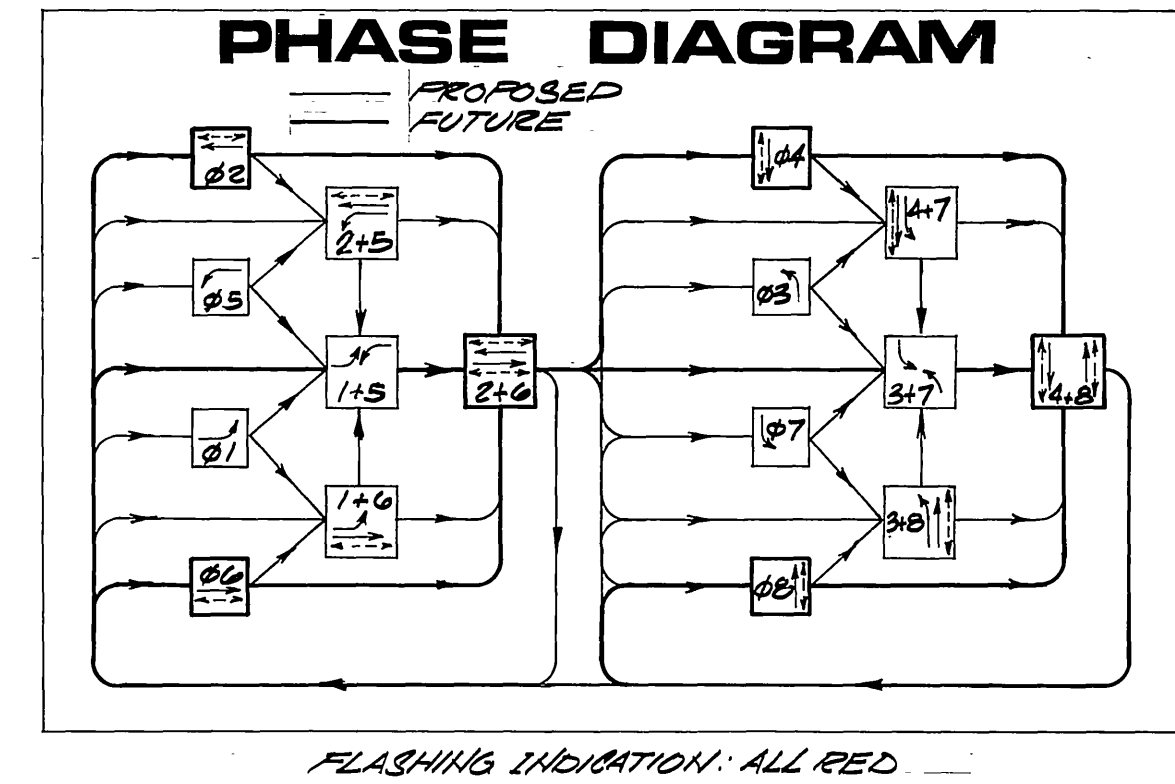
NOTE: ALL END PIPE TENONS ARE TL TIP



### CONDUCTOR SCHEDULE

CONTROL FUNCTION	CONDUCTORS	CONDUIT RUN																			
		1	2	3	4	5	6	7	8	9	10	11	12	13	14	15	16	17	18	19	20
VEHICLE HEAD #14 (FUT.)	#14 TW	3	3	3	3	3	3	3	3	3	3	3	3	3	3	3	3	3	3	3	3
VEHICLE HEAD #15 (FUT.)	#15 TW	3	3	3	3	3	3	3	3	3	3	3	3	3	3	3	3	3	3	3	3
PED HEAD #16	#16 TW	2	2	2	2	2	2	2	2	2	2	2	2	2	2	2	2	2	2	2	2
PED POSITION #17	#17 TW	2	2	2	2	2	2	2	2	2	2	2	2	2	2	2	2	2	2	2	2
SPARES	#18 TW	3	3	3	3	3	3	3	3	3	3	3	3	3	3	3	3	3	3	3	3
TRV COMMON	#19 TW	1	1	1	1	1	1	1	1	1	1	1	1	1	1	1	1	1	1	1	1
DET CABLES #20 (FUT.)	#20 PE				4	4	4	4	4	4	4	4	4	4	4	4	4	4	4	4	4
ST LANE SIGN #21	#21 TW	2	2	2	2	2	2	2	2	2	2	2	2	2	2	2	2	2	2	2	2
TRV COMMON #22	#22 TW	1	1	1	1	1	1	1	1	1	1	1	1	1	1	1	1	1	1	1	1
SIGNAL SERVICE #23	#23 THW	2	2	2	2	2	2	2	2	2	2	2	2	2	2	2	2	2	2	2	2
LUMINAIRE #24	#24 TW	2	2	2	2	2	2	2	2	2	2	2	2	2	2	2	2	2	2	2	2
TOTALS	#14 TW	13	10	20	57	26	19	16	10												
	#15 TW	3	3	3	13	6	6	4	4												
	#16 TW	2	2	2	2	2	2	2	2												
	#17 TW	2	2	2	2	2	2	2	2												
	#18 THW	2	2	2	2	2	2	2	2												
(EQUIV # 14)		(215)	(235)	(275)	(1036)	(529)	(455)	(265)	(235)												
CONDUIT SIZE		2"	2 1/2"	3"	3 1/2"	3"	2 1/2"	2 1/2"	2"												

**NOTES:**  
 1. FUTURE PHASE CONDUCTORS ARE INSTALLED IN SHAFT & MUST BE OF 34A-4-70 STANDARD.  
 2. CONDUCTORS TO LOCATIONS D & H ARE FUTURE PHASE COLOR CODES; PRESENT PHASES ARE NUMBERED ON CONDUCTORS IN PULL BOXES AND CONTROLLER CABINET.



REF. DWG'S # D-254, S-783, R-1286, R-1603, R-2142

<b>CITY OF RIVERSIDE</b> PUBLIC WORKS DEPARTMENT APPROVED: _____ BY: _____ DATE: 8/13/31 PRINCIPAL ENGINEER PARK DEPARTMENT TRAFFIC DIVISION CHIEF P. W. ENGINEER DESIGNED BY: _____ DRAWN BY: _____ CHECKED BY: _____		TRAFFIC SIGNAL <b>GOLDEN AVENUE AT PIERCE STREET</b> APPROVED BY: _____ PUBLIC WORKS DIRECTOR DATE: 8/13/31 ACCOUNT NO. 20-576-34-30 <b>X-476</b> SHEET _____ OF _____ HORIZ. SCALE: 1"=20' VERT. SCALE: 1"=	
---	--	---	--