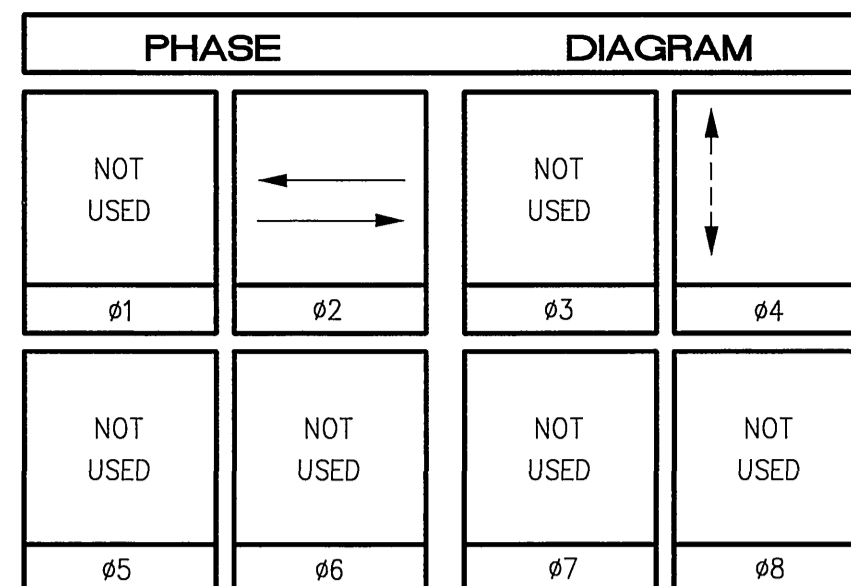


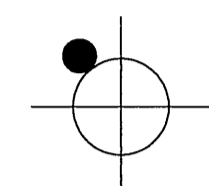
CONDUCTOR		TABLE			
CONTROL FUNCTION	CONDUCTORS	CONDUCTOR RUNS			
		1	2	3	4
VEHICLE & PEDESTRIAN HEADS, PEDESTRIAN PUSH BUTTONS, SPARES & COMMONS	12 CONDUCTOR IMSA	-	-	-	-
	9 CONDUCTOR IMSA	1	2	2	3
	5 CONDUCTOR IMSA	-	-	1	1
	3 CONDUCTOR IMSA	-	1	2	2
DETECTOR CABLE	#16/2	-	1	2	2
PHASE 2		-	1	2	2
EVPE CABLE	#20/4	-	-	-	1
IISNS	#12	-	-	-	-
LUMINAIRES	#8	2	2	2	-
SIGNAL SERVICE	#6	-	-	2	2
CONDUIT SIZE		2"	3"	3"	2-3"



POLE							SCHEDULE				
No.	TYPE	STANDARD			LUMINAIRE HPS	IISNS LEGEND	SIGNAL MOUNTING			PPB PHASE	REMARKS
		HGT.	SIG. M.A.	LUM. M.A.			VEHICLE	PED	AUDIBLE		
1	19-2-80	30'	25'	12'	250W	-	-	MAS	SV-1-T	-	-
2	1-A	7'	-	-	-	-	-	-	TP-1-T	((C))	ø4
3	19-2-80	30'	25'	12'	250W	-	-	MAS	SV-1-T	-	-
4	1-A	10'	-	-	-	-	-	-	TV-1-T	SP-1-T	((C)) ø4

NOTE: ALL POLES AND MAST ARMS WILL BE CITY-FURNISHED. THE CONTRACTOR SHALL PROVIDE ALL ANCHOR BOLTS, HARDWARE AND OTHER APPURTENANCES REQUIRED FOR THE INSTALLATION OF CITY-FURNISHED POLES.
 ((C)) OR ((P)) - INDICATES AUDITORY PEDESTRIAN SIGNAL TO BE INSTALLED; ((C)) INDICATES CUCKOO SOUND; ((P)) INDICATES PEEP-PEEP SOUND.

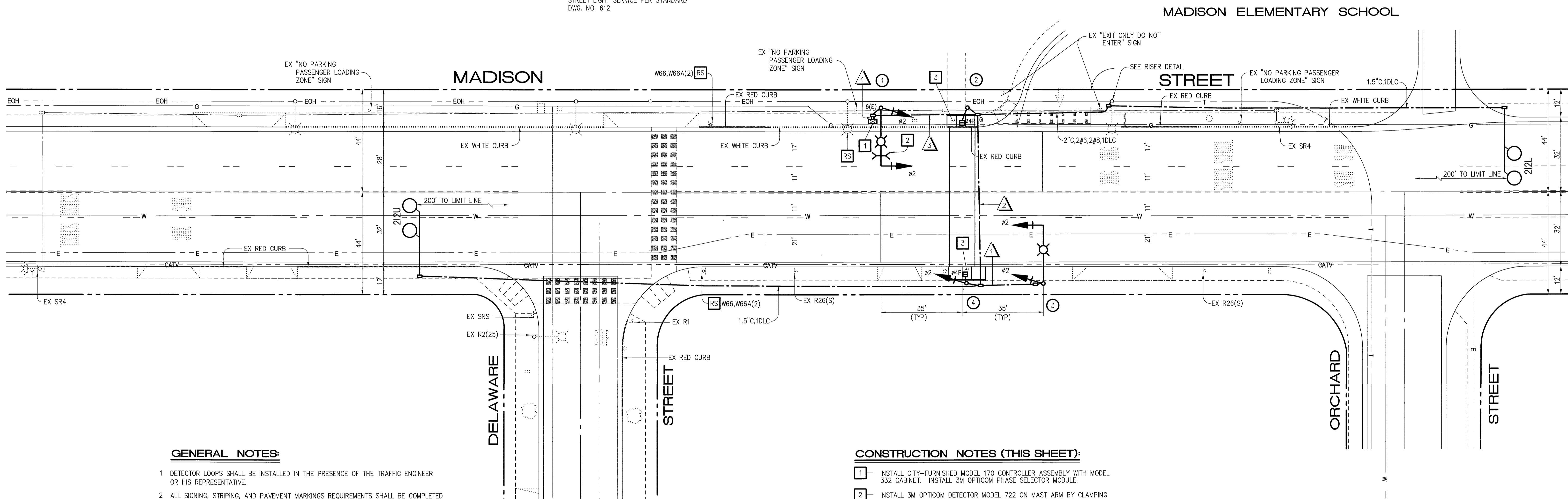
PP #12825J



RISER DETAIL

INSTALL 120V SIGNAL, 120V SIGN AND 240V STREET LIGHT SERVICE PER STANDARD DWG. NO. 612

SCALE: 1" = 20'



GENERAL NOTES:

- DETECTOR LOOPS SHALL BE INSTALLED IN THE PRESENCE OF THE TRAFFIC ENGINEER OR HIS REPRESENTATIVE.
- ALL SIGNING, STRIPING, AND PAVEMENT MARKINGS REQUIREMENTS SHALL BE COMPLETED AT LEAST ONE DAY PRIOR TO TURN-ON.
- TYPICAL DETECTOR LOOP SPACING: 10', 15', 30' (WHERE APPLICABLE).
- PAVEMENT DELINEATION SHOWN HEREON IS FOR REFERENCE ONLY. CITY FORCES SHALL PERFORM ALL PERMANENT PAINTING (INSTALLATION AND REMOVALS) WORK.
- ALL VEHICLE HEADS SHALL HAVE 12" LENSES WITH RED, YELLOW, AND GREEN 'LED' TYPE INDICATIONS.
- PEDESTRIAN SIGNAL HEADS SHALL HAVE 'LED' TYPE INDICATIONS.
- PEDESTRIAN PUSH BUTTONS SHALL BE ADA APPROVED TYPE.

CONSTRUCTION NOTES (THIS SHEET):

- INSTALL CITY-FURNISHED MODEL 170 CONTROLLER ASSEMBLY WITH MODEL 332 CABINET. INSTALL 3M OPTICOM PHASE SELECTOR MODULE.
- INSTALL 3M OPTICOM DETECTOR MODEL 722 ON MAST ARM BY CLAMPING METHOD. EXACT LOCATION OF DETECTOR TO BE DETERMINED BY ENGINEER IN THE FIELD.
- CONSTRUCT P.C.C. CURB RAMP PER CITY STD. (2 EA.).



TRAFFIC No: 1575
 DATE: 6-14-01
 AGA Job No.: 134-003
 AGA File Name: MADDELSG
 Print Date: 6/14/01
 Last Revision: 6/14/01

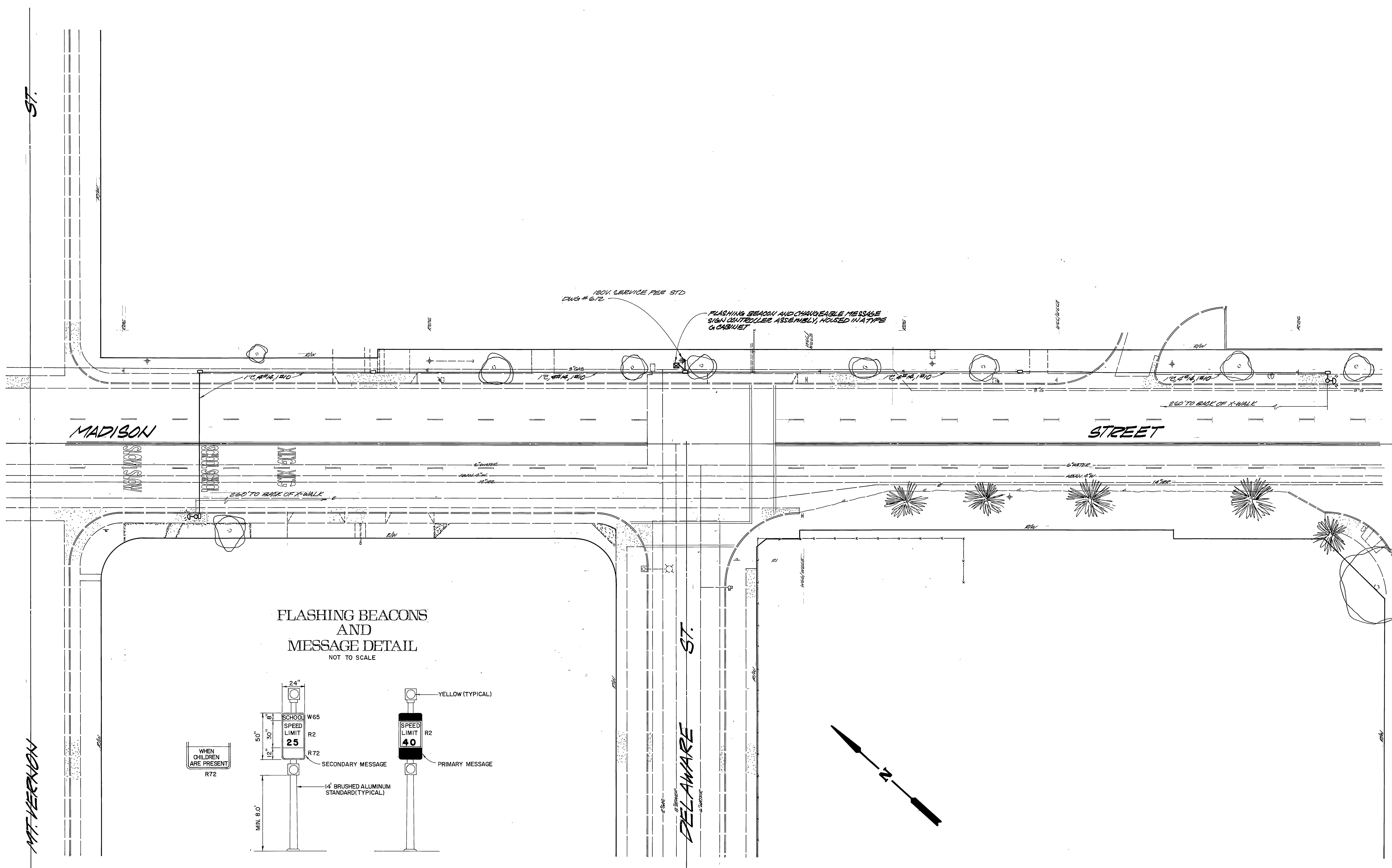
ALBERT GROVER & ASSOCIATES
 TRANSPORTATION CONSULTING ENGINEERS
 211 E. Imperial Hwy., Suite 208 Fullerton, CA 92835
 (714) 992-2990
 FAX 952-2883



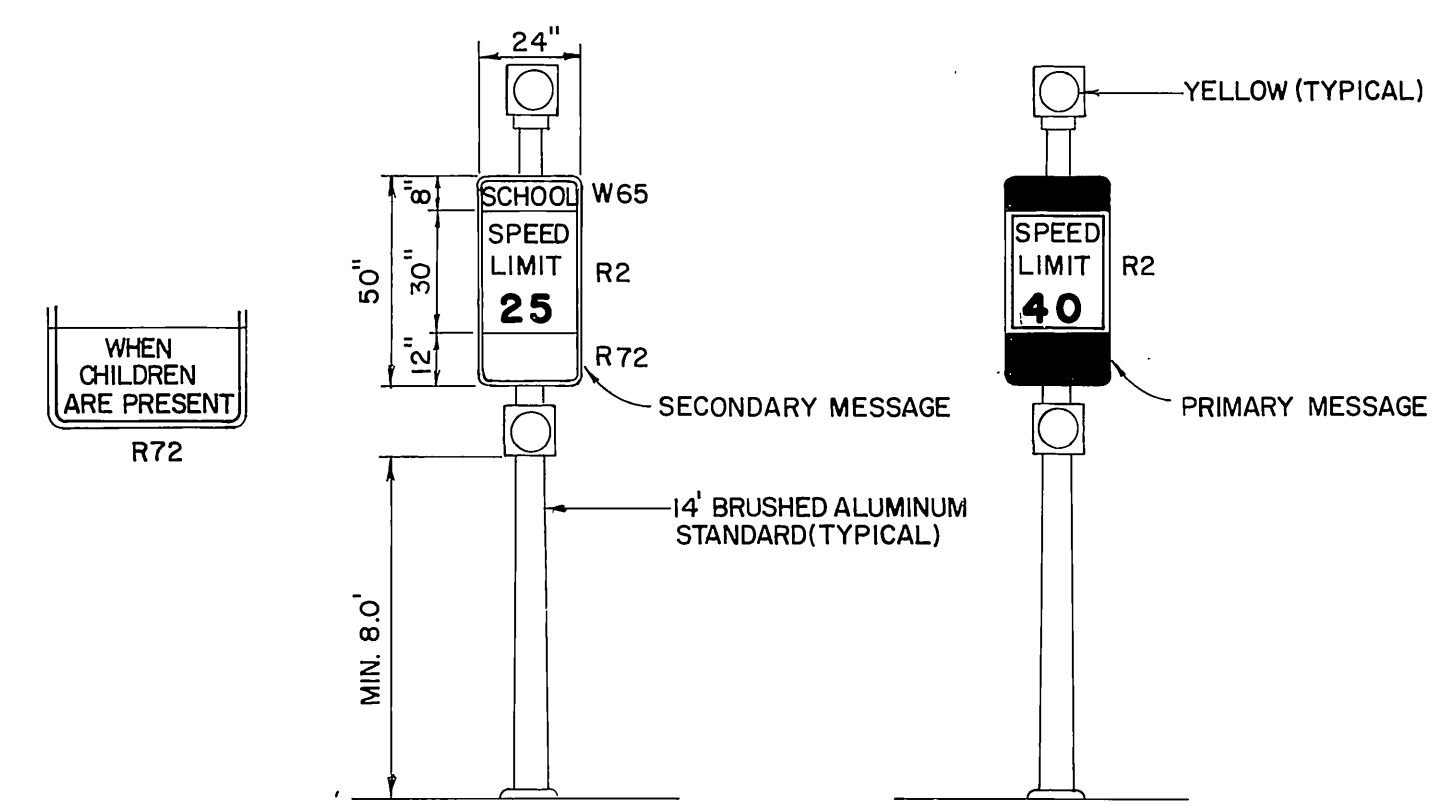
CITY OF RIVERSIDE, CALIFORNIA DEPARTMENT OF PUBLIC WORKS				TRAFFIC SIGNAL PLAN		ACCOUNT NO.
APPROVED BY	DATE	BY	DATE	APPROVED BY		X-479
PRINCIPAL ENGINEER	8/14/01	R. McSwath	8/14/01	PUBLIC WORKS DIRECTOR		
INSPECTION	8/14/01			DATE		SHEET -- OF --
TRAFFIC DIVISION	8/14/01			DATE 8-20-2001		
CHIEF P. W. ENGINEER	8/14/01			HORIZ. SCALE: 1" = 20'		VERT. SCALE: 1" = --
PUBLIC UTILITIES	8/14/01					
DESIGNED BY	DRAWN BY	CHECKED BY				

ST.

MT. VERNON



FLASHING BEACONS AND MESSAGE DETAIL
NOT TO SCALE



<p>CITY OF RIVERSIDE PUBLIC WORKS DEPARTMENT</p>				<p>FLASHING BEACONS DELAWARE STREET AT MADISON STREET</p>		<p>ACCOUNT NO. X-479</p>
APPROVED BY	DATE	BY	APPROVED BY	<p>DATE 4/2/23</p>		
PRINCIPAL ENGINEER	3/1/23	225	PUBLIC WORKS DIRECTOR	<p>SHEET _____ OF _____</p>		
TRAFFIC DIVISION	3/1/23	225	CHIEF P.W. ENGINEER	<p>HORIZ. SCALE: 1" = 20' VERT. SCALE: 1" =</p>		
DESIGNED BY	DRAWN BY	CHECKED BY	DATE	<p>DATE 4/2/23</p>		