

STRIPING LEGEND

- INDICATES NEW STRIPING & PAVEMENT MARKINGS TO BE INSTALLED.
- INDICATES EXISTING STRIPING & PAVEMENT MARKINGS TO REMAIN.
- INDICATES EXISTING STRIPING & PAVEMENT MARKINGS TO BE REMOVED.

STRIPING QUANTITIES

REMOVALS:
179 S.F.
INSTALLATION:
415 S.F. PAVEMENT MARKINGS
86 L.F. DOUBLE YELLOW
160 L.F. 8" BARRIERS STRIPE

EQUIPMENT SCHEDULE

LOCATION	STANDARD	VEHICLE HEADS			PEDESTRIAN HEADS			LUMINAIRE	INT ILLUM STREET NAME SIGN	REMARKS
		HEAD	MOUNTING	BACK PLATE	HEAD	MOUNTING	PPB			
A	1A(10')	1 W4 C(12) 7U-1-T	1							SEE PHASE VEHICULAR INDICATIONS
B	1A(10')	2W3C	7U-2-T	2						
C	16-2-80	1W3C(12) MAS		2			250W	SIERRA VISTA		SALVAGE 60J STD. DEGRADE LUMINAIRE TO NEW STD. SEE PHASE VEHICULAR INDICATIONS
D	16-2-80	1W3C(12) MAS		2			PIERCE	11500		INT. ILLUM. SIGN TO HAVE MESSAGE ON ONE SIDE ONLY, FACING SIERRA VISTA. SEE PHASE VEHICULAR INDICATIONS
E	19-4-80	1W3C(12) MAS		2			250W	SIERRA VISTA		SALVAGE 60J STD. DEGRADE LUMINAIRE AND SIGNS TO NEW STD.
F	16-2-80	1W3C(12) MAS		1						
G	16-2-80	1W3C(12) MAS		1			200W			NEW LUMINAIRE SHALL BE HIGH PRESSURE SODIUM
H	16-2-80	1W3C(12) MAS		1						SEE PHASE VEHICULAR INDICATIONS

EXISTING LUMINAIRES ARE HIGH PRESSURE SODIUM VAPOR.

PHASE 5 DETECTOR SHALL HAVE TIME EXTENSION FEATURE.

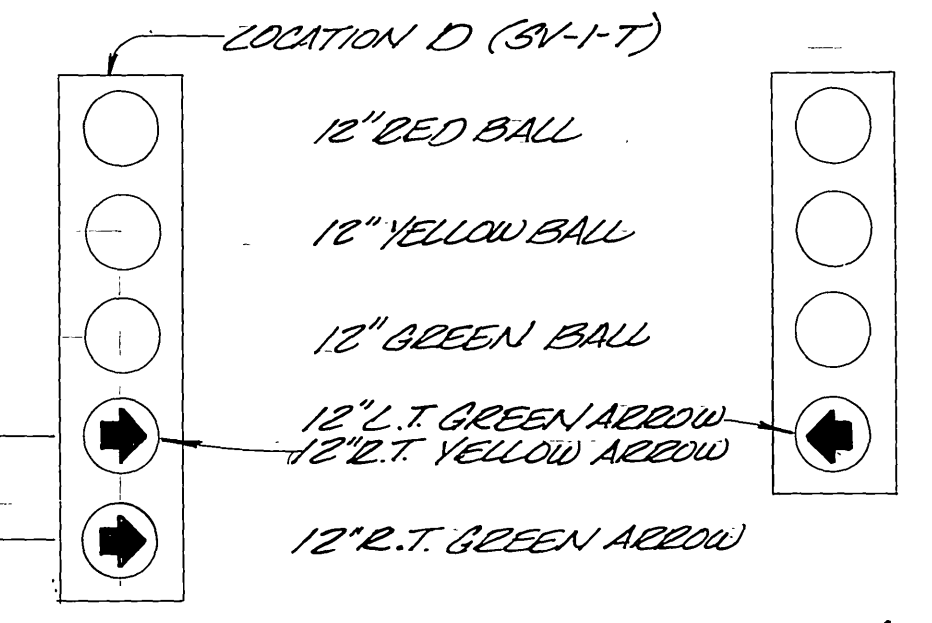
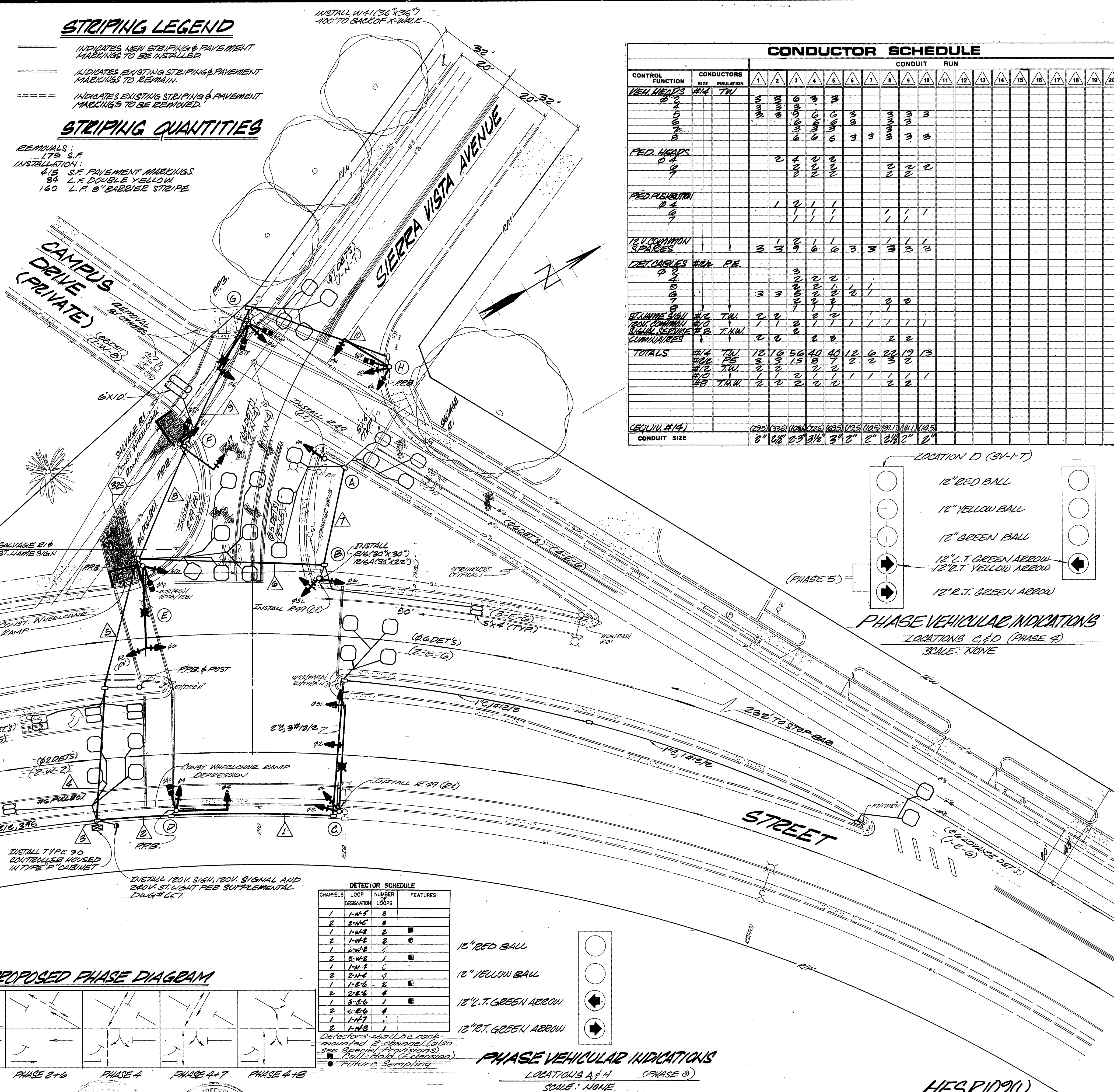
ERECT W41 (36" X 36") ON PIERCE NORTH SOUTH OF SIERRA VISTA. LOCATION TO BE DETERMINED IN THE FIELD BY THE ENGINEER. MOUNTING TO BE ON EXIST. S.I. STD. AND WOOD POST; CONTRACTOR SHALL PROVIDE 4" X 4" POST AND ALL OTHER INCIDENTALS FOR BOTH MOUNTINGS.

CONSTRUCTION NOTES (S/W)

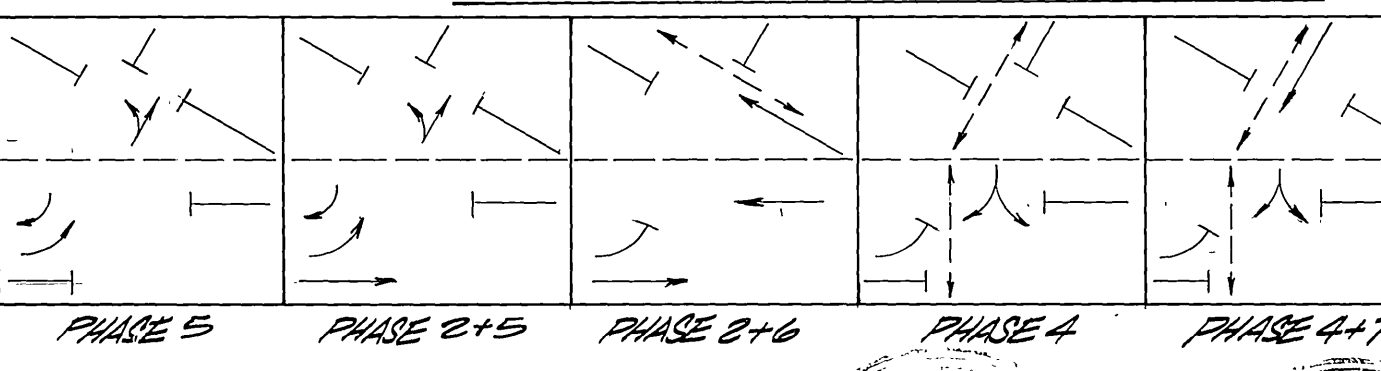
- CONSTRUCT WHEELCHAIR RAMPS OR DEPRESSION PER STD. PLANS NB-814NB-8
- CONSTRUCT PWS SIDEWALK PER SUPPLEMENTAL DWG # 305

CONDUCTOR SCHEDULE

CONTROL FUNCTION	CONDUCTORS	CONDUIT RUN																			
		1	2	3	4	5	6	7	8	9	10	11	12	13	14	15	16	17	18	19	20
VEH. HEADS	1W4 C																				
PEDESTRIAN	2W3 C																				
12" LUMINAIRE	1W3 C																				
DETECTORS	1W3 C																				
ST. ILLUM. SIGN	1W3 C																				
VEH. HEADS	1W4 C																				
PEDESTRIAN	2W3 C																				
12" LUMINAIRE	1W3 C																				
DETECTORS	1W3 C																				
ST. ILLUM. SIGN	1W3 C																				
TOTALS		12	10	56	40	40	12	6	22	19	13										

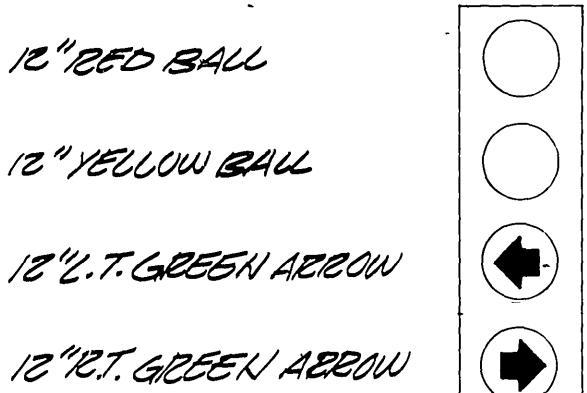


PROPOSED PHASE DIAGRAM

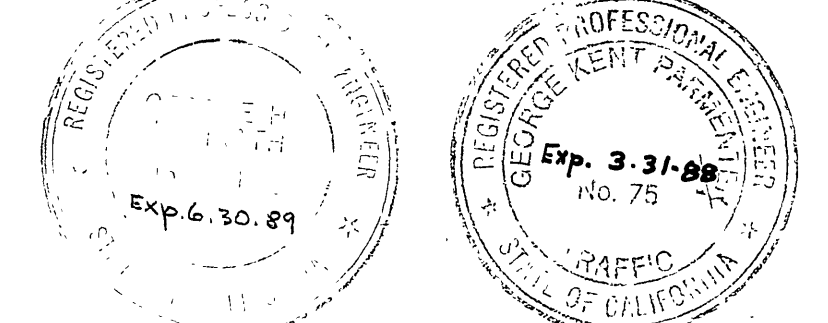
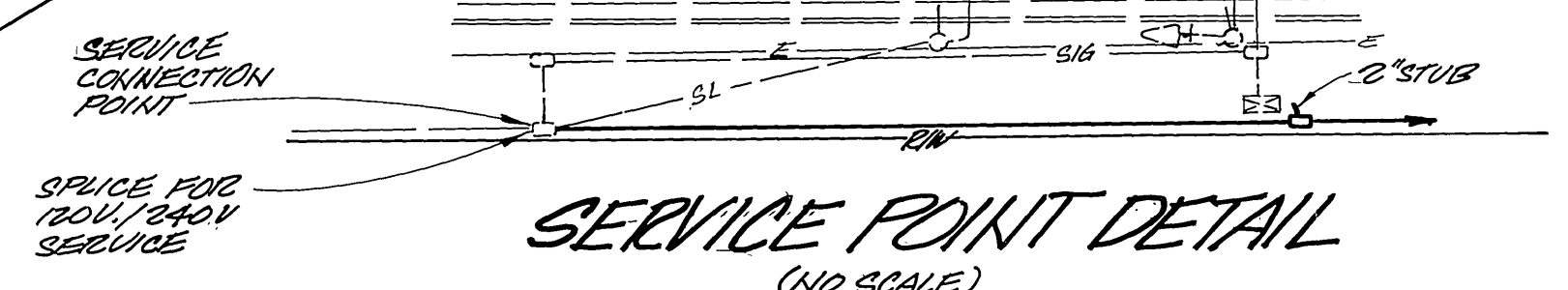


DETECTOR SCHEDULE

CHANNEL	LOOP DESIGNATION	NUMBER OF LOOPS	FEATURES
1	1-W-5	3	
2	2-W-5	3	
1	1-W-2	2	
2	2-W-2	2	
1	1-W-3	1	
2	2-W-3	1	
1	1-W-4	1	
2	2-W-4	1	
1	1-E-6	2	
2	2-E-6	2	
1	1-E-4	1	
2	2-E-4	1	
1	1-W-7	1	
2	2-W-7	1	



SERVICE POINT DETAIL



CITY OF RIVERSIDE PUBLIC WORKS DEPARTMENT

APPROVED BY: DATE: 2/15/85
 PRINCIPAL ENGINEER: [Signature]
 TRAFFIC DIVISION: [Signature]
 CHIEF P.W. ENGINEER: [Signature]
 PUBLIC UTILITIES: [Signature]

TRAFFIC SIGNALS PIERCE STREET AT SIERRA VISTA AVENUE

ACCOUNT NO. 30-576-395-01
 X-480 SHEET 4 OF 4
 HORIZ. SCALE: 1" = 20' VERT. SCALE: 1" =