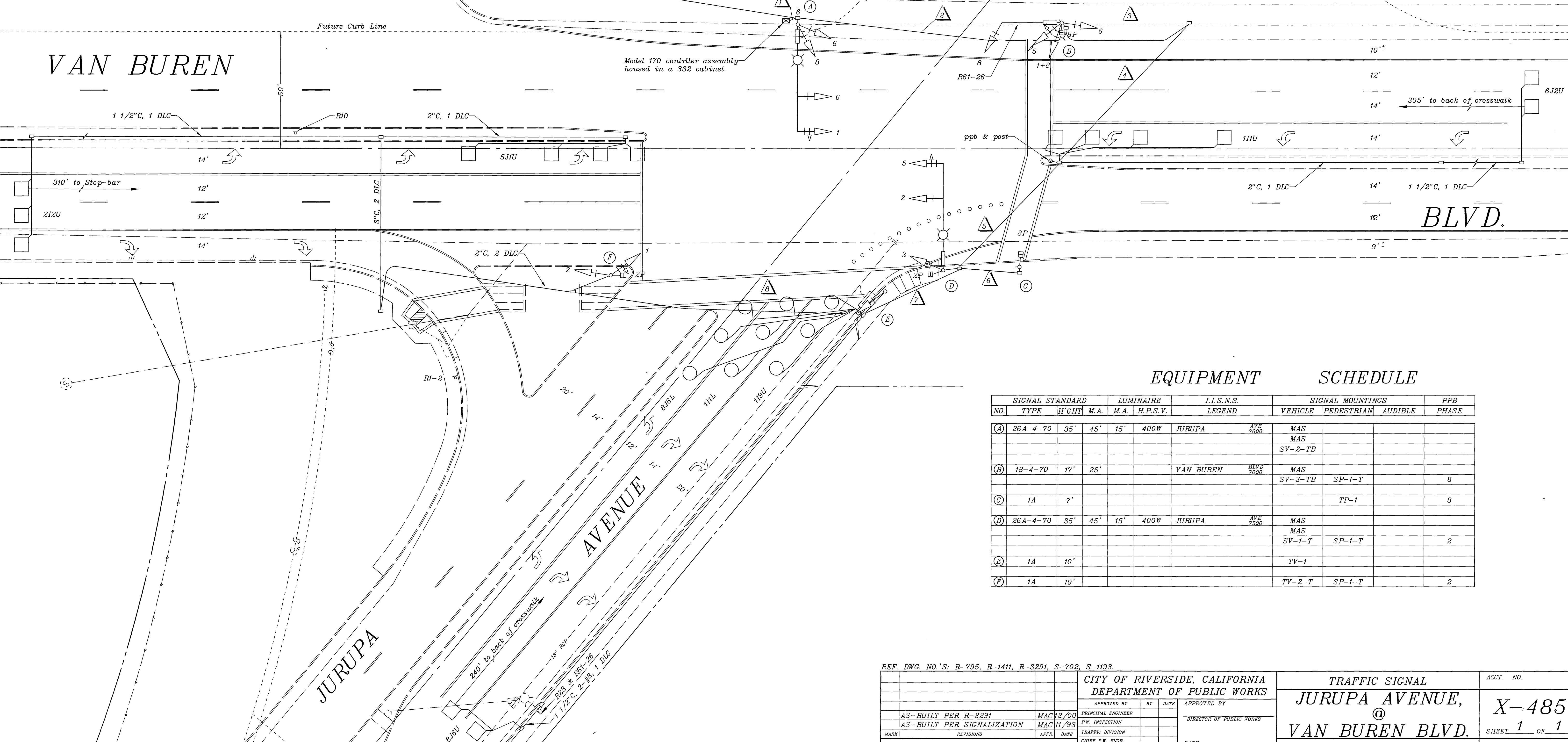
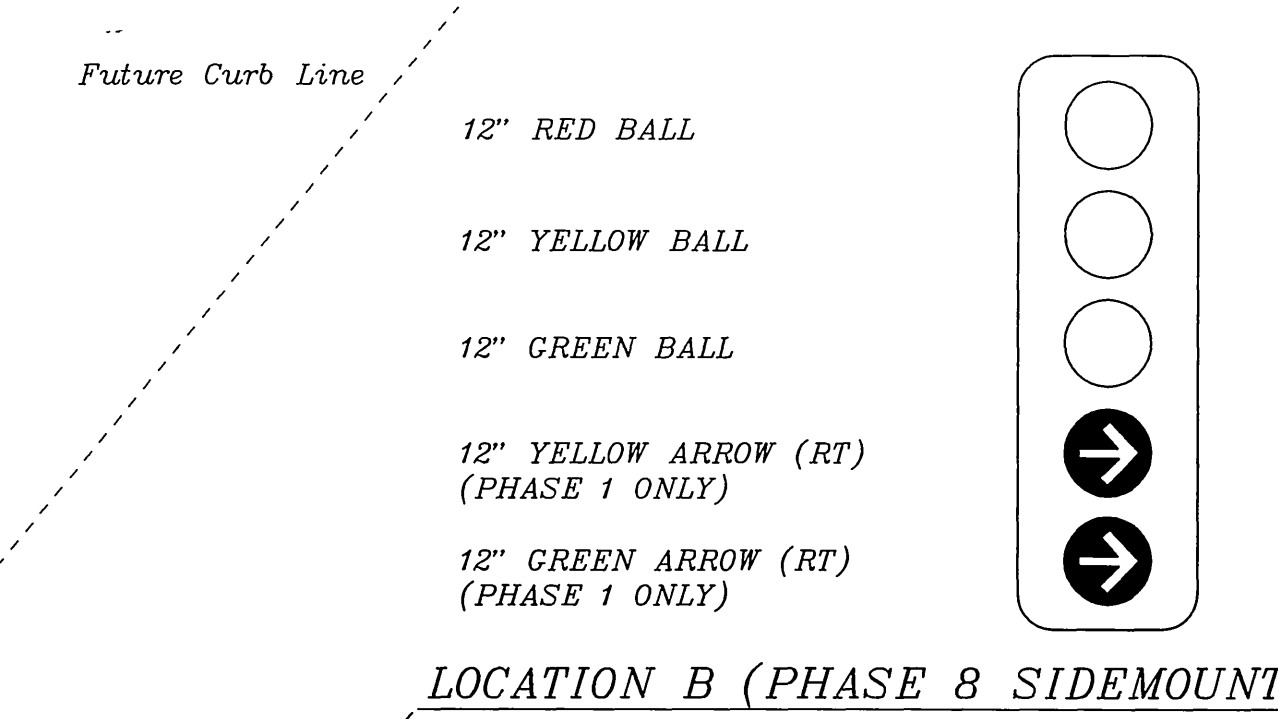
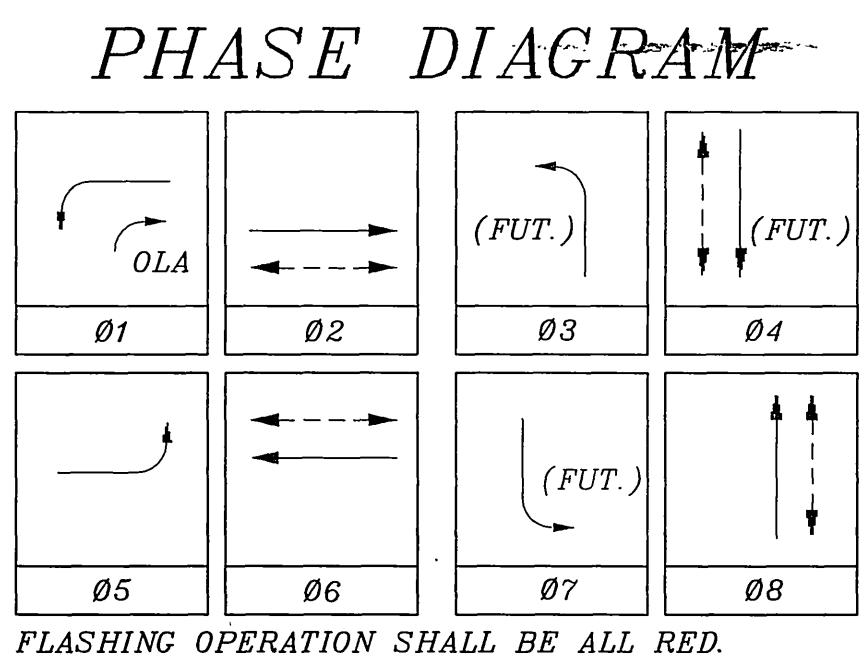
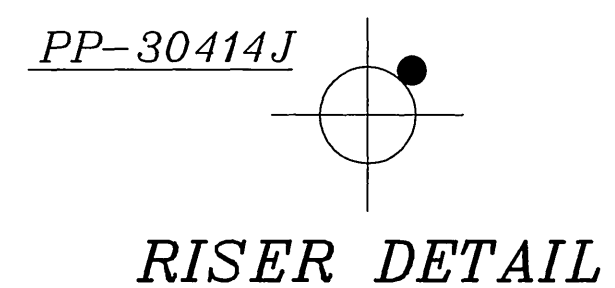


CONDUCTOR		SCHEDULE									
CONTROL FUNCTION	CONDUCTORS SIZE INSULATION	RUNS									
		1	2	3	4	5	6	7	8	9	10
VEHICLE HEADS	#14 T.W.	6	3	3	3	3	-	3	3		
PHASE 1		3	3	3	3	3	-	3	3		
PHASE 2		3	3	3	3	3	-	3	3		
PHASE 5		3	3	3	3	3	-	3	3		
PHASE 6		6	3	-	-	-	-	-	-		
PHASE 8		6	3	3	3	3	-	3	-		
OLA		-	2	-	-	-	-	-	-		
PED. HEADS											
PHASE 2		2	2	2	2	2	-	2	2		
PHASE 8		2	2	2	2	2	-	2	-		
PED. PUSH BUTTON											
PHASE 2		1	1	1	1	1	-	1	1		
PHASE 8		1	1	1	1	1	-	1	-		
SPARES		3	3	3	3	3	3	3	3	3	3
12V COMMON		1	1	1	1	1	1	1	1	1	1
DETECTORS	#16/2 P.E.										
PHASE 1		1	1	1	1	1	-	1	1		
PHASE 2		1	1	1	1	1	-	1	1		
PHASE 5		1	1	1	1	1	-	1	1		
PHASE 6		1	1	1	1	1	-	1	-		
PHASE 8		4	4	4	4	4	-	4	-		
I.I.S.N.S.	#12 T.W.	-	2	2	2	2	-	-	-		
120V COMMON	#10 T.W.	1	1	1	1	1	1	1	1	1	1
LUMINAIRES	#8 T.H.W.	-	2	2	2	2	-	-	-		
SIGNAL SERVICE	#6 T.H.W.	2	-	-	-	-	-	-	-		
CONDUIT SIZE		2"	3"	3"	3"	3"	3"	2"	2 1/2"	2"	



EQUIPMENT		SCHEDULE								
NO.	SIGNAL STANDARD TYPE	H'GHT	M.A.	LUMINAIRE M.A.	I.I.S.N.S. H.P.S.V.	LEGEND	SIGNAL MOUNTINGS			PPB PHASE
							VEHICLE	PEDESTRIAN	AUDIBLE	
(A)	26A-4-70	35'	45'	15'	400W	JURUPA AVE 7600	MAS			
							MAS			
							SV-2-TB			
(B)	18-4-70	17'	25'			VAN BUREN BLVD 7600	MAS			8
							SV-3-TB	SP-1-T		
(C)	1A	7'						TP-1		8
(D)	26A-4-70	35'	45'	15'	400W	JURUPA AVE 7600	MAS			
							MAS			
							SV-1-T	SP-1-T		2
(E)	1A	10'						TV-1		
(F)	1A	10'						TV-2-T	SP-1-T	2

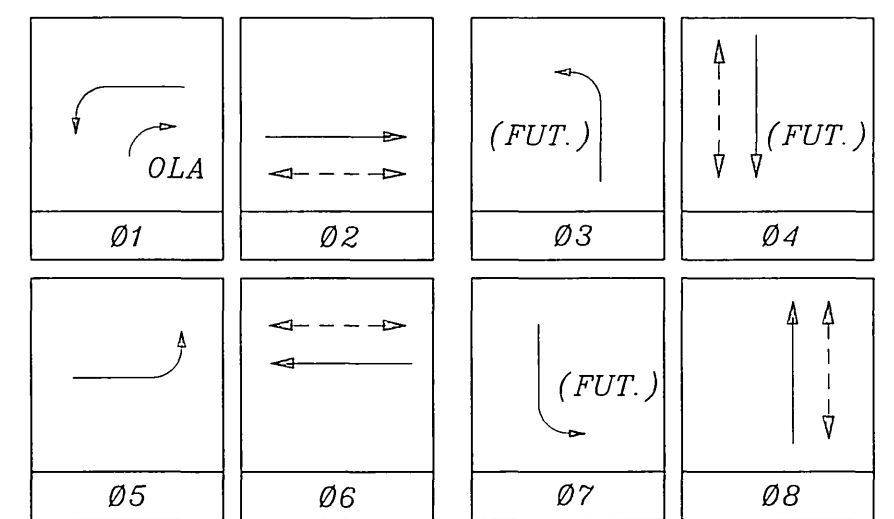
REF. DWG. NO.'S: R-795, R-1411, R-3291, S-702, S-1193.

CITY OF RIVERSIDE, CALIFORNIA DEPARTMENT OF PUBLIC WORKS		TRAFFIC SIGNAL <b>JURUPA AVENUE, @ VAN BUREN BLVD.</b>		ACCT. NO. <b>X-485</b>
APPROVED BY MAC 12/00 PRINCIPAL ENGINEER	BY DATE	APPROVED BY DIRECTOR OF PUBLIC WORKS		SHEET 1 OF 1
AS-BUILT PER R-3291 AS-BUILT PER SIGNALIZATION	MAC 11/93 MAC 11/93	DATE		FILE NAME: X485AS.DWG
MARK REVISIONS	APPR. DATE	SCALE: 1" = 20'		
DESIGNED BY: MAC	DRAWN BY: MAC	CHECKED BY:		

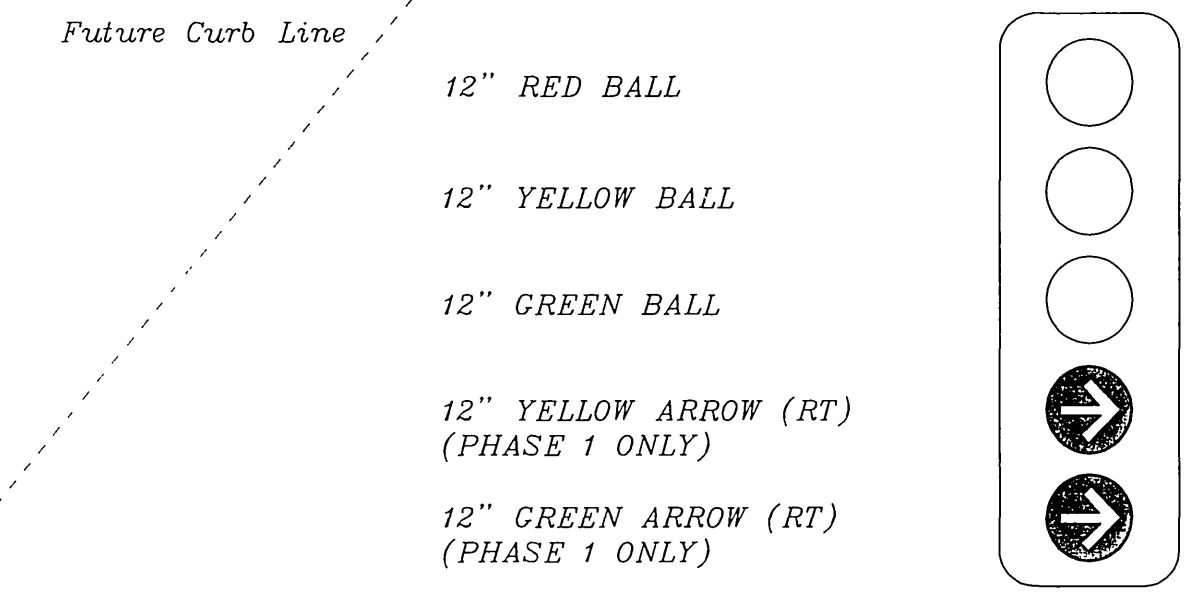
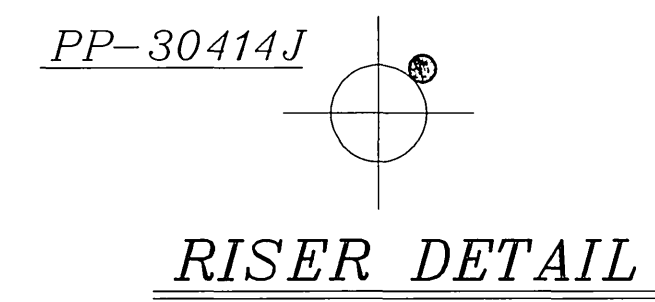
CONDUCTOR		SCHEDULE												
CONTROL FUNCTION	CONDUCTORS	RUNS												
		SIZE	INSULATION	1	2	3	4	5	6	7	8			
VEHICLE HEADS	#14	TW	6	3	3	3	3	3	3	3	3	3	3	3
PHASE 1			3	3	3	3	3	3	3	3	3	3	3	3
PHASE 2			3	3	3	3	3	3	3	3	3	3	3	3
PHASE 5			6	3	3	3	3	3	3	3	3	3	3	3
PHASE 6			6	3	3	3	3	3	3	3	3	3	3	3
PHASE 8			6	3	3	3	3	3	3	3	3	3	3	3
OLA			2	2	2	2	2	2	2	2	2	2	2	2
PED HEADS			2	2	2	2	2	2	2	2	2	2	2	2
PHASE 2			2	2	2	2	2	2	2	2	2	2	2	2
PHASE 8			2	2	2	2	2	2	2	2	2	2	2	2
PED PUSH BUTTON			1	1	1	1	1	1	1	1	1	1	1	1
PHASE 2			1	1	1	1	1	1	1	1	1	1	1	1
PHASE 8			1	1	1	1	1	1	1	1	1	1	1	1
SPARES			3	3	3	3	3	3	3	3	3	3	3	3
12V COMMON			1	1	1	1	1	1	1	1	1	1	1	1
DETECTORS	#16/2	P E	1	1	1	1	1	1	1	1	1	1	1	1
PHASE 1			1	1	1	1	1	1	1	1	1	1	1	1
PHASE 2			1	1	1	1	1	1	1	1	1	1	1	1
PHASE 5			1	1	1	1	1	1	1	1	1	1	1	1
PHASE 6			1	1	1	1	1	1	1	1	1	1	1	1
PHASE 8			1	1	1	1	1	1	1	1	1	1	1	1
I I S N S	#12	T W	2	2	2	2	2	2	2	2	2	2	2	2
120V COMMON	#10	T W	1	1	1	1	1	1	1	1	1	1	1	1
LUMINAIRES	#8	T H W	2	2	2	2	2	2	2	2	2	2	2	2
SIGNAL SERVICE	#6	T H W	2	2	2	2	2	2	2	2	2	2	2	2
CONDUIT SIZE			2"	3"	3"	3"	3"	3"	3"	2"	2"	1 1/2"	2"	2"

NOTE: Conduit run NO. 8 shall have new conductors except for DLC's, reuse.

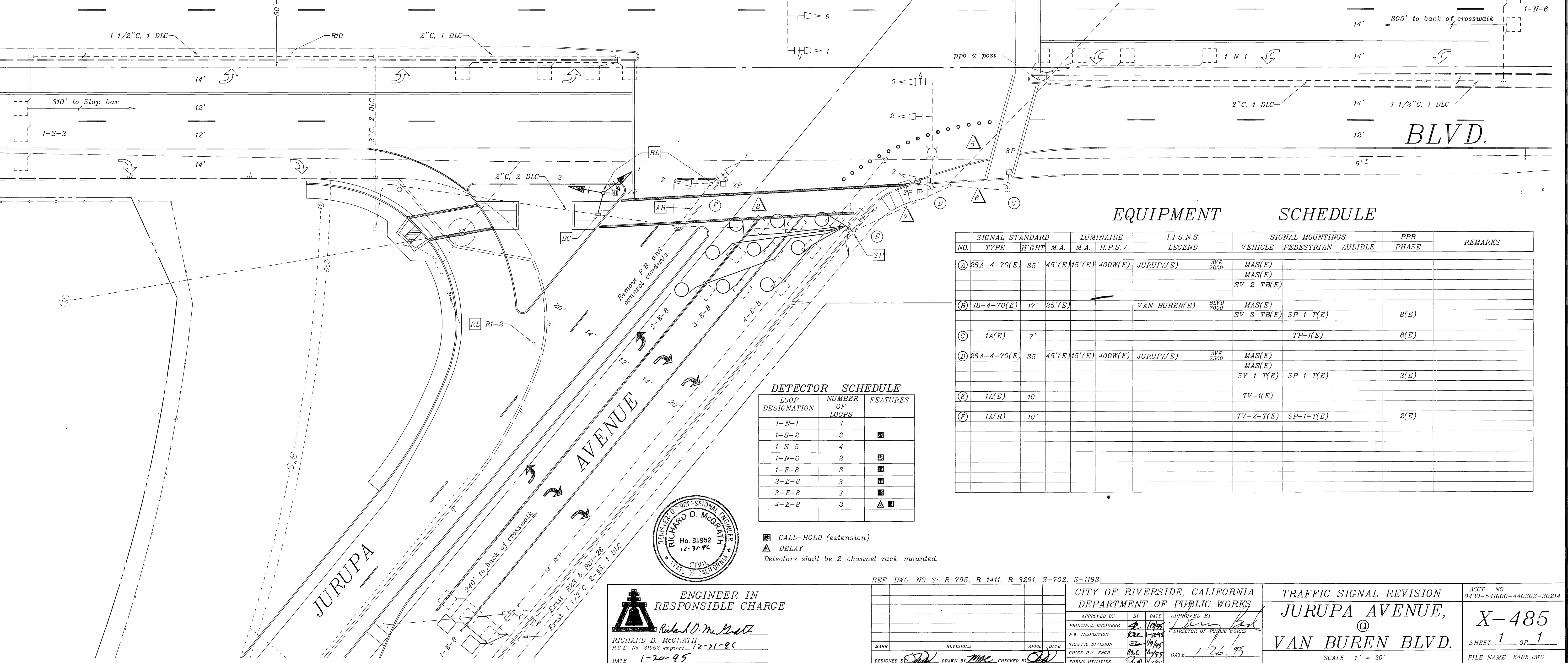
### PHASE DIAGRAM



FLASHING OPERATION SHALL BE ALL RED.



## VAN BUREN



### EQUIPMENT SCHEDULE

NO.	SIGNAL STANDARD TYPE	H'GHT	M.A.	LUMINAIRE M.A.	I.I.S.N.S. H.P.S.V.	LEGEND	SIGNAL MOUNTINGS			PPB PHASE	REMARKS
							VEHICLE	PEDESTRIAN	AUDIBLE		
(A)	26A-4-70(E)	35'	45'(E)15'(E)	400W(E)	JURUPA(E)	AVE 7500	MAS(E)				
							MAS(E)				
							SV-2-TB(E)				
(B)	18-4-70(E)	17'	25'(E)		VAN BUREN(E)	BLVD 2000	MAS(E)			8(E)	
							SV-3-TB(E)	SP-1-T(E)			
(C)	1A(E)	7'						TP-1(E)		8(E)	
(D)	26A-4-70(E)	35'	45'(E)15'(E)	400W(E)	JURUPA(E)	AVE 7500	MAS(E)				
							MAS(E)				
							SV-1-T(E)	SP-1-T(E)		2(E)	
(E)	1A(E)	10'						TV-1(E)			
(F)	1A(R)	10'						TV-2-T(E)	SP-1-T(E)	2(E)	

### DETECTOR SCHEDULE

LOOP DESIGNATION	NUMBER OF LOOPS	FEATURES
1-N-1	4	
1-S-2	3	■
1-S-5	4	
1-N-6	2	■
1-E-8	3	■
2-E-8	3	■
3-E-8	3	■
4-E-8	3	▲ ■

■ CALL-HOLD (extension)  
 ▲ DELAY  
 Detectors shall be 2-channel rack-mounted.



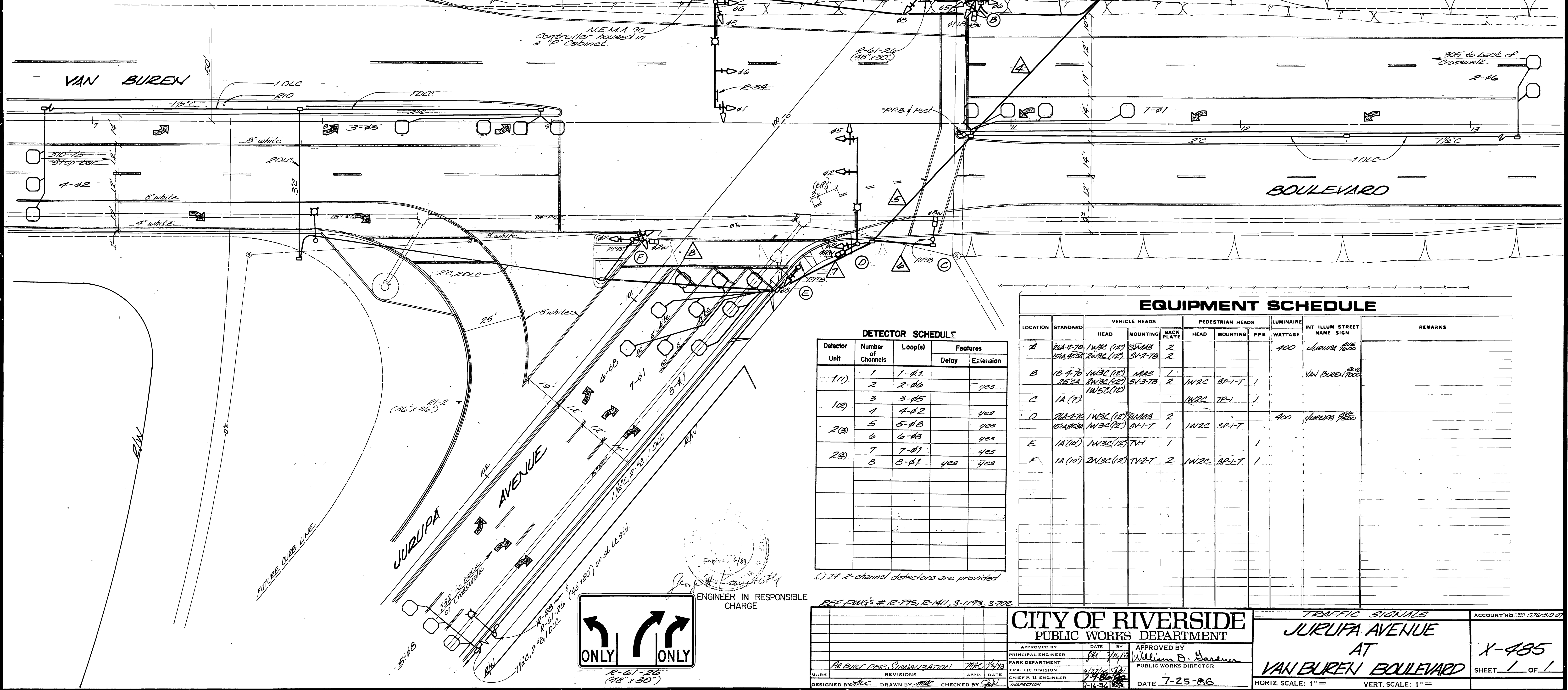
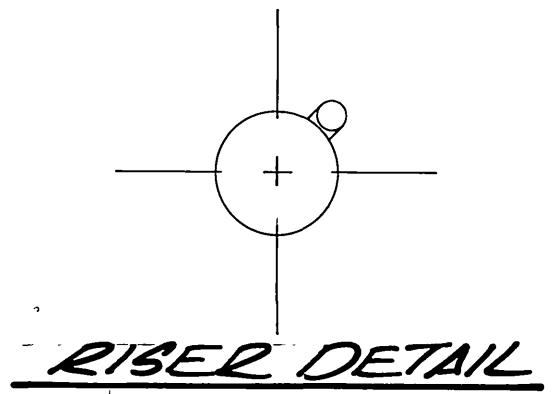
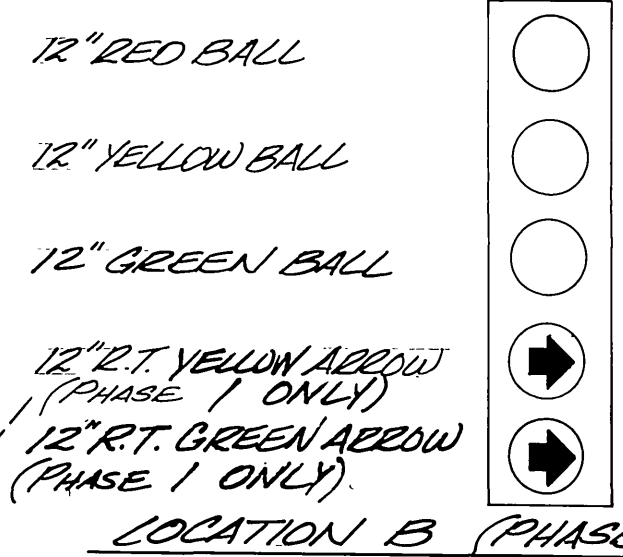
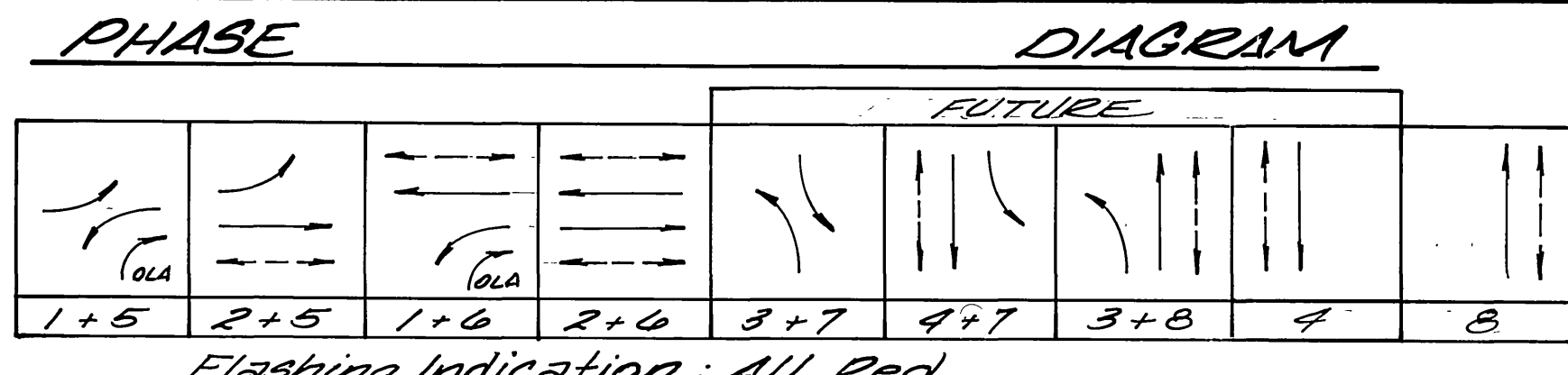
ENGINEER IN RESPONSIBLE CHARGE  
 Richard D. McGrath  
 RICHARD D. McGRATH  
 R.C.E. No. 31952 expires 12-31-86  
 DATE 1-20-95

REF. DWG. NO.'S: R-795, R-1411, R-3291, S-702, S-1193.

CITY OF RIVERSIDE, CALIFORNIA  
 DEPARTMENT OF PUBLIC WORKS  
 APPROVED BY: [Signature] DATE: 1/26/95  
 PRINCIPAL ENGINEER  
 P.W. INSPECTION: [Signature] DATE: 1/23/95  
 TRAFFIC DIVISION: [Signature] DATE: 1/19/95  
 CHIEF P.W. ENGR: [Signature] DATE: 1/19/95  
 PUBLIC UTILITIES: [Signature] DATE: 1/19/95

TRAFFIC SIGNAL REVISION  
 JURUPA AVENUE,  
 @  
 VAN BUREN BLVD.  
 ACCT. NO. 0430-541600-440303-30214  
 X-485  
 SHEET 1 OF 1  
 FILE NAME: X485.DWG  
 SCALE 1" = 20'

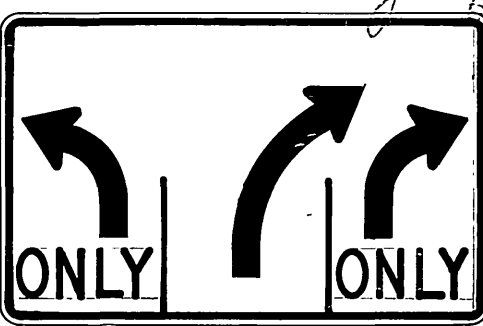
CONDUCTOR SCHEDULE		CONDUIT RUN																							
CONTROL FUNCTION	CONDUCTORS	1	2	3	4	5	6	7	8	9	10	11	12	13	14	15	16	17	18	19	20	21	22	23	24
VEH HEADS	12V TW	1	1	1	1	1	1	1	1	1	1	1	1	1	1	1	1	1	1	1	1	1	1	1	1
RED HEADS	24V TW	2	2	2	2	2	2	2	2	2	2	2	2	2	2	2	2	2	2	2	2	2	2	2	2
RED PUSHBUT	24V TW	1	1	1	1	1	1	1	1	1	1	1	1	1	1	1	1	1	1	1	1	1	1	1	
ADDRESS	120V COM	1	1	1	1	1	1	1	1	1	1	1	1	1	1	1	1	1	1	1	1	1	1	1	
120V COM	120V COM	1	1	1	1	1	1	1	1	1	1	1	1	1	1	1	1	1	1	1	1	1	1	1	
DET CABLE	12V TW	1	1	1	1	1	1	1	1	1	1	1	1	1	1	1	1	1	1	1	1	1	1	1	
24V TW	24V TW	1	1	1	1	1	1	1	1	1	1	1	1	1	1	1	1	1	1	1	1	1	1	1	
24V TW	24V TW	1	1	1	1	1	1	1	1	1	1	1	1	1	1	1	1	1	1	1	1	1	1	1	
TOTALS	12V TW	34	34	34	34	34	34	34	34	34	34	34	34	34	34	34	34	34	34	34	34	34	34	34	
24V TW	24V TW	10	10	10	10	10	10	10	10	10	10	10	10	10	10	10	10	10	10	10	10	10	10	10	
120V COM	120V COM	2	2	2	2	2	2	2	2	2	2	2	2	2	2	2	2	2	2	2	2	2	2	2	
24V TW	24V TW	2	2	2	2	2	2	2	2	2	2	2	2	2	2	2	2	2	2	2	2	2	2	2	
120V COM	120V COM	2	2	2	2	2	2	2	2	2	2	2	2	2	2	2	2	2	2	2	2	2	2	2	
CONDUIT SIZE	CONDUIT SIZE	2 1/2"	3"	3"	3"	3"	3"	3"	3"	3"	3"	3"	3"	3"	3"	3"	3"	3"	3"	3"	3"	3"	3"	3"	



Detector Unit	Number of Channels	Loop(s)	Features	
			Delay	Extension
1(1)	1	1-81		
	2	2-86		yes
1(2)	3	3-85		
	4	4-82		yes
2(3)	5	5-88		yes
	6	6-88		yes
2(6)	7	7-81		yes
	8	8-81	yes	yes

LOCATION	STANDARD	VEHICLE HEADS			PEDESTRIAN HEADS			LUMINAIRE	INT ILLUM STREET NAME SIGN	REMARKS
		HEAD	MOUNTING	BACK PLATE	HEAD	MOUNTING	PPB			
A	24-4-70 54-4534	1W3C (12) 2W3C (12)	2MMAS SV-2-7B	2			400	JURUPA AVE		
B	13-4-70 25-3A	1W3C (12) 2W3C (12)	MMAS SV-3-7B	1	1W3C	BP-1-T	1	VAN BUREN AVE		
C	1A (1)	1W3C (12)			1W3C	TP-1	1			
D	24-4-70 54-4534	1W3C (12) 2W3C (12)	2MMAS SV-1-T	2	1W3C	SP-1-T	400	JURUPA AVE		
E	1A (10)	1W3C (12)	TV-1	1			1			
F	1A (10)	2W3C (12)	TV-2-T	2	1W3C	SP-1-T	1			

Expire 6/89  
  
 WILLIAM D. GARDNER  
 ENGINEER IN RESPONSIBLE CHARGE



REF DWG'S # 12-775, 12-111, 9-173, 9-702

**CITY OF RIVERSIDE**  
**PUBLIC WORKS DEPARTMENT**

APPROVED BY: *[Signature]* DATE: 7/1/86  
 PRINCIPAL ENGINEER  
 PARK DEPARTMENT

APPROVED BY: *[Signature]*  
 WILLIAM D. GARDNER  
 PUBLIC WORKS DIRECTOR

TRAFFIC SIGNALS  
**JURUPA AVENUE**  
**AT**  
**VAN BUREN BOULEVARD**

ACCOUNT NO. 30-576-319-01  
**X-485**  
 SHEET 1 OF 1

DESIGNED BY: *[Signature]* DRAWN BY: *[Signature]* CHECKED BY: *[Signature]*  
 DATE: 7-25-86  
 HORIZ. SCALE: 1" =   
 VERT. SCALE: 1" =