

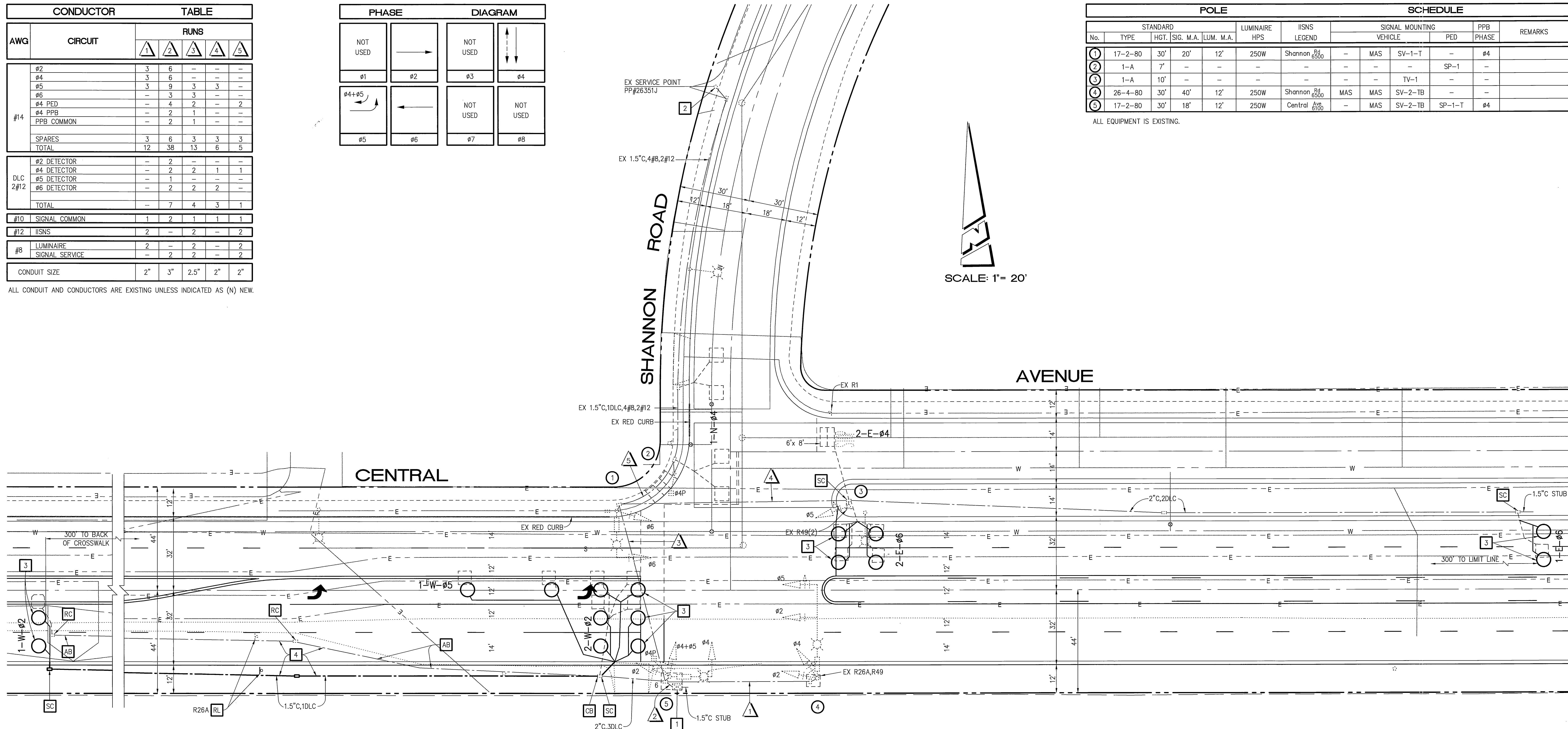
CONDUCTOR		TABLE				
AWG	CIRCUIT	RUNS				
		1	2	3	4	5
#14	Ø2	3	6	-	-	-
	Ø4	3	6	-	-	-
	Ø5	3	9	3	3	-
	Ø6	-	3	3	-	-
	Ø4 PED	-	4	2	-	2
	Ø4 PPB	-	2	1	-	-
PPB COMMON	-	2	1	-	-	
SPARES		3	6	3	3	3
TOTAL		12	38	13	6	5
DLC 2#12	Ø2 DETECTOR	-	2	-	-	-
	Ø4 DETECTOR	-	2	2	1	1
	Ø5 DETECTOR	-	1	-	-	-
	Ø6 DETECTOR	-	2	2	2	-
TOTAL		-	7	4	3	1
#10	SIGNAL COMMON	1	2	1	1	1
#12	IISNS	2	-	2	-	2
#8	LUMINAIRE	2	-	2	-	2
	SIGNAL SERVICE	-	2	2	-	2
CONDUIT SIZE		2"	3"	2.5"	2"	2"

ALL CONDUIT AND CONDUCTORS ARE EXISTING UNLESS INDICATED AS (N) NEW.

PHASE		DIAGRAM	
NOT USED	→	NOT USED	↕
Ø1	→	Ø3	↕
Ø4+Ø5	↺	NOT USED	NOT USED
Ø5	→	Ø7	↕

POLE							SCHEDULE				
No.	STANDARD			LUMINAIRE HPS	IISNS LEGEND	SIGNAL MOUNTING		PPB PHASE	REMARKS		
	TYPE	HGT.	SIG. M.A.			VEHICLE	PED				
1	17-2-80	30'	20'	12'	250W	Shannon Rd 6500	-	MAS	SV-1-T	-	Ø4
2	1-A	7'	-	-	-	-	-	-	-	SP-1	-
3	1-A	10'	-	-	-	-	-	-	TV-1	-	-
4	26-4-80	30'	40'	12'	250W	Shannon Rd 6500	MAS	MAS	SV-2-TB	-	-
5	17-2-80	30'	18'	12'	250W	Central Ave 6100	-	MAS	SV-2-TB	SP-1-T	Ø4

ALL EQUIPMENT IS EXISTING.



CONSTRUCTION NOTES (THIS SHEET):

- 1 REUSE EXISTING TYPE 90 CONTROLLER ASSEMBLY WITH TYPE P CABINET.
- 2 REUSE EXISTING 120/240V SIGNAL AND LIGHTING SERVICE.
- 3 ABANDON EXISTING LOOPS AND INSTALL NEW TYPE E 6' ROUND LOOPS.
- 4 PULL BACK EXISTING DLC AND RE-PULL IN NEW 1.5" CONDUIT.

GENERAL NOTES:

- 1 DETECTOR LOOPS SHALL BE INSTALLED IN THE PRESENCE OF THE TRAFFIC ENGINEER OR HIS REPRESENTATIVE.
- 2 ALL SIGNING, STRIPING, AND PAVEMENT MARKINGS REQUIREMENTS SHALL BE COMPLETED AT LEAST ONE DAY PRIOR TO TURN-ON.
- 3 TYPICAL DETECTOR LOOP SPACING: 10', 15', 30' (WHERE APPLICABLE).
- 4 PAVEMENT DELINEATION SHOWN HEREON IS FOR REFERENCE ONLY. CITY FORCES SHALL PERFORM ALL PERMANENT PAINTING (INSTALLATION AND REMOVALS) WORK.
- 5 SEE R-3630 FOR STREET IMPROVEMENTS.



TRAFFIC No. 1575
 DATE: 10-28-02
 AGA Job No. : 612-001
 AGA File Name: CENSHAMD
 Print Date : 10/28/02
 Last Revision : 10/28/02

ALBERT GROVER & ASSOCIATES
 TRANSPORTATION CONSULTING ENGINEERS
 211 E. Imperial Hwy., Suite 208 Fullerton, CA 92835



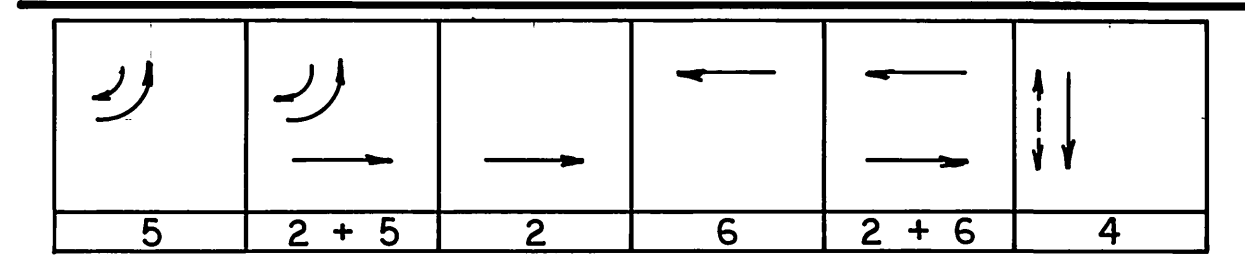
CITY OF RIVERSIDE, CALIFORNIA DEPARTMENT OF PUBLIC WORKS				TRAFFIC SIGNAL PLAN		ACCOUNT NO.
APPROVED BY: <i>[Signature]</i> PRINCIPAL ENGINEER				APPROVED BY: <i>[Signature]</i> PUBLIC WORKS DIRECTOR		X-495A
INSPECTION: <i>[Signature]</i> TRAFFIC DIVISION				DATE: 11/13/02		
DESIGNED BY: _____				DRAWN BY: _____		SHEET 1 OF 1
CHECKED BY: _____				DATE: 11/13/02		
HORIZ. SCALE: 1" = 20'				VERT. SCALE: 1" = N/A		

EQUIPMENT SCHEDULE

LOCATION	STANDARD	VEHICLE HEADS			PEDESTRIAN HEADS			LUMINAIRE	INT ILLUM	STREET NAME SIGN	REMARKS
		HEAD	MOUNTING	BACK PLATE	HEAD	MOUNTING	PPB				
A	26-4-80 12LA208A	1W3C 2W3C	MAS SV-E-TB	1 2				250W	Shannon 6500		
B	17-2-80 12LA189A	1W3C 2W3(G)C	MAS SV-E-TB	1 2				250W	Central 6500	Vehicular head for 4+5 shall be 5 section, see detail.	
C	17-2-80 12LA208A	1W3C 1W3C	MAS SV-I-T	1 1				250W	Shannon 6500	Salvage Marbelite Std. of luminaire, install P.B. & reconnect P.L.T. Conductors	
D	1A(7)								1W3C SP-1		
E	1A(10)	1W3C	TV-1								

Notes:
 1. All poles including anchor bolts shall be City furnished.
 2. All vehicular heads shall have 12" lens.
 3. All turn indications shall be 12" arrows (Red, Yellow, Green).
 4. E-49 signs shall be strapped to standards at locations as shown.

PHASE DIAGRAM



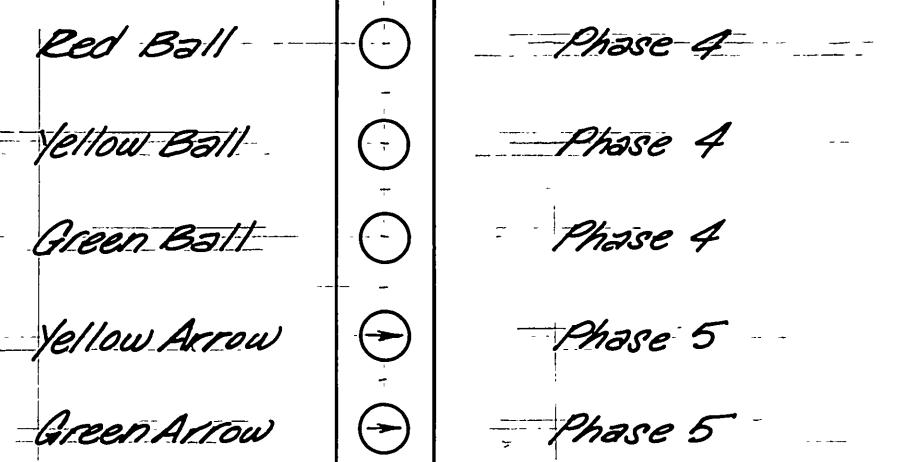
Flashing Indications: All Red

DETECTOR SCHEDULE
(for detection assignment)

CHANNELS	LOOP DESIGNATION	NUMBER OF LOOPS	FEATURES
1	1-W-2	1	● ■
2	2-W-2	4	
1	1-W-5	4	
1	1-N-4	4	
2	2-E-4	1	▲
1	1-E-6	1	● ■
2	2-E-6	4	

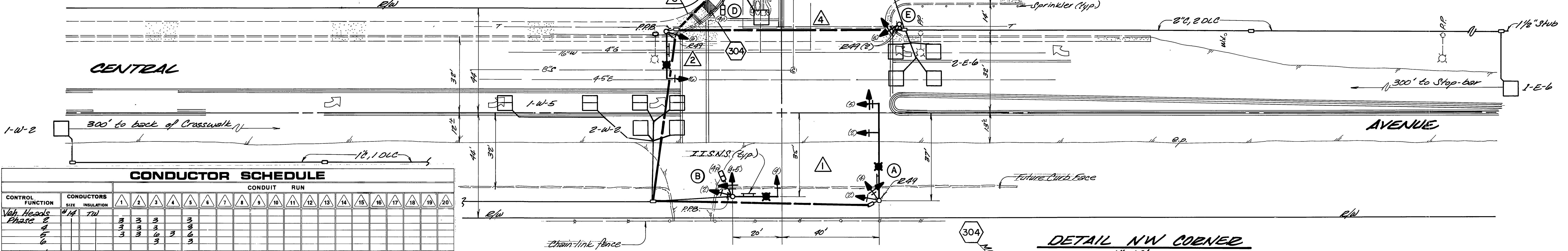
● Future Sampling
 ■ Call-Hold (Extension)
 ▲ Delay

- CONSTRUCTION NOTES:**
1. Detector loops shall be installed in the presence of the Traffic Engineer or his representative.
 2. Detector loops for Phase 5 (1-W-5) shall be 6'x5'.
 3. Spacing for presence detector loops shall be 10', 15', and 30' where applicable; Phase 4 (1-N-4) spacing is 10', 20', and 10'.
 4. Install W-1 sign on wood 4'x4' post 500 feet in advance of intersection for each direction on Central Ave.; the exact location will be determined in the field.
 5. The Contractor shall install a pull rope in the advance detection conduit run terminated with a 1/2" stub.
 6. Voids left by sign post removal shall be filled in kind to surrounding grade.
- 304 Construct modified wheelchair ramp per Std. Dwg. No. 304.



DETAIL
Location B

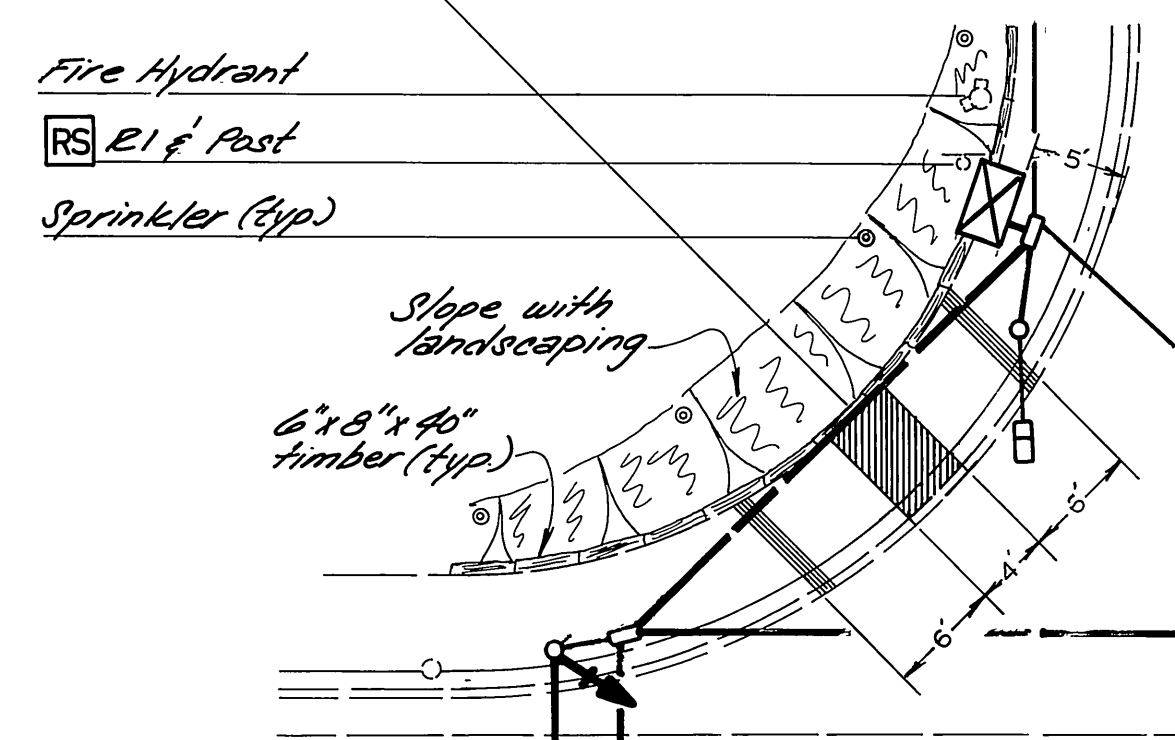
Install 1 1/2" O.D. 4" dia. 2" dia.
 SEE DETAIL BELOW FOR NW CORNER
 RS E1, Std. Name Sign
 Construct 2" Cabinet foundation and install City furnished controller assembly.



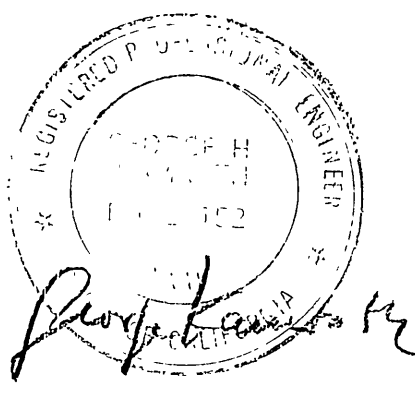
CONDUCTOR SCHEDULE

CONTROL FUNCTION	CONDUCTORS	CONDUIT RUN																			
		1	2	3	4	5	6	7	8	9	10	11	12	13	14	15	16	17	18	19	20
Veh. Heads	#14 TW	3	3	3	3	3															
Phase 4	#14 TW	3	3	3	3	3															
Phase 5	#14 TW	3	3	3	3	3															
Red Heads	#14 TW				2	2	4														
Red Push Button	#14 TW				1	2	2														
Spares	#14 TW	3	3	3	3	3															
12V Common Det. Cable	#14 PE		1	1	2																
#14	#14 PE		2	2	2	2															
#14	#14 PE		1	1	2	2															
#14	#14 PE		2	2	2	2															
J.T.S.N.S.	#10 TW	2	2	2																	
12V Common	#10 TW	2	2	2																	
Signal Service	#10 TW						2														
Totals	#14 TW	12	12	12	6	24															
#14 TW	#14 TW	2	2	2																	
#14 TW	#14 TW	1	1	2																	
#14 TW	#14 TW	2	2	2																	

DETAIL NW CORNER
1"=10'



Contractor shall restore landscaping including irrigation system if disturbed and/or damaged due to construction. Timbers retaining earth shall be cut as needed and replaced after construction of cabinet foundation.



CONTRACT TE-88-3

APPROVED BY <i>[Signature]</i> CITY TRAFFIC ENGINEER DATE 1/22/88	APPROVED BY <i>[Signature]</i> PUBLIC WORKS DIRECTOR DATE Feb. 2, 1988	CITY OF RIVERSIDE PUBLIC WORKS DEPARTMENT	TRAFFIC SIGNALS CENTRAL AND SHANNON ROAD	ACCOUNT NO. 30-576-357-02 X-495 SHEET 1 OF 1
--	---	---	--	---