

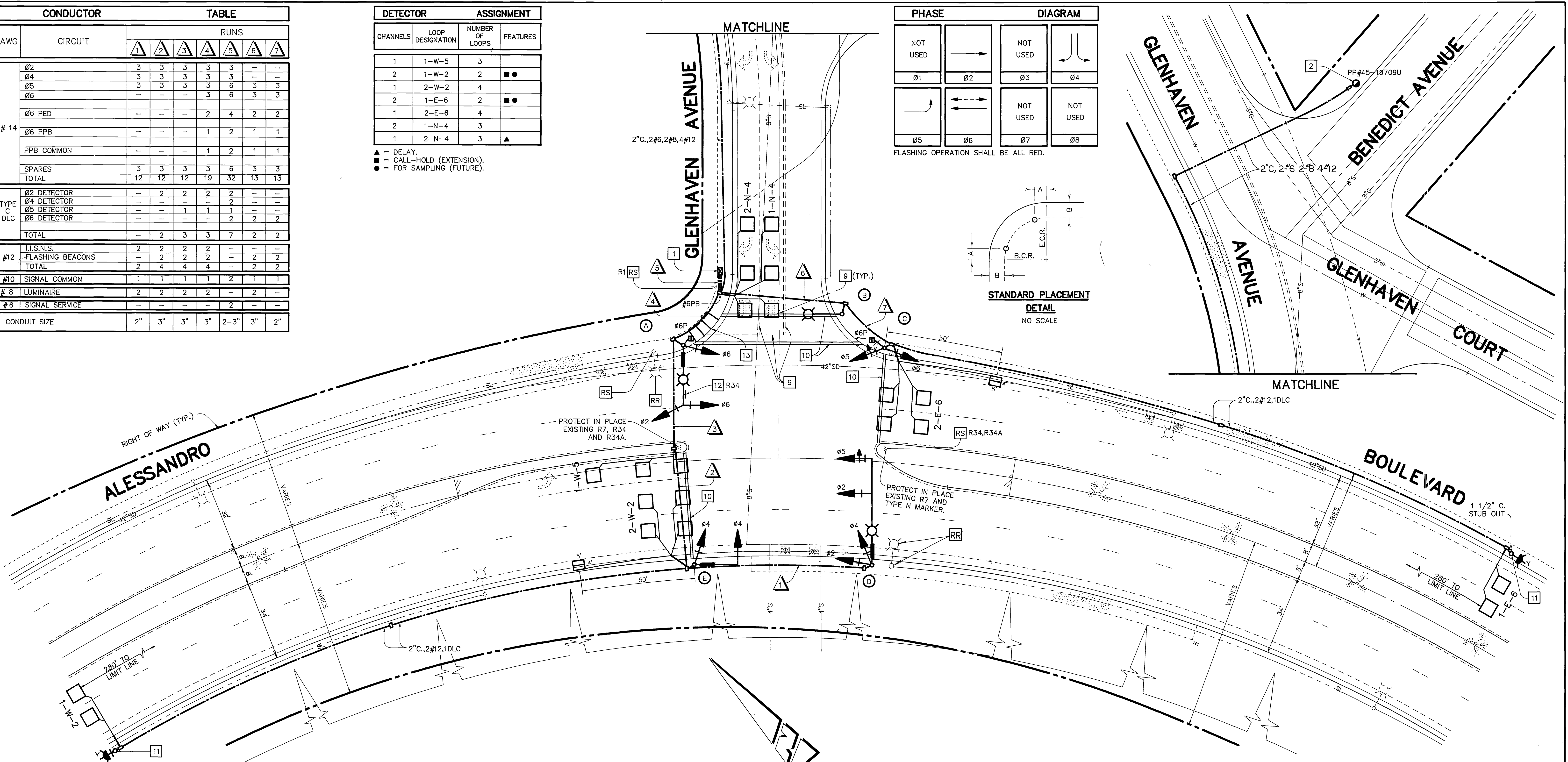
| CONDUCTOR | | TABLE | | | | | | | |
|------------------|------------------|-------|----|----|----|------|----|----|---|
| AWG | CIRCUIT | RUNS | | | | | | | |
| | | 1 | 2 | 3 | 4 | 5 | 6 | 7 | 8 |
| Ø2 | | 3 | 3 | 3 | 3 | 3 | - | - | - |
| Ø4 | | 3 | 3 | 3 | 3 | 3 | - | - | - |
| Ø5 | | 3 | 3 | 3 | 3 | 6 | 3 | 3 | |
| Ø6 | | - | - | - | 3 | 6 | 3 | 3 | |
| # 14 | Ø6 PED | - | - | - | 2 | 4 | 2 | 2 | |
| | Ø6 PPB | - | - | - | 1 | 2 | 1 | 1 | |
| | PPB COMMON | - | - | - | 1 | 2 | 1 | 1 | |
| | SPARES | 3 | 3 | 3 | 3 | 6 | 3 | 3 | |
| | TOTAL | 12 | 12 | 12 | 19 | 32 | 13 | 13 | |
| TYPE C DLC | Ø2 DETECTOR | - | 2 | 2 | 2 | 2 | - | - | |
| | Ø4 DETECTOR | - | - | - | - | 2 | - | - | |
| | Ø5 DETECTOR | - | - | 1 | 1 | 1 | - | - | |
| | Ø6 DETECTOR | - | - | - | - | 2 | 2 | 2 | |
| | TOTAL | - | 2 | 3 | 3 | 7 | 2 | 2 | |
| #12 | I.I.S.N.S. | 2 | 2 | 2 | 2 | - | - | - | |
| | FLASHING BEACONS | - | 2 | 2 | 2 | - | 2 | 2 | |
| | TOTAL | 2 | 4 | 4 | 4 | - | 2 | 2 | |
| #10 | SIGNAL COMMON | 1 | 1 | 1 | 1 | 2 | 1 | 1 | |
| # 8 | LUMINAIRE | 2 | 2 | 2 | 2 | - | 2 | - | |
| # 6 | SIGNAL SERVICE | - | - | - | - | 2 | - | - | |
| | CONDUIT SIZE | 2" | 3" | 3" | 3" | 2-3" | 3" | 2" | |

| DETECTOR | | ASSIGNMENT | |
|----------|------------------|-----------------|----------|
| CHANNELS | LOOP DESIGNATION | NUMBER OF LOOPS | FEATURES |
| 1 | 1-W-5 | 3 | |
| 2 | 1-W-2 | 2 | ● |
| 1 | 2-W-2 | 4 | |
| 2 | 1-E-6 | 2 | ● |
| 1 | 2-E-6 | 4 | |
| 2 | 1-N-4 | 3 | |
| 1 | 2-N-4 | 3 | ▲ |

▲ = DELAY.
 ● = CALL-HOLD (EXTENSION).
 ○ = FOR SAMPLING (FUTURE).

| PHASE | | DIAGRAM | |
|----------|----|----------|----------|
| NOT USED | → | NOT USED | ↑ |
| Ø1 | Ø2 | Ø3 | Ø4 |
| ← | ← | NOT USED | NOT USED |
| Ø5 | Ø6 | Ø7 | Ø8 |

FLASHING OPERATION SHALL BE ALL RED.



CONSTRUCTION NOTES (THIS SHEET):

- 1 - CONSTRUCT TYPE "P" CABINET FOUNDATION AND INSTALL CITY FURNISHED CONTROLLER ASSEMBLY.
- 2 - INSTALL 120V SIGN, 120V SIGNAL AND 240V STREET LIGHT SERVICE PER CITY OF RIVERSIDE STANDARD DRAWING NO. 612.
- 3 - ALL DETECTOR INSTALLATION SHALL BE DONE IN THE PRESENCE OF THE CITY ENGINEER OR HIS REPRESENTATIVE.
- 4 - LOOP DETECTORS SHALL BE 6' X 6' EXCEPT AS OTHERWISE NOTED.
- 5 - INTERNALLY ILLUMINATED STREET NAME SIGNS SHALL BE TYPE A.
- 6 - ALL PULL BOXES TO BE #5 UNLESS OTHERWISE NOTED.
- 7 - ALL VEHICLE HEADS TO BE 12".
- 8 - ALL SIGNS, STRIPING AND PAVEMENT MARKING REQUIREMENTS MUST BE COMPLETED AT LEAST 1 DAY PRIOR TO TURN-ON.
- 9 - REMOVE (BY SANDBLASTING) ALL CONFLICTING STRIPING AND "STOP" LEGENDS (80 S.F.).

- 10 - PAINT 12" WHITE CROSSWALK OR LIMIT LINES (±215 L.F.).
- 11 - INSTALL ADVANCE FLASHING BEACON BEACON ON TYPE 1A POLE WITH BEACON CONTROL ASSEMBLY PER STATE STANDARD ES-3C AND W41 SIGN. INCANDESCENT SIGN LIGHTING FIXTURE WILL NOT BE REQUIRED.
- 12 - INSTALL SIGN.
- 13 - CONSTRUCT MODIFIED WHEELCHAIR RAMP PER CAL TRANS STANDARD NO. NB-B, CASE C.

| POLE | | SCHEDULE | | | | | | | | | |
|------|---------|---------------|-----------|-----------|---------------|---------------------|-------------------------|---------|-----------|---------------|------------------------------------|
| No. | TYPE | STANDARD HGT. | SIG. M.A. | LUM. M.A. | LUMINAIRE HPS | I.I.S.N.S. LEGEND | SIGNAL MOUNTING VEHICLE | PED | PPB PHASE | PLACEMENT A B | REMARKS |
| A | 19-4-80 | 30' | 25' | 12' | 250W | Glenhaven Ave 5600 | MAS MAS | SV-1-T | SP-1-T | Ø6 7' 2.5' | |
| B | 68S10 | 30' | - | 12' | 250W | - | - | - | - | 15' 2.5' | RELOCATE |
| C | 1-A | 10' | - | - | - | - | - | TV-2-T | SP-1-T | Ø6 9' 2.5' | |
| D | 26-4-80 | 30' | 45' | 12' | 250W | Glenhaven Blvd 5600 | MAS MAS | SV-2-TB | - | - 2.5' | |
| E | 16-2-80 | 17' | 18' | - | - | Alessandro 700 | MAS | SV-1-T | - | - 2.5' | I.I.S.N.S. LEGEND ON ONE SIDE ONLY |

I.I.S.N.S. = INTERNALLY ILLUMINATED STREET NAME SIGN



MGA
 MOHLE, GROVER & ASSOCIATES
 901 East Imperial Highway Suite A
 La Habra, CA 90631 • (714) 738-3471

| | | | | |
|---|--|---|--|---|
| CITY OF RIVERSIDE, CALIFORNIA DEPARTMENT OF PUBLIC WORKS APPROVED BY: [Signature] DATE: 11-31-88 PRINCIPAL ENGINEER PARK DEPARTMENT | | APPROVED BY: [Signature] DATE: 11-21-88 DIRECTOR OF PUBLIC WORKS TRAFFIC DIVISION CHIEF P.W. ENGR. PUBLIC UTILITIES | | TRAFFIC SIGNAL PLAN ALESSANDRO BOULEVARD AND GLENHAVEN AVENUE ACCT. NO. 30-576-349-02 X-497 SHEET 2 OF 2 FILE NO. |
| DESIGNED BY: E. LOZZANO DRAWN BY: J.K. REYING CHECKED BY: E. LOZZANO | | HORIZ. SCALE: 1" = 20' VERT. SCALE: | | |