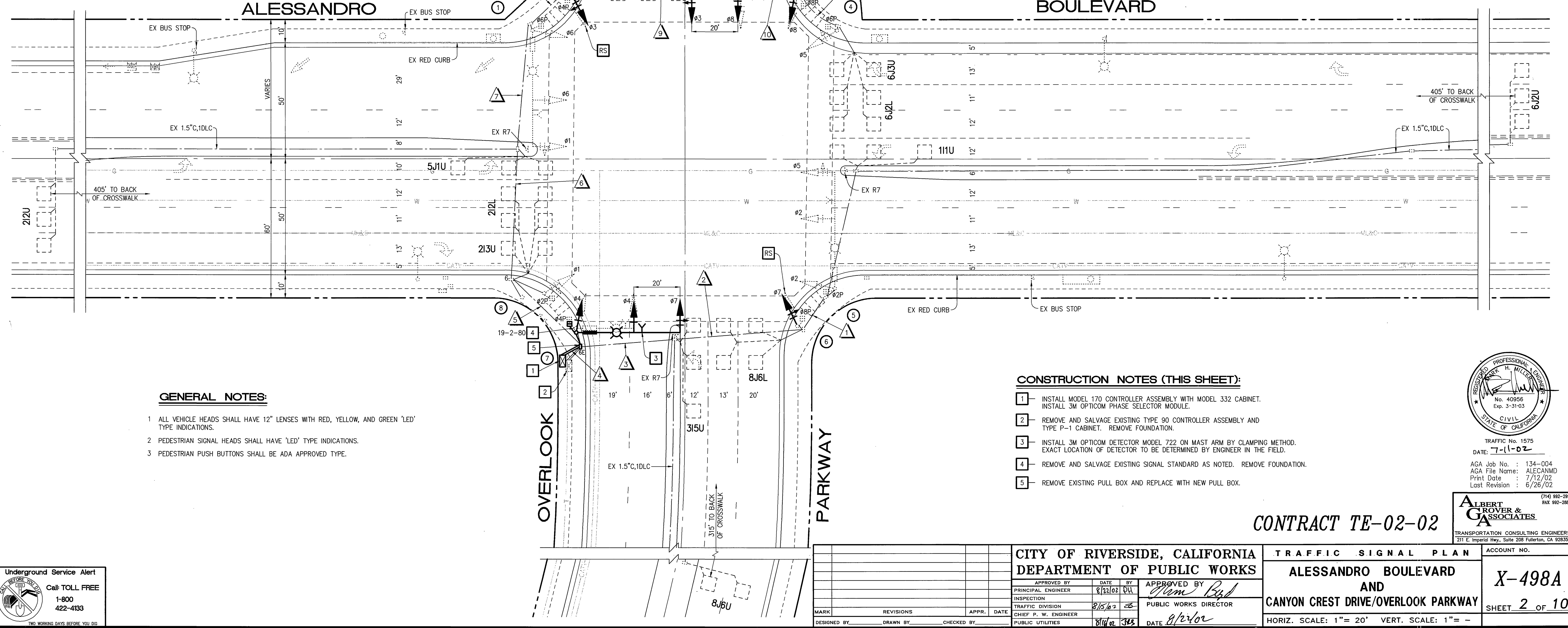
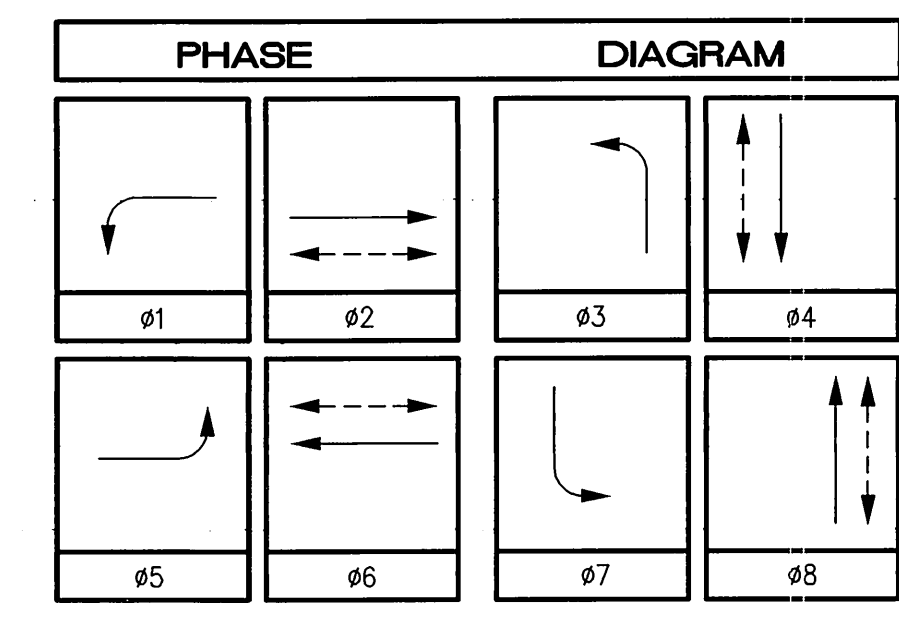


CONDUCTOR		TABLE												
AWG	CIRCUIT	RUNS												
		1	2	3	4	5	6	7	8	9	10	11		
#1		-	-	-	3	3	3	3	-	-	-	-	-	-
#2		3	3	3	3	-	-	-	-	-	-	-	-	-
#3		-	-	-	3(N)	3(N)	3(N)	3(N)	3(N)	3(N)	3(N)	-	-	-
#4		-	-	3	3	6	-	-	-	-	-	-	-	-
#5		3	3	3	6	3	3	3	3	3	3	3	3	3
#6		-	-	-	3	3	3	3	-	-	-	-	-	-
#7		-	3(N)	3(N)	6(N)	-	-	-	-	-	-	-	-	-
#8		-	-	-	3	3	3	3	3	3	3	3	3	3
#2 PED		2	2	2	4	2	-	-	-	-	-	-	-	-
#4 PED		-	-	-	4	2	2	2	2	-	-	-	-	-
#6 PED		-	-	-	2	2	2	2	2	2	2	2	2	2
#8 PED		-	2	2	4	2	2	2	2	2	2	2	2	2
#2 PPB		-	1	1	2	-	-	-	-	-	-	-	-	-
#4 PPB		-	-	-	1	1	1	1	-	-	-	-	-	-
#6 PPB		-	-	-	1	1	1	1	1	1	1	1	1	1
#8 PPB		1	1	1	2	1	1	1	1	1	1	1	1	1
PPB COMMON		1	1	1	2	1	1	1	1	1	1	1	1	1
SPARES		3	3	3	6	3	3	3	3	3	3	3	3	3
TOTAL		13	22	22	61	30	28	28	21	19	19	10		
#1 DETECTOR		-	-	-	1	1	1	1	1	1	1	1	1	1
#2 DETECTOR		-	-	-	3	3	1	-	-	-	-	-	-	-
#3 DETECTOR		-	1	1	1	-	-	-	-	-	-	-	-	-
#4 DETECTOR		-	-	-	3	3	3	3	3	-	-	-	-	-
#5 DETECTOR		-	-	-	1	1	1	-	-	-	-	-	-	-
#6 DETECTOR		-	-	-	3	3	3	3	3	3	3	3	3	3
#7 DETECTOR		-	-	-	1	1	1	1	1	1	1	1	1	1
#8 DETECTOR		-	3	3	3	-	-	-	-	-	-	-	-	-
TOTAL		-	4	4	16	12	10	8	8	5	5	4		
#10 LUMINAIRE		2	2	2	-	2	2	2	2	2	2	2	2	2
SIGNAL COMMON		1	1	1	2	1	1	1	1	1	1	1	1	1
TOTAL		3	3	3	2	3	3	3	3	3	3	3	3	3
#12 IISNS		2	2	2	-	2	2	2	2	2	2	2	2	2
#8 SIGNAL SERVICE		-	-	-	2	2	-	-	-	-	-	-	-	-
#20/4 EVPE		1	1	1	3(N)	1(N)	1(N)	1(N)	1(N)	1(N)	1(N)	1(N)	-	-
CONDUIT SIZE		2"	3"	3"	2-3"(N)	3"	3"	3"	3"	3"	3"	3"	2"	

ALL CONDUIT AND CONDUCTORS ARE EXISTING UNLESS OTHERWISE INDICATED AS (N) NEW.

POLE										SCHEDULE				
No.	TYPE	STANDARD			LUMINAIRE HPS	IISNS LEGEND	SIGNAL MOUNTING			PPB PHASE	REMARKS			
		HGT.	SIG. M.A.	LUM. M.A.			VEHICLE	PED	AUDIBLE					
1	29-5-80	30'	50'	15'	250W	Canyon Crest Dr 6800	MAS	MAS	SV-1-T	SP-1-T	((P)) (N)	#4	EX. EVPE DETECTOR	
2	1-A	10'	-	-	-	-	-	-	TV-1-T(N)	SP-1-T	((C)) (N)	#6		
3	26-4-80(N)	30'	45'(N)	15'(N)	250W(R)	Alessandro Blvd 6900(R)	MAS(N)	MAS(R)	SV-1-T(R)	SP-1-T(R)	((C)) (N)	#6(N)	EVPE DETECTOR (N)	
4	1-A	10'	-	-	-	-	-	-	TV-1-T	SP-1-T	((P)) (N)	#8		
5	29-5-80	30'	50'	15'	250W	Overlook Pkwy 200	MAS	MAS	SV-1-T	SP-1-T	((P)) (N)	#8	EX. EVPE DETECTOR	
6	1-A	10'	-	-	-	-	-	-	TV-1-T(N)	SP-1-T	((C)) (N)	#2		
7	26-4-80(N)	30'	45'(N)	15'(N)	250W(R)	Alessandro Blvd 6900(R)	MAS(N)	MAS(R)	SV-1-T(R)	SP-1-T(R)	((C)) (N)	#2(N)	EVPE DETECTOR (R)	
8	1-A	10'	-	-	-	-	-	-	TV-1-T	SP-1-T	((P)) (N)	#4		

ALL EQUIPMENT IS EXISTING UNLESS OTHERWISE INDICATED AS (N) NEW, OR (R) RELOCATE.
((C)) OR ((P)) - INDICATES AUDITORY PEDESTRIAN SIGNAL TO BE INSTALLED; ((C)) INDICATES CUCKOO SOUND; ((P)) INDICATES PEEP-PEEP SOUND.



GENERAL NOTES:

- ALL VEHICLE HEADS SHALL HAVE 12" LENSES WITH RED, YELLOW, AND GREEN 'LED' TYPE INDICATIONS.
- PEDESTRIAN SIGNAL HEADS SHALL HAVE 'LED' TYPE INDICATIONS.
- PEDESTRIAN PUSH BUTTONS SHALL BE ADA APPROVED TYPE.

CONSTRUCTION NOTES (THIS SHEET):

- INSTALL MODEL 170 CONTROLLER ASSEMBLY WITH MODEL 332 CABINET. INSTALL 3M OPTICOM PHASE SELECTOR MODULE.
- REMOVE AND SALVAGE EXISTING TYPE 90 CONTROLLER ASSEMBLY AND TYPE P-1 CABINET. REMOVE FOUNDATION.
- INSTALL 3M OPTICOM DETECTOR MODEL 722 ON MAST ARM BY CLAMPING METHOD. EXACT LOCATION OF DETECTOR TO BE DETERMINED BY ENGINEER IN THE FIELD.
- REMOVE AND SALVAGE EXISTING SIGNAL STANDARD AS NOTED. REMOVE FOUNDATION.
- REMOVE EXISTING PULL BOX AND REPLACE WITH NEW PULL BOX.



TRAFFIC No. 1575
DATE: 7-1-02
AGA Job No. : 134-004
AGA File Name: ALECANMD
Print Date : 7/12/02
Last Revision : 6/26/02

CONTRACT TE-02-02



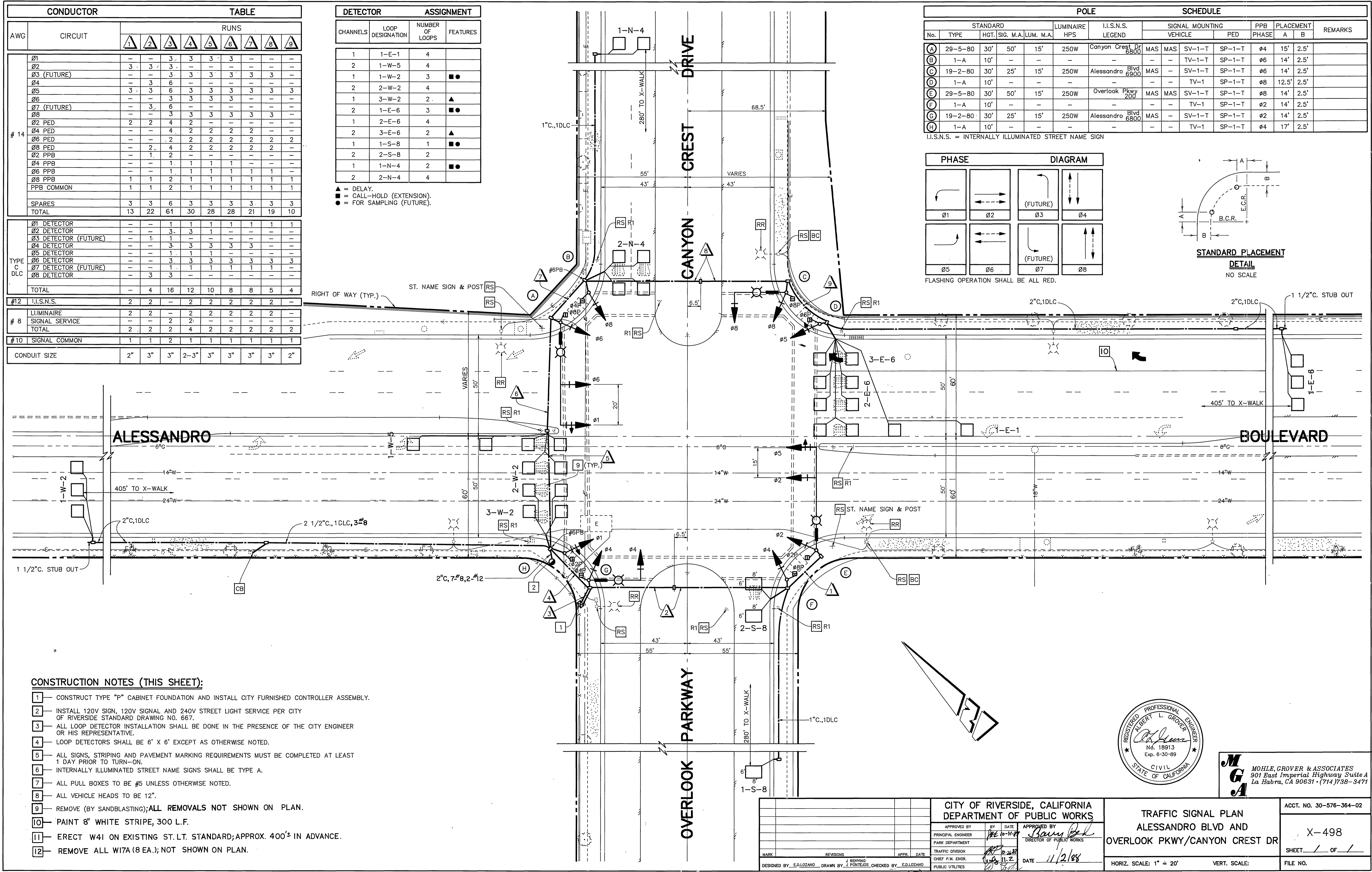
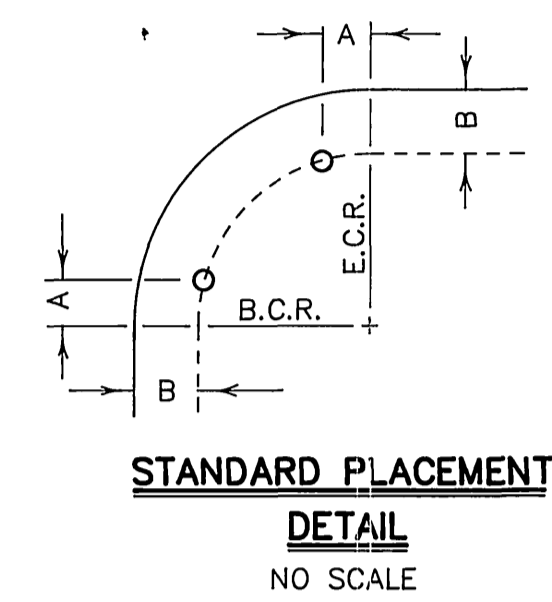
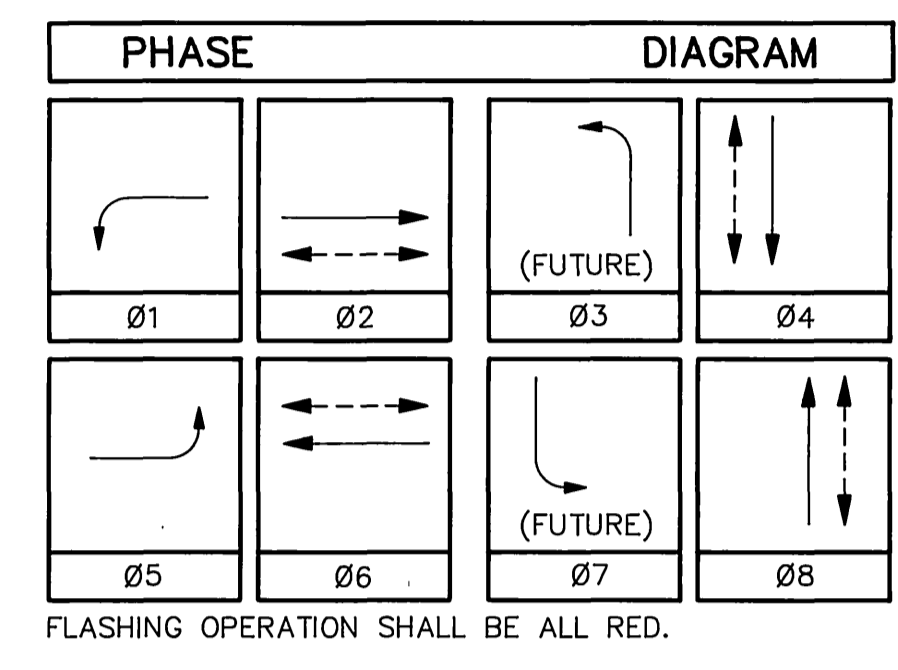
CITY OF RIVERSIDE, CALIFORNIA DEPARTMENT OF PUBLIC WORKS				TRAFFIC SIGNAL PLAN		ACCOUNT NO.
APPROVED BY	DATE	BY	APPROVED BY	ALESSANDRO BOULEVARD AND CANYON CREST DRIVE/OVERLOOK PARKWAY		
PRINCIPAL ENGINEER	8/22/02	DV	<i>Tom Red</i>	X-498A		
INSPECTION			PUBLIC WORKS DIRECTOR	SHEET 2 OF 10		
TRAFFIC DIVISION	8/15/02	CB		HORIZ. SCALE: 1" = 20' VERT. SCALE: 1" = -		
CHIEF P. W. ENGINEER						
PUBLIC UTILITIES	8/14/02	CB	DATE 8/21/02			
DESIGNED BY	DRAWN BY	CHECKED BY				

CONDUCTOR		TABLE								
AWG	CIRCUIT	RUNS								
		1	2	3	4	5	6	7	8	9
# 14	Ø1	-	-	3	3	3	3	-	-	-
	Ø2	3	3	3	-	-	-	-	-	-
	Ø3 (FUTURE)	-	-	3	3	3	3	3	3	-
	Ø4	-	3	6	-	-	-	-	-	-
	Ø5	3	3	6	3	3	3	3	3	3
	Ø6	-	-	3	3	3	3	-	-	-
	Ø7 (FUTURE)	-	3	6	-	-	-	-	-	-
	Ø8	-	-	3	3	3	3	3	3	-
	Ø2 PED	2	2	4	2	-	-	-	-	-
	Ø4 PED	-	-	4	2	2	2	2	2	-
	Ø6 PED	-	-	2	2	2	2	2	2	2
	Ø8 PED	-	-	4	2	2	2	2	2	-
	Ø2 PPB	-	1	2	-	-	-	-	-	-
	Ø4 PPB	-	-	1	1	1	1	-	-	-
Ø6 PPB	-	-	1	1	1	1	1	1	-	
Ø8 PPB	1	1	2	1	1	1	1	1	1	
PPB COMMON	1	1	2	1	1	1	1	1	1	
SPARES	3	3	6	3	3	3	3	3	3	
TOTAL	13	22	61	30	28	28	21	19	10	
TYPE C DLC	Ø1 DETECTOR	-	-	1	1	1	1	1	1	1
	Ø2 DETECTOR	-	-	3	3	1	-	-	-	-
	Ø3 DETECTOR (FUTURE)	-	1	1	-	-	-	-	-	-
	Ø4 DETECTOR	-	-	3	3	3	3	3	-	-
	Ø5 DETECTOR	-	-	1	1	1	-	-	-	-
	Ø6 DETECTOR	-	-	3	3	3	3	3	3	3
	Ø7 DETECTOR (FUTURE)	-	-	1	1	1	1	1	-	-
	Ø8 DETECTOR	-	-	3	3	-	-	-	-	-
TOTAL	-	4	16	12	10	8	8	5	4	
#12	I.I.S.N.S.	2	2	-	2	2	2	2	-	
# 8	LUMINAIRE	2	2	-	2	2	2	2	-	
	SIGNAL SERVICE	-	-	2	2	-	-	-	-	
TOTAL	2	2	2	4	2	2	2	2	2	
#10	SIGNAL COMMON	1	1	2	1	1	1	1	1	
CONDUIT SIZE		2"	3"	3"	2-3"	3"	3"	3"	2"	

DETECTOR		ASSIGNMENT	
CHANNELS	LOOP DESIGNATION	NUMBER OF LOOPS	FEATURES
1	1-E-1	4	
2	1-W-5	4	
1	1-W-2	3	■●
2	2-W-2	4	
1	3-W-2	2	▲
2	1-E-6	3	■●
1	2-E-6	4	
2	3-E-6	2	▲
1	1-S-8	1	■●
2	2-S-8	2	
1	1-N-4	2	■●
2	2-N-4	4	

▲ = DELAY.
 ■ = CALL-HOLD (EXTENSION).
 ● = FOR SAMPLING (FUTURE).

		STANDARD				POLE		SCHEDULE				REMARKS	
No.	TYPE	HGT.	SIG. M.A.	LUM. M.A.	LUMINAIRE HPS	I.I.S.N.S. LEGEND	SIGNAL MOUNTING		PHASE	PPB	PLACEMENT		
		VEHICLE		PED		PHASE		A	B				
(A)	29-5-80	30'	50'	15'	250W	Canyon Crest Dr 6800	MAS	MAS	SV-1-T	SP-1-T	Ø4	15'	2.5'
(B)	1-A	10'	-	-	-	-	-	-	TV-1-T	SP-1-T	Ø6	14'	2.5'
(C)	19-2-80	30'	25'	15'	250W	Alessandro Blvd 6900	MAS	-	SV-1-T	SP-1-T	Ø6	14'	2.5'
(D)	1-A	10'	-	-	-	-	-	-	TV-1	SP-1-T	Ø8	12.5'	2.5'
(E)	29-5-80	30'	50'	15'	250W	Overlook Pkwy 200	MAS	MAS	SV-1-T	SP-1-T	Ø8	14'	2.5'
(F)	1-A	10'	-	-	-	-	-	-	TV-1	SP-1-T	Ø2	14'	2.5'
(G)	19-2-80	30'	25'	15'	250W	Alessandro Blvd 6800	MAS	-	SV-1-T	SP-1-T	Ø2	14'	2.5'
(H)	1-A	10'	-	-	-	-	-	-	TV-1	SP-1-T	Ø4	17'	2.5'



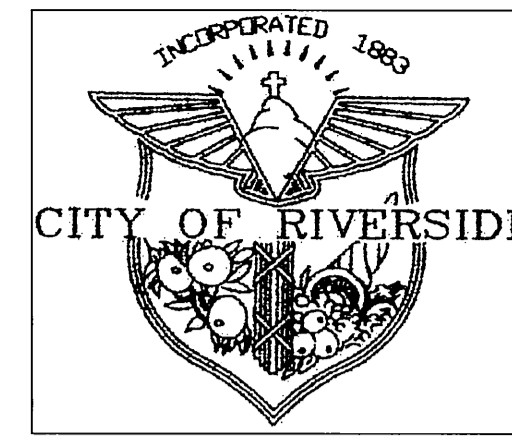
- CONSTRUCTION NOTES (THIS SHEET):**
- CONSTRUCT TYPE "P" CABINET FOUNDATION AND INSTALL CITY FURNISHED CONTROLLER ASSEMBLY.
 - INSTALL 120V SIGN, 120V SIGNAL AND 240V STREET LIGHT SERVICE PER CITY OF RIVERSIDE STANDARD DRAWING NO. 667.
 - ALL LOOP DETECTOR INSTALLATION SHALL BE DONE IN THE PRESENCE OF THE CITY ENGINEER OR HIS REPRESENTATIVE.
 - LOOP DETECTORS SHALL BE 6' X 6' EXCEPT AS OTHERWISE NOTED.
 - ALL SIGNS, STRIPING AND PAVEMENT MARKING REQUIREMENTS MUST BE COMPLETED AT LEAST 1 DAY PRIOR TO TURN-ON.
 - INTERNALLY ILLUMINATED STREET NAME SIGNS SHALL BE TYPE A.
 - ALL PULL BOXES TO BE #5 UNLESS OTHERWISE NOTED.
 - ALL VEHICLE HEADS TO BE 12".
 - REMOVE (BY SANDBLASTING); ALL REMOVALS NOT SHOWN ON PLAN.
 - PAINT 8" WHITE STRIPE, 300 L.F.
 - ERECT W41 ON EXISTING ST. LT. STANDARD; APPROX. 400' IN ADVANCE.
 - REMOVE ALL W17A (8 EA.); NOT SHOWN ON PLAN.



M G A
 MOHLE, GROVER & ASSOCIATES
 901 East Imperial Highway Suite A
 La Habra, CA 90631 • (714) 738-3471

CITY OF RIVERSIDE, CALIFORNIA DEPARTMENT OF PUBLIC WORKS		TRAFFIC SIGNAL PLAN ALESSANDRO BLVD AND OVERLOOK PKWY/CANYON CREST DR		ACCT. NO. 30-576-364-02
APPROVED BY	DATE	APPROVED BY	DATE	X-498
PRINCIPAL ENGINEER	11/2/88	DIRECTOR OF PUBLIC WORKS	11/2/88	
MARK	REVISIONS	APPR. DATE	DATE	SHEET / OF /
DESIGNED BY E. LOZANO	DRAWN BY J. PONTEJO	CHECKED BY E. LOZANO	DATE 11/2/88	
HORIZ. SCALE: 1" = 20'		VERT. SCALE:		FILE NO.

RIVERSIDE



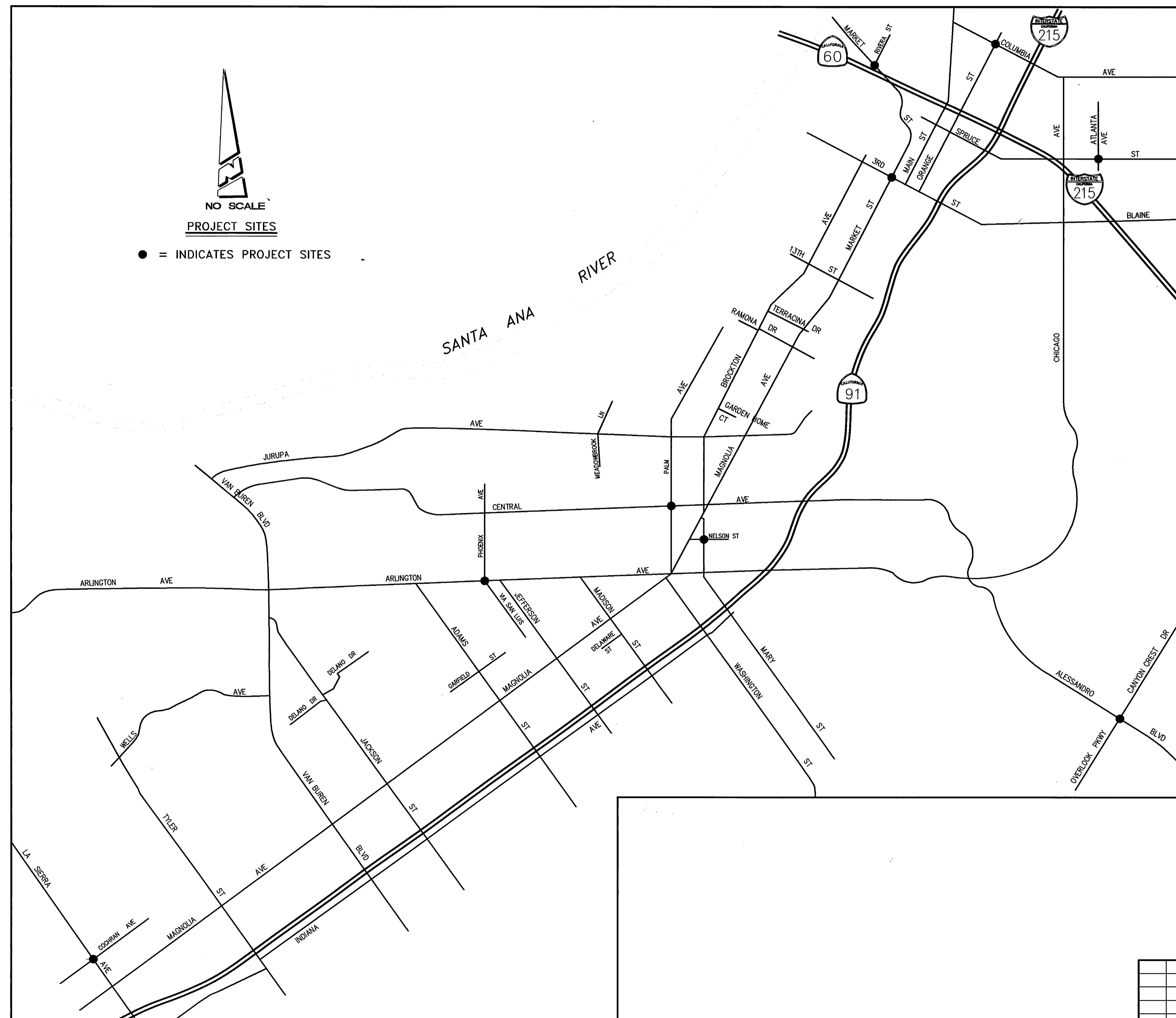
CALIFORNIA

PUBLIC WORKS DEPARTMENT TRAFFIC ENGINEERING DIVISION

CONTRACT TE-02-02

INDEX OF SHEETS

DRAWING NO.	LOCATION	SHEET
-	COVER SHEET	1
X-498A	ALESSANDRO BLVD AND CANYON CREST DR	2
X-439A	ARLINGTON AVE AND PHOENIX AVE	3
X-219A	CENTRAL AVE AND PALM AVE	4
X-458A	COLUMBIA AVE AND ORANGE ST	5
X-152A	MARKET ST AND THIRD ST	6
X-457A	LA SIERRA AVE AND COCHRAN ST	7
X-135	BROCKTON AVE AND NELSON ST	8
X-114	MARKET ST AND RIVERA ST	9
X-260	SPRUCE ST AND ATLANTA AVE	10



NO SCALE
PROJECT SITES
● = INDICATES PROJECT SITES



TRAFFIC No. 1575
DATE: 7-12-02
AGA Job No. : 134-004
AGA File Name: RIV9-TS1
Print Date : 7/12/02
Last Revision : 6/28/02

ALBERT GROVER & ASSOCIATES
TRANSPORTATION CONSULTING ENGINEERS
211 E. Imperial Hwy., Suite 208 Fullerton, CA 92835

CITY OF RIVERSIDE, CALIFORNIA DEPARTMENT OF PUBLIC WORKS				TRAFFIC SIGNAL PLANS		ACCOUNT NO.
APPROVED BY	DATE	BY	APPROVED BY	<div style="text-align: center;"> <h3>TITLE SHEET</h3> </div>		
PRINCIPAL ENGINEER	8/12/02	DA	<i>Sam Bag</i>			
INSPECTION						
TRAFFIC DIVISION	8/15/02	TS	PUBLIC WORKS DIRECTOR			
MARK	REVISIONS	APPR. DATE	CHIEF P. W. ENGINEER	SHEET 1 OF 10		
DESIGNED BY	DRAWN BY	CHECKED BY	PUBLIC UTILITIES	HORIZ. SCALE: 1" = - VERT. SCALE: 1" = -		