

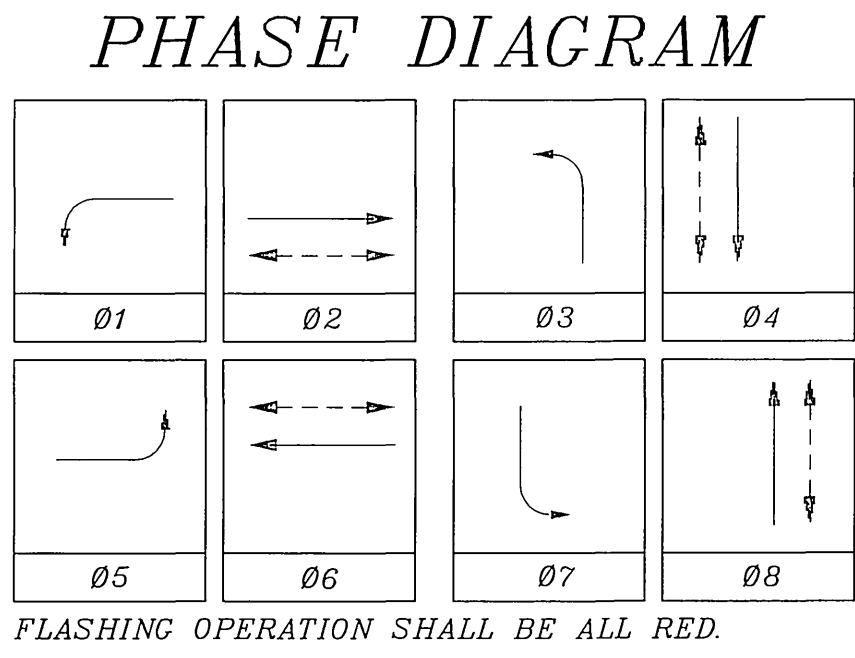
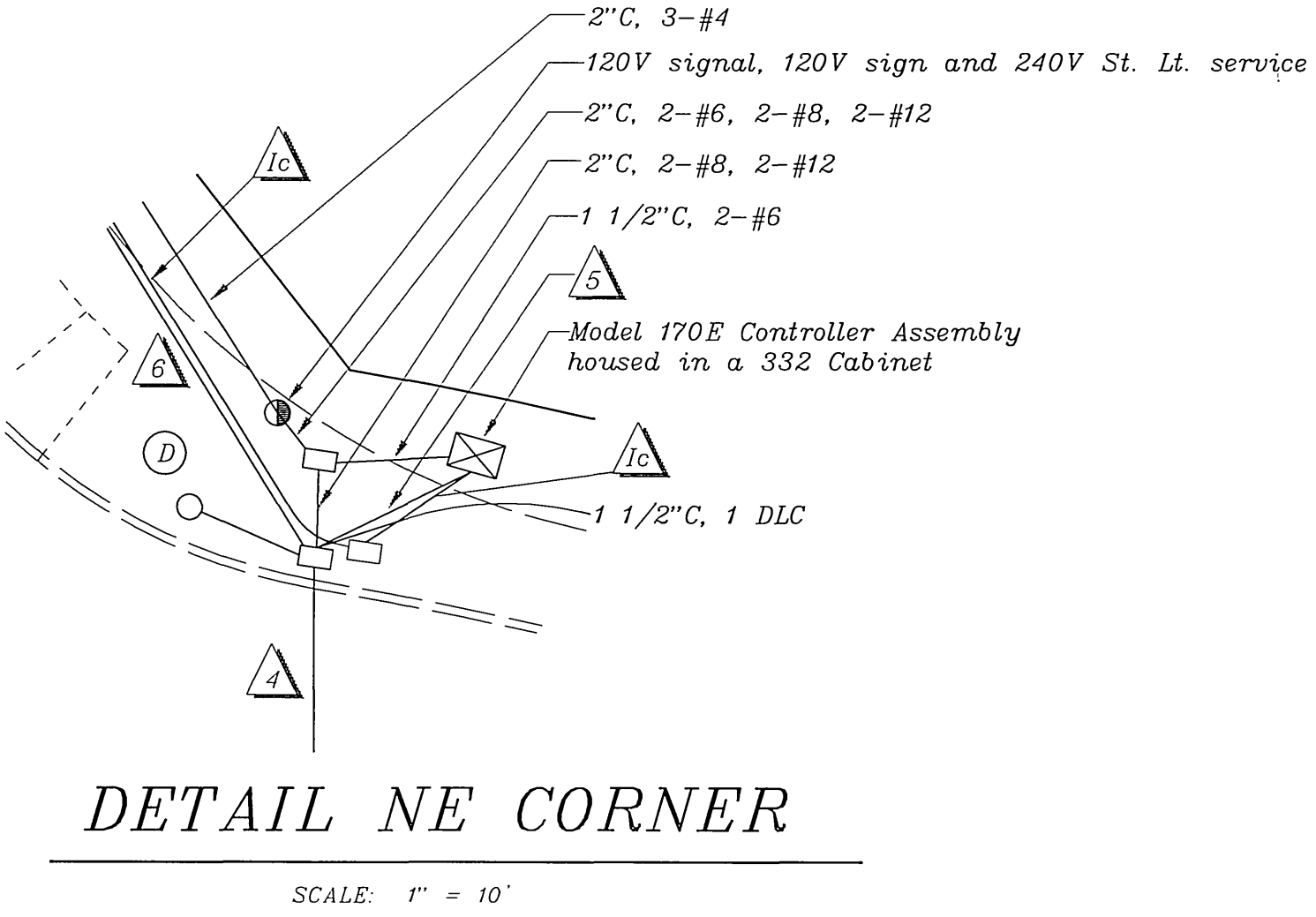
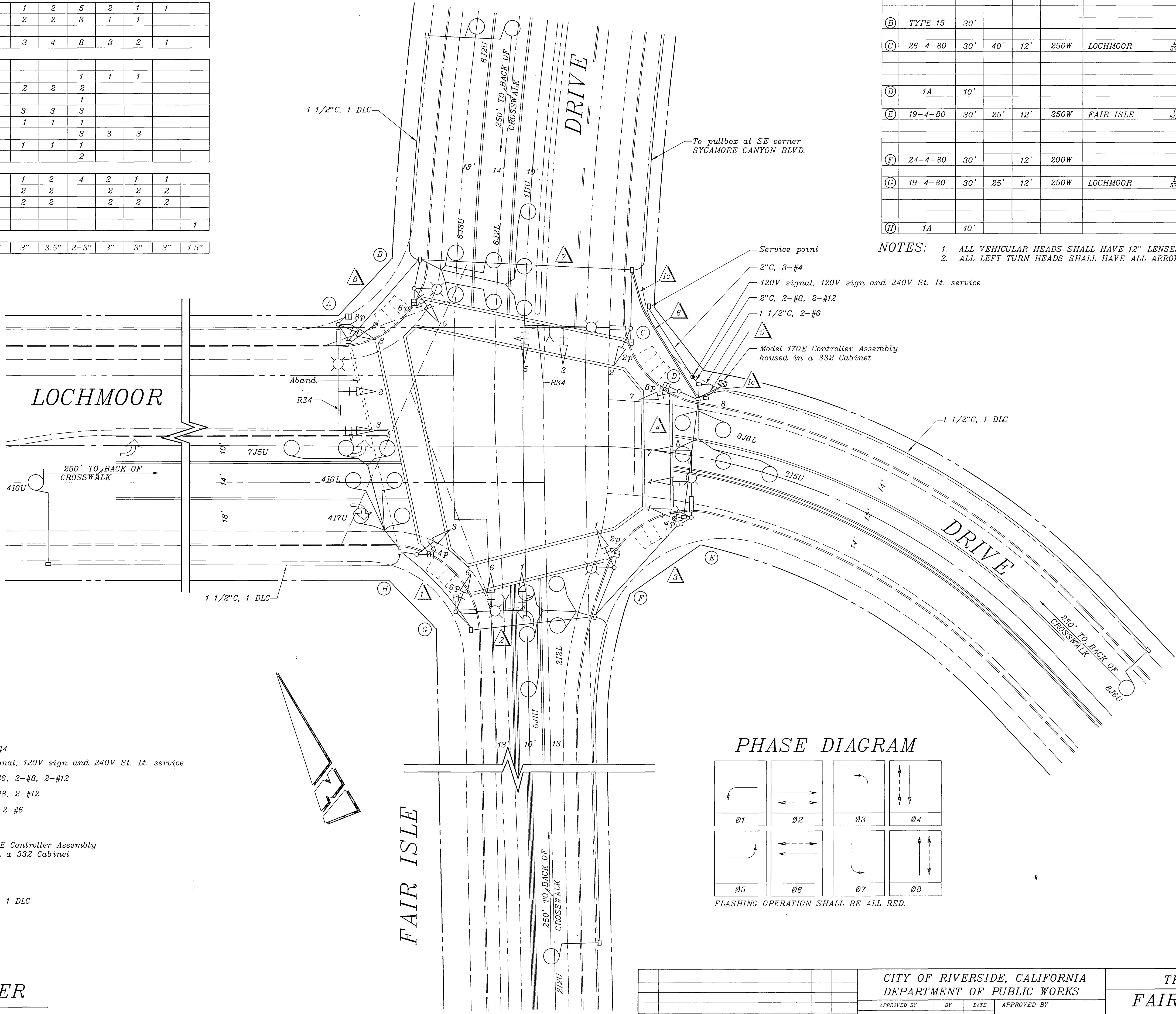
CONDUCTOR TABLE

CONTROL FUNCTION	CONDUCTORS	CONDUCTOR RUNS									
		1	2	3	4	5	6	7	8	1c	
VEHICLE & PEDESTRIAN HEADS, PEDESTRIAN PUSH BUTTONS, SPARES & COMMONS	12 WIRE IMSA		1	1	2	5	2	1	1		
	9 WIRE IMSA	1	1	2	2	3	1	1			
	5 WIRE IMSA										
	3 WIRE IMSA	1	2	3	4	8	3	2	1		
DETECTOR CABLE	#16/2										
PHASE 1						1	1	1			
PHASE 2				2	2	2					
PHASE 3						1					
PHASE 4		3	3	3	3	3					
PHASE 5				1	1	1					
PHASE 6						3	3	3			
PHASE 7		1	1	1	1	1					
PHASE 8						2					
VEHICLE PRE-EMPT	#20		1	1	2	4	2	1	1		
I.I.S.N.S.	#12		2	2	2		2	2	2		
LUMINAIRES	#8		2	2	2		2	2	2		
SIGNAL SERVICE	#6										
INTERCONNECT	#19										1
CONDUIT SIZE		3"	3"	3"	3.5"	2-3"	3"	3"	3"	1.5"	

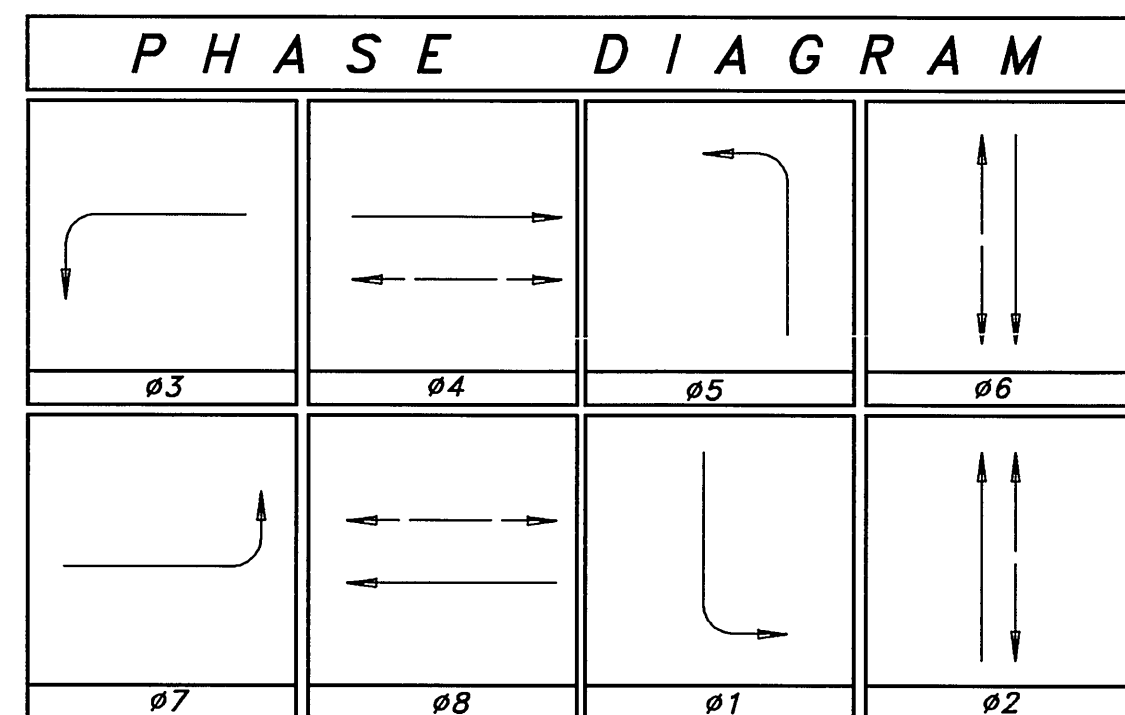
EQUIPMENT SCHEDULE

SIGNAL STANDARD				LUMINAIRE		I.I.S.N.S.		SIGNAL MOUNTINGS			PPB
NO.	TYPE	H'GHT	M.A.	L.A.	H.P.S.V.	LEGEND		VEHICLE	PEDESTRIAN	AUDIBLE	PHASE
(A)	26-4-80	30'	40'	12'	250W	FAIR ISLE	DR 500E	MAS			
								MAS			
								SV-1-T	SP-1-T	((C))	6
(B)	TYPE 15	30'						SV-1-T	SP-1-T	((P))	8
(C)	26-4-80	30'	40'	12'	250W	LOCHMOOR	DR 5700	MAS			
								MAS			
								SV-1-T	SP-1-T	((P))	8
(D)	1A	10'						TV-2-T	SP-1-T	((C))	2
(E)	19-4-80	30'	25'	12'	250W	FAIR ISLE	DR 500E	MAS			
								MAS			
								SV-1-T	SP-1-T	((C))	2
(F)	24-4-80	30'		12'	200W			SV-1-T	SP-1-T	((P))	4
(G)	19-4-80	30'	25'	12'	250W	LOCHMOOR	DR 5700	MAS			
								MAS			
								SV-1-T	SP-1-T	((P))	4
(H)	1A	10'						TV-1-T	SP-1-T	((C))	6

NOTES: 1. ALL VEHICULAR HEADS SHALL HAVE 12" LENSES.
2. ALL LEFT TURN HEADS SHALL HAVE ALL ARROWS.



CITY OF RIVERSIDE, CALIFORNIA DEPARTMENT OF PUBLIC WORKS				TRAFFIC SIGNAL FAIR ISLE DRIVE @ LOCHMOOR DRIVE		ACCT. NO. X-502
DESIGNED BY	WEBB	DRAWN BY	WEBB	CHECKED BY		SHEET 1 OF 1
AS-BUILT PER SIGNALIZATION	MAC 11/00	REVISIONS	APPR	DATE		FILE NAME: X502AS.DWG
ENGINEERING MANAGER		BY		DATE		
PRINCIPAL ENGINEER		BY		DATE		
P.W. INSPECTION		BY		DATE		
TRAFFIC DIVISION		BY		DATE		
PUBLIC UTILITIES		BY		DATE		



FLASHING INDICATION: ALL RED
NOTE: SERVICE WILL BE PROVIDED BY THE CITY OF RIVERSIDE
PUBLIC UTILITIES DEPARTMENT. CONTACT DAVE BRIDE AT
782-5866 FOR LOCATION.

LOCHMOOR

DRIVE

FAIR ISLE

DRIVE

INTERCEPT PULLBOX AT SE CORNER
SYCAMORE CANYON BLVD. AND RUN
INTERCONNECT CABLE TO CONTROLLER.

INSTALL 120V SIGNAL, 120V SIGN & 240V ST. LT.
IN TYPE III-AF SERVICE EQUIPMENT ENCLOSURE

INSTALL MODEL 170E CONTROLLER
ASSEMBLY HOUSED IN A 332 CABINET

SEE DETAIL "A"

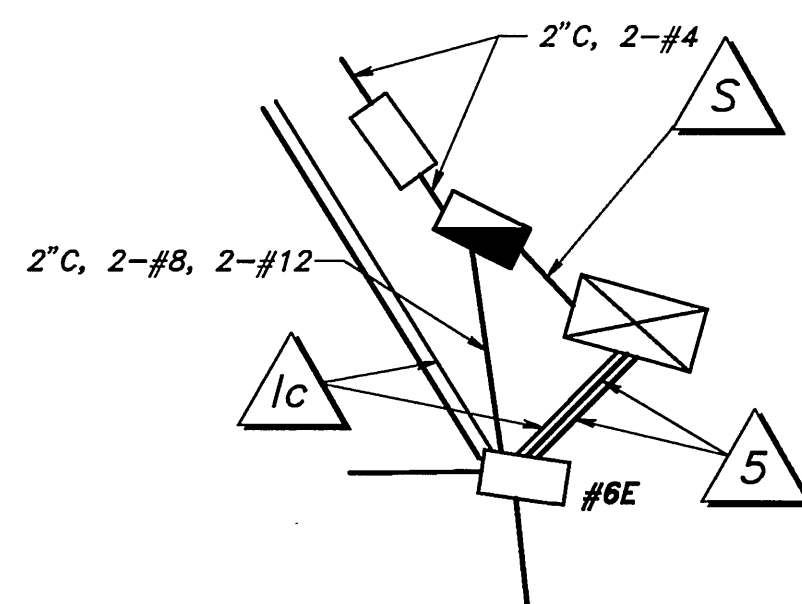
INSTALL R34

INSTALL R34

1 1/2" C, 1 DLC

1 1/2" C, 1 DLC

SCALE: 1" = 20'



DETAIL "A"
NOT TO SCALE

GENERAL NOTES

- THIS PLAN ACCURATE FOR TRAFFIC SIGNAL WORK ONLY.
- SEE PLAN R-3528 FOR STREET IMPROVEMENTS.
- A "STREET OPENING" PERMIT ISSUED BY THE CITY OF RIVERSIDE
PUBLIC WORKS DEPARTMENT IS REQUIRED FOR THE WORK HEREON;
INSPECTION SHALL BE AT THE RATE OF \$38.50 PER HOUR.
- CALL (909) 351-6096 AT LEAST 48 HOURS IN ADVANCE FOR INSPECTION.
- CALL UNDERGROUND SERVICE ALERT (U.S.A.) 1-800-227-2600 AT LEAST 2
WORKING DAYS PRIOR TO EXCAVATION.
- THE PRIVATE ENGINEER SIGNING THE PLANS IS RESPONSIBLE FOR ASSURING
THE ACCURACY AND ACCEPTABILITY OF THE WORK HEREON. IN THE EVENT
OF DISCREPANCIES ARISING DURING CONSTRUCTION THE PRIVATE ENGINEER
SHALL BE RESPONSIBLE FOR DETERMINING AN ACCEPTABLE SOLUTION AND
REVISING THE PLANS FOR APPROVAL BY THE CITY.
- SEE PLAN XL-429 FOR STRIPING AND SIGNING.

CONDUCTOR TABLE												
CONTROL FUNCTION	CONDUCTORS		CONDUIT RUNS									
	I.M.S.A./ SIZE	INSULATION	1	2	3	4	5	6	7	8	9	10
VEHICLE AND PEDESTRIAN HEADS, PEDESTRIAN PUSH BUTTONS, SPARES AND COMMONS	12 9 5 3	P.E. P.E. P.E. P.E.	1 1 1 1	1 1 1 1	1 1 1 1	2 2 2 2	5 3 3 3	2 1 1 1	1 1 1 1	1 1 1 1	1 1 1 1	1 1 1 1
DETECTOR CABLE	TYPE B	P.E.					1	1	1			
PHASE 1						2	2	2				
PHASE 2						1						
PHASE 3						3	3	3	3			
PHASE 4						1	1	1				
PHASE 5						3	3	3	3			
PHASE 6						1	1	1	1			
PHASE 7						2						
PHASE 8												
TOTALS	TYPE B	P.E.	4	4	7	7	14	4	4			
PRE-EMPTION CABLE	4#20			1	1	2	4	2	1	1		
INTERCONNECT CABLE	6 PAIR #19											
I.I.S.N.S.	#12	T.W.		2	2	2		2	2	2		
LUMINARIES	#8	T.H.W.		2	2	2		2	2	2		
SIGNAL SERVICE	#6	T.W.									2	
CONDUIT SIZE			3"	3"	3"	3.5"	2-3"	3"	3"	3"	1.5"	1.5"
			(N)	(E)	(N)	(N)	(N)	(E)	(E)	(N)	(N)	(N)

SEE CONTRACT SPECIAL PROVISIONS FOR ADDITIONAL INFORMATION ON I.M.S.A.
SYSTEM SHALL HAVE ALL NEW CONDUCTORS AND CABLES.
(E) = EXISTING CONDUIT
(N) = NEW CONDUIT

POLE SCHEDULE										
STANDARD	NO.	TYPE	HGT.	SIG.	M.A.	LUM.	M.A.	LUM.	HPSV	I.I.S.N.S.
(A) 26-4-80	30'	40'	12'	250W	FAIR ISLE	1W3C	MAS(2)	SV-1-T	SP-1-T	6
(B) 15(E)	10'					1W3C	SV-1-T	SP-1-T	8	INSTALL NEW EQUIPMENT ON EXIST. POLE
(C) 26-4-80	30'	40'	12'	250W	LOCHMOOR	1W3C	MAS(2)	SV-1-T	SP-1-T	8
(D) 1A	10'					2W3C	TV-2-T	SP-1-T	2	
(E) 19-4-80	30'	25'	12'	250W	FAIR ISLE	1W3C	MAS(2)	SV-1-T	SP-1-T	2
(F) 24-4-80(E)	10'					1W3C	SV-1-T	SP-1-T	4	INSTALL NEW EQUIPMENT ON EXIST. POLE
(G) 19-4-80	30'	25'	12'	250W	LOCHMOOR	1W3C	MAS(2)	SV-1-T	SP-1-T	4
(H) 1A	10'					1W3C	TV-1-T	SP-1-T	6	

(E) = EXISTING

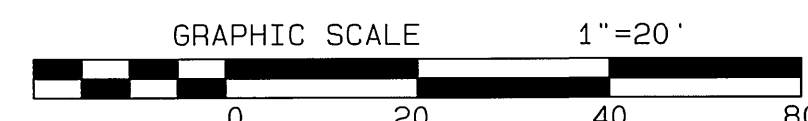
- ALL VEHICULAR HEADS SHALL HAVE 12" LENSES.
- 1A POLES SHALL BE ALUMINUM.
- LUMINARIE SHALL BE HIGH PRESSURE SODIUM VAPOR.
- PEDESTRIAN PUSH BUTTONS (PPB) SHALL BE INSTALLED ON THE POLE IN THE
QUADRANT NEAREST THE CROSSWALK SERVED.
- LOCATION OF THE EMERGENCY PRE-EMPTION DETECTOR SHALL BE AS
DETERMINED IN THE FIELD BY THE MANUFACTURER'S REPRESENTATIVE.
- INSTALL TRAFFIC SIGNAL EMERGENCY PRE-EMPTION DETECTOR.

CONSTRUCTION NOTES

- TRAFFIC SIGNAL WORK SHALL CONFORM TO THE PROVISIONS OF
SECTION 86 OF THE MOST CURRENT STANDARD SPECIFICATIONS,
THE STANDARD PLANS; BOTH PUBLISHED BY CALTRANS, APPLICABLE
CITY OF RIVERSIDE STANDARD DRAWINGS, AND THE CONTRACT SPECIAL
PROVISIONS.
- DETECTOR LOOPS SHALL BE 6" DIA. WITH 10' AND 15' SPACING.
- DETECTOR LOOP INSTALLATION SHALL BE PERFORMED IN THE PRESENCE
OF THE CITY TRAFFIC ENGINEER OR HIS REPRESENTATIVE.
- CONFLICTING STRIPES AND PAVEMENT MARKINGS SHALL BE COMPLETELY
REMOVED BY CONTRACTOR. NEW STRIPES AND PAVEMENT MARKINGS,
INCLUDING REQUIRED REPAINTING, SHALL ALSO BE PERFORMED BY
CONTRACTOR.

VICINITY MAP

NOT TO SCALE



UNDERGROUND SERVICE ALERT
CALL: TOLL FREE
1-800
227-2600
TWO WORKING DAYS BEFORE YOU DIG



CITY BUSINESS TAX CERTIFICATE NO. 005751 EXP. 12-31-99

ALBERT A. WEBB ASSOCIATES
CIVIL ENGINEERS
3788 McCRAE STREET RIVERSIDE, CA 92506
(909) 686-1070

APPROVED BY: [Signature] DATE: 1-21-99
R.C.E. NO. C44762

W.O. 98-0360 FOR: FAIRFIELD RESIDENTIAL, INC. F.B. 1997

DESIGNED BY: CHECKED BY: PLN CHK REF

CITY OF RIVERSIDE, CALIFORNIA
PUBLIC WORKS DEPARTMENT

APPROVED BY: [Signature] DATE: 1-21-99
PRINCIPAL ENGINEER
PARK DEPARTMENT
TRAFFIC DEPARTMENT
DEPT. PUB. WKS. ENGR. [Signature]

DATE: 1-21-99

TRAFFIC SIGNAL PLAN

PARCEL MAP NO. 28919
FAIR ISLE DRIVE
@
LOCHMOOR DRIVE

SCALE: AS SHOWN

ACCOUNT NO. 98-0360

DRAWING NUMBER

X-502

SHEET 1 OF 1

98-0360

INDEXED 7-13-99 LTH
FILE WITH R-3528