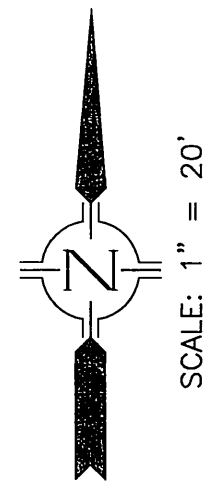
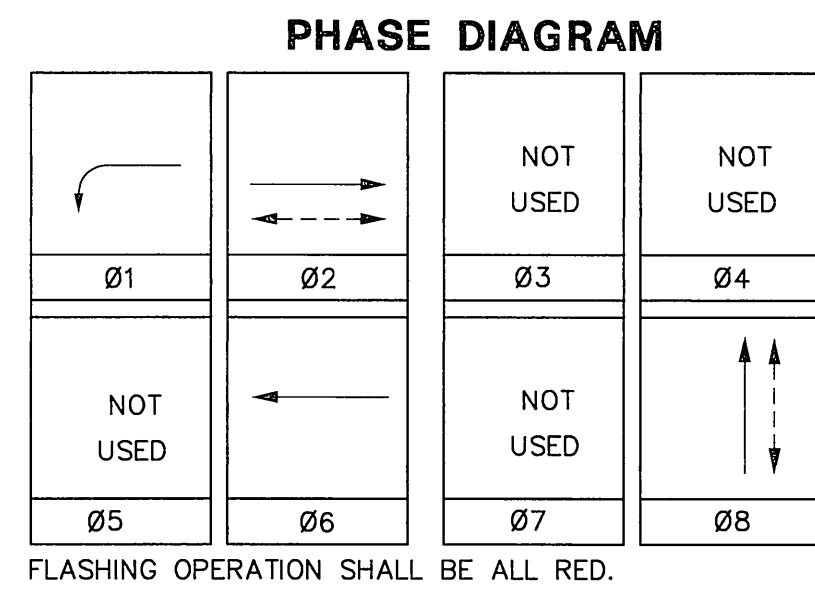


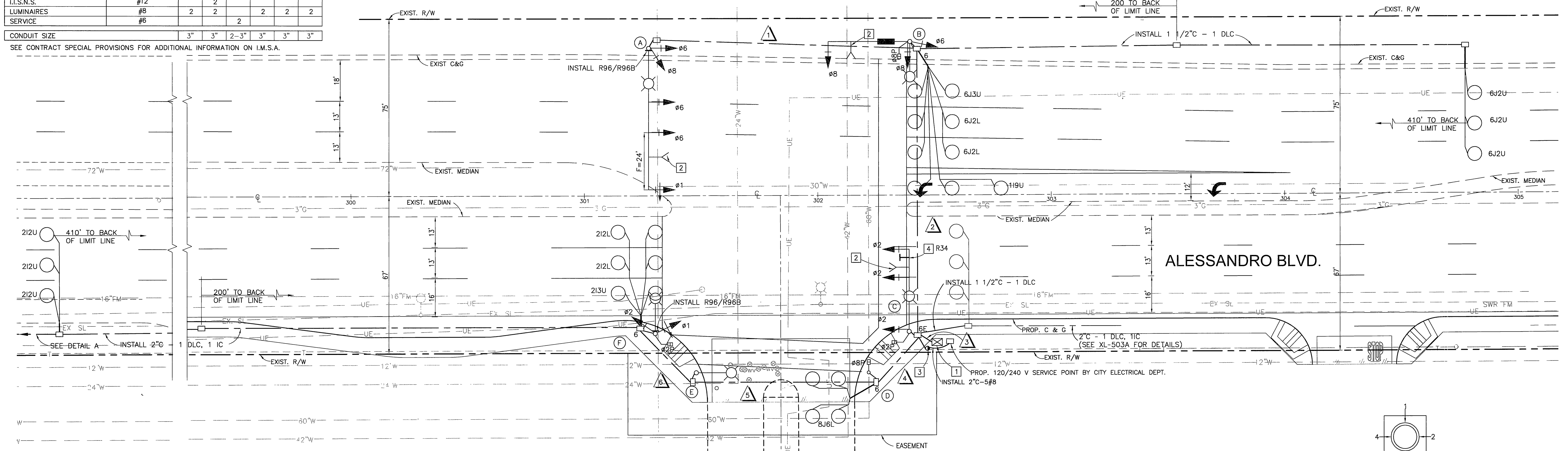
CONTROL FUNCTION	CONDUCTORS	CONDUCTOR RUNS					
		1	2	3	4	5	6
VEHICLE & PEDESTRIAN HEADS, PEDESTRIAN PUSH BUTTONS, SPARES & COMMONS	12 WIRE IMSA 9 WIRE IMSA 5 WIRE IMSA 3 WIRE IMSA	1	2	4	1	1	1
DETECTOR CABLE	#16/2						
PHASE 1			1	1			
PHASE 2				3	3	3	3
PHASE 3							
PHASE 4							
PHASE 5							
PHASE 6			3	3			
PHASE 7							
PHASE 8				1	1		
PRIORITY PRE-EMPT	4#20	1	2	3			
INTERCONNECT CABLE	6 PAIR #19			2	1	1	1
I.I.S.N.S.	#12		2				
LUMINAIRES	#8	2	2		2	2	2
SERVICE	#6			2			
CONDUIT SIZE		3"	3"	2-3"	3"	3"	3"

SEE CONTRACT SPECIAL PROVISIONS FOR ADDITIONAL INFORMATION ON I.M.S.A.



POLE NO.	TYPE	HEIGHT	MAST ARM LENGTH		SIGNAL MOUNTING			PPB	H.P.S.V.	I.I.S.N.S.	REMARKS
			SIGNAL	LUMINAIRE	MA	POLE	PED				
A	61-5-80	30'	60'	15'	3-MAS	SV-2-T			250 W		
B	24-4-80	30'	35'	15'	MAS	SV-2-T	SP-1-T	8	4	250 W	ALESSANDRO BLVD 500
C	24-4-80	30'	35'	15'	2-MAS	SV-1-T	SP-1-T	8	4	250 W	
D	1-A	7'	-	-	-	-	TP-1	2	1		
E	15	30'	-	15'	-	-		2	1	250 W	
F	15	30'	-	15'	-	SV-2-T	SP-1-T			250 W	

EXACT POLE LOCATION TO BE DETERMINED BY THE ENGINEER IN THE FIELD  
 TYPE 1-A SHALL BE SPUN ALUMINUM  
 NEW VEHICLE SIGNAL SHALL HAVE 12" RED, YELLOW, AND GREEN LEDS PER CONTRACT SPECIAL PROVISIONS.  
 PEDESTRIAN INDICATIONS SHALL HAVE LEDS.

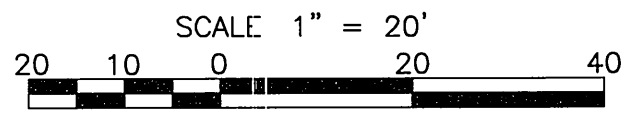
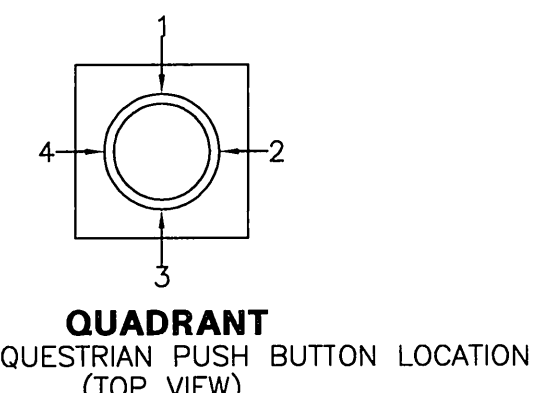
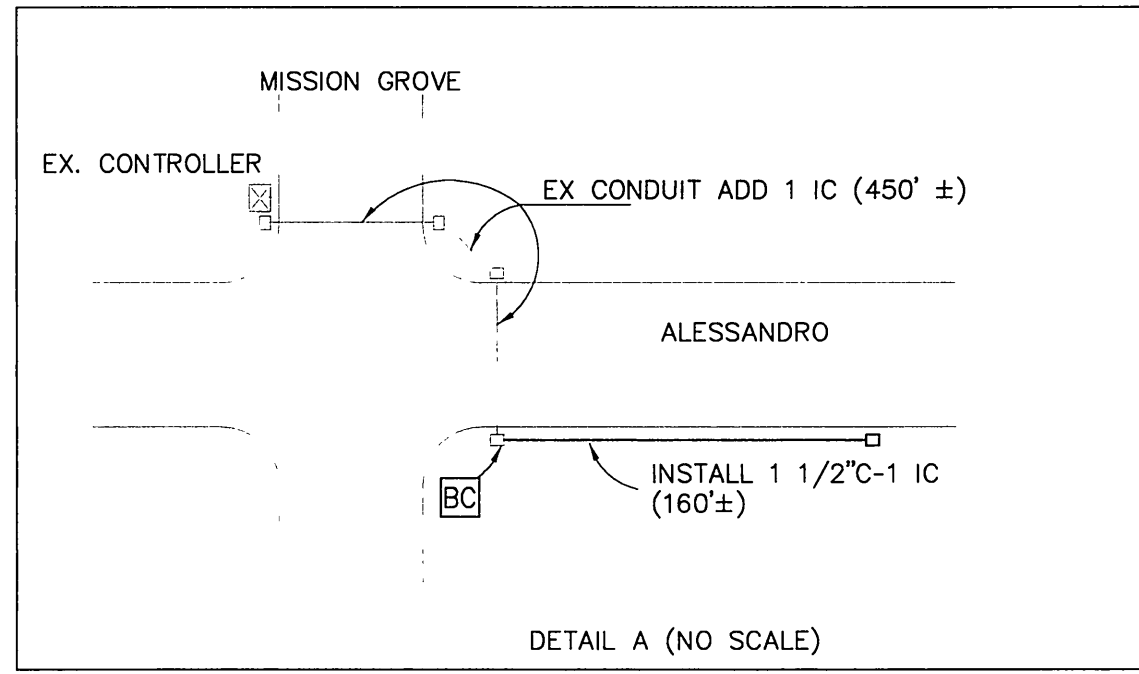


**GENERAL NOTES:**

- TRAFFIC SIGNAL WORK SHALL CONFORM TO THE PROVISIONS OF SECTION 86 OF THE MOST CURRENT STANDARD SPECIFICATIONS, THE STANDARD PLANS, BOTH PUBLISHED BY CALTRANS APPLICABLE CITY OF RIVERSIDE STANDARD DRAWINGS, AND THE CONTRACT
- ALL EQUIPMENT AND LOOP LOCATIONS SHALL BE APPROVED BY THE TRAFFIC ENGINEER OR HIS REPRESENTATIVE PRIOR TO INSTALLATION BY CONTRACTOR.
- ALL STRIPING, PAVEMENT MARKINGS AND SIGN REQUIREMENTS (REMOVAL OR INSTALLATIONS) SHALL BE COMPLETED AT LEAST ONE DAY PRIOR TO THE SCHEDULE TURN ON.
- IT SHALL BE THE RESPONSIBILITY OF THE CONTRACTOR TO VERIFY THE EXISTENCE AND LOCATION OF ALL UNDERGROUND UTILITIES, PUBLIC OR PRIVATE, AND TO PROTECT THEM FROM DAMAGE. THE CONTRACTOR SHALL BEAR THE TOTAL EXPENSE OF REPAIR OR REPLACEMENT OF ANY UNDERGROUND FACILITY DAMAGE BY HIS OPERATIONS.
- UNLESS SHOWN OTHERWISE, ALL INDUCTIVE LOOPS SHALL BE 6' ROUND WITH 10', 15' SPACINGS IN THE DIRECTION OF TRAVEL. NECESSARY STRIPING SHALL BE LOCATED PRIOR TO POSITIONING DETECTORS. ALL CONDUIT SIZE SHALL BE 2" MINIMUM UNLESS OTHERWISE NOTED.
- SPLICING OF THE CONDUCTORS IS NOT ALLOWED.
- INSPECTION FEE WILL BE AT THE RATE OF \$55.00 PER HOUR.
- FOR ROADWAY CONSTRUCTION DETAILS SEE STREET IMPROVEMENT PLAN R-3636
- FOR SIGNING AND STRIPING DETAILS SEE SIGNING AND STRIPING PLAN XL-460
- CALL (909) 351-6096 AT LEAST 48 HOURS IN ADVANCE FOR INSPECTION.

**CONSTRUCTION NOTES:**

- FURNISH AND INSTALL TYPE 170 E CONTROLLER AND TYPE 332 CONTROLLER CABINET PER CONTRACT SPECIAL PROVISIONS.
- INSTALL PRE-EMPTION DETECTOR PER CONTRACT SPECIAL PROVISIONS
- INSTALL TYPE 1-A POLE AND 120V SIGNAL, 120V SIGN and 240V ST. LT. SERVICE PER STD. DWG. No. 667.
- INSTALL SIGN (AS SHOWN) ON SIGNAL MAST ARM



Underground Service Alert Call: TOLL FREE 1-800-227-2600 TWO WORKING DAYS BEFORE YOU DIG	<b>PRIVATE ENGINEERING NOTE</b> CONSTRUCTION CONTRACTOR AGREES THAT IN ACCORDANCE WITH GENERALLY ACCEPTED CONSTRUCTION PRACTICES, CONSTRUCTION CONTRACTOR WILL BE REQUIRED TO ASSUME SOLE AND COMPLETE RESPONSIBILITY FOR JOB SITE CONDITIONS DURING THE COURSE OF CONSTRUCTION OF THE PROJECT, INCLUDING SAFETY OF ALL PERSONS AND PROPERTY THAT THIS REQUIREMENT SHALL BE MADE TO APPLY CONTINUOUSLY AND NOT BE LIMITED TO NORMAL WORKING HOURS, AND CONSTRUCTION CONTRACTOR FURTHER AGREES TO DEFEND, INDEMNIFY AND HOLD DESIGN PROFESSIONAL HARMLESS FROM ANY AND ALL LIABILITY, REAL OR ALLEGED, IN CONNECTION WITH THE PERFORMANCE OF WORK ON THIS PROJECT, EXCEPTING LIABILITY ARISING FROM THE SOLE NEGLIGENCE OF DESIGN PROFESSIONAL		PREPARED UNDER THE DIRECTION OF:  TECK C. LOH REGISTERED CIVIL ENGINEER NO. 50293 EXPIRATION DATE: 6-30-05 DATE: 1/25/02	 <b>CANTY ENGINEERING GROUP, INC.</b> CIVIL ENGINEERING - PLANNING - SURVEYING 2020 IOWA AVENUE, SUITE A-102, P.O. BOX 52050, RIVERSIDE, CA 92517 TEL (909) 683-5234 FAX (909) 683-5301	SCALE: 1" = 20' BENCH MARK: DATE: JANUARY 2002	MARK REVISIONS APPR. DATE DESIGNED BY K.T.O. DRAWN BY K.T.O. CHECKED BY T.L.	CITY OF RIVERSIDE, CALIFORNIA DEPARTMENT OF PUBLIC WORKS	<b>TRAFFIC SIGNAL PLAN</b> MISSION PLAZA EAST AND ALESSANDRO BLVD. FOR: REGIONAL PROPERTIES	PROJECT NO. X-510
							APPROVED BY: [Signature] PRINCIPAL ENGR. DATE: 1/25/02 PARK DEPARTMENT TRAFFIC DIVISION P.W. ENGINEER, MGR. DATE: 2/4/02 STREET SERVICES		APPROVED BY: [Signature] DIRECTOR OF PUBLIC WORKS DATE: 2/4/02