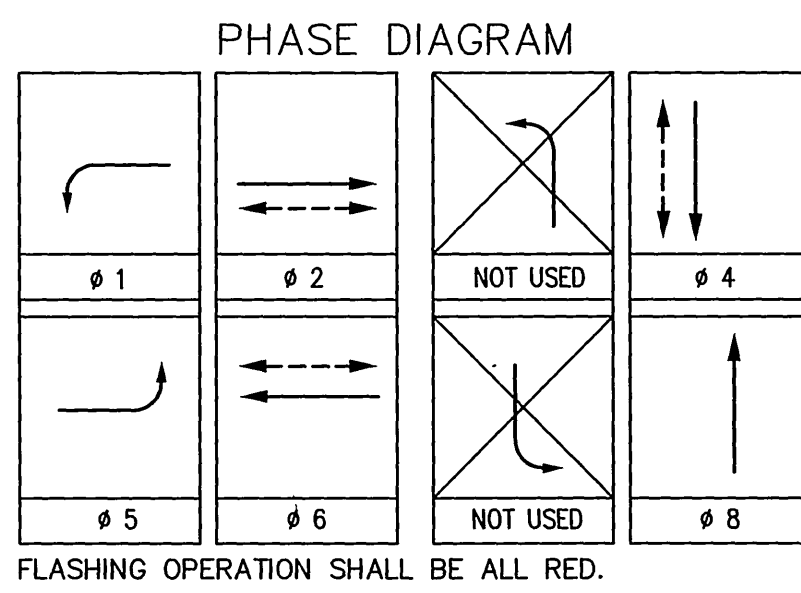
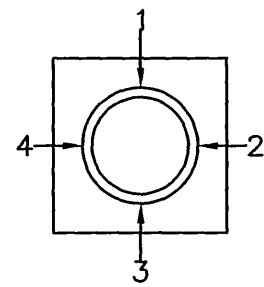


CONDUCTOR		TABLE						
CONTROL FUNCTION	CONDUCTORS	CONDUCTOR RUNS						
		1	2	3	4	5	6	7
VEHICLE & PEDESTRIAN HEADS, PEDESTRIAN PUSH BUTTONS, SPARES & COMMONS	12 WIRE IMSA 9 WIRE IMSA 5 WIRE IMSA 3 WIRE IMSA	1 2 - 1	2 2 - 3	3 4 - 6	3 2 - 2	- 2 - 1	- 1 - 2	- 1 - 1
DETECTOR CABLE	#16/2	-	-	-	-	-	-	-
PHASE 1		-	-	1	1	1	1	1
PHASE 2		-	2	2	2	-	-	-
PHASE 3		-	-	-	-	-	-	-
PHASE 4		-	-	-	1	1	-	-
PHASE 5		-	1	1	1	-	-	-
PHASE 6		-	-	-	3	3	3	3
PHASE 7		-	-	-	-	-	-	-
PHASE 8		1	1	1	1	-	-	-
PRIORITY PRE-EMPT	#20	1	2	3	3	-	-	-
I.I.S.N.S.	#12	2	2	2	-	-	-	-
LUMINAIRES	#8	2	2	2	-	2	2	2
SIGNAL SERVICE	#6	2	2	2	2	-	-	-
INTERCONNECT	6 PAIR #19	-	2	2	2	-	-	-
CONDUIT SIZE		3"	3"	3"	2-3"	3"	3"	3"
ALL CONDUITS SHALL BE NEW		N	N	N	N	N	N	N

SEE CONTRACT SPECIAL PROVISIONS FOR ADDITIONAL INFORMATION ON I.M.S.A.

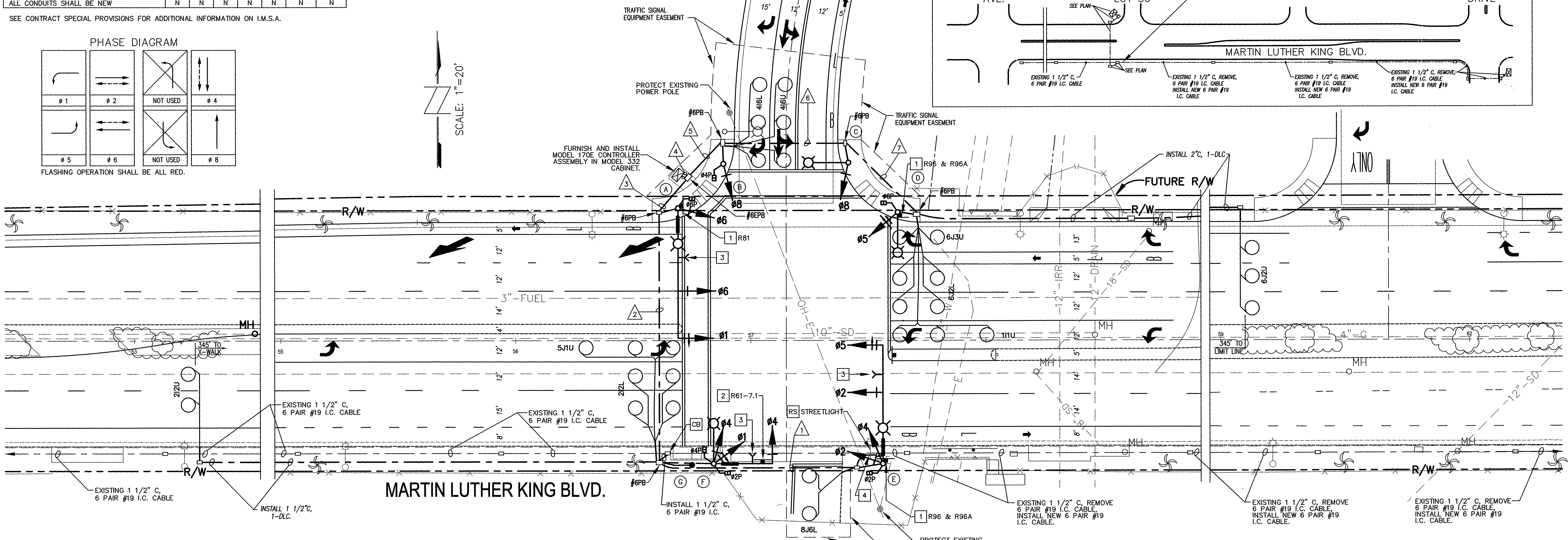
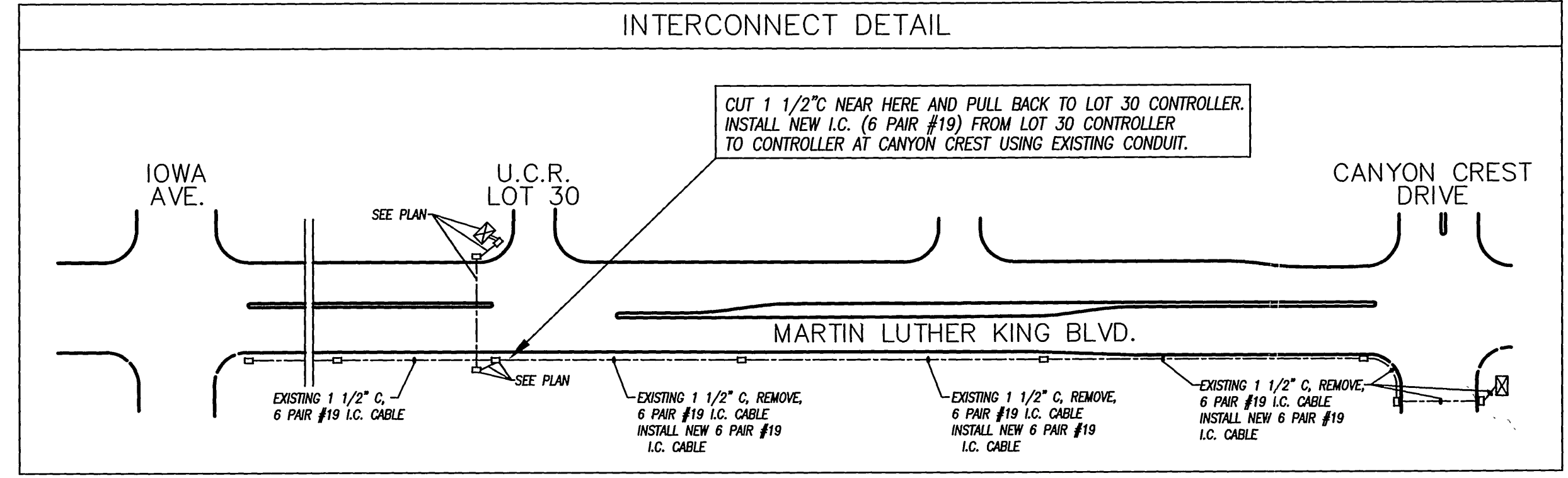


QUADRANT PEDESTRIAN/EQUESTRIAN PUSH BUTTON LOCATION (TOP VIEW)



POLE SCHEDULE														
NO.	TYPE	POLE HEIGHT	MAST ARM LENGTH		SIGNAL MOUNTING			PPB/EPB	H.P.S.V. LUMINAIRE	I.I.S.N.S. LEGEND	REMARKS			
			SIGNAL	LUMINAIRE	MA	POLE	PED					AUDIBLE		
A	29-5-80	30'	55'	15'	2-MAS	SV-1-T	SP-1-T	(P)	4	2	250 W	UCR Lot 30	INSTALL NEW EQUIPMENT. F=20'	
B	1-A	10'	-	-	-	TV-1-T	SP-1-T	(C)	6	3	-	-	INSTALL NEW EQUIPMENT.	
C	15	30'	-	15'	-	SV-1-T	-	-	6	3	250 W	-	INSTALL NEW EQUIPMENT.	
D	15	30'	-	15'	-	SV-1-T	SP-1-T	(P)	-	-	250 W	-	INSTALL NEW EQUIPMENT.	
E	29-5-80	30'	50'	15'	2-MAS	SV-2-T	SP-1-T	(P)	2	1	250 W	UCR Lot 30	INSTALL NEW EQUIPMENT. F=20' EXACT POLE LOCATION TO BE DETERMINED BY CITY ENGINEER DUE TO O.H. LINE CLEARANCE.	
F	24-4-80	30'	25'	15'	MAS	SV-2-T	SP-2-T	(C)	(P)	-	250 W	Martin Luther King Blvd	INSTALL NEW EQUIPMENT. BLANK PANEL ON ONE SIDE.	
G	PPB POST	4'	-	-	-	-	-	-	2	4	1	2	-	INSTALL NEW EQUIPMENT.

EXACT POLE LOCATION TO BE DETERMINED BY THE TRAFFIC ENGINEER OR HIS REPRESENTATIVE IN THE FIELD.  
 ALL YELLOW SIGNALS SHALL HAVE 12" LENS (GLASS).  
 ALL RED AND GREEN VEHICLE SIGNALS SHALL HAVE 12" LED LENS.  
 ROTATE LUMINAIRE 90° COUNTER CLOCKWISE TO MAST ARM.  
 POTHOLE POLE FOUNDATIONS PRIOR TO ORDERING POLES.  
 LUMINAIRES SHALL BE HIGH PRESSURE SODIUM VAPOR.  
 (C) OR (P) INDICATES AUDITORY PEDESTRIAN SIGNAL TO BE INSTALLED.  
 (C) INDICATES CUCKOO SOUND. (P) INDICATES PEEP-PEEP SOUND.



GENERAL NOTES:

- 1 TRAFFIC SIGNAL WORK SHALL CONFORM TO THE PROVISIONS OF SECTION 86 OF THE MOST CURRENT STANDARD SPECIFICATIONS, THE STANDARD PLANS: BOTH PUBLISHED BY CALTRANS, APPLICABLE CITY OF RIVERSIDE STANDARD DRAWINGS, AND THE CONTRACT SPECIAL PROVISIONS.
- 2 ALL EQUIPMENT AND LOOP LOCATIONS SHALL BE APPROVED BY THE TRAFFIC ENGINEER OR HIS REPRESENTATIVE PRIOR TO INSTALLATION BY CONTRACTOR.
- 3 ALL STRIPING, PAVEMENT MARKINGS AND SIGN REQUIREMENTS (REMOVAL OR INSTALLATIONS) SHALL BE COMPLETED AT LEAST ONE DAY PRIOR TO THE SCHEDULE TURN ON. SEE SIGNING AND STRIPING PLAN XL-449.
- 4 IT SHALL BE THE RESPONSIBILITY OF THE CONTRACTOR TO VERIFY THE EXISTENCE AND LOCATION OF ALL UNDERGROUND UTILITIES, PUBLIC OR PRIVATE, AND TO PROTECT THEM FROM DAMAGE. THE CONTRACTOR SHALL BEAR THE TOTAL EXPENSE OF REPAIR OR REPLACEMENT OF ANY UNDERGROUND FACILITY DAMAGE BY HIS OPERATIONS.
- 5 UNLESS SHOWN OTHERWISE, ALL INDUCTIVE LOOPS SHALL BE 6' ROUND WITH 10', 15' SPACINGS IN THE DIRECTION OF TRAVEL. NECESSARY STRIPING SHALL BE LOCATED PRIOR TO POSITIONING DETECTORS. ALL CONDUIT SIZE SHALL BE 2" MINIMUM UNLESS OTHERWISE NOTED.
- 6 SPLICING OF THE CONDUCTORS IS NOT ALLOWED.
- 7 ALL SALVAGE MATERIALS SHALL BE DELIVERED TO CITY YARD AT 8095 LINCOLN AVENUE.
- 8 FOR ROADWAY CONSTRUCTION DETAILS SEE STREET IMPROVEMENT PLAN R-3507.
- 9 CALL (909) 351-6096 AT LEAST 48 HOURS IN ADVANCE FOR INSPECTION.
- 10 INSPECTION FEE WILL BE AT THE RATE OF \$55 PER HOUR.
- 11 ALL PAVEMENT MARKINGS EXCEPT FOR STRIPING SHALL BE THERMOPLASTIC PER THESE SPECIAL PROVISIONS.

CONSTRUCTION NOTES:

- RS REMOVE AND SALVAGE EXISTING EQUIPMENT.
- CB CONDUIT TO PULLBOX.
- 1 INSTALL SIGN ON POLE PER CALTRANS STANDARDS.
- 2 INSTALL SIGN ON MAST ARM PER CALTRANS STANDARDS.
- 3 INSTALL NEW PRE-EMPTION DETECTOR. SEE SPECIAL PROVISIONS.
- 4 INSTALL SERVICE DISCONNECT (STD. #667).

1140-00-02-SHT3.DWG-JP-12/04/00



PRIVATE ENGINEERING NOTE  
 CONSTRUCTION CONTRACTOR AGREES THAT IN ACCORDANCE WITH GENERALLY ACCEPTED CONSTRUCTION PRACTICES, CONSTRUCTION CONTRACTOR WILL BE RESPONSIBLE FOR OBTAINING ALL NECESSARY PERMITS AND ASSUMING ALL LIABILITY FOR ANY DAMAGE TO UNDERGROUND UTILITIES, PUBLIC OR PRIVATE, AND TO PROTECT THEM FROM DAMAGE. THE CONTRACTOR SHALL BEAR THE TOTAL EXPENSE OF REPAIR OR REPLACEMENT OF ANY UNDERGROUND FACILITY DAMAGE BY HIS OPERATIONS.



PREPARED UNDER THE DIRECTION OF:  
 Robert K. Kahn  
 REGISTERED CIVIL ENGINEER NO. 20285  
 EXPIRATION DATE: 09-30-01 DATE: 12/15/00



SCALE: 1" = 20'  
 DATE: 11/15/00

MARK	REVISIONS	APPR.	DATE

CITY OF RIVERSIDE, CALIFORNIA  
 DEPARTMENT OF PUBLIC WORKS  
 APPROVED BY: [Signature]  
 P.W. ENGINEER, MGR. DATE: 12-15-2000

APPROVED BY: [Signature]  
 DIRECTOR OF PUBLIC WORKS  
 DATE: 12-15-2000

LOTS 14 AND 30  
 SIGNAL INSTALLATION PLAN  
 MARTIN LUTHER KING BLVD.  
 AND  
 U.C. RIVERSIDE LOT 30

PROJECT NO. X-511  
 SHEET 1 OF 1  
 FOR: GFB-FRIEDRICH & ASSOC., INC. FILE NO.: