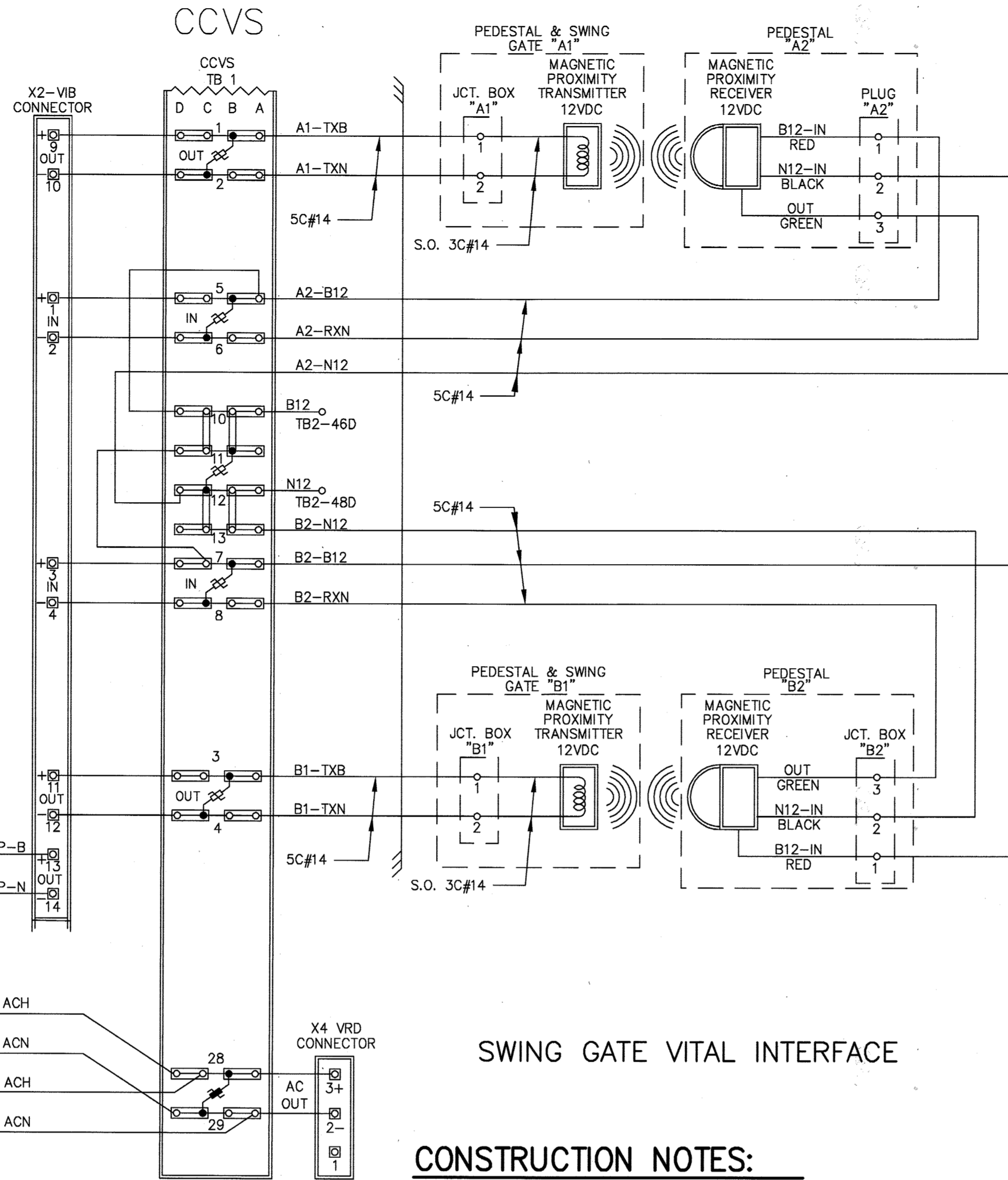
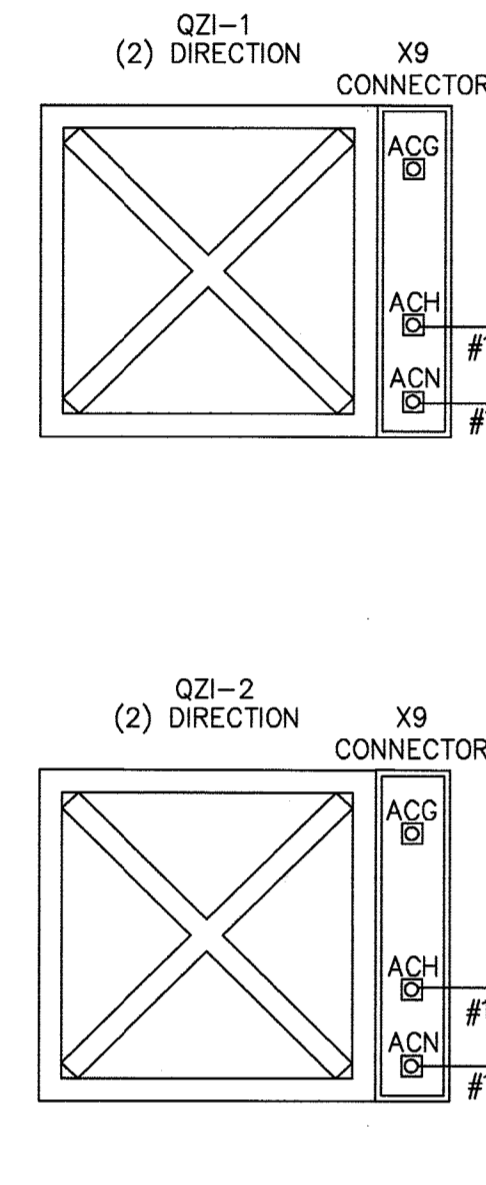
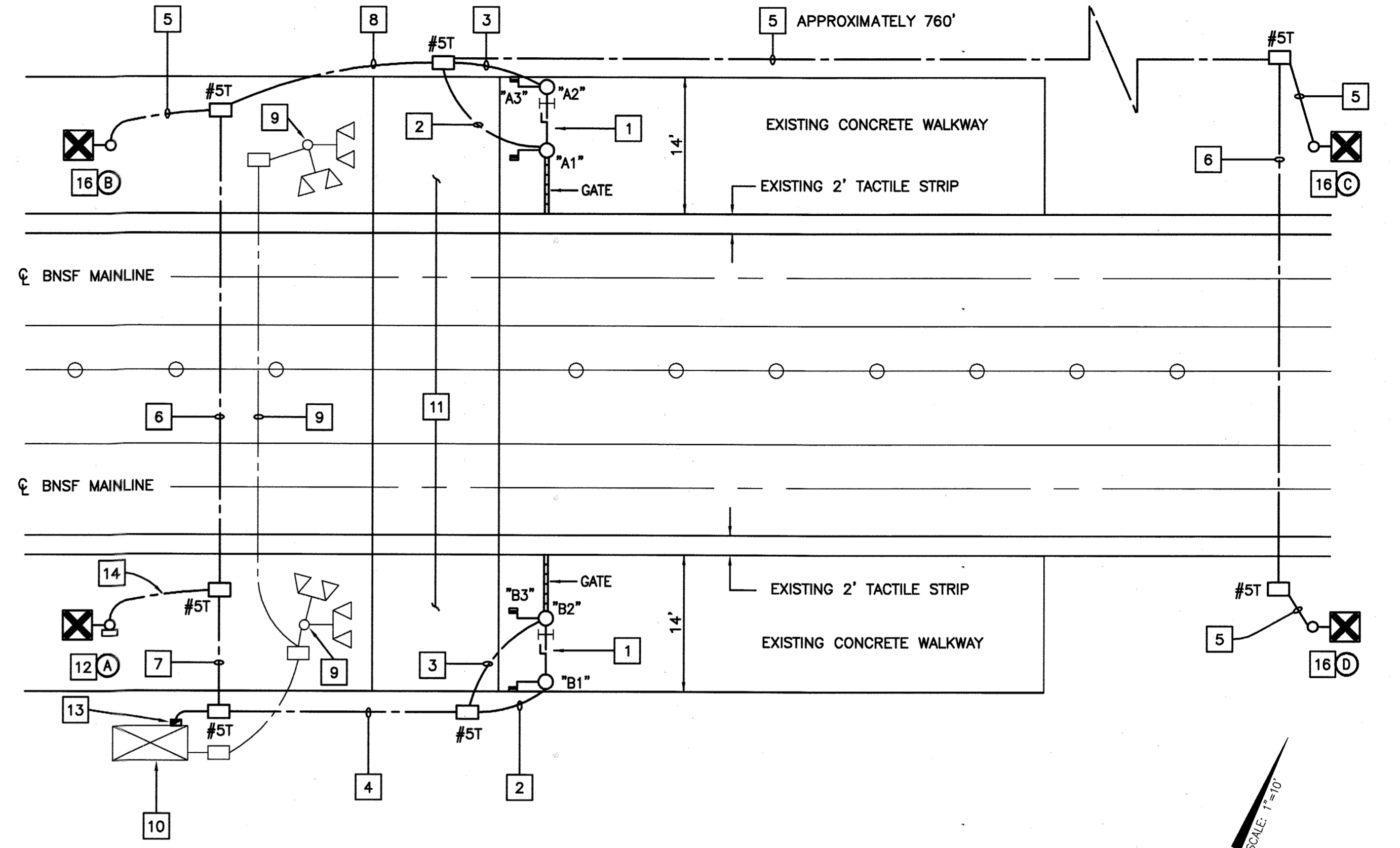


- MAGNETIC PROXIMITY RECEIVER: HONEYWELL PART # SR4P3-A1 -40°C TO +85°C -40°F TO +185°F
- MAGNETIC PROXIMITY TRANSMITTER: RCL PART # 07-001-036



# LA SIERRA METROLINK STATION



## SWING GATE VITAL INTERFACE

### CONSTRUCTION NOTES:

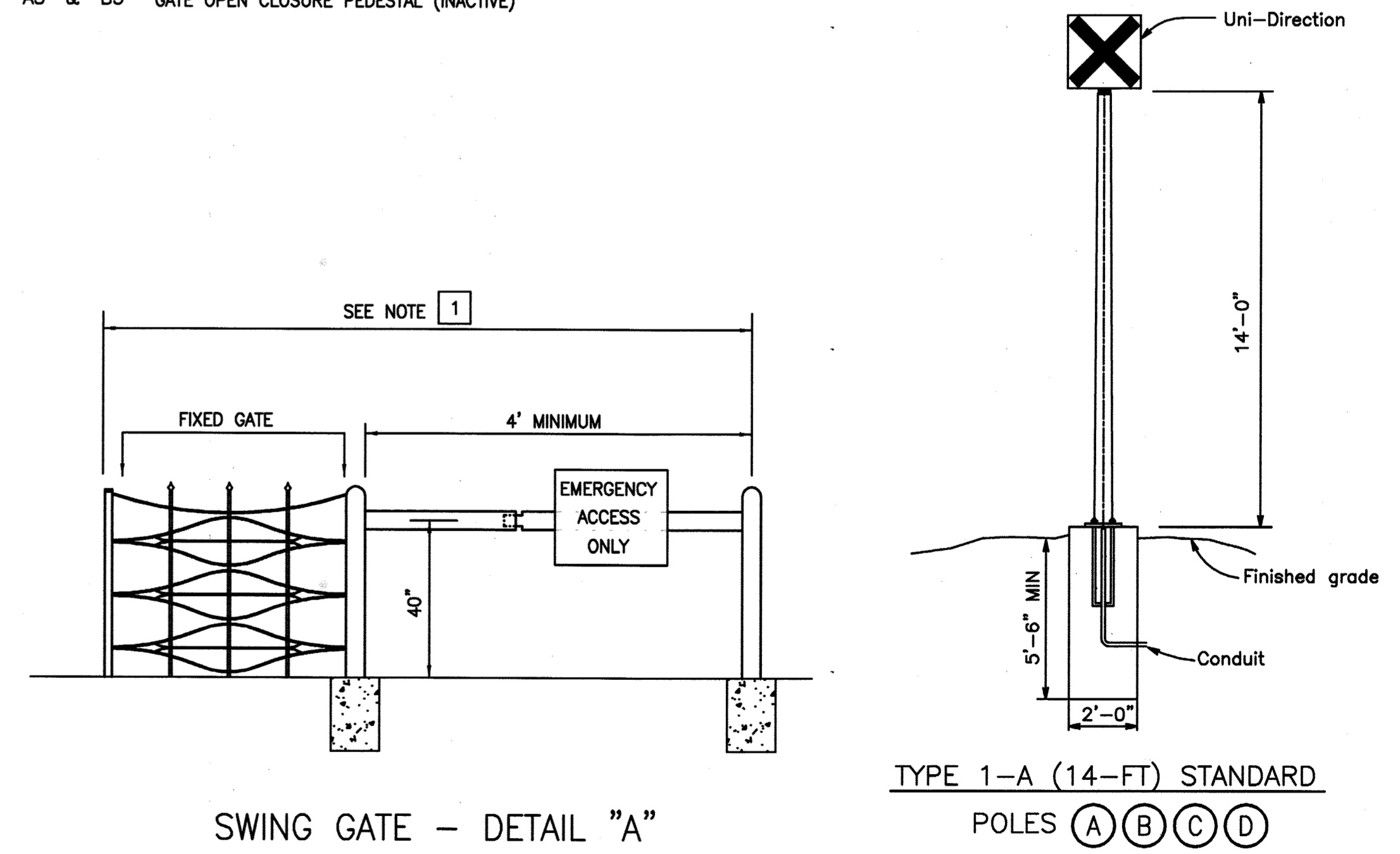
- CONTRACTOR SHALL INSTALL A 13' CROSSING CLOSURE GATE VERIFICATION SYSTEM (CCVS) PER DETAIL "A". SWING GATE SHALL HAVE A 2'x3' FOUNDATIONS AND SHALL HAVE 24"x30" BACK-TO-BACK "EMERGENCY ACCESS ONLY" SIGNS - BLACK ON FLOURESCENT-YELLOW SIGNS. WHEN THE GATE IS IN THE CLOSED POSITION THE RED "X" INDICATIONS ON THE 1A (14') POLES SHALL BE ON. WHEN THE GATE IS IN THE OPEN POSITION, THE "X" INDICATIONS SHALL BE DARK TO INFORM TRAIN CONDUCTORS TO SOUND THE WAYSIDE HORNS. CONTRACTOR SHALL COORDINATE WITH BNSF TO INSTALL SYSTEM INCLUDING SWITCHES, RELAYS, AND TESTING PROCEDURES FOR GATE SYSTEM. GATE SHALL BE SINGLE SWING.
- INSTALL 2" GRC CONDUIT WITH 2#14 (GATES) CONDUCTORS
- INSTALL 2" GRC CONDUIT WITH 3#14 (GATES) CONDUCTORS
- INSTALL 2" GRC CONDUIT WITH 5#14 (GATES) CONDUCTORS
- INSTALL 2" GRC CONDUIT WITH 4#10 (QUIET ZONE INDICATIONS (QZI)) CONDUCTORS
- INSTALL 2" GRC CONDUIT VIA DIRECTIONAL BORE METHOD, AT LEAST 5'-6" UNDERNEATH THE RAILROAD TRACKS, WITH 4#10 (QZI) CONDUCTORS. INSTALL 5#14 (GATES) CONDUCTORS IN THE WESTERLY CONDUIT CROSSING.
- INSTALL 2" GRC CONDUIT, WITH 5#14 (GATES) AND 2#6 ELECTRICAL SERVICE CONDUCTORS.
- INSTALL 2" GRC CONDUIT, WITH 5#14 (GATES) AND 4#10 (QUIET ZONE INDICATIONS (QZI)) CONDUCTORS
- EXISTING RAILROAD EQUIPMENT, PROTECT IN PLACE
- EXISTING RAILROAD CONTROLLER ENCLOSURE, PROTECT IN PLACE.
- EXISTING PEDESTRIAN CONCRETE WALKWAY.
- INSTALL 1A (14-FT) CITY FURNISHED POLES PER DETAIL. CONTRACTOR SHALL FURNISH "X" INDICATION, SYSTEM CONTROLLER AND SHAFT MOUNTED CABINET. "X" INDICATION SHALL BE UNIDIRECTIONAL.
- THE CONTRACTOR SHALL COORDINATE WITH BNSF SO BNSF CAN PROVIDE A 12"x12" ELECTRICAL SUB PANEL ATTACHED TO THE OUTSIDE OF THE BUNGALOW WITH A 120/240V SERVICE AND 50 AMP BREAKER.
- INSTALL 2" GRC CONDUIT, WITH 10#14 (GATES), 8#10 (QZI), AND 2#6 (ELECTRICAL SERVICE)
- THE PROXIMITY SWITCHES AND SENSORS SHALL BE STAINLESS STEEL AND MEET BNSF STANDARDS AND SUPPLIED BY RCL
- INSTALL 1A (14-FT) CITY FURNISHED POLES PER DETAIL. CONTRACTOR SHALL FURNISH "X" INDICATION. "X" INDICATION SHALL BE UNIDIRECTIONAL.

### CROSSING CLOSURE VERIFICATION SYSTEM (CCVS) NOTES:

- "A1" & "B1" GATE HINGE PEDESTAL WITH ACTIVE CCVS TRANSMITTER
- "A2" & "B2" GATE HINGE CLOSURE PEDESTAL WITH ACTIVE CCVS RECEIVER SENSOR
- "A3" & "B3" GATE OPEN CLOSURE PEDESTAL (INACTIVE)

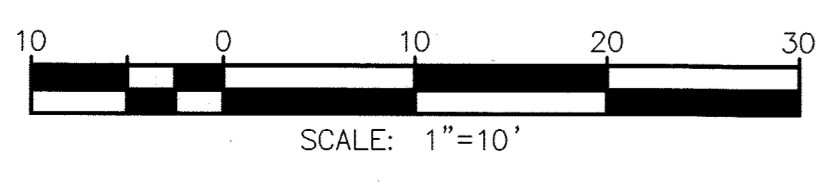
### TRAFFIC SIGNAL GENERAL NOTES:

- ALL ITEMS FURNISHED AND ALL WORK TO BE DONE SHALL CONFORM TO THE REQUIREMENTS OF: THE STATE OF CALIFORNIA, DEPARTMENT OF TRANSPORTATION (CALTRANS) STANDARD PLANS AND SPECIFICATIONS, DATED 2010; THE CALIFORNIA MANUAL ON UNIFORM TRAFFIC CONTROL DEVICES ADOPTED 2014; AND THE SPECIAL PROVISIONS.
- UTILITIES SHOWN ON THE PLAN ARE CORRECT AND ACCURATE TO THE EXTENT OF AVAILABLE RECORDS. THE CONTRACTOR IS REQUIRED TO TAKE STEPS TO ASCERTAIN THE EXACT LOCATION OF ALL KNOWN SUBSTRUCTURES PRIOR TO DOING WORK THAT MAY DAMAGE OR INTERFERE WITH SUCH FACILITIES ("UNDERGROUND SERVICE ALERT" (800) 227-2600)
- THE CONTRACTOR SHALL OBTAIN ALL NECESSARY PERMITS TO NOTIFY ALL AFFECTED AGENCIES AND THE RIVERSIDE UTILITY COMPANIES A MINIMUM OF 48 HOURS PRIOR TO START OF CONSTRUCTION.
- CONDUIT BETWEEN ADJOINING PULL BOXES SHALL BE 2" UNLESS SHOWN OTHERWISE. ALL CONDUIT AND FITTINGS SHALL BE RIGID METAL, UNLESS SHOWN OTHERWISE (BURIED IN A MINIMUM OF 30" OF COVER IN THE STREET AND PARKWAY).
- UNDERGROUND SIGNAL CONDUCTORS SHALL NOT BE SPLICED.
- PULL BOXES SHALL BE AS NOTED ON THE PLAN.
- PULL BOXES SHALL NOT BE LOCATED IN OR WITHIN 1' OF ANY CURB ACCESS RAMP.
- THE CONTRACTOR SHALL VERIFY WITH THE ENGINEER THE PRECISE FIELD LOCATIONS OF ALL TRAFFIC SIGNAL EQUIPMENT PRIOR TO THE INSTALLATION.
- ALL LANDSCAPING WHICH IS DAMAGED BY CONSTRUCTION ACTIVITIES SHALL BE REPAIRED OR REPLACED TO THE SATISFACTION OF THE CITY AND THE PROPERTY OWNER.
- DAMAGED CONCRETE SIDEWALK/PEDESTRIAN PATH SHALL BE REPAIRED PER CITY OF RIVERSIDE STANDARD AND TO THE SATISFACTION OF RCTC.
- IT SHALL BE THE RESPONSIBILITY OF THE CONTRACTOR TO FURNISH AND INSTALL ANY ADDITIONAL LOAD SWITCHES AND/OR DETECTOR CARDS, IF NECESSARY, FOR THE PROPOSED OPERATION.
- ALL CONTRACTORS WORKING ON OR AROUND THE CITY OF RIVERSIDE'S UNDERGROUND ELECTRICAL FACILITIES MUST HAVE THE PROPERLY QUALIFIED PERSONNEL AND EQUIPMENT TO PERFORM THE SPECIFIED WORK. THE CONTRACTOR WILL BE SOLELY RESPONSIBLE TO ESTABLISH AND MAINTAIN A SAFE WORKING ENVIRONMENT INCLUDING, BUT NOT LIMITED TO WORK AROUND ENERGIZED HIGH VOLTAGE FACILITIES, GAS TESTING OF CONFINED SPACES, TRAFFIC AND PROTECTION. EVERY ENTRY BY ANY PERSONNEL INTO A PUBLIC UTILITIES HIGH VOLTAGE STRUCTURE WILL REQUIRE THE PRESENCE OF A QUALIFIED ELECTRICAL WORKER IN ACCORDANCE WITH Cal/OSHA. ALL DEVELOPERS AND CONTRACTORS ARE REQUIRED TO SUBMIT REQUIRED DOCUMENTATION AND FOLLOW REQUIRED PROCEDURES. COPIES OF THE POLICY AND DOCUMENTS MAY BE OBTAINED AT 3901 ORANGE ST. RIVERSIDE, CA OR AT [WWW.RIVERSIDEPUBLICUTILITIES.COM](http://WWW.RIVERSIDEPUBLICUTILITIES.COM)
- IF NECESSARY, CONTRACTOR SHALL OBTAIN ENCROACHMENT PERMIT FROM BNSF RAIL AGENCY AND FROM RCTC FOR WORK WITHIN RESPECTIVE RIGHT-OF-WAYS.

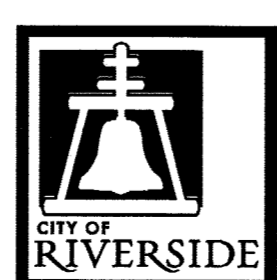


SWING GATE - DETAIL "A"

TYPE 1-A (14-FT) STANDARD POLES (A) (B) (C) (D)



Under Ground Service Alert of Southern California  
Call: TOLL FREE 1-800-227-2600  
TWO WORKING DAYS BEFORE YOU DIG



ENGINEER IN RESPONSIBLE CHARGE  
GILBERT M. HERNANDEZ  
R.C.E. No. 69170 EXPIRES: 06/30-16  
DATE: 12-16-2015



MARK	REVISIONS	APPR.	DATE

CITY OF RIVERSIDE, CALIFORNIA DEPARTMENT OF PUBLIC WORKS			
APPROVED BY	BY	DATE	APPROVED BY
ENGINEERING MANAGER	FM	12/16/15	CITY ENGINEER
TRAFFIC DIVISION	NM	12/16/15	DATE: 12/16/15
CONSTRUCTION ADMIN.	DC	12/16/15	

GATE PLAN	
LA SIERRA AVE METROLINK STATION	
SCALE: 1" = 10'	

X-541A
SHEET 1 OF 2
FILE NAME: X-541A.DWG