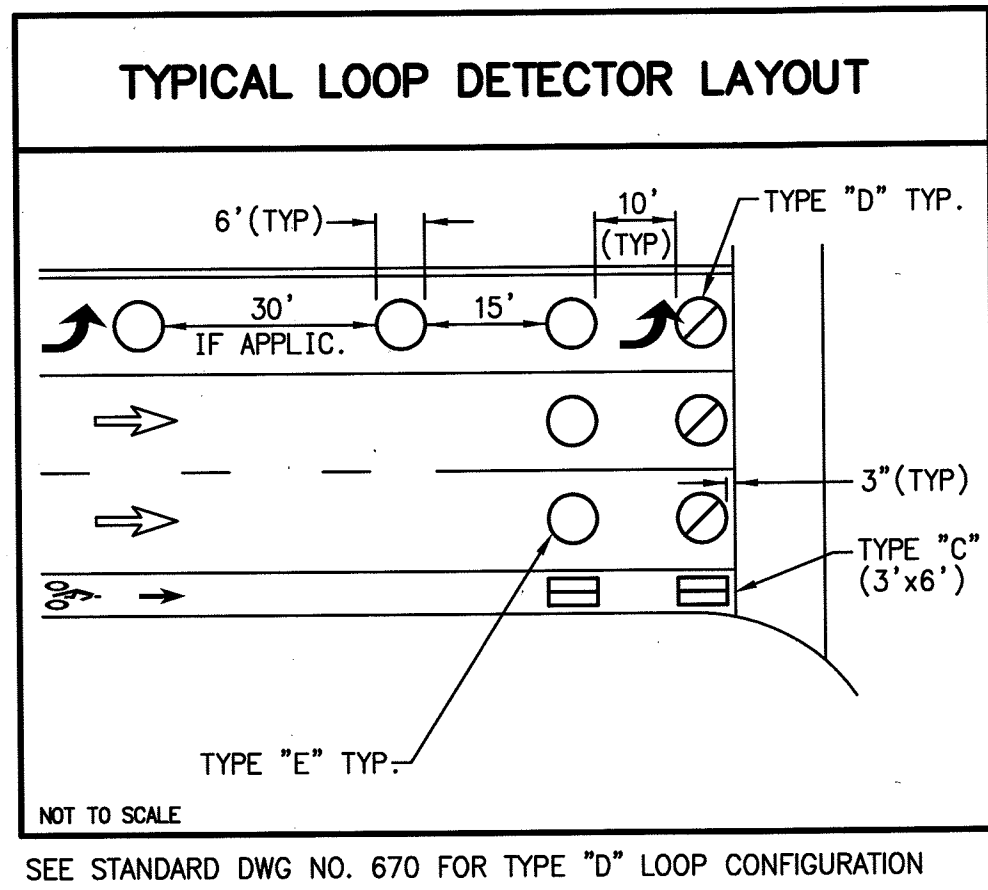


CONDUCTOR TABLE

CONTROL FUNCTION	CONDUCTORS	CONDUCTOR RUNS							
		1	2	3	4	5	6	7	8
VEHICLE & PEDESTRIAN HEADS, PEDESTRIAN PUSH BUTTONS, SPARES & COMMONS	12 CSC	1	2	3	8	4	3	2	1
	3 CSC	1	2	3	6	3	3	2	1
DETECTOR CABLE TYPE B									
PHASE 2			2	2	2				
PHASE 3					2	2	2	2	2
PHASE 4					4				
PHASE 6					2	2	2		
PHASE 7					2				
PHASE 8					4	4	4	4	4
I.I.S.N.S.	#12	2	2	2		2	2	2	
LUMINAIRES	#8	2	2	2		2	2	2	
SIGNAL SERVICE	#6				2				
WI-MAX TRANSCIEVER	CAT-5				1	1			
VEHICLE PREEMPTION	#20/3			1	4	3	1	1	
CONDUIT SIZE									
		3"	3"	3"	2-4"	4"	3"	3"	3"

SYSTEM SHALL HAVE ALL NEW CABLES, CONDUCTORS AND CONDUITS.



SEE STANDARD DWG NO. 670 FOR TYPE "D" LOOP CONFIGURATION

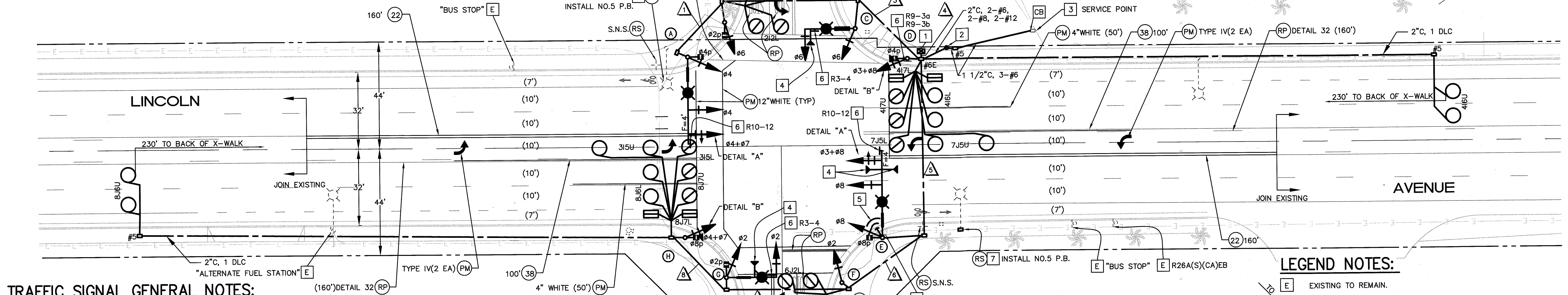
EQUIPMENT SCHEDULE

No.	TYPE	HGT.	SIG.	M.A.	LUM. M.A.	LUMINAIRE LED	ISNS LEGEND	SIGNAL MOUNTING			PPB PHASE	REMARKS
								VEHICLE	PED	AUDIBLE		
A	*24-4-100	30'	35'	12'		250W	St Lawrence	2-MAS	SV-1-T	SP-1-T	((P))	2
B	1-A	10'							TV-1-T	SP-1-T	((C))	4
C	17-3-100	30'	20'	12'		250W	Lincoln Ave 8100	MAS	SV-1-T			4
D	1-A	10'							TV-1-T	SP-1-T	((P))	
E	*24-4-100	30'	35'	12'		250W	St Lawrence	2-MAS	SV-1-T	SP-1-T	((P))	
F	1-A	10'							TV-1-T			8
G	17-3-100	30'	20'	12'		250W	Lincoln Ave 8000	MAS	SV-1-T	SP-1-T	((C))	8
H	1-A	10'							TV-1-T	SP-1-T	((P))	2

PEDESTRIAN AUDIBLES: C=CUCKOO (NORTH/SOUTH), P=PEEP PEEP (EAST/WEST)

*MAST ARMS SHALL HAVE END TENON

- ALL VEHICULAR HEADS SHALL HAVE 12" LENSES.
- PEDESTRIAN PUSH BUTTONS SHALL BE INSTALLED ON THE POLE IN THE QUADRANT NEAREST THE CROSSWALK SERVING THE PHASE.
- CONTRACTOR SHALL POT HOLE MAST ARM POLE FOUNDATIONS PRIOR TO ORDERING POLES AND MAST ARMS.
- ALL PEDESTRIAN HEADS SHALL BE LED COUNTDOWN HEADS.
- ALL LEFT TURN VEHICLE HEADS SHALL HAVE ALL ARROWS.
- ALL ISNS LIGHTING ASSEMBLIES SHALL BE LED PER CITY SPECIFICATION.

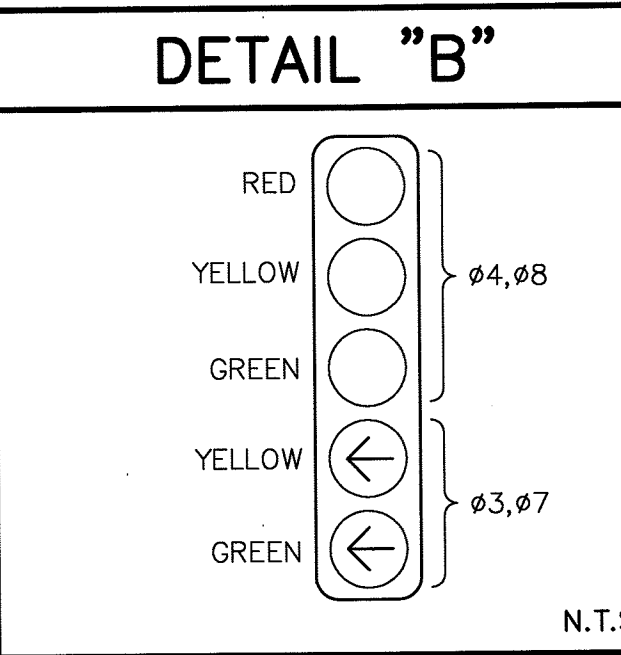
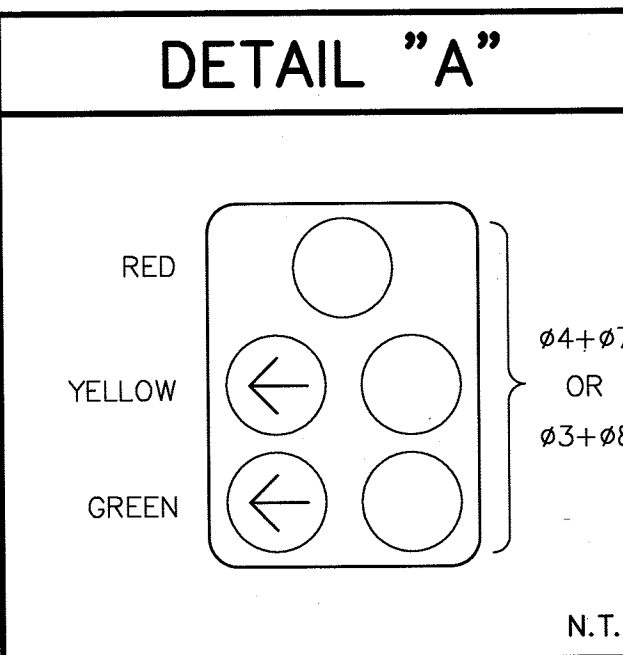


TRAFFIC SIGNAL GENERAL NOTES:

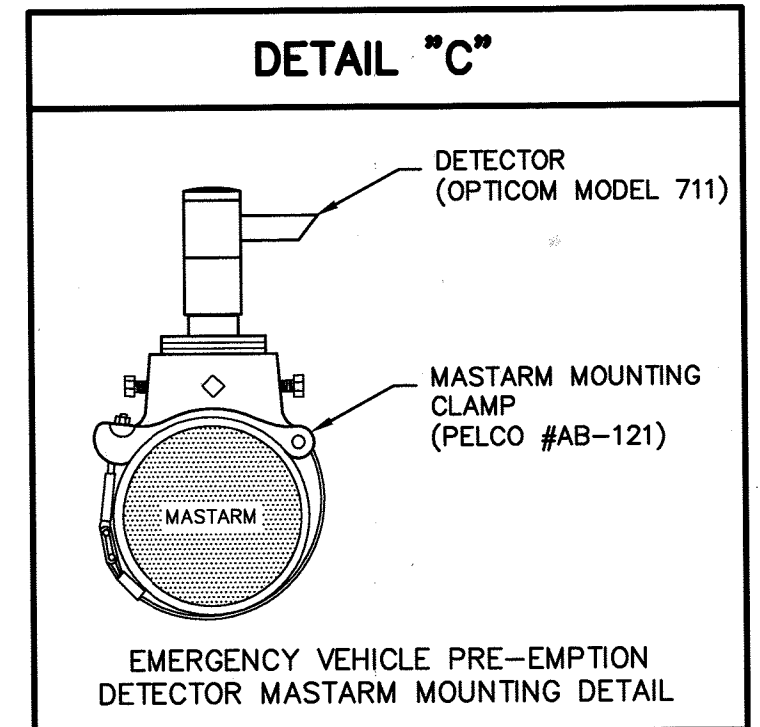
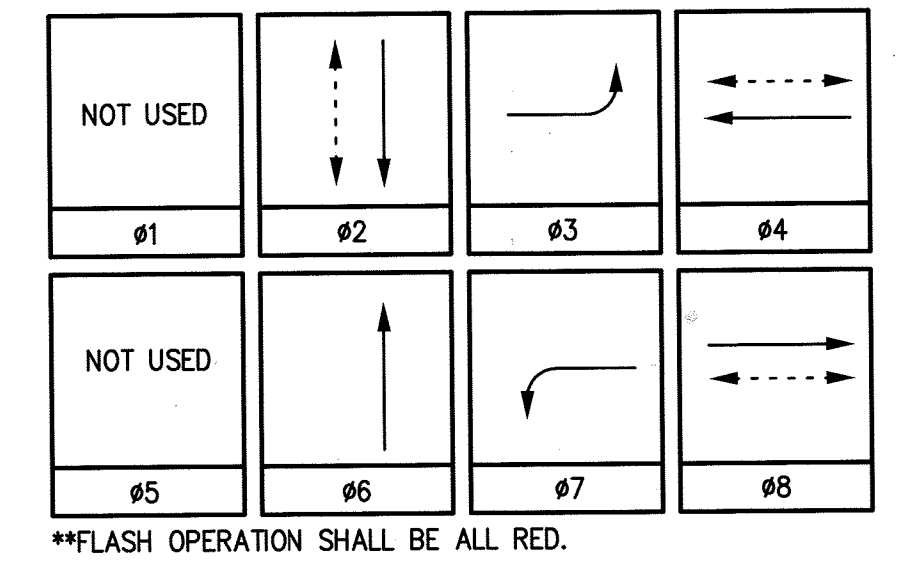
- ALL ITEMS FURNISHED AND ALL WORK TO BE DONE SHALL CONFORM TO THE REQUIREMENTS OF: THE STATE OF CALIFORNIA, DEPARTMENT OF TRANSPORTATION (CALTRANS) STANDARD PLANS AND SPECIFICATIONS, DATED 2008; THE CALIFORNIA MANUAL ON UNIFORM TRAFFIC CONTROL DEVICES ADOPTED 2012; AND THE SPECIAL PROVISIONS.
- UTILITIES SHOWN ON THE PLAN ARE CORRECT AND ACCURATE TO THE EXTENT OF AVAILABLE RECORDS. THE CONTRACTOR IS REQUIRED TO TAKE STEPS TO ASCERTAIN THE EXACT LOCATION OF ALL KNOWN SUBSTRUCTURES PRIOR TO DOING WORK THAT MAY DAMAGE OR INTERFERE WITH SUCH FACILITIES ("UNDERGROUND SERVICE ALERT" (800) 227-2600).
- THE CONTRACTOR SHALL OBTAIN ALL NECESSARY PERMITS TO NOTIFY ALL AFFECTED AGENCIES AND THE RIVERSIDE UTILITY COMPANIES A MINIMUM OF 48 HOURS PRIOR TO START OF CONSTRUCTION.
- UNLESS SHOWN OTHERWISE, INDUCTIVE LOOPS SHALL BE MODIFIED TYPE "D" & TYPE "E" WITH 10', 15' AND 30' SPACING IN THE DIRECTION OF TRAVEL. NECESSARY STRIPING SHALL BE LOCATED PRIOR TO POSITIONING LOOPS. LOOPS SHALL BE SEALED WITH HOT MELT SEALANT. SEE DETAIL.
- CONDUCTOR SCHEDULE IS FURNISHED AS AN INSTALLATION GUIDELINE ONLY. IT SHALL BE THE CONTRACTOR'S RESPONSIBILITY TO PROVIDE THE CORRECT CONDUCTORS REQUIRED FOR THE INTENDED OPERATION.
- CONDUIT BETWEEN ADJOINING PULL BOXES SHALL BE 2" UNLESS SHOWN OTHERWISE. ALL CONDUIT AND FITTINGS SHALL BE RIGID METAL, UNLESS SHOWN OTHERWISE (BURIED IN A MINIMUM OF 30" OF COVER IN THE STREET AND PARKWAY).
- UNDERGROUND SIGNAL CONDUCTORS SHALL NOT BE SPLICED.
- PULL BOXES SHALL BE No. 6 WITH FIBERLITE LIDS LABELED "TRAFFIC SIGNAL" UNLESS OTHERWISE NOTED ON THE PLAN.
- PULL BOXES SHALL NOT BE LOCATED IN OR WITHIN 1' OF ANY CURB ACCESS RAMP OR DRIVEWAY.
- THE CONTRACTOR SHALL VERIFY WITH THE ENGINEER THE PRECISE FIELD LOCATIONS OF ALL TRAFFIC SIGNAL EQUIPMENT PRIOR TO THE INSTALLATION.
- ALL LANDSCAPING WHICH IS DAMAGED BY CONSTRUCTION ACTIVITIES SHALL BE REPAIRED OR 11. REPLACED TO THE SATISFACTION OF THE CITY AND THE PROPERTY OWNER.
- NEW MAST ARM MOUNTED SIGN SHALL BE FABRICATED WITH 3M DIAMOND GRADE D03 REFLECTIVE SHEETING (ASTM TYPE XI) OR APPROVED EQUAL. MINIMUM SIGN SIZE SHALL BE 30" x 30"
- VEHICLE HEADS SHALL BE 12" LED TYPE. THE HOUSING, BACKPLATES AND VISORS SHALL BE METAL.

- INTERNALLY ILLUMINATED STREET NAME SIGNS (ISNS) SHALL BE TYPE A. STREET NAME LEGENDS SHALL BE UPPER/LOWER CASE AND SHALL INCLUDE BLOCK NUMBERS AND ROAD NAME SUFFIXES.
- ALL CONTRACTORS WORKING ON OR AROUND THE CITY OF RIVERSIDE'S UNDERGROUND ELECTRICAL FACILITIES MUST HAVE THE PROPERLY QUALIFIED PERSONNEL AND EQUIPMENT TO PERFORM THE SPECIFIED WORK. THE CONTRACTOR WILL BE SOLELY RESPONSIBLE TO ESTABLISH AND MAINTAIN A SAFE WORKING ENVIRONMENT INCLUDING, BUT NOT LIMITED TO WORK AROUND ENERGIZED HIGH VOLTAGE FACILITIES, GAS TESTING OF CONFINED SPACES, TRAFFIC AND PROTECTION.

EVERY ENTRY BY ANY PERSONNEL INTO A PUBLIC UTILITIES HIGH VOLTAGE STRUCTURE WILL REQUIRE THE PRESENCE OF A QUALIFIED ELECTRICAL WORKER IN ACCORDANCE WITH Cal/OSHA. ALL DEVELOPERS AND CONTRACTORS ARE REQUIRED TO SUBMIT REQUIRED DOCUMENTATION AND FOLLOW REQUIRED PROCEDURES. COPIES OF THE POLICY AND DOCUMENTS MAY BE OBTAINED AT 3901 ORANGE ST. RIVERSIDE, CA OR AT WWW.RIVERSIDEPUBLICUTILITIES.COM



PHASE DIAGRAM

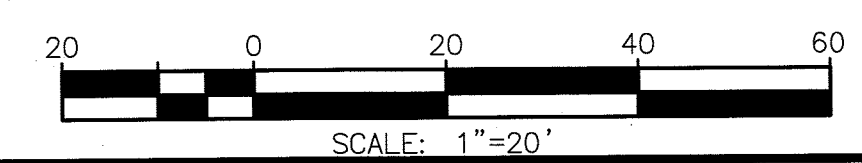


LEGEND NOTES:

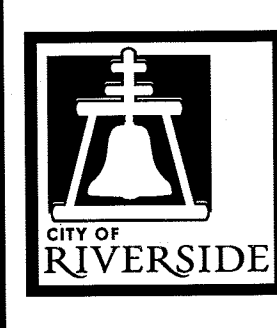
- EXISTING TO REMAIN.
- RELOCATE EXISTING SIGN(S) TO NEW POST (IF APPLICABLE) AS NOTED.
- REMOVE AND SALVAGE SIGN(S) AND/OR POST(S) (IF APPLICABLE) AS NOTED.
- INSTALL PAVEMENT MARKING OR ARROW AS NOTED.
- REMOVE ALL EXISTING CONFLICTING TRAFFIC STRIPING AND MARKINGS AS NOTED, INCLUDING RAISED PAVEMENT MARKERS.
- EXISTING SIGN (ONE POST)
- EXISTING SIGN (ON STREET LIGHT)

CONSTRUCTION NOTES:

- CONTRACTOR SHALL CONSTRUCT (TYPE 332 CABINET) FOUNDATION. FURNISH AND INSTALL MODEL 170ATC-CF CONTROLLER ASSEMBLY IN MODEL 332 ANODIZED ALUMINUM CABINET, COMPLETE WITH DETECTION SHOWN AND AUXILIARY EQUIPMENT WITHIN A TYPE 332 CABINET PER CITY OF RIVERSIDE SPECIFICATIONS.
- CONTRACTOR SHALL FURNISH AND INSTALL ELECTRICAL 1A SERVICE POLE PER CITY OF RIVERSIDE STANDARD DRAWING No. 667. CONTRACTOR SHALL COORDINATE WITH CITY OF RIVERSIDE SIGNAL MAINTENANCE SECTION AT 951-351-6098 TO OBTAIN A BREAKER CAN.
- CONTRACTOR SHALL CONTACT AND COORDINATE WITH ELECTRICAL UTILITY DEPARTMENT AT (951) 826-5452 FOR ELECTRICAL SERVICE A MINIMUM OF SIX WEEKS PRIOR TO TRAFFIC SIGNAL TURN ON.
- FURNISH AND INSTALL ONE (1) GTT MODEL No. 711 (OR CITY-APPROVED EQUAL) EMERGENCY VEHICLE PRE-EMPTION DETECTOR ASSEMBLY (INCLUDING MOUNTING HARDWARE AND CABLE) FOR EACH DIRECTION, OR OPTICOM MODEL No. 722 (DUAL DIRECTION) AS SHOWN ON PLAN. E.V.P.E. SHALL BE MOUNTED ON THE MAST ARM PER DETAIL "C".
- THE CONTRACTOR SHALL INSTALL ACITY FURNISHED TRANSCIEVER. CONTRACTOR SHALL COORDINATE WITH THE CITY OF RIVERSIDE TRAFFIC SECTION AT 951-826-5366.
- INSTALL SIGN AS NOTED.
- CONTRACTOR SHALL CONTACT PUBLIC UTILITIES AT 951-826-5484 TO COORDINATE THE REMOVAL OF SALVAGING OF THE STREET LIGHT. CONTRACTOR FORCES SHALL BE RESPONSIBLE FOR ALL WORK INCLUDING COMPLETE FOUNDATION REMOVAL, FILL AND REPAIR OF ANY CONCRETE AND ELECTRICAL WORK.



Under Ground Service Alert of Southern California
Call: TOLL FREE 1-800 227-2600
TWO WORKING DAYS BEFORE YOU DIG



ENGINEER IN RESPONSIBLE CHARGE
GILBERT M. HERNANDEZ
R.C.E. No. 69170 EXPIRES: 6-30-14
DATE: 9-10-13

MARK	REVISIONS	APPR.	DATE

CITY OF RIVERSIDE, CALIFORNIA
DEPARTMENT OF PUBLIC WORKS

APPROVED BY: [Signature]
ENGINEERING MANAGER
TRAFFIC DIVISION
CONSTRUCTION ADMIN.
PUBLIC UTILITIES

DATE: 10/2/13

TRAFFIC SIGNAL PLAN
LINCOLN AVENUE AND ST LAWRENCE STREET

SCALE: 1" = 20'

X-542
SHEET 1 OF 1
FILE NAME: X542.DWG