

CONDUCTOR TABLE

CONTROL FUNCTION	CONDUCTORS	CONDUCTOR RUNS							
		1	2	3	4	5	6	7	8
VEHICLE & PEDESTRIAN HEADS, PEDESTRIAN PUSH BUTTONS, SPARES & COMMONS	12 WIRE IMSA	1	2	3	4	1	2	3	8
	3 WIRE IMSA	1	2	3	4	1	2	3	8
VIDEO DETECTION	COAXIAL	-	1	1	2	1	1	2	4
	POWER CABLE	-	1	1	2	1	1	2	4
VEHICLE PREEMPTION	#20/4	-	1	1	2	1	1	2	4
I.I.S.N.S.	#12	-	2	2	2	2	2	2	-
LUMINAIRES	#8	-	2	2	2	-	2	2	-
SIGNAL SERVICE	#6	-	-	-	-	-	-	-	2
RADIO	CAT-5E	-	-	-	-	-	-	1	1

- CONDUIT SIZE
- | | | | | | | | |
|----|----|----|----|----|----|----|------|
| 2" | 3" | 3" | 4" | 2" | 3" | 3" | 2-4" |
|----|----|----|----|----|----|----|------|
- SIGNAL SYSTEM SHALL HAVE ALL NEW CABLES, CONDUIT AND CONDUCTORS.
 - SEE SPECIAL PROVISIONS FOR ADDITIONAL INFORMATION ON I.M.S.A. CABLE.

TRAFFIC SIGNAL GENERAL NOTES:

- ALL ITEMS FURNISHED AND ALL WORK TO BE DONE SHALL CONFORM TO THE REQUIREMENTS OF THE STATE OF CALIFORNIA, DEPARTMENT OF TRANSPORTATION (CALTRANS) STANDARD PLANS AND SPECIFICATIONS, DATED MAY 2006; THE CALIFORNIA MANUAL ON UNIFORM TRAFFIC CONTROL DEVICES ADOPTED SEPTEMBER 2014; AND THE SPECIAL PROVISIONS.
- UTILITIES SHOWN ON THE PLAN ARE CORRECT AND ACCURATE TO THE EXTENT OF AVAILABLE RECORDS. THE CONTRACTOR IS REQUIRED TO TAKE STEPS TO ASCERTAIN THE EXACT LOCATION OF ALL KNOWN SUBSTRUCTURES PRIOR TO DOING WORK THAT MAY DAMAGE OR INTERFERE WITH SUCH FACILITIES ("UNDERGROUND SERVICE ALERT" (800) 227-2600)
- THE CONTRACTOR SHALL OBTAIN ALL NECESSARY PERMITS TO NOTIFY ALL AFFECTED AGENCIES AND THE RIVERSIDE UTILITY COMPANIES A MINIMUM OF 48 HOURS PRIOR TO START OF CONSTRUCTION.
- CONDUCTOR SCHEDULE IS FURNISHED AS AN INSTALLATION GUIDELINE ONLY. IT SHALL BE THE CONTRACTOR'S RESPONSIBILITY TO PROVIDE THE CORRECT CONDUCTORS REQUIRED FOR THE INTENDED OPERATION.
- CONDUIT BETWEEN ADJOINING PULL BOXES SHALL BE 2" UNLESS SHOWN OTHERWISE. ALL CONDUIT AND FITTINGS SHALL BE RIGID METAL, UNLESS SHOWN OTHERWISE (BURIED IN A MINIMUM OF 30" OF COVER IN THE STREET AND PARKWAY).
- UNDERGROUND SIGNAL CONDUCTORS SHALL NOT BE SPLICED.
- PULL BOXES SHALL BE No. 6 WITH FIBERLITE LIDS LABELED "TRAFFIC" UNLESS OTHERWISE NOTED ON THE PLAN.
- PULL BOXES SHALL NOT BE LOCATED IN OR WITHIN 1' OF ANY CURB ACCESS RAMP OR DRIVEWAY.
- THE CONTRACTOR SHALL VERIFY WITH THE ENGINEER THE PRECISE FIELD LOCATIONS OF ALL TRAFFIC SIGNAL EQUIPMENT PRIOR TO THE INSTALLATION.
- ALL LANDSCAPING WHICH IS DAMAGED BY CONSTRUCTION ACTIVITIES SHALL BE REPAIRED OR REPLACED TO THE SATISFACTION OF THE CITY AND THE PROPERTY OWNER.
- NEW MAST ARM MOUNTED SIGN SHALL BE FABRICATED WITH 3M DG3 (ASTM TYPE XI) REFLECTIVE SHEETING OR APPROVED EQUAL. MINIMUM SIGN SIZE SHALL BE 30" x 30".
- VEHICLE HEADS SHALL BE 12" LED TYPE. THE HOUSING, BACKPLATES AND VISORS SHALL BE METAL.
- INTERNALLY ILLUMINATED STREET NAME SIGNS (ISNS) SHALL BE TYPE "A" WITH L.E.D. LIGHTING SYSTEMS. STREET NAME LEGENDS SHALL BE UPPER/LOWER CASE AND SHALL INCLUDE BLOCK NUMBERS AND ROAD NAME SUFFIXES.
- ALL CONTRACTORS WORKING ON OR AROUND THE CITY OF RIVERSIDE'S UNDERGROUND ELECTRICAL FACILITIES MUST HAVE THE PROPERLY QUALIFIED PERSONNEL AND EQUIPMENT TO PERFORM THE SPECIFIED WORK. THE CONTRACTOR WILL BE SOLELY RESPONSIBLE TO ESTABLISH AND MAINTAIN A SAFE WORKING ENVIRONMENT INCLUDING, BUT NOT LIMITED TO, WORK AROUND ENERGIZED HIGH VOLTAGE FACILITIES, GAS TESTING OF CONFINED SPACES, TRAFFIC AND PROTECTION. EVERY ENTRY INTO A PUBLIC UTILITIES HIGH VOLTAGE STRUCTURE WILL REQUIRE THE PRESENCE OF A QUALIFIED ELECTRICAL WORKER IN ACCORDANCE WITH OSHA. ALL DEVELOPERS AND CONTRACTORS ARE REQUIRED TO SUBMIT REQUIRED DOCUMENTATION AND FOLLOW REQUIRED PROCEDURES. COPIES OF THE POLICY AND DOCUMENTS MAY BE OBTAINED AT 3901 ORANGE ST. RIVERSIDE, CA OR AT WWW.RIVERSIDEPUBLICUTILITIES.COM

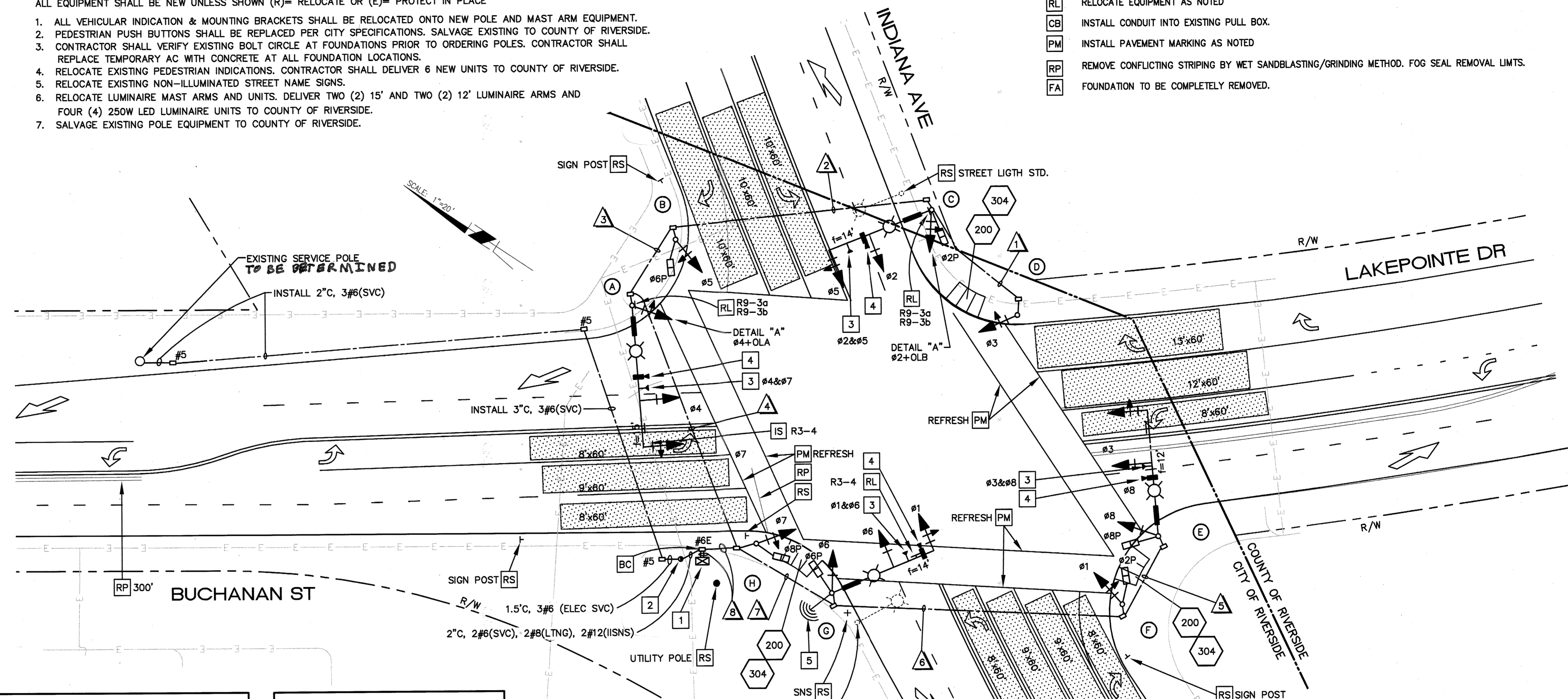
EQUIPMENT SCHEDULE

No.	TYPE	STANDARD HGT.	SIG. M.A.	LUM. M.A.	LUMINAIRE L.E.D.	ISNS LEGEND	SIGNAL MOUNTING			PPB PHASE	REMARKS	
							VEHICLE	PED	AUDIBLE			
A	26-4-100	30'	45'	15'(RL)	250W(RL)	Indiana (RL)	2-MAS (RL)	SV-1-T (RL)			#6	NEW POLE AND MAST ARM
B	1A	10'	-	-	-	-	-	TV-1-T (RL)	SP-1-T (RL)	((P))		NEW 1A POLE (SPUN ALUMINUM)
C	24-4-100	30'	35'	12'(RL)	250W(RL)	Lakepointe (RL)	2-MAS (RL)	SV-1-T (RL)	SP-1-T (RL)	((P))		NEW POLE AND MAST ARM
D	1A	10'	-	-	-	-	-	TV-1-T (RL)	SP-1-T (RL)		#2	NEW 1A POLE (SPUN ALUMINUM)
E	26-4-100	30'	40'	15'(RL)	250W(RL)	Indiana (RL)	2-MAS (RL)	SV-1-T (RL)	SP-1-T (RL)	((C))	#2	NEW POLE AND MAST ARM
F	1A	10'	-	-	-	-	-	TV-1-T (RL)	SP-1-T (RL)	((P))	#8	NEW 1A POLE (SPUN ALUMINUM)
G	24-4-100	30'	35'	12'(RL)	250W(RL)	Buchanan (RL)	2-MAS (RL)	SV-1-T (RL)	SP-1-T (RL)	((P))	#8	NEW POLE AND MAST ARM
H	1A	10'	-	-	-	-	-	TV-1-T (RL)	SP-1-T (RL)	((C))	#6	NEW 1A POLE (SPUN ALUMINUM)

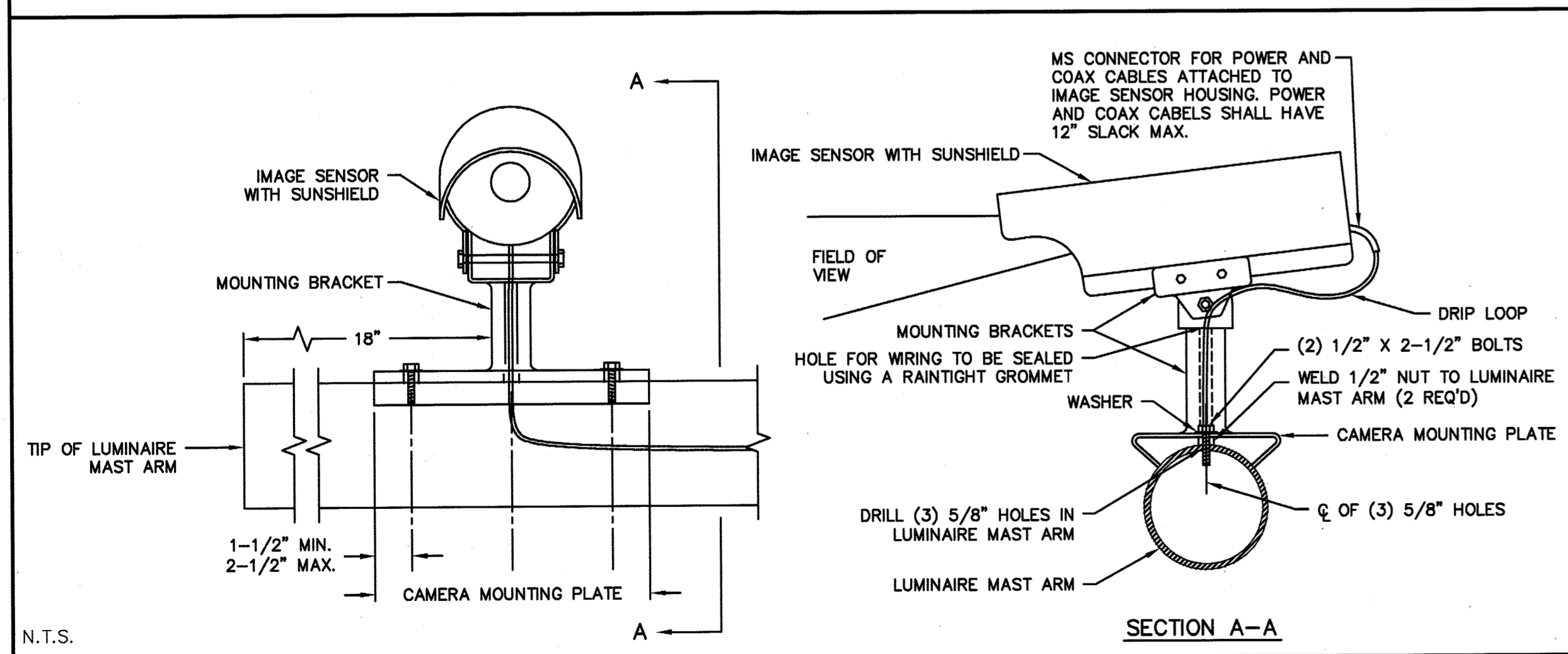
- PEDESTRIAN AUDIBLES: C=CUCKOO (NORTH/SOUTH), P=PEEP PEEP (EAST/WEST)
 ALL EQUIPMENT SHALL BE NEW UNLESS SHOWN (R)= RELOCATE OR (E)= PROTECT IN PLACE
- ALL VEHICULAR INDICATION & MOUNTING BRACKETS SHALL BE RELOCATED ONTO NEW POLE AND MAST ARM EQUIPMENT.
 - PEDESTRIAN PUSH BUTTONS SHALL BE REPLACED PER CITY SPECIFICATIONS. SALVAGE EXISTING TO COUNTY OF RIVERSIDE.
 - CONTRACTOR SHALL VERIFY EXISTING BOLT CIRCLE AT FOUNDATIONS PRIOR TO ORDERING POLES. CONTRACTOR SHALL REPLACE TEMPORARY AC WITH CONCRETE AT ALL FOUNDATION LOCATIONS.
 - RELOCATE EXISTING PEDESTRIAN INDICATIONS. CONTRACTOR SHALL DELIVER 6 NEW UNITS TO COUNTY OF RIVERSIDE.
 - RELOCATE EXISTING NON-ILLUMINATED STREET NAME SIGNS.
 - RELOCATE LUMINAIRE MAST ARMS AND UNITS. DELIVER TWO (2) 15' AND TWO (2) 12' LUMINAIRE ARMS AND FOUR (4) 250W LED LUMINAIRE UNITS TO COUNTY OF RIVERSIDE.
 - SALVAGE EXISTING POLE EQUIPMENT TO COUNTY OF RIVERSIDE.

CONSTRUCTION NOTES:

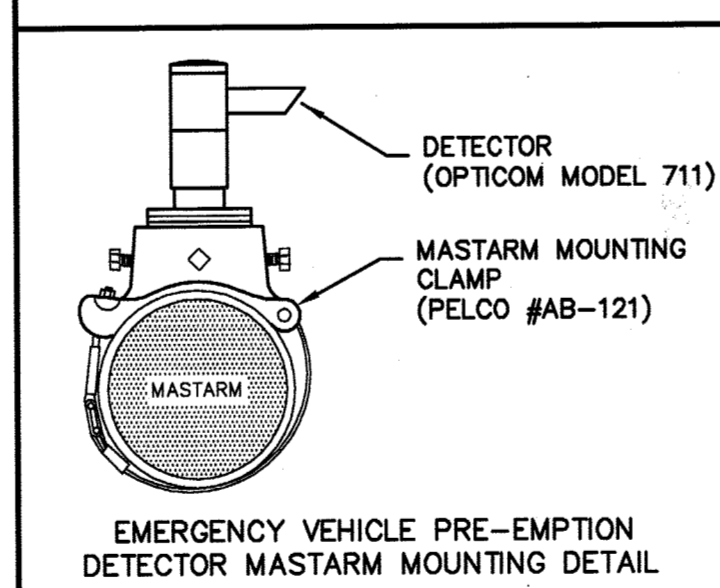
- EXISTING 332 CABINET. CONTRACTOR SHALL FURNISH AND INSTALL MODEL 2070 CONTROLLER ASSEMBLY AND SALVAGE EXISTING CONTROLLER TO COUNTY OF RIVERSIDE. INSTALL RACK MOUNTED VIDEO DETECTION MONITOR PER CITY SPECIFICATIONS.
 - INSTALL ELECTRICAL SERVICE PER CITY OF RIVERSIDE STANDARD DRAWING No. 667. CONTRACTOR SHALL COORDINATE WITH CITY OF RIVERSIDE ELECTRICAL UTILITY DEPARTMENT AT (951) 826-5452 FOR ELECTRICAL SERVICE A MINIMUM OF SIX (6) WEEKS PRIOR TO TRAFFIC SIGNAL TURN ON.
 - RELOCATE EMERGENCY VEHICLE PRE-EMPTION EQUIPMENT. CONTRACTOR SHALL PROVIDE 4 GTT MODEL No. 711 UNITS AND 4 EVP DETECTOR CARDS TO COUNTY OF RIVERSIDE.
 - RELOCATE VIDEO DETECTION CAMERA SYSTEM AND CONFIGURE VEHICLE DETECTION ZONES. CAMERAS SHALL BE PROGRAMMED BY THE CONTRACTOR. SEE SPECIAL PROVISIONS FOR SPECIFICATIONS.
 - THE CONTRACTOR SHALL INSTALL TRANSCEIVER PER CITY SPECIFICATIONS. CONTRACTOR SHALL COORDINATE WITH THE CITY OF RIVERSIDE TRAFFIC SIGNAL SECTION AT 951-351-6098.
- [RS] REMOVE AND SALVAGE TO COUNTY OF RIVERSIDE.
 [RL] RELOCATE EQUIPMENT AS NOTED
 [CB] INSTALL CONDUIT INTO EXISTING PULL BOX.
 [PM] INSTALL PAVEMENT MARKING AS NOTED
 [RP] REMOVE CONFLICTING STRIPING BY WET SANDBLASTING/GRINDING METHOD. FOG SEAL REMOVAL LIMITS.
 [FA] FOUNDATION TO BE COMPLETELY REMOVED.



VIDEO DETECTION MAST ARM MOUNTING DETAIL

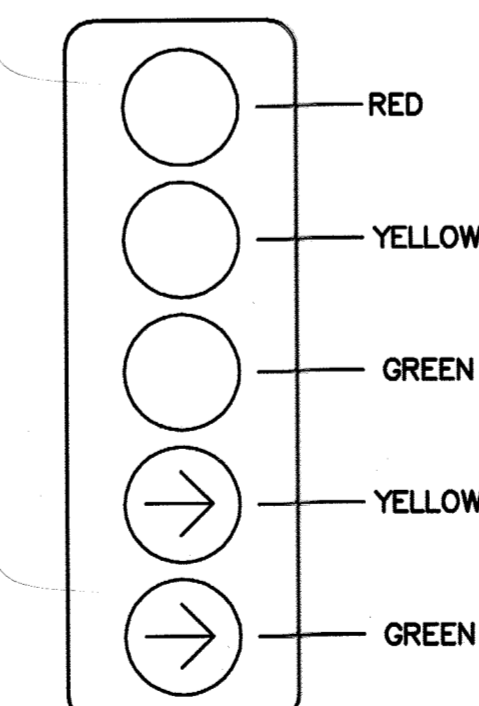


EVP MOUNTING DETAIL



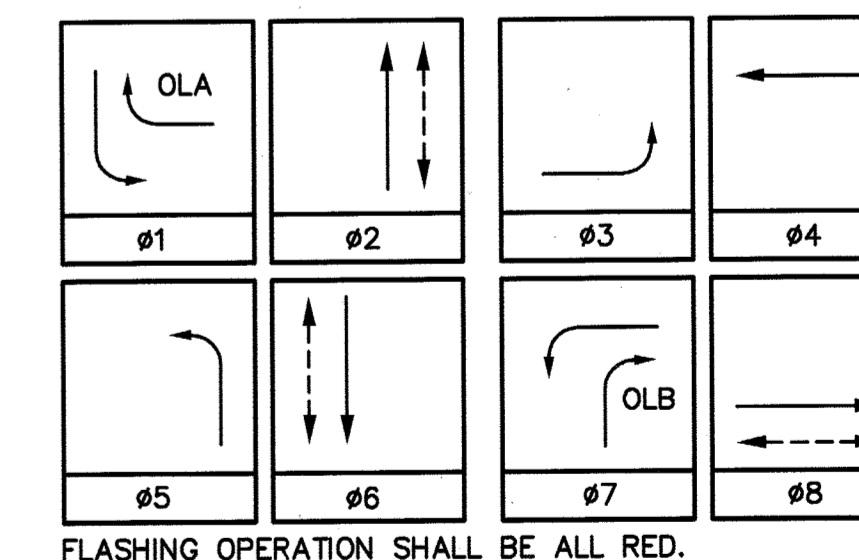
RIVERSIDE COUNTY TRANSPORTATION

APPROVED BY: _____
 COUNTY TRAFFIC ENGINEER
 DATE: _____



DETAIL "A"

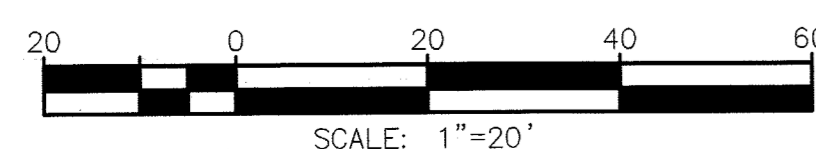
PHASE DIAGRAM



FLASHING OPERATION SHALL BE ALL RED.

CONSTRUCTION NOTES CONT.:

- 200 CONSTRUCT CURB AND GUTTER PER CITY OF RIVERSIDE STANDARD DRAWING NO. 200.
- 304 CONSTRUCT WHEELCHAIR RAMP PER CITY OF RIVERSIDE STANDARD DRAWING NO. 304.



Under Ground Service Alert of Southern California
 Call: TOLL FREE 1-800-227-2600
 TWO WORKING DAYS BEFORE YOU DIG

ENGINEER IN RESPONSIBLE CHARGE
 GILBERT M. HERNANDEZ
 R.C.E. No. 69170 EXPIRES: 6-30-18
 DATE: 10-21-15

DESIGNED BY: GMH DRAWN BY: GMH CHECKED BY: GMH

CITY OF RIVERSIDE, CALIFORNIA
 DEPARTMENT OF PUBLIC WORKS

APPROVED BY: _____
 ENGINEERING MANAGER
 TRAFFIC DIVISION
 CONSTRUCTION ADMIN. DC
 PUBLIC UTILITIES

DATE: 10-22-15

TRAFFIC SIGNAL PLAN
 BUCHANAN ST/LAKEPOINTE DR
 AT INDIANA AVENUE

SCALE: 1" = 20'

X-545A
 SHEET 1 OF 1
 FILE NAME: X545A.DWG