

TRAFFIC SIGNAL GENERAL NOTES:

- ALL ITEMS FURNISHED AND ALL WORK TO BE DONE SHALL CONFORM TO THE REQUIREMENTS OF: THE STATE OF CALIFORNIA, DEPARTMENT OF TRANSPORTATION (CALTRANS) STANDARD PLANS AND SPECIFICATIONS, DATED 2015; THE CALIFORNIA MANUAL ON UNIFORM TRAFFIC CONTROL DEVICES ADOPTED 2014; AND SPECIAL PROVISIONS.
- UTILITIES SHOWN ON THE PLAN ARE CORRECT AND ACCURATE TO THE EXTENT OF AVAILABLE RECORDS. THE CONTRACTOR IS REQUIRED TO TAKE STEPS TO ASCERTAIN THE EXACT LOCATION OF ALL KNOWN SUBSTRUCTURES PRIOR TO DOING WORK THAT MAY DAMAGE OR INTERFERE WITH SUCH FACILITIES ("UNDERGROUND SERVICE ALERT" (800) 227-2600).
- THE CONTRACTOR SHALL OBTAIN ALL NECESSARY PERMITS TO NOTIFY ALL AFFECTED AGENCIES AND THE RIVERSIDE UTILITY COMPANIES A MINIMUM OF 48 HOURS PRIOR TO START OF CONSTRUCTION.
- UNLESS SHOWN OTHERWISE, INDUCTIVE LOOPS SHALL BE MODIFIED TYPE "D" & TYPE "E" WITH 10', 15' AND 30' SPACING IN THE DIRECTION OF TRAVEL. NECESSARY STRIPING SHALL BE LOCATED PRIOR TO POSITIONING LOOPS. LOOPS SHALL BE SEALED WITH HOT MELT SEALANT. SEE DETAIL.
- CONDUCTOR SCHEDULE IS FURNISHED AS AN INSTALLATION GUIDELINE ONLY. IT SHALL BE THE CONTRACTOR'S RESPONSIBILITY TO PROVIDE THE CORRECT CONDUCTORS REQUIRED FOR THE INTENDED OPERATION.
- CONDUIT BETWEEN ADJOINING PULL BOXES SHALL BE 2" UNLESS SHOWN OTHERWISE. ALL CONDUIT AND FITTINGS SHALL BE RIGID METAL, UNLESS OTHERWISE SHOWN (BURIED IN A MINIMUM OF 30" OF COVER IN THE STREET AND PARKWAY).
- TRAFFIC SIGNAL INTERCONNECT (SIC) SHALL BE 2" UNLESS SHOWN OTHERWISE. BURIED IN A MINIMUM OF 30" OF COVER IN THE STREET AND PARKWAY. NO. 6 PULLBOXES WITH LIDS LABELED "COMMUNICATIONS", SHALL BE SPACED AT 400' AND THE MAXIMUM SIC BENDING RADIUS SHALL NOT EXCEED 45". SIC CONDUIT SHALL ONLY INCLUDE SIGNAL INTERCONNECT CONDUCTORS.
- UNDERGROUND SIGNAL CONDUCTORS SHALL NOT BE SPLICED.
- PULL BOXES SHALL BE NO. 6 WITH FIBERLITE LIDS LABELED "TRAFFIC SIGNAL" UNLESS OTHERWISE NOTED ON THE PLAN.
- PULL BOXES SHALL NOT BE LOCATED IN OR WITHIN 1' OF ANY CURB ACCESS RAMP OR DRIVEWAY.
- THE CONTRACTOR SHALL VERIFY WITH THE ENGINEER THE PRECISE FIELD LOCATIONS OF ALL TRAFFIC SIGNAL EQUIPMENT PRIOR TO THE INSTALLATION.
- ALL LANDSCAPING WHICH IS DAMAGED BY CONSTRUCTION ACTIVITIES SHALL BE REPAIRED OR REPLACED TO THE SATISFACTION OF THE CITY AND THE PROPERTY OWNER.
- NEW MAST ARM MOUNTED SIGN SHALL BE FABRICATED WITH 3M DIAMOND GRADE DC3 REFLECTIVE SHEETING (ASTM TYPE XI) OR APPROVED EQUAL. MINIMUM SIGN SIZE SHALL BE 30" X 30".
- VEHICLE HEADS SHALL BE 12" LED TYPE. THE HOUSING, BACKPLATES AND VISORS SHALL BE METAL.
- INTERNALLY ILLUMINATED STREET NAME SIGNS (IISNS) SHALL BE TYPE A. STREET NAME LEGENDS SHALL BE UPPER/LOWER CASE AND SHALL INCLUDE BLOCK NUMBERS AND ROAD NAME SUFFIXES.
- SALVAGED TRAFFIC SIGNAL EQUIPMENT SHALL BE DELIVERED TO THE CITY OF RIVERSIDE TRAFFIC SIGNAL MAINTENANCE YARD.
- DAMAGED SIDEWALK CONCRETE SHALL BE REPLACED PER CITY OF RIVERSIDE STANDARD.
- THE CONTRACTOR SHALL REMOVE ALL UNUSED PULL BOXES AND RE-PAVE SURROUNDING AREA TO MATCH EXISTING OR PROPOSED GRADE. ALL UNUSED CONDUIT SHALL BE ABANDONED AND CAPPED ONCE UNUSED CONDUCTORS ARE REMOVED.
- IT SHALL BE THE RESPONSIBILITY OF THE CONTRACTOR TO FURNISH AND INSTALL ANY ADDITIONAL LOAD SWITCHES AND/OR DETECTOR CARDS, IF NECESSARY, FOR THE PROPOSED OPERATION.
- CONTRACTORS WORKING ON OR AROUND THE CITY OF RIVERSIDE'S UNDERGROUND ELECTRICAL FACILITIES MUST HAVE THE PROPERLY QUALIFIED PERSONNEL AND EQUIPMENT TO PERFORM THE SPECIFIED WORK. THE CONTRACTOR WILL BE SOLELY RESPONSIBLE TO ESTABLISH AND MAINTAIN A SAFE WORKING ENVIRONMENT INCLUDING, BUT NOT LIMITED TO WORK AROUND ENERGIZED HIGH VOLTAGE FACILITIES, GAS TESTING OF CONFINED SPACES, TRAFFIC AND PROTECTION.
- EVERY ENTRY BY ANY PERSONNEL INTO A PUBLIC UTILITIES HIGH VOLTAGE STRUCTURE WILL REQUIRE THE PRESENCE OF A QUALIFIED ELECTRICAL WORKER IN ACCORDANCE WITH cal/OSHA. ALL DEVELOPERS AND CONTRACTORS ARE REQUIRED TO SUBMIT REQUIRED DOCUMENTATION AND FOLLOW REQUIRED PROCEDURES. COPIES OF THE POLICY AND DOCUMENTS MAY BE OBTAINED AT 3901 ORANGE ST. RIVERSIDE, CA OR AT www.RIVERSIDEPUBLICUTILITIES.COM

CONSTRUCTION NOTES (THIS SHEET):

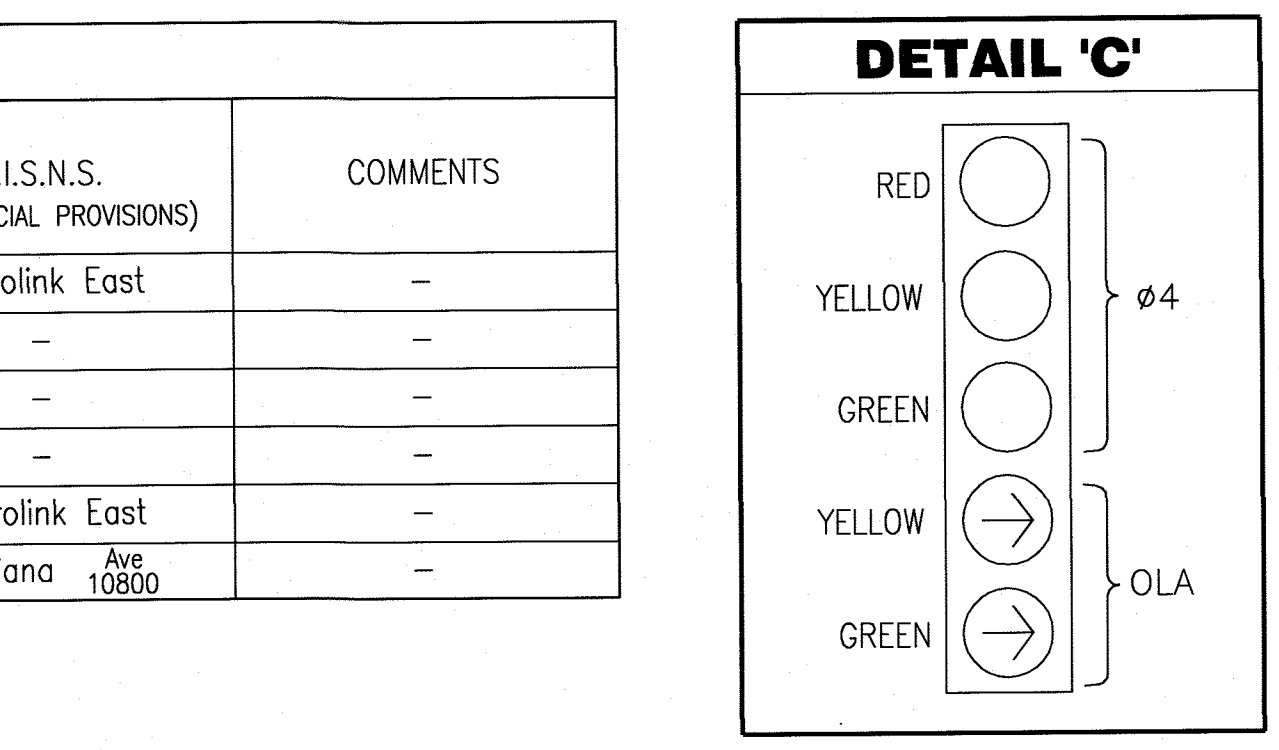
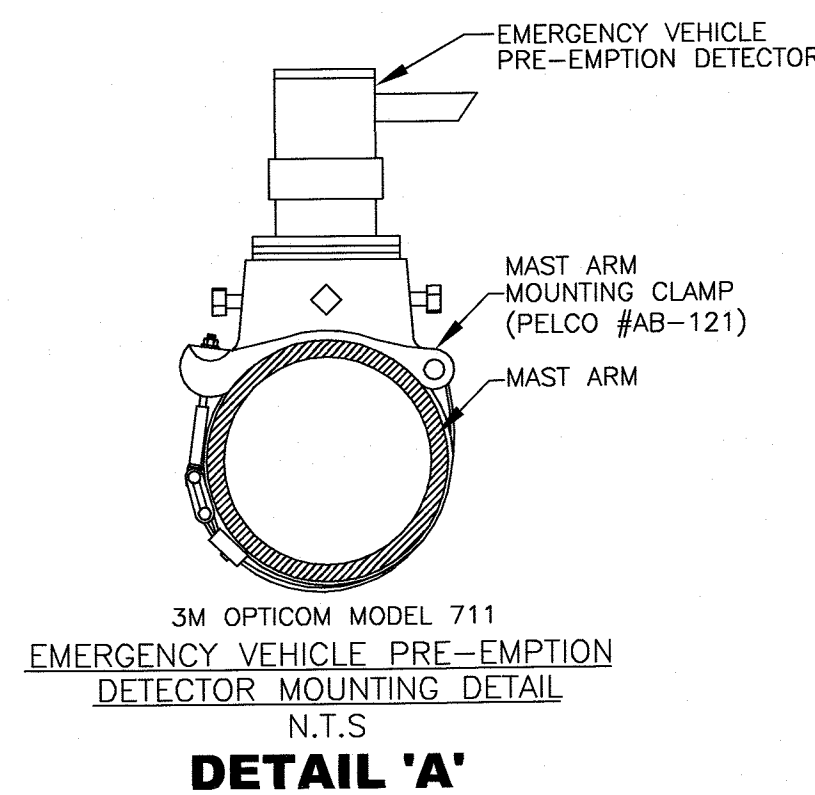
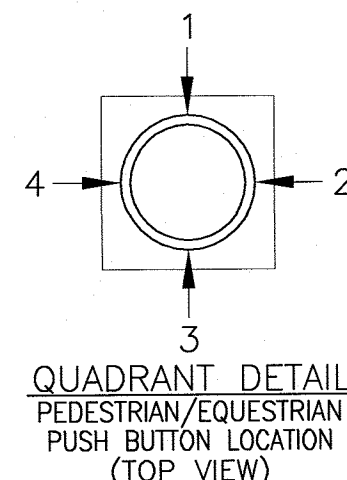
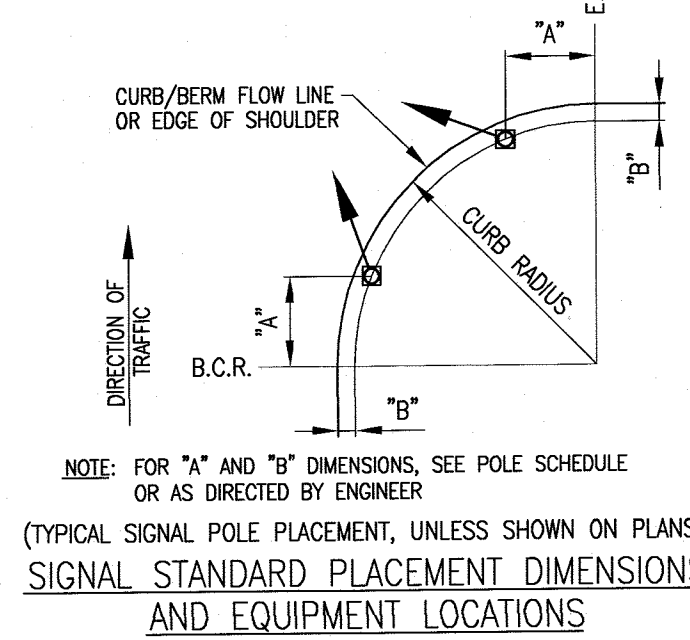
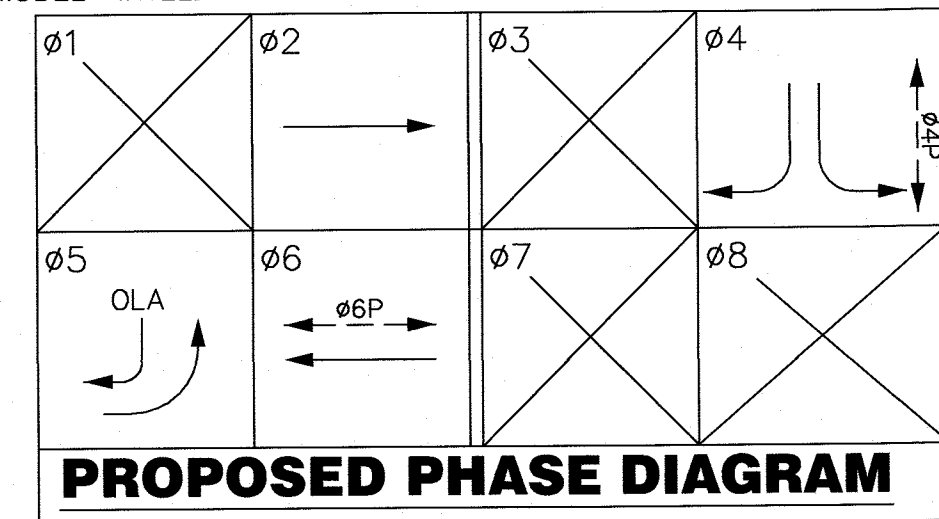
- CONSTRUCT (TYPE 332 CABINET) FOUNDATION. FURNISH AND INSTALL MODEL 2070 1-C CONTROLLER ASSEMBLY IN MODEL 332 ALUMINUM CABINET, COMPLETE WITH DETECTION SHOWN, BATTERY BACK-UP SYSTEM, AND AUXILIARY EQUIPMENT WITHIN TYPE 332 CABINET PER CITY OF RIVERSIDE SPECIFICATIONS. CONTRACTOR SHALL FURNISH AND INSTALL A RACK MOUNTED 17-INCH FLIP-UP LCD COLOR VIDEO ITERIS MONITOR PER THE SPECIAL PROVISIONS.
- INSTALL ELECTRICAL SERVICE PER CITY OF RIVERSIDE STANDARD DRAWING No. 667. CONTRACTOR SHALL COORDINATE WITH CITY OF RIVERSIDE ELECTRICAL UTILITY DEPARTMENT AT (951) 826-5452 FOR ELECTRICAL SERVICE A MINIMUM OF THREE WEEKS PRIOR TO TRAFFIC SIGNAL TURN ON.
- INSTALL VIDEO DETECTION CAMERA ON LUMINAIRE MAST ARM PER DETAIL AND CITY SPECIFICATIONS. CAMERAS SHALL BE PROGRAMMED BY THE VIDEO DETECTION CAMERA REPRESENTATIVE.
- INSTALL CIT MODEL No. 711 (OR CITY-APPROVED EQUAL) EMERGENCY VEHICLE PRE-EMPTION DETECTOR ASSEMBLY (INCLUDING MOUNTING HARDWARE AND CABLE) FOR EACH DIRECTION. E.V.P.E. SHALL BE MOUNTED ON THE MAST ARM PER DETAIL 'A'.
- INSTALL MAST ARM MOUNTED SIGN AS SHOWN.
- INSTALL POST MOUNTED SIGN AS SHOWN.
- INSTALL 24-STRAND SINGLE MODE FIBER OPTIC CABLE TO CONTROLLER AS SHOWN ON PLAN WITHIN 2" CONDUIT. INSTALL #5 PULLBOXES AT 400' MAXIMUM INTERVALS. INSTALL FIBER OPTIC PATCH PANEL AT BOTH TRAFFIC SIGNAL CONTROLLER CABINETS AND AN 8-PORT ETHERNET SWITCH AT EACH CABINET. SEE INTERCONNECT DETAIL "B".
- EXISTING LUMINAIRE AND ITS FOUNDATION TO BE REMOVED BY CONTRACTOR AND COORDINATED WITH RIVERSIDE PUBLIC UTILITIES.
- EXISTING VENT TO BE RELOCATED BY CONTRACTOR AND COORDINATED WITH RIVERSIDE PUBLIC UTILITIES.
- RELOCATE TREE (IF NEEDED) 5' NORTHEAST.

CALTRANS STANDARD NOTES:

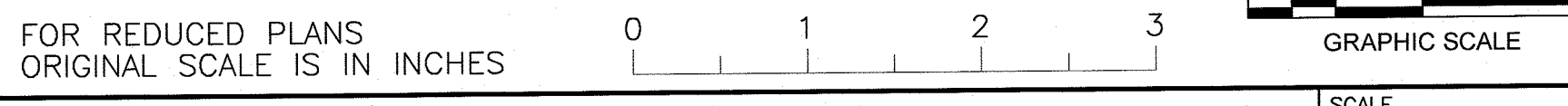
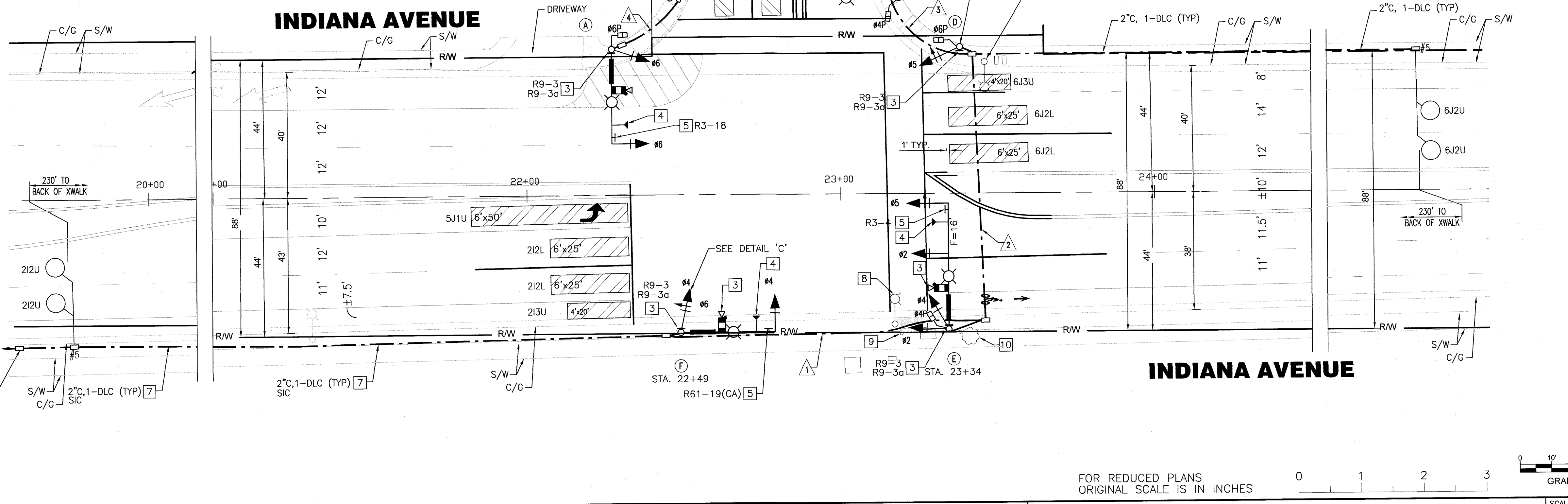
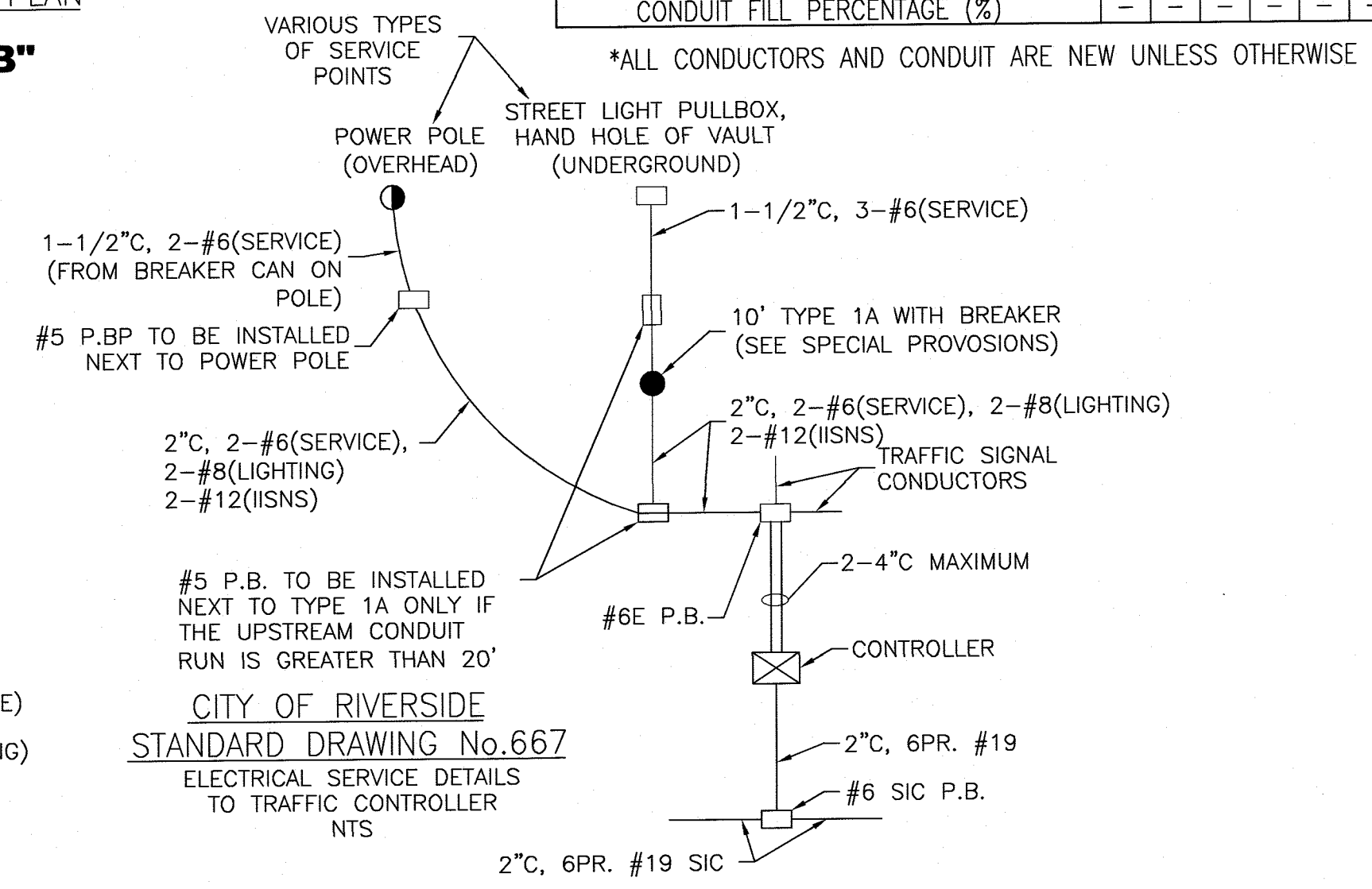
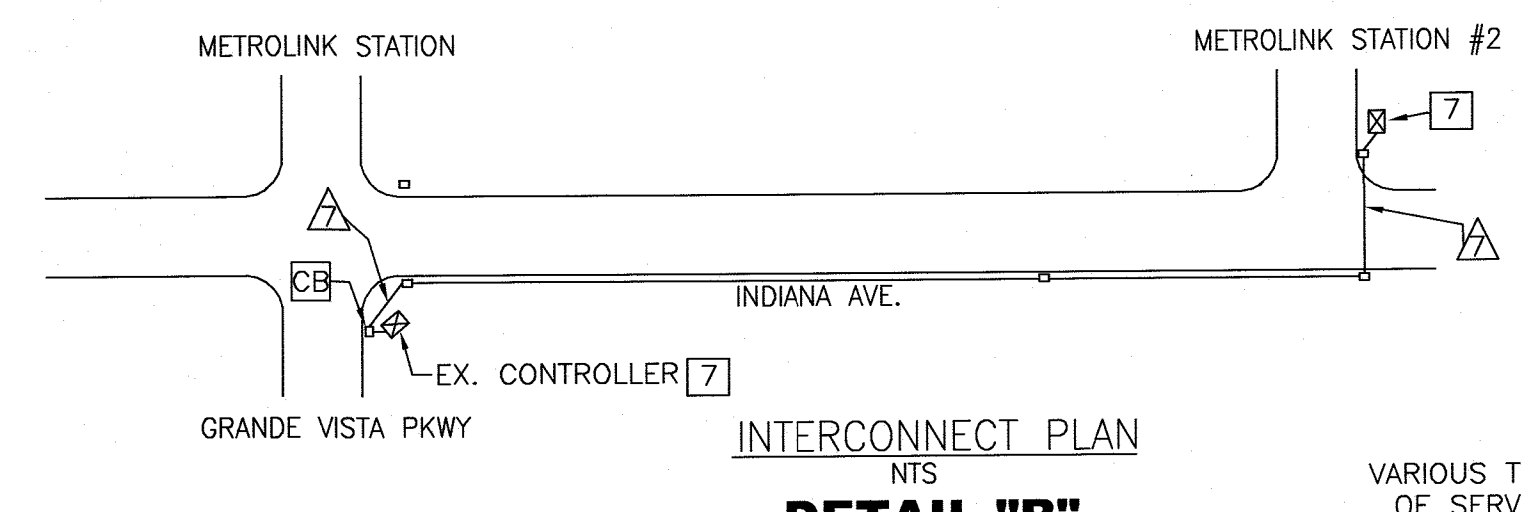
- AB ABANDON, IF APPLIED TO CONDUIT, REMOVE CONDUCTORS.
- BC INTERCEPT EXISTING CONDUIT RUN WITH NEW PULL BOX.
- CE INSTALL CONDUIT INTO EXISTING PULL BOX
- CD EQUIPMENT OR MATERIAL TO BE REMOVED AND BECOME THE PROPERTY OF THE CONTRACTOR.
- RL RELOCATE EXISTING EQUIPMENT.
- RS REMOVE AND SALVAGE EXISTING EQUIPMENT TO CITY OF RIVERSIDE.
- SC SPLICE NEW CONDUCTORS TO EXISTING CONDUCTORS.

POLE AND EQUIPMENT SCHEDULE														
CONDITION NO.	STANDARDS				VEH. SIGNAL MTG.		PED. SIG.		P.P.B.		I.I.S.N.S. (SEE SPECIAL PROVISIONS)	COMMENTS		
	TYPE	HEIGHT	SIGNAL M.A.	LUMIN. M.A.	MAST ARM	POLE	MTG.	QUAD	A	B				
(N)(A)	19-4-100	30'	30'	15'	MAS	SV-1-T	SP-1-T	-	-	8'	5.5'	250W*	Metrolink East	-
(N)(B)	1-A	10'	-	-	-	TV-1-T	-	6	3	14.5'	5.5'	-	-	-
(N)(C)	15TS	30'	-	15'	-	-	SP-1-T	6	3	14.5'	5.5'	250W*	-	-
(N)(D)	1-A	10'	-	15'	-	SV-1-T	SP-1-T	4	4	11'	3'	250W*	-	-
(N)(E)	26-4-100	30'	40'	15'	2-MAS	SV-2-TA	SP-1-T	4	4	(AS)	4'	250W*	Metrolink East	-
(N)(F)	19-4-100	30'	30'	15'	MAS	SV-1-T	-	-	-	(AS)	3'	250W*	Indiana Ave 10800	-

■ ALL EQUIPMENT IS NEW UNLESS OTHERWISE NOTED.
 * LED LUMINAIRE SHALL BE 250W HPS EQUIVALENT. CONTRACTOR SHALL POTHOLE POLE LOCATIONS PRIOR TO ORDERING POLES.
 ▲ PEDESTRIAN PUSH BUTTONS SHALL BE POLARA 2-WIRE PEDESTRIAN ACCESSIBLE SIGNALS (APS), MODEL "INTELLIGENT NAVIGATOR"



CONDUCTOR SCHEDULE										
AWG SIZE OR CABLE TYPE	POLE OR CIRCUIT	RUN NUMBER								
		(1)	(2)	(3)	(4)	(5)	(6)			
12 CONDUCTOR	POLE - A	-	-	-	-	-	-			
	B	-	-	-	-	-	-			
	C	-	-	-	-	-	-			
	D	-	-	-	-	-	-			
	E	-	-	-	-	-	-			
	F	-	-	-	-	-	-			
3 CONDUCTOR	TOTAL	2	4	5	2	1	2			
	I.I.S.N.S.	2	2	2	2	2	-			
	LUMINAIRES	2	2	2	2	2	-			
	SIGNAL SERVICE	-	-	-	-	-	-			
	Ø1	-	-	-	-	-	-			
	Ø2	1	1	1	1	1	1			
DLC (TYPE B)	Ø3	-	-	-	-	-	-			
	Ø4	-	-	-	-	-	-			
	Ø5	-	-	-	-	-	-			
	Ø6	-	-	-	-	-	-			
	Ø7	-	-	-	-	-	-			
	Ø8	-	-	-	-	-	-			
TOTAL	1	1	2	1	2	4				
VEHICLE PREEMPTION #20/3	1	2	2	1	1	3				
24-STRAND SMFOC	1	1	1	-	-	1				
CAMERA CABLE VIDEO DETECTION	1	2	2	1	1	3				
CONDUIT SIZE	3"	3"	3"	3"	3"	2-4"				
CONDUIT FILL PERCENTAGE (%)	-	-	-	-	-	-				



REV.	DATE	DESCRIPTION	BY	APP.

Information confidential: all plans, drawings, specifications, and/or information furnished hereafter shall remain the property of the Riverside County Transportation Commission; shall be held confidential; and shall not be used for any purpose not provided for in agreements with the Riverside County Transportation Commission.

DESIGNED BY: CS, JDLG
 DRAWN BY: RW
 CHECKED BY: RJD, JGD
 IN CHARGE: JGD
 DATE: May 18, 2018

CITY OF RIVERSIDE, CALIFORNIA DEPARTMENT OF PUBLIC WORKS
 APPROVED BY: [Signature]
 ENGINEERING MANAGER: [Signature]
 PRINCIPAL ENGINEER: [Signature]
 TRAFFIC DIVISION: [Signature]
 CONSTRUCTION ADMIN.: [Signature]
 PUBLIC UTILITIES: [Signature]
 DATE: 6/12/2018

WSP USA INC. 451 E. VANDERBILT WAY SUITE 200 SAN BERNARDINO, CA 92408 TEL: +1.909.888.1108 FAX: +1.909.889.1884
 R.C.E. No. 49004 Exp. 9-30-18

RIVERSIDE COUNTY TRANSPORTATION COMMISSION

RCTC

RIVERSIDE LA SIERRA METROLINK STATION PARKING LOT EXPANSION

TRAFFIC SIGNAL PLAN

SCALE: 1" = 20'

PW17-0516

X-556

SHEET 21 OF 61 SHEETS

FILE NAME: T:\1223-RCTC-RoadOperationsSupport\CADD\CTO-15_LaSierraParkingLotExpansion\1223-RCTC-SPI-1-TRAFFIC SIGNAL.dwg DATE: Friday, May 18, 2018 - 11:31am ehobbs@rcdm.com