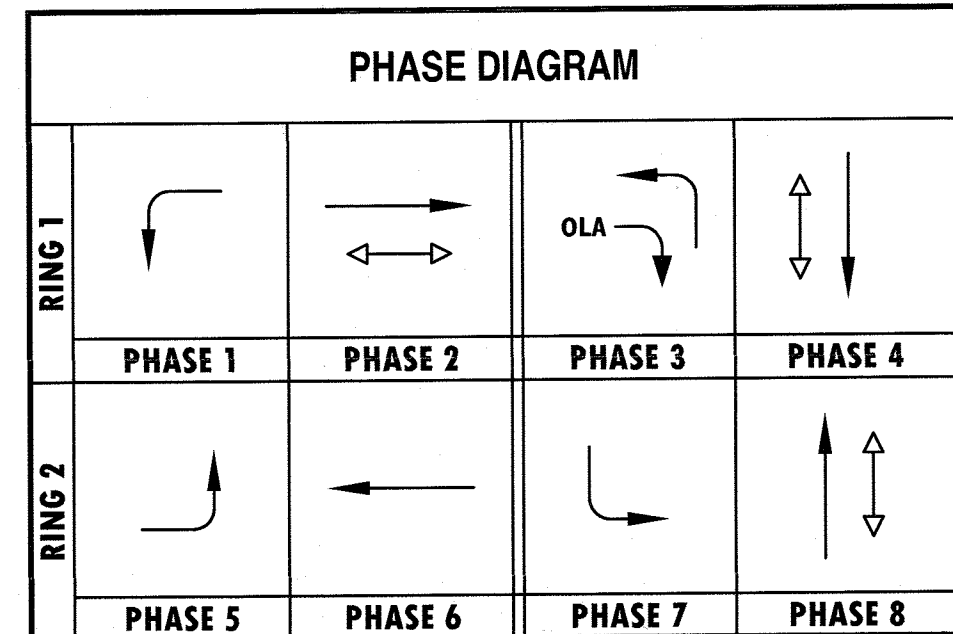


POLE AND EQUIPMENT SCHEDULE

NO.	TYPE	STANDARDS			VEH. SIG. MTG.		PED. SIG.	P.P.B.	L.E.D.	I.I.S.N.S.	NOTES	
		HEIGHT	SIG. M.A.	LUM. M.A.	MAST ARM	POLE						
(A)	26-4-100	30'	40'	15'	2 MAS	SV-1-T	SP-1-T	2	N	250W	Krameria AVE 19900	6 7 F=16'
(B)	1-A	10'	-	-	-	TV-1-T	SP-1-T	4	E	-	-	6
(C)	26-4-100	30'	40'	15'	MAS	SV-1-T	-	4	E	250W	Barton ST 9000	6 7 F=15'
(D)	1-A	10'	-	-	-	TV-1-T	SP-1-T	-	-	-	-	6
(E)	26-4-100	30'	40'	15'	2 MAS	SV-1-T	SP-1-T	-	-	250W	Krameria AVE 20000	6 7 F=16'
(F)	1-A	10'	-	-	-	TV-1-T	-	8	W	-	-	6
(G)	19-4-100	30'	25'	15'	MAS	SV-1-T	SP-1-T	8	W	250W	Barton ST 9100	6 7 F=10'
(H)	1-A	10'	-	-	-	TV-1-T	SP-1-T	2	N	-	-	6

CONSTRUCTION NOTES:
 I.I.S.N.S. - EDGE LIT L.E.D. ILLUMINATED STREET NAME SIGN.
 P.P.B. - PEDESTRIAN PUSH BUTTON
 ALL EQUIPMENT IS NEW.

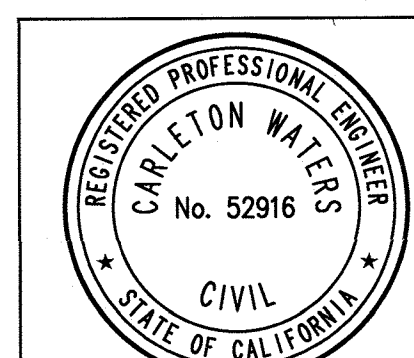
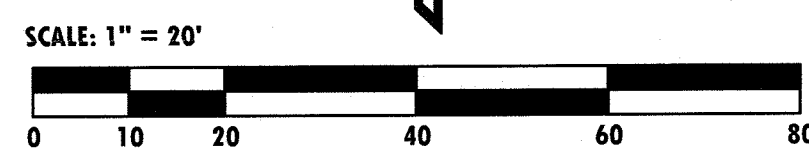
EXACT POLE LOCATIONS DETERMINED BY ENGINEER IN THE FIELD.
 POTHOLE POLE FOUNDATIONS PRIOR TO ORDERING POLES & MAST ARMS.



TRAFFIC SIGNAL CONSTRUCTION NOTES:

- CONTRACTOR SHALL CONSTRUCT (TYPE 332 CABINET) FOUNDATION. CONTRACTOR SHALL FURNISH AND INSTALL MODEL 2070 CONTROLLER ASSEMBLY IN MODEL 332 ANODIZED ALUMINUM CABINET, COMPLETE WITH DETECTION SHOWN AND AUXILIARY EQUIPMENT WITHIN A TYPE 332 CABINET PER CITY OF RIVERSIDE SPECIFICATIONS.
- INSTALL 1A (10") ELECTRICAL SERVICE POLE PER CITY OF RIVERSIDE STANDARD DRAWING NO. 667. ALL ELECTRICAL FACILITIES INSTALLED BY CONTRACTOR SHALL BE INSPECTED AND APPROVED BY THE DEPARTMENT CONSTRUCTION INSPECTOR (951-826-2335 OR 951-826-2416). ANY CHANGES SHALL BE APPROVED BY THE DEPARTMENT PRIOR TO EXECUTION. THE CONTRACTOR SHALL BE RESPONSIBLE FOR COORDINATING ALL PHASES OF CONSTRUCTION WITH THE DEPARTMENT CONSTRUCTION INSPECTOR, A MINIMUM OF THREE WEEKS PRIOR TO TRAFFIC SIGNAL TURN ON.
- CONTRACTOR SHALL COORDINATE WITH RIVERSIDE PUBLIC UTILITIES (ELECTRICAL) TO REMOVE AND SALVAGE STREET LIGHT STANDARD. CONTRACTOR MAY CONTACT RIVERSIDE PUBLIC UTILITIES ELECTRIC AT 951-826-5866 TO COORDINATE EFFORT.
- INSTALL ONE (1) GIT MODEL No. 711 (OR CITY-APPROVED EQUAL) EMERGENCY VEHICLE PRE-EMPTION DETECTOR ASSEMBLY (INCLUDING MOUNTING HARDWARE AND CABLE) FOR EACH DIRECTION AS SHOWN ON THE PLAN. E.V.P.E. SHALL BE MOUNTED ON THE MAST ARM. SEE DETAIL.
- INSTALL FLIR TRAFISENSE THERMAL TRAFFIC SENSOR ON LUMINAIRE/SIGNAL MAST ARM PER DETAIL THIS SHEET. CAMERA SHALL BE PROGRAMMED BY THE CONTRACTOR. DETECTION SYSTEM SHALL MEET CITY OF RIVERSIDE SPECIFICATIONS.
- CONTRACTOR SHALL INSTALL 2-WIRE ACCESSIBLE PEDESTRIAN SIGNAL (APS). THE SYSTEM SHALL BE POLARA MODEL OR APPROVED EQUAL.
- LED LIGHTING UNITS SHALL MEET THE CITY OF RIVERSIDE LIGHTING STANDARD SPECIFICATIONS.
- FURNISH AND INSTALL SIGN (NOTED) ON MAST ARM. MOUNTING SHALL BE PER CALTRANS REVISED STD. PLAN RSP ES-7N DETAIL "U".
- FURNISH AND INSTALL PULL BOX AND CONDUIT TERMINATION FOR FUTURE DETECTION LOOPS.
- INSTALL MAST ARM TENON AT DISTANCE INDICATED (FOR FUTURE USE).

Underground Service Alert
 Call: TOLL FREE 811
 www.call811.com
 TWO WORKING DAYS BEFORE YOU DIG



URBAN CROSSROADS
 206 E. BAKER STREET, SUITE 200
 COSTA MESA, CA 92626
 TELEPHONE # 949-660-1994
 3/1/2018
 CARLETON WATERS R.C.E. 52916

MARK	REVISIONS	APPR.	DATE

DESIGNED BY EL DRAWN BY EL CHECKED BY CDW

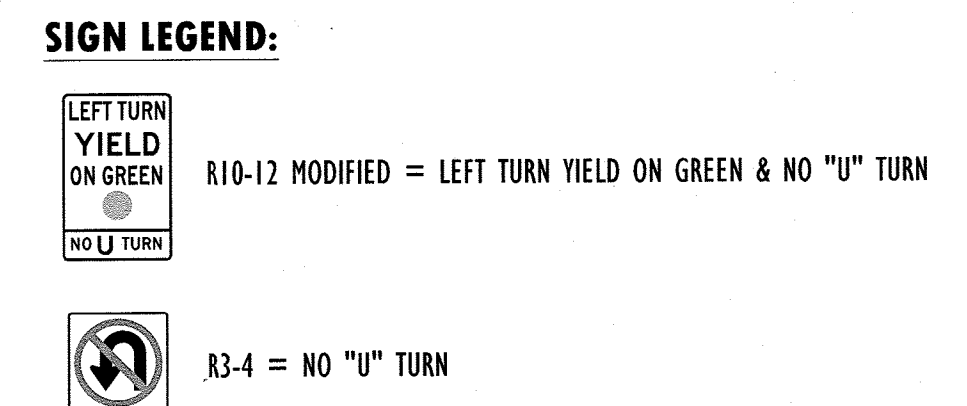
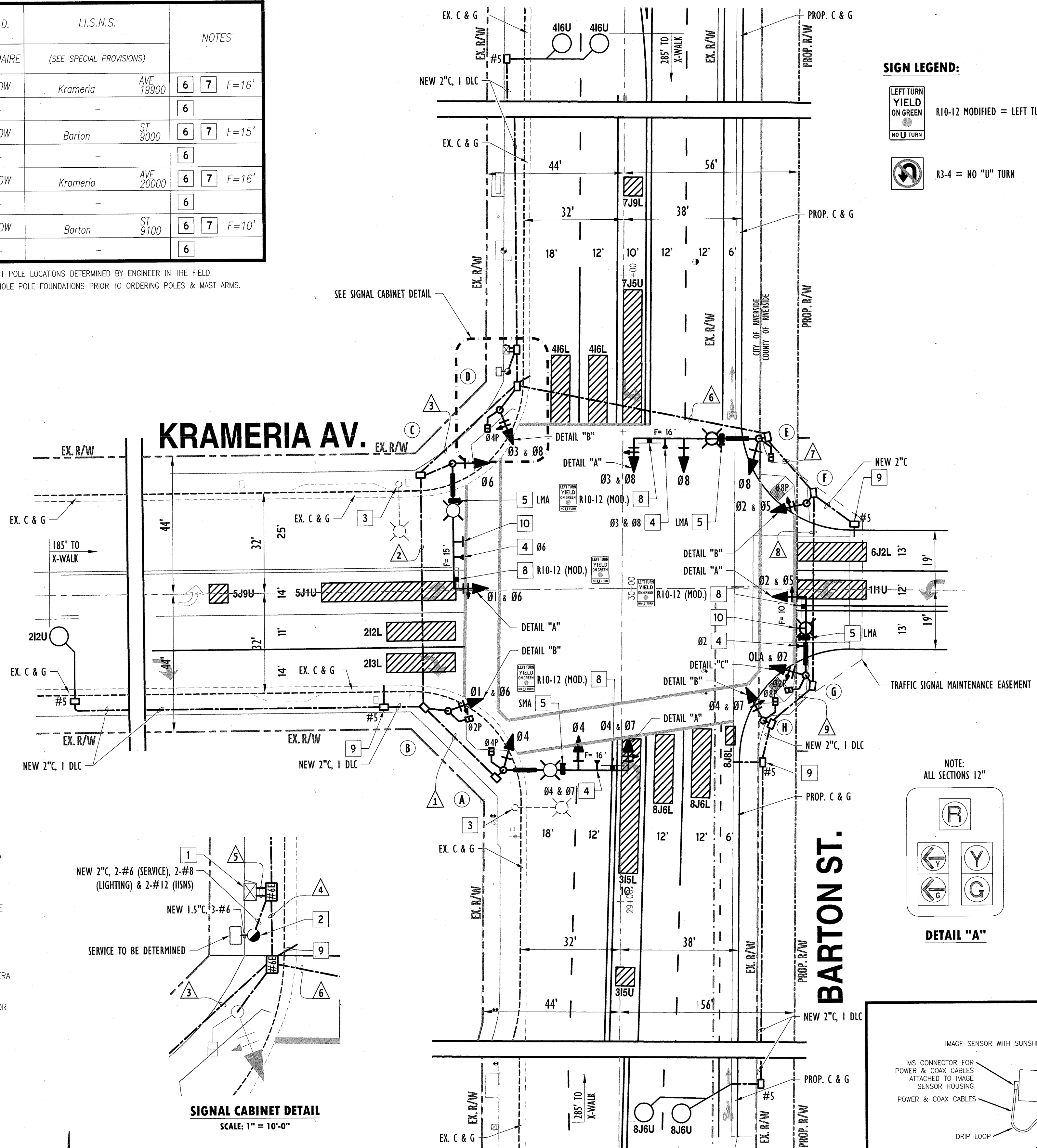
CITY OF RIVERSIDE, CALIFORNIA
 PUBLIC WORKS DEPARTMENT

APPROVED BY	BY	DATE	APPROVED BY
ENGINEERING MANAGER	EL	3/1/18	MARK STUEVER - CITY ENGINEER
CONST. CONTRACT ADMIN.	EL	3/1/18	
STREET SERVICES			
PUBLIC UTILITIES (ELECTRICAL)			
TRAFFIC DIVISION			

DATE: 3/1/18

TRAFFIC SIGNAL PLAN
 Krameria Av. at Barton St.
 HORIZONTAL SCALE: 1" = 20' VERTICAL SCALE: NONE

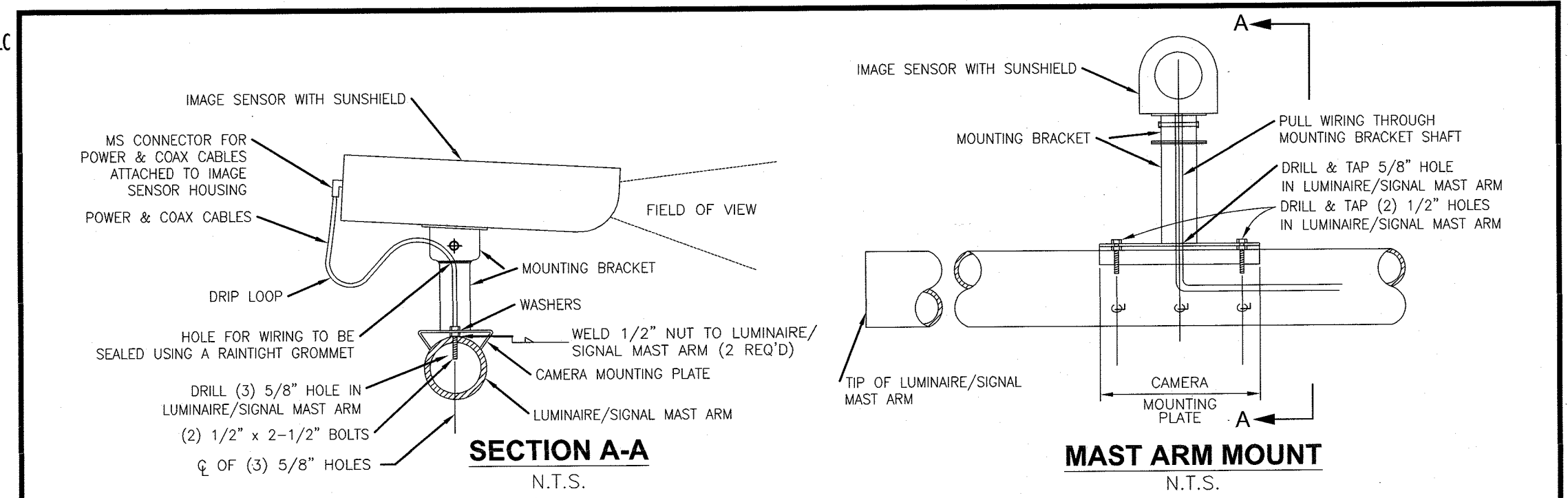
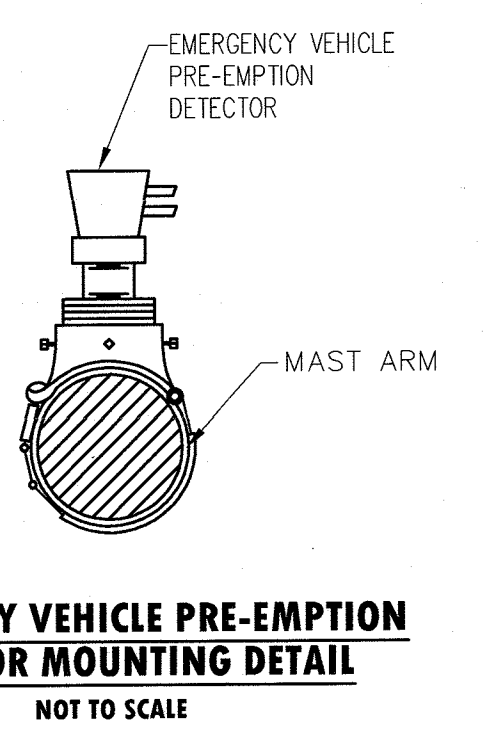
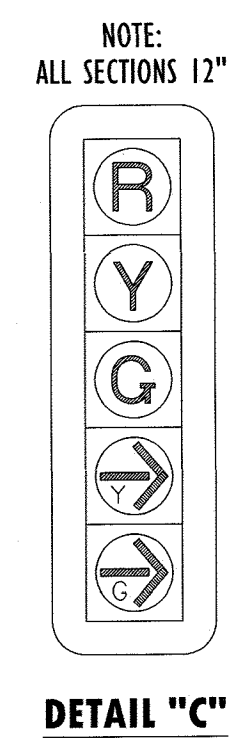
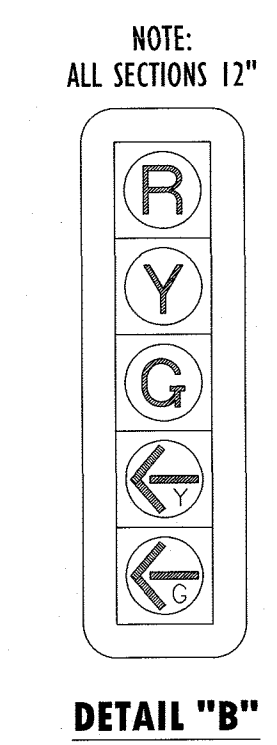
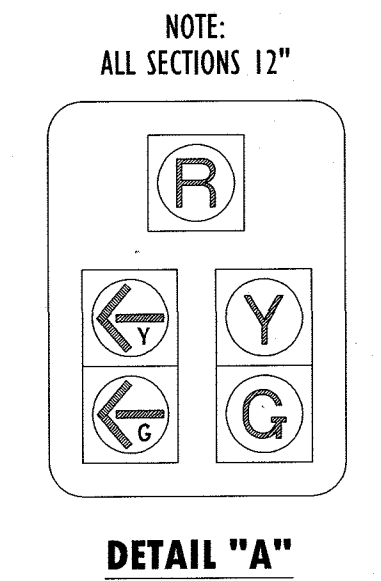
ACCT. NO.
X - 557
 SHEET 2 OF 4
MJ-085



CONDUCTOR SCHEDULE

AWG SIZE OR CABLE TYPE	POLE OR CIRCUIT									
		1	2	3	4	5	6	7	8	9
12 CSC	POLE-A	1	1	1	1	1	1	1	1	1
	B	1	1	1	1	1	1	1	1	1
	C	1	1	1	1	1	1	1	1	1
	D	1	1	1	1	1	1	1	1	1
	E	1	1	1	1	1	1	1	1	1
	F	1	1	1	1	1	1	1	1	1
	G	1	1	1	1	1	1	1	1	1
	H	1	1	1	1	1	1	1	1	1
3 CSC TOTAL		1	1	1	1	1	1	1	1	1
# 12 I.I.S.N.S.		2	2	2	2	2	2	2	2	2
# 8 LUMINAIRE		2	2	2	2	2	2	2	2	2
# 6 SERVICE		-	-	-	-	2	-	-	-	-
TYPE "B"		-	-	-	-	-	-	-	-	-
Ø2		-	1	1	1	1	-	-	-	-
Ø4		-	-	-	-	1	-	-	-	-
Ø8		-	-	-	-	1	1	1	1	1
DLC TOTAL		-	1	1	2	3	1	1	1	1
VIDEO (COAX)		1	1	2	4	4	2	1	1	-
3 #16 CAMERA POWER CABLE		1	1	2	4	4	2	1	1	-
EVP CABLE		1	1	2	4	4	2	1	1	-
CONDUIT SIZE		3"	4"	4"	2-4"	2-4"	4"	4"	4"	3"
% FILLS		14	13	20	24	24	18	13	9	-

ALL CONDUIT, CABLES, AND CONDUCTORS ARE NEW.
 * CONDUCTORS FOR POSSIBLE FUTURE CROSSWALK.



108346 - 108350 (CAD) von_burden_eng - 3/1/2018 - EL