

**CONSTRUCTION NOTES
(INTERCONNECT CABLE AND CONDUIT)**

- (A) (---) - EXISTING 6 PAIR #19 INTERCONNECT CABLE IN EXISTING CONDUIT.
- (B) (---) - EXISTING 6 PAIR #22 INTERCONNECT CABLE IN EXISTING CONDUIT.
- (C) (---) - INSTALL 6 PAIR #19 INTERCONNECT CABLE IN EXISTING CONDUIT.
- (D) (////) - INSTALL 6 PAIR #19 INTERCONNECT CABLE IN NEW 1 1/2" CONDUIT.
- (E) (///) - REMOVE EXISTING INTERCONNECT CABLE AND INSTALL NEW 6 PAIR #19 INTERCONNECT CABLE IN EXISTING CONDUIT.

ENGINEER IN RESPONSIBLE CHARGE
Patricia Castillo
 PATRICIA LYNN CASTILLO
 TR. NO. 2273
 DATE: 8/18/05

MARK	REVISIONS	APPR.	DATE

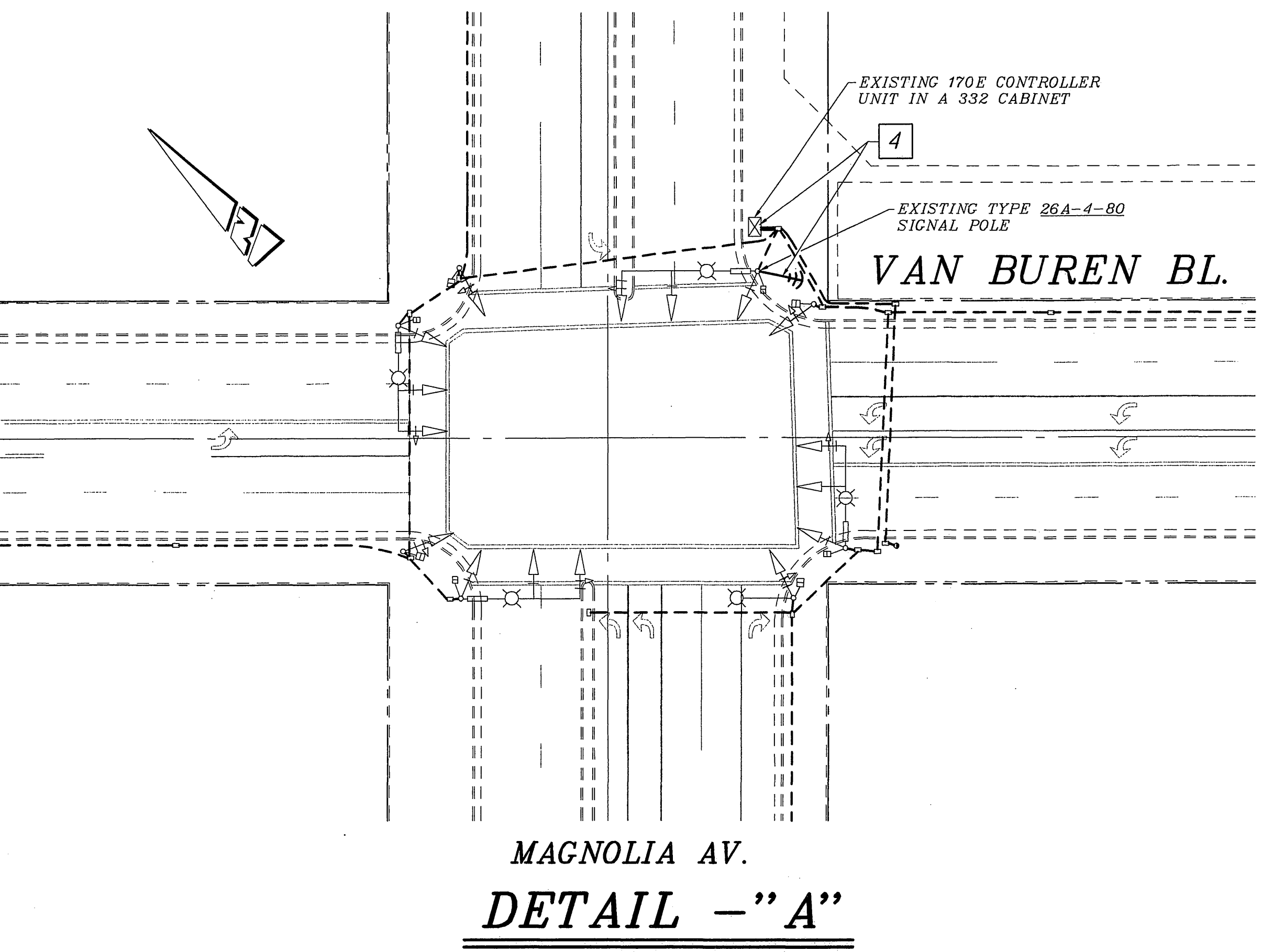
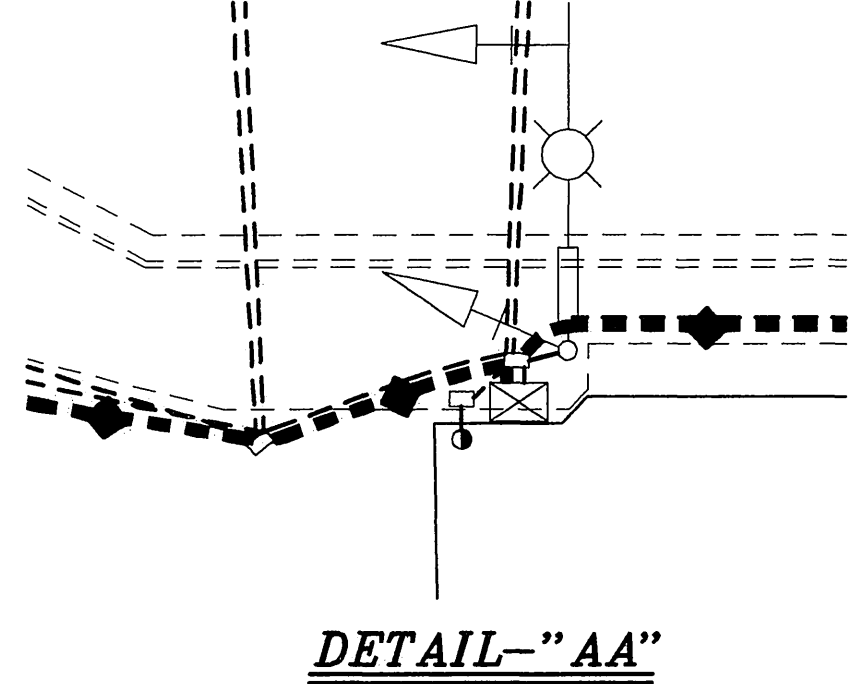
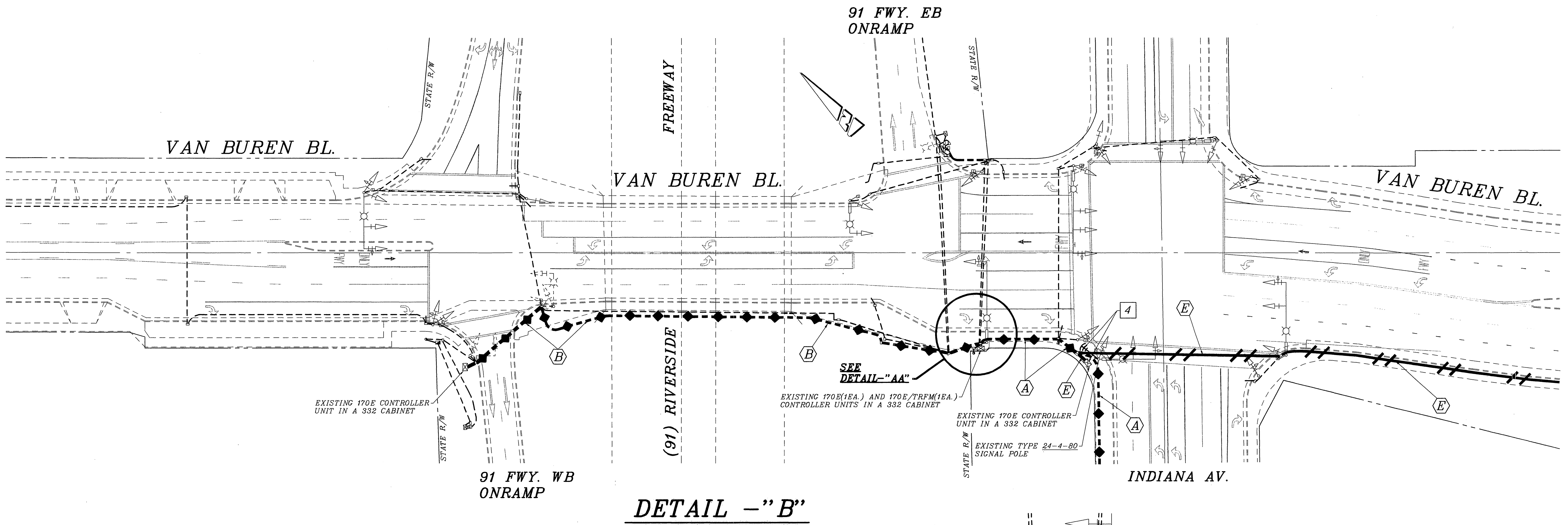
DESIGNED BY: R.C.C. DRAWN BY: R.C.C. CHECKED BY: _____

**CITY OF RIVERSIDE, CALIFORNIA
DEPARTMENT OF PUBLIC WORKS**

APPROVED BY	BY	DATE	APPROVED BY	BY	DATE
PRINCIPAL ENGINEER		8/18/05			8/18/05
TRAFFIC DIVISION			CITY ENGINEER		

DATE: 8/18/05

TRAFFIC SIGNAL SYSTEM INTERCONNECT	ACCT. NO. 9577630214-44030200
VAN BUREN BOULEVARD MAGNOLIA AV. TO VICTORIA AV.	X-057
SCALE: 1" = 200'	SHEET 1 OF 3 FILE NAME: X057-1.DWG



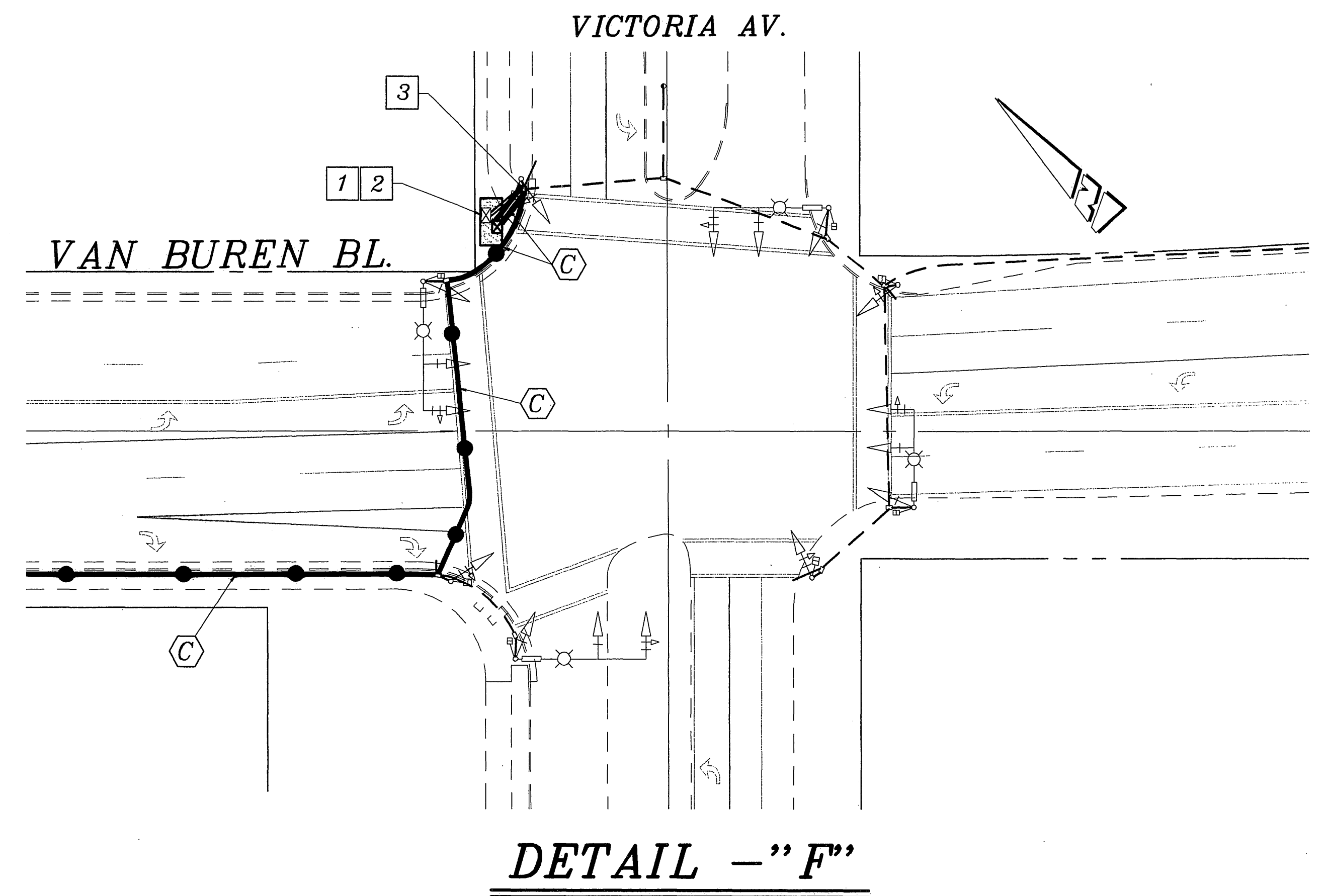
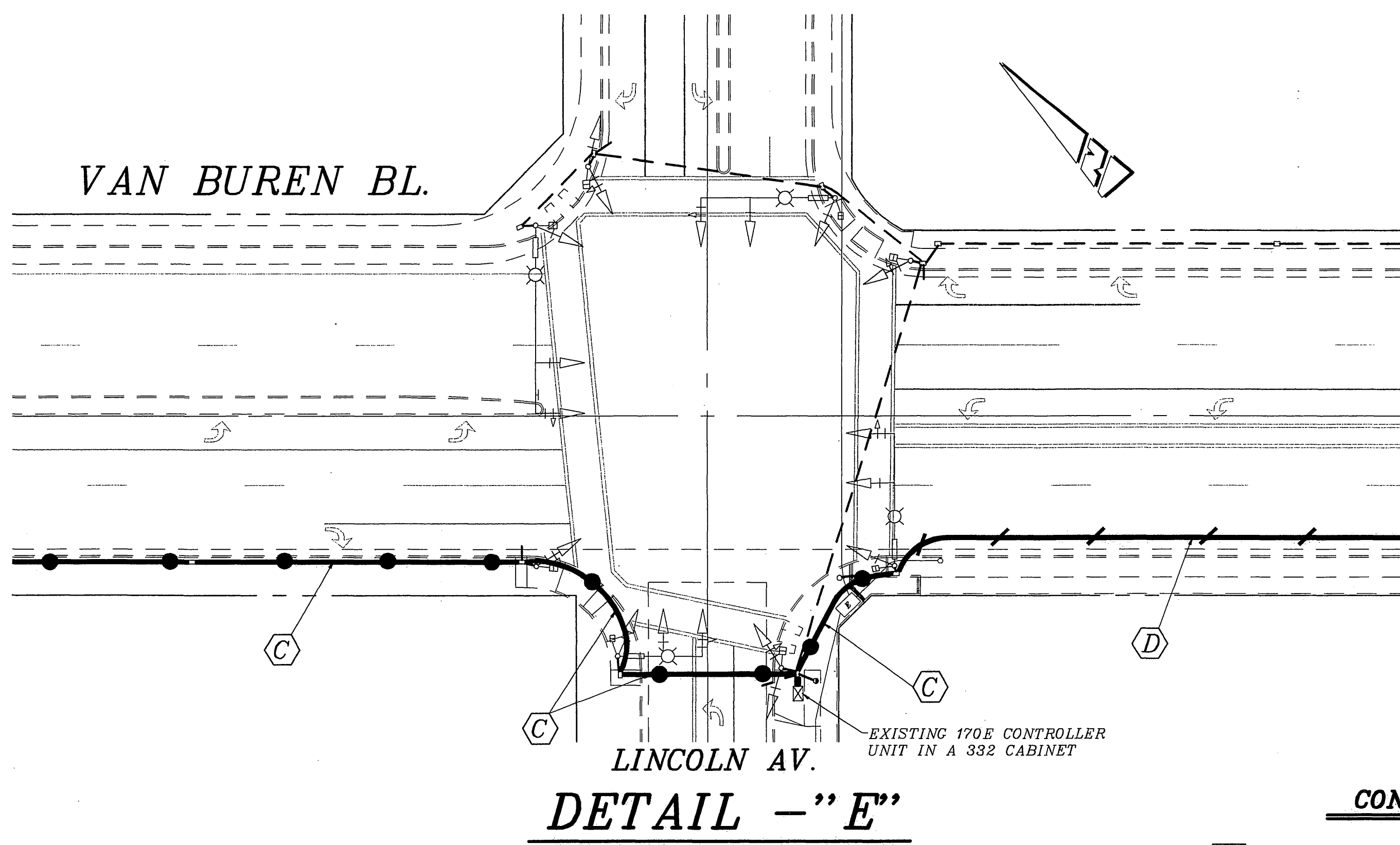
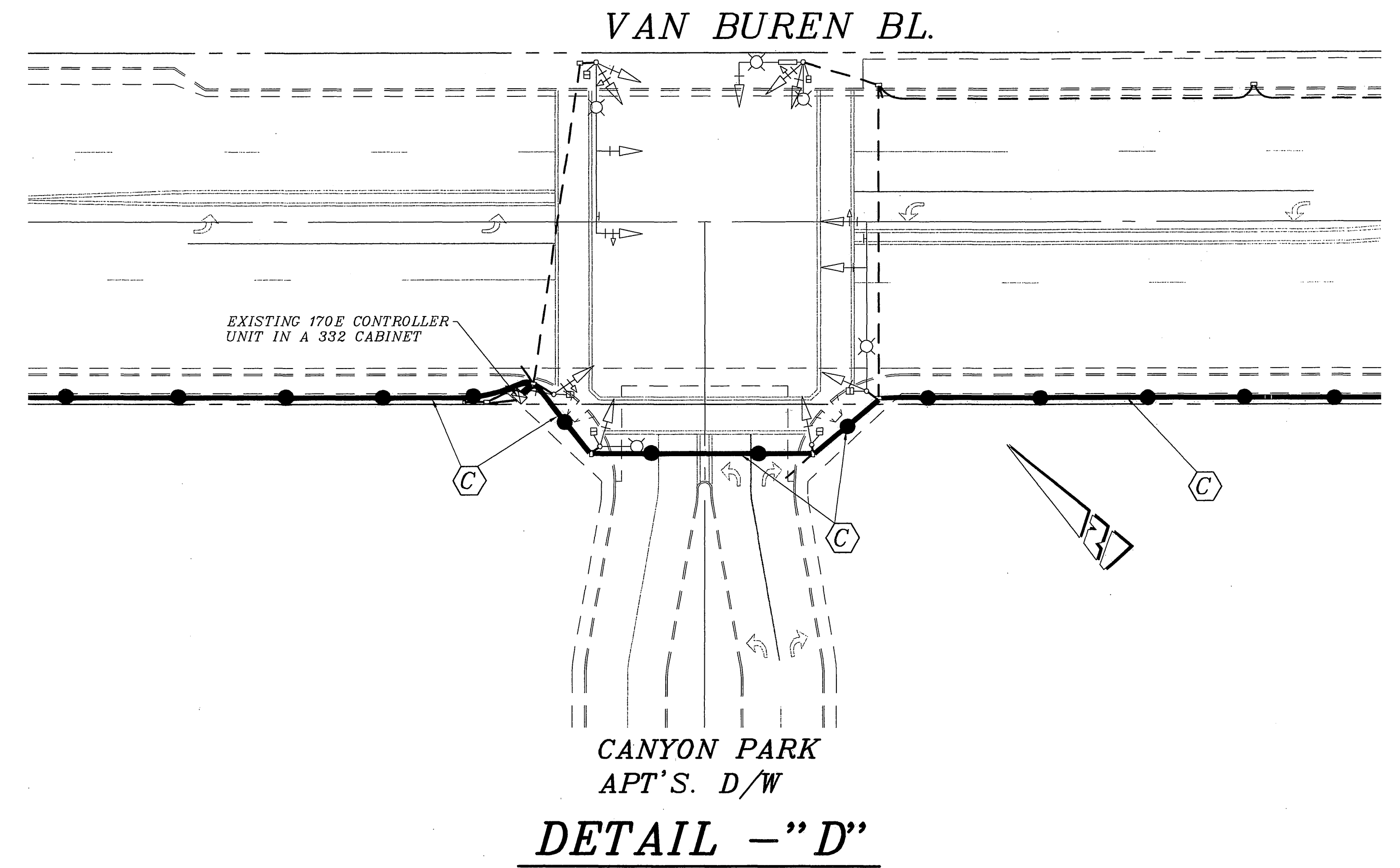
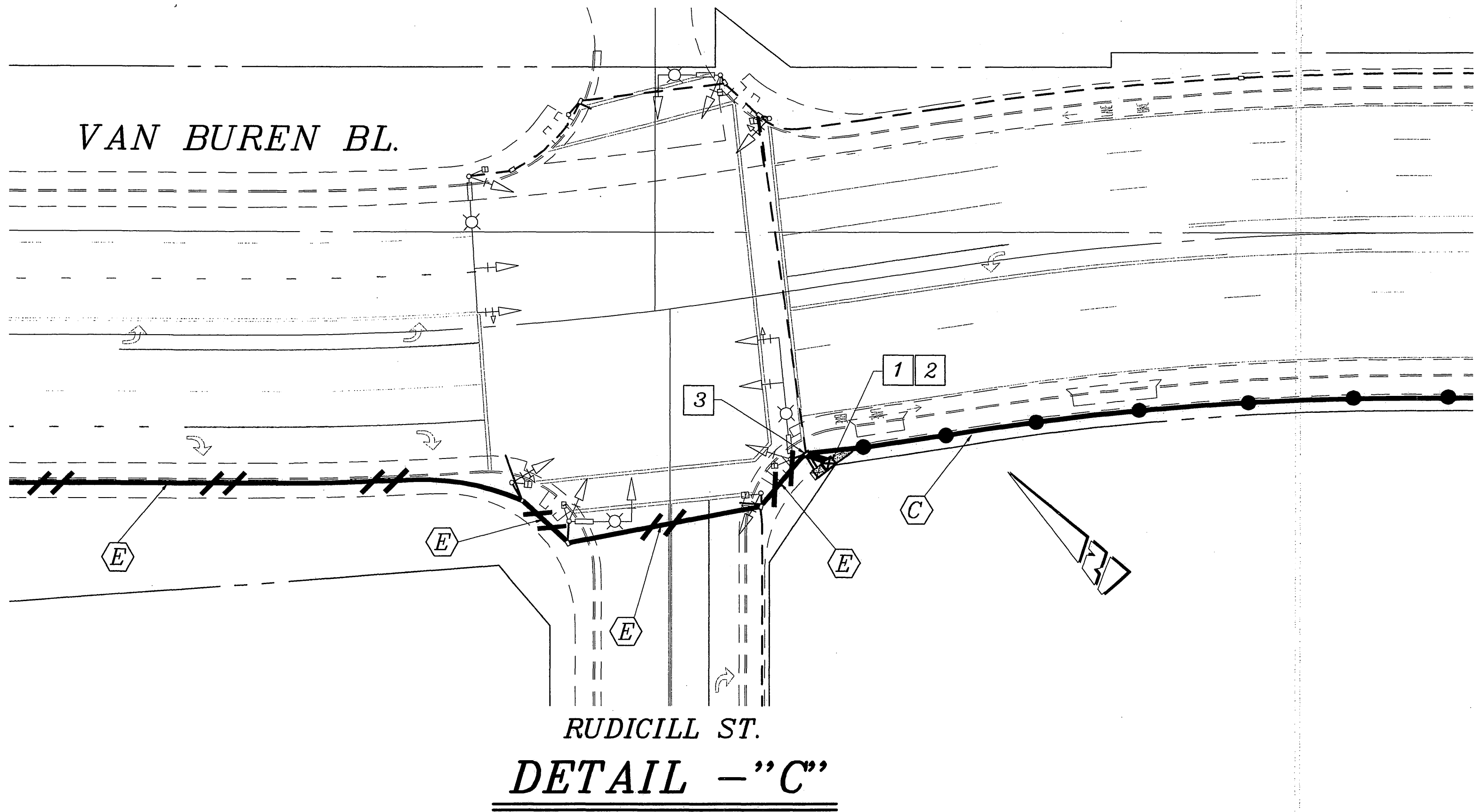
CONSTRUCTION NOTES

- 1 - REMOVE AND SALVAGE EXISTING TYPE 90 CONTROLLER ASSEMBLY. REMOVE FOUNDATION. INSTALL MODEL 170E/332 CABINET ASSEMBLY ON NEW FOUNDATION.
- 2 - WITHDRAW EXISTING CABLES AND CONDUCTORS FROM EXISTING CONDUIT RUN, AND INSTALL EXISTING CABLES AND CONDUCTORS IN NEW CONDUIT RUN (2-3" CONDUIT), FROM #6(E) PULL BOX TO CONTROLLER CABINET.
- 3 - REPLACE EXISTING #6 PULL BOX WITH NEW #6(E) PULL BOX.
- 4 - INSTALL FULLY OPERATIONAL SPREAD SPECTRUM RADIO EQUIPMENT. (SEE SPECIAL PROVISIONS FOR ADDITIONAL INFORMATION)

**CONSTRUCTION NOTES
(INTERCONNECT CABLE AND CONDUIT)**

- (A) (---) - EXISTING 6 PAIR #19 INTERCONNECT CABLE IN EXISTING CONDUIT.
- (B) (---) - EXISTING 6 PAIR #22 INTERCONNECT CABLE IN EXISTING CONDUIT.
- (C) (---) - INSTALL 6 PAIR #19 INTERCONNECT CABLE IN EXISTING CONDUIT.
- (D) (---) - INSTALL 6 PAIR #19 INTERCONNECT CABLE IN NEW 1 1/2" CONDUIT.
- (E) (---) - REMOVE EXISTING INTERCONNECT CABLE AND INSTALL NEW 6 PAIR #19 INTERCONNECT CABLE IN EXISTING CONDUIT.

<p align="center">ENGINEER IN RESPONSIBLE CHARGE</p> <p align="center"><i>Patricia Castillo</i> PATRICIA LYNN CASTILLO TR. NO. 2273 DATE: 8/18/05</p>		CITY OF RIVERSIDE, CALIFORNIA DEPARTMENT OF PUBLIC WORKS		TRAFFIC SIGNAL SYSTEM DETAILS	ACCT. NO. 9577630214-44030200
		APPROVED BY: <i>[Signature]</i> DATE: 8/18/05 PRINCIPAL ENGINEER TRAFFIC DIVISION		APPROVED BY: <i>[Signature]</i> CITY ENGINEER	
DESIGNED BY: R.G.G. DRAWN BY: R.G.G. CHECKED BY:		DATE: 8/18/05		SCALE: 1" = 30' SHEET 2 OF 3	X-057 FILE NAME: X057-2.DWG



**CONSTRUCTION NOTES
(INTERCONNECT CABLE AND CONDUIT)**

- A (---) - EXISTING 6 PAIR #19 INTERCONNECT CABLE IN EXISTING CONDUIT.
- B (---) - EXISTING 6 PAIR #22 INTERCONNECT CABLE IN EXISTING CONDUIT.
- C (---) - INSTALL 6 PAIR #19 INTERCONNECT CABLE IN EXISTING CONDUIT.
- D (---) - INSTALL 6 PAIR #19 INTERCONNECT CABLE IN NEW 1 1/2" CONDUIT.
- E (---) - REMOVE EXISTING INTERCONNECT CABLE AND INSTALL NEW 6 PAIR #19 INTERCONNECT CABLE IN EXISTING CONDUIT.

CONSTRUCTION NOTES

- 1 - REMOVE AND SALVAGE EXISTING TYPE 90 CONTROLLER ASSEMBLY. REMOVE FOUNDATION. INSTALL MODEL 170E/332 CABINET ASSEMBLY ON NEW FOUNDATION.
- 2 - WITHDRAW EXISTING CABLES AND CONDUCTORS FROM EXISTING CONDUIT RUN, AND INSTALL EXISTING CABLES AND CONDUCTORS IN NEW CONDUIT RUN (2-3" CONDUIT), FROM #6(E) PULL BOX TO CONTROLLER CABINET.
- 3 - REPLACE EXISTING #6 PULL BOX WITH NEW #6(E) PULL BOX.

ENGINEER IN RESPONSIBLE CHARGE
Patricia Lynn Castillo
 PATRICIA LYNN CASTILLO
 TR. NO. 2273
 DATE 8/18/05



MARK	REVISIONS	APPR.	DATE

**CITY OF RIVERSIDE, CALIFORNIA
DEPARTMENT OF PUBLIC WORKS**

APPROVED BY	BY	DATE	APPROVED BY	BY	DATE
PRINCIPAL ENGINEER	PL	8/22/05	CITY ENGINEER	BSJ	8/22/05
TRAFFIC DIVISION					

DESIGNED BY: R.C.C. DRAWN BY: R.C.C. CHECKED BY:

TRAFFIC SIGNAL SYSTEM DETAILS

**VAN BUREN BOULEVARD
MAGNOLIA AV. TO VICTORIA AV.**

SCALE: 1" = 30'

ACCT. NO.
9577630214-44030200

X-057

SHEET **3** OF **3**

FILE NAME: X057-3.DWG