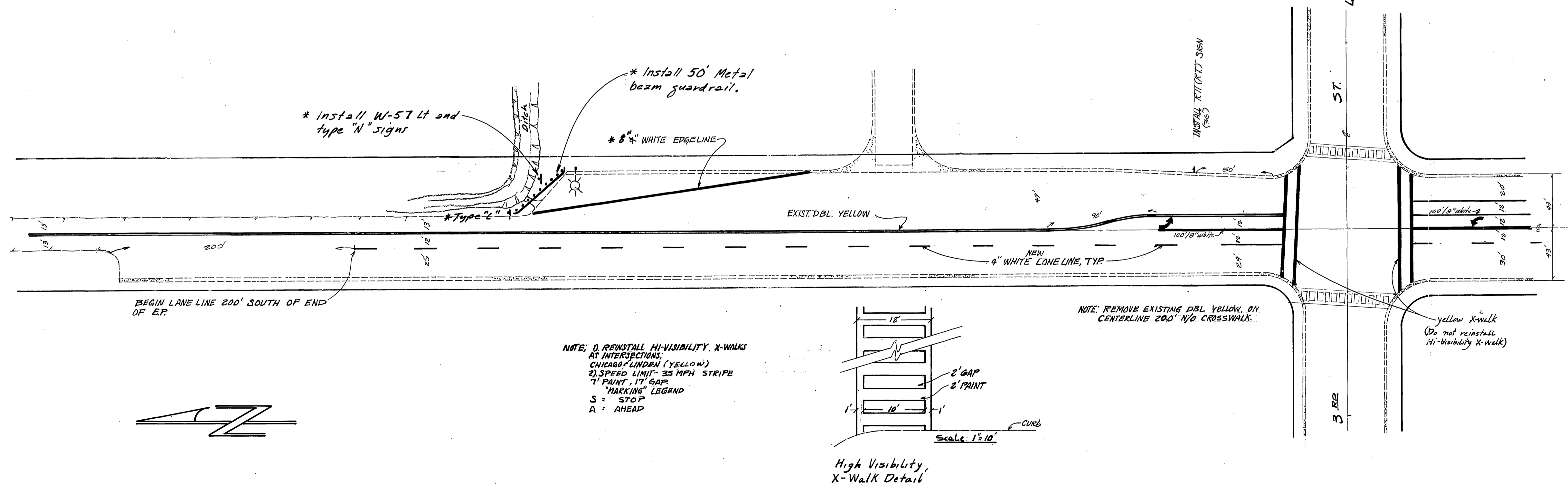




LINDEN

TRAFFIC CONTROL QUANTITIES

Striping	
Double Yellow, 2-4"	1810 L.F.
Two-way Turn Lane, 2-4"	1160 L.F.
Single Yellow, 4"	0 L.F.
White Lane line, 4" skip	1500 L.F.
Solid White, 4"	300 L.F.
8" White Barrier	615 L.F.
Pavement Markings	
12" White or Yellow (x-walks, etc)	630 ft ²
Arrow Stencils (12 ea)	172 ft ²
Word Stencils (14 ea)	412 ft ²
High Visibility x-walks (2 ea)	1080 ft ²
Total	2274 ft²
Raised Reflective Pavement Markers	
2-way Amber	0 ea
1-way Amber	0 ea
1-way Clear	0 ea
Signs - new installations	1 ea
Striping Removal (200 lf)	133



CITY OF RIVERSIDE, CALIFORNIA DEPARTMENT OF PUBLIC WORKS		STRIPING PLAN	ACCOUNT No. 30-575-205-07
APPROVED BY PRINCIPAL ENGINEER PARK DEPARTMENT TRAFFIC DIVISION CHIEF P. W. ENGR.	BY DATE [Signature] 7/11/83	APPROVED BY DIRECTOR OF PUBLIC WORKS [Signature]	DRAWING NUMBER XL-133
MARK: * Add guardrail & W57 & N signs, OR S	REVISIONS	DATE: 8/1/83	SHEET 1 OF 1
DESIGNED BY: D. Kay	DRAWN BY: G. [Signature]	CHECKED BY: D. Kay	SCALE: 1"=50'