

NOTE:
LANE LINE TO PROVIDE SMOOTH
UNIFORM RADIUS CIRCLE—NOT
TO FOLLOW MEDIAN CURB.

SEE NOTE
ABOVE RIGHT

See Sheet 2

STRIPING PLAN

CITY OF RIVERSIDE
PUBLIC WORKS DEPARTMENT

**REHABILITATION OF MAJOR
CITY STREETS 1984**

ACCOUNT NO. 30-875-244-07

APPROVED BY	DATE	BY	APPROVED BY	DATE
PRINCIPAL ENGINEER	9/18/84	[Signature]	PUBLIC WORKS DIRECTOR	8/8/84
PARK DEPARTMENT				
TRAFFIC DIVISION	9/18/84	J		
CHIEF P. W. ENGINEER	W. G.	8.8		

**FOURTEENTH STREET
HOWARD TO PENNSYLVANIA**

XL-146
SHEET 1 OF 12

DESIGNED BY D. Ray, DRAWN BY [Signature], CHECKED BY [Signature]

HORIZ. SCALE: 1" = [unintelligible] VERT. SCALE: 1" = [unintelligible]

36

37

38

39

40

41

42

43

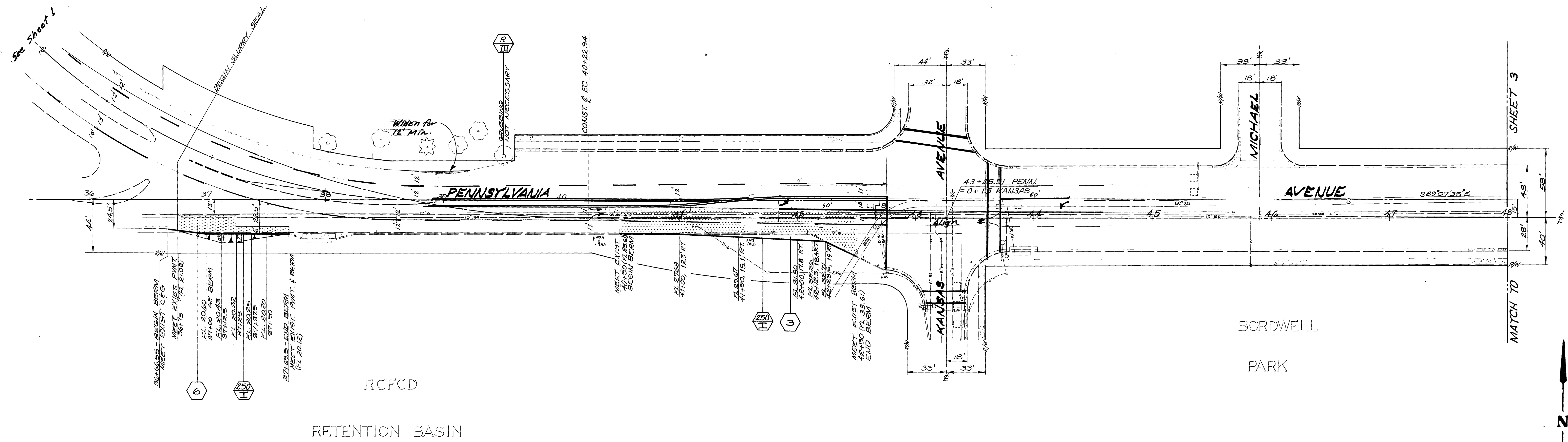
44

45

46

47

FB-1016/43
 ELEV - 937.22
 B.M. - PK NAIL AND TAG IN CTR. OF S.E.
 COR. RET. AT KANSAS AND
 PENNSYLVANIA AVE.
 (PRECISE B.M. H.T.)



RCFCD
 RETENTION BASIN

BORDWELL
 PARK

CITY OF RIVERSIDE PUBLIC WORKS DEPARTMENT		PENNSYLVANIA AVENUE WIDENING WLY OF KANSAS TO CHICAGO		ACCOUNT NO. 30-575-217-07 R-2072 XI-146 SHEET 2 OF 4
APPROVED BY PRINCIPAL ENGINEER PARK DEPARTMENT TRAFFIC DIVISION CHIEF P. W. ENGINEER	APPROVED BY PUBLIC WORKS DIRECTOR	DESIGNED BY DRAWN BY CHECKED BY	DATE 5/15/80	HORIZ. SCALE: 1" = 40' VERT. SCALE: 1" = 10'

* AS BUILT 4/15/81 CR INDEXED RKE