



SHEET 1 OF 6

MATCH TO

ABOVE

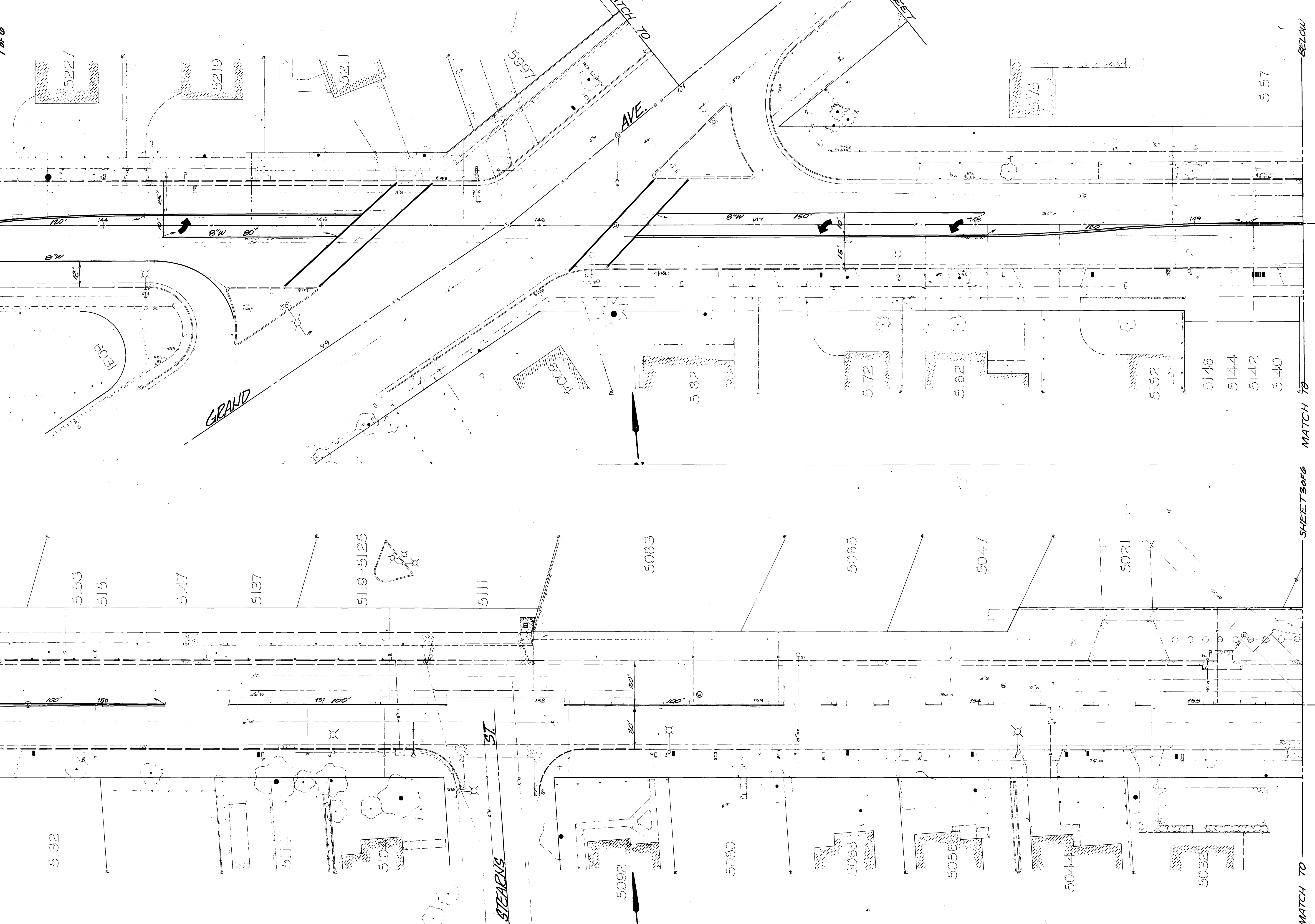
MATCH TO

BELOW

MATCH TO

SHEET 3 OF 6

MATCH TO



<p>APPROVED BY          PRINCIPAL ENGINEER <i>Jul 7-85</i>          PARK DEPARTMENT          TRAFFIC DIVISION          CHIEF P.W. ENGINEER</p>		<p>APPROVED BY  <i>William D. Gardner</i>          PUBLIC WORKS DIRECTOR          DATE 7-29-85</p>		<p>STRIPING &amp; SIGNS FOR          REHABILITATION OF MAJOR          CITY STREETS 1985          JURUPA AVENUE</p>		<p>ACCOUNT NO. 30575-286-01          XL-162          SHEET 2 OF 6          FILE NO.</p>	
DESIGNED BY	DRAWN BY	CHECKED BY					

HORIZ. SCALE: 1" = 20' VERT. SCALE: 1" = 10'

SHEET 2 OF 6

BELOW SHEET 4933

MATCH TO

MATCH TO

ABOVE SHEET 4933

MATCH TO SHEET 4066

MATCH TO

MATCH TO

5003

4983-85-87

4973

4953

4933

5010

CORBELL ST.

4996

4986

4988

4948

4944

S S X

4933

5995

4915

4895

4891

488

4873

4861

PAINT YELLOW

6" EDGELINE

X S S

6005

MEADOWBROOK

4918

4910

4904

4850



ADDED EDGELINE	9-9-85
REVISIONS	APPR. DATE
DESIGNED BY	DRAWN BY
CHECKED BY	

**CITY OF RIVERSIDE**  
**PUBLIC WORKS DEPARTMENT**

APPROVED BY  
 PARK DEPARTMENT: *JFK 7-26*  
 TRAFFIC DIVISION: *D. Ray Jec*  
 CHIEF P. W. ENGINEER

APPROVED BY  
 PUBLIC WORKS DIRECTOR: *William D. Gardner*

DATE: 7-29-85

STRIPING & SIGNS FOR  
 REHABILITATION OF MAJOR  
 CITY STREETS 1985

**JURUPA AVENUE**  
 STREETED TO MAGNOLIA

HORIZ. SCALE: 1" = 20'  
 VERT. SCALE: 1" =

ACCOUNT NO. 30-575-286-01

**XL-162**

SHEET 3 OF 6

FILE NO.





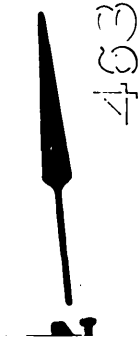
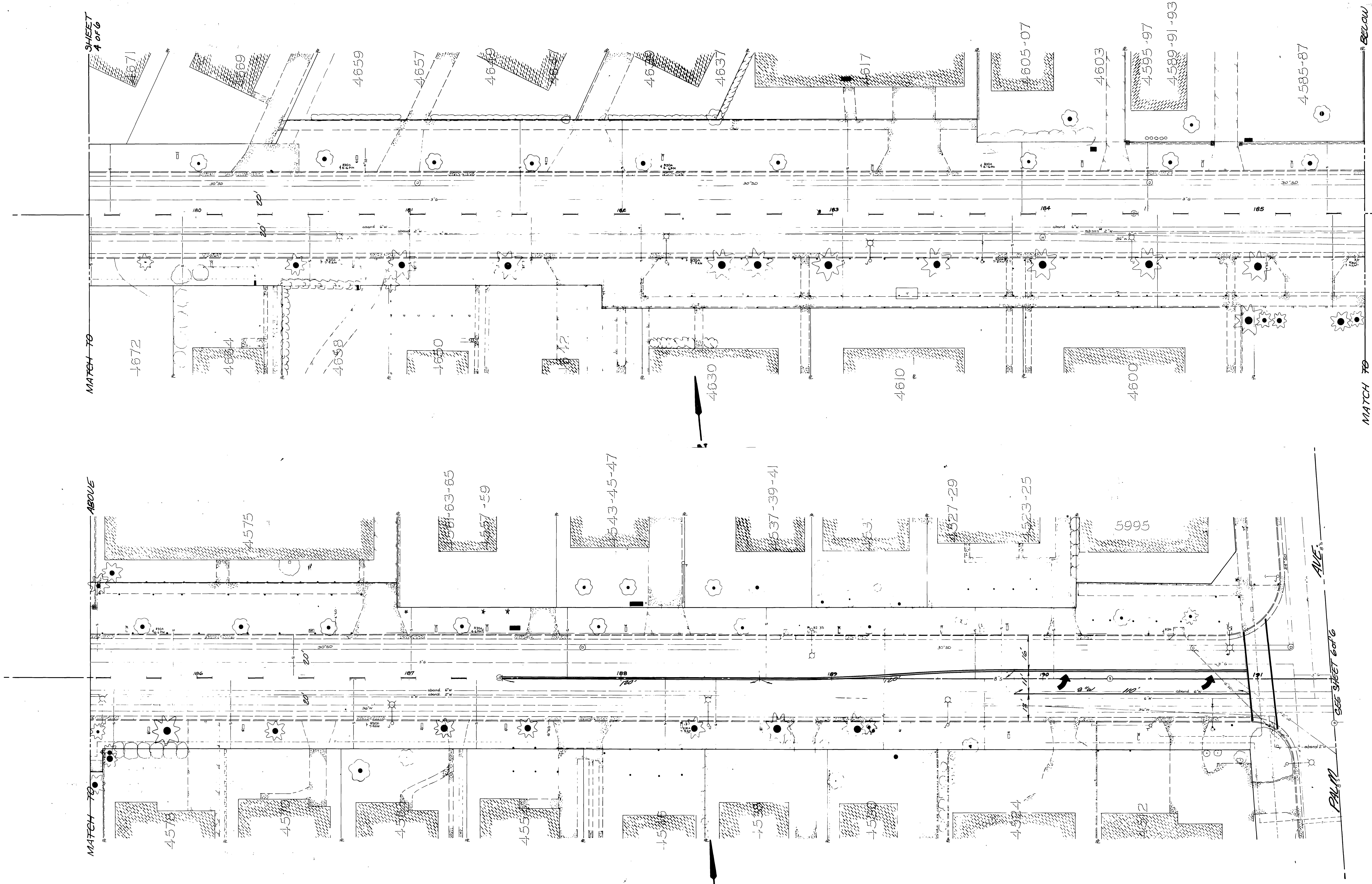
SHEET 4 OF 6

MATCH TO

ABOVE

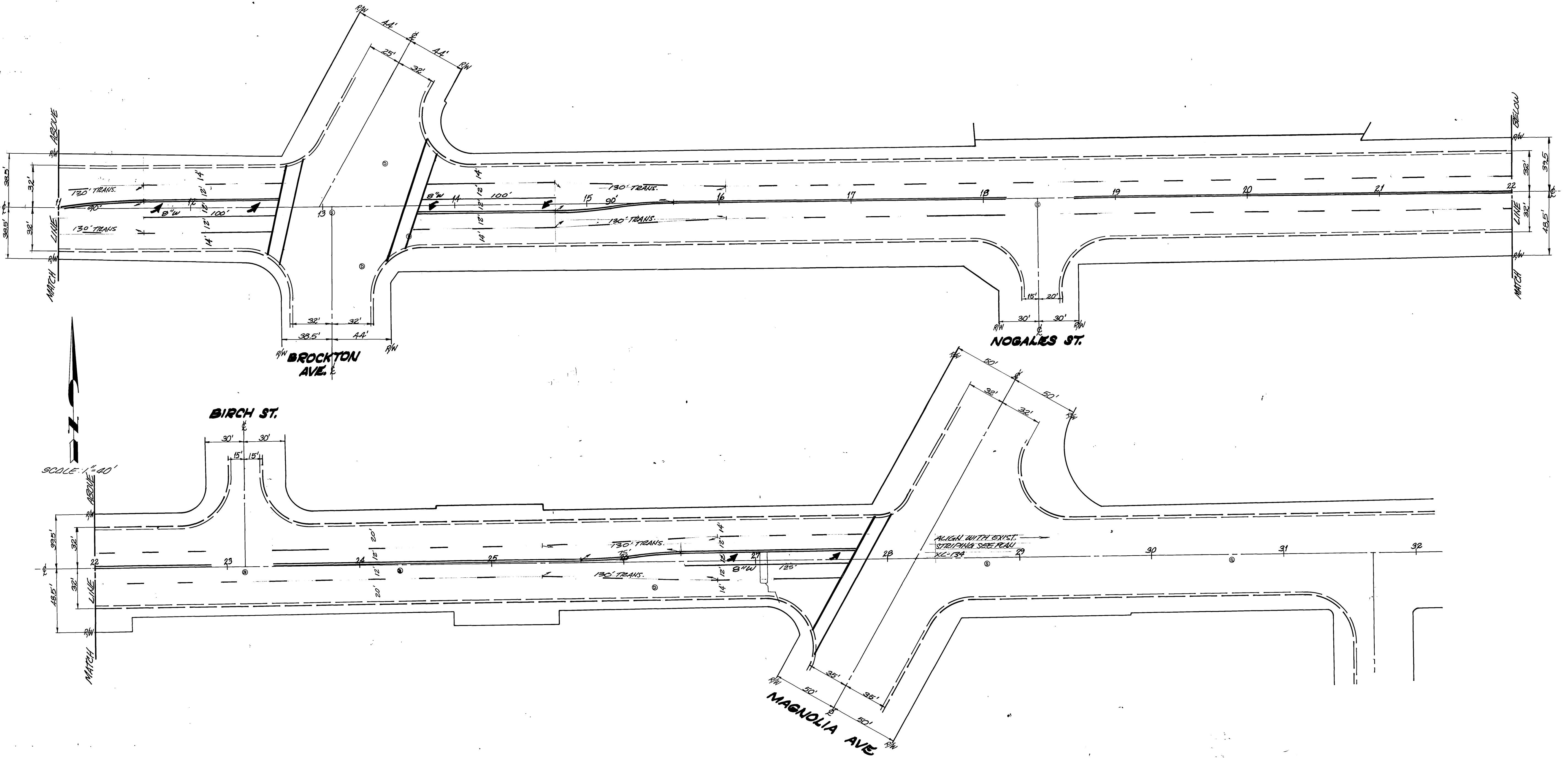
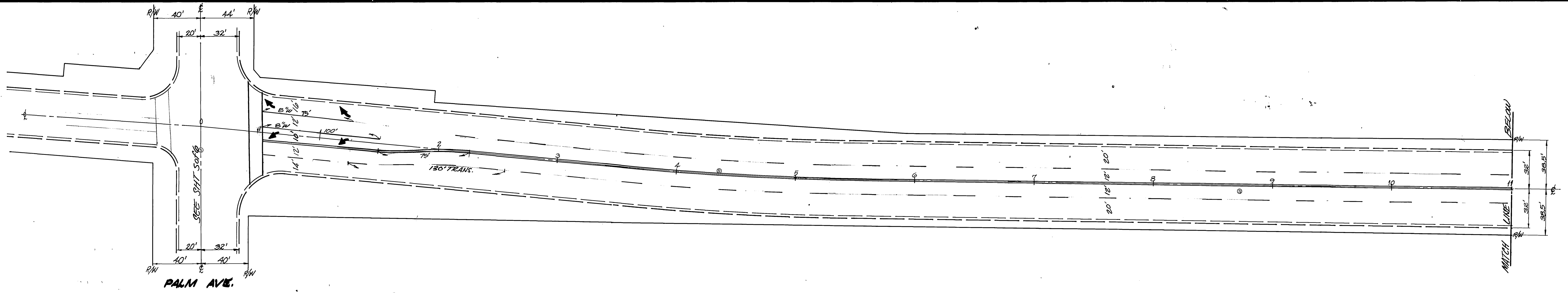
MATCH TO

MATCH TO BELOW



SEE SHEET 6 OF 6  
PALM AVE.

<p>APPROVED BY PRINCIPAL ENGINEER PARK DEPARTMENT TRAFFIC DIVISION CHIEF P. W. ENGINEER</p>		<p>APPROVED BY <i>William D. Hardner</i> PUBLIC WORKS DIRECTOR</p>		<p>ACCOUNT NO. 20-575-286-03</p>	
<p>DESIGNED BY _____</p>		<p>DRAWN BY <i>AK</i></p>		<p>CHECKED BY <i>D. Lopez</i></p>	
<p>MARK _____</p>		<p>REVISIONS _____</p>		<p>APPR. DATE _____</p>	
<p>CITY OF RIVERSIDE PUBLIC WORKS DEPARTMENT</p>		<p>STRIPING &amp; SIGNS FOR REHABILITATION OF MAJOR CITY STREETS 1985</p>		<p>XL-162</p>	
<p>DATE 7-29-85</p>		<p>JURUPA AVENUE STREETED TO MAGNOLIA</p>		<p>SHEET 5 OF 6</p>	
<p>HORIZ. SCALE: 1" = 20'</p>		<p>VERT. SCALE: 1" = _____</p>		<p>FILE NO. _____</p>	



SCALE: 1" = 40'

<b>CITY OF RIVERSIDE</b> <b>PUBLIC WORKS DEPARTMENT</b>		STRIPING & SIGNS FOR <b>REHABILITATION OF MAJOR CITY STREETS 1985</b>		ACCOUNT NO. 30-975-226-07
APPROVED BY PRINCIPAL ENGINEER PARK DEPARTMENT TRAFFIC DIVISION CHIEF P. W. ENGINEER	DATE 7-29-85	APPROVED BY PUBLIC WORKS DIRECTOR <i>William D. Gardner</i>	<b>JURUPA AVENUE</b> STREETER TO MAGNOLIA	
DESIGNED BY DRAWN BY CHECKED BY <i>D. Kelly</i>	REVISIONS APPR. DATE	DATE 7-29-85	HORIZ. SCALE: 1" = 40' VERT. SCALE: 1" =	
			XL-162 SHEET 6 OF 6	