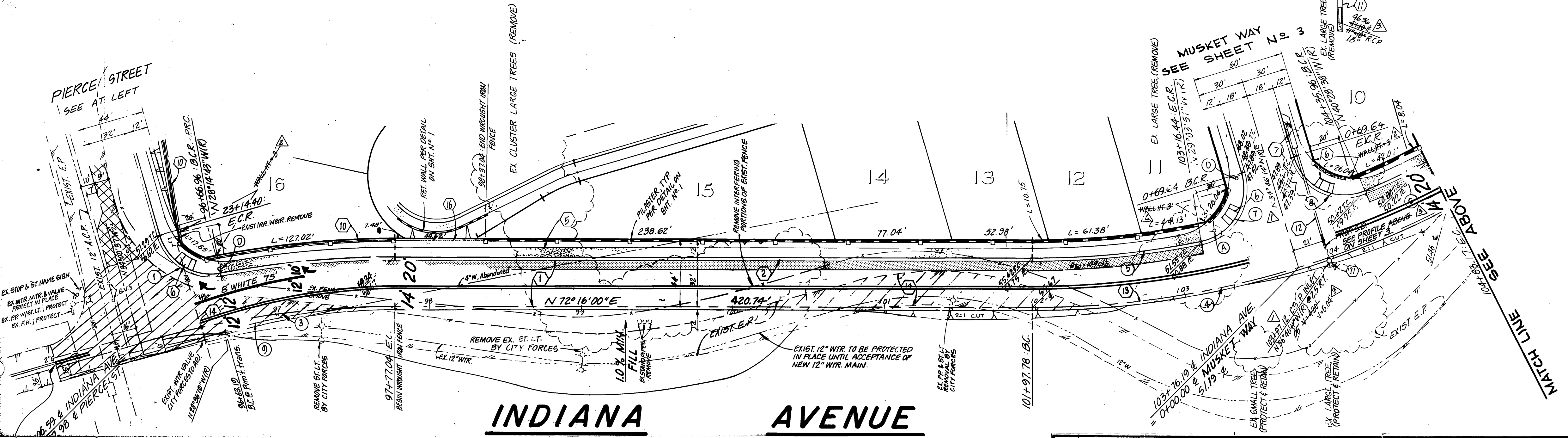


- BY DEVELOPER
- GRADING BY DEVELOPER BASE & PAVT BY CITY
- PAVEMENT OVERLAY
- PAVEMENT REMOVAL & REPLACEMENT

CURVE DATA				
NO	Δ	R	L	T
1	29° 37' 53"	532'	275.13'	140.72'
2	31° 20' 26"	500'	273.50'	140.26'
3	95° 42' 23"	35'	58.46'	38.67'
4	95° 42' 28"	35'	58.46'	38.67'
5	89° 15' 14"	27'	42.06'	26.65'
6	90° 44' 46"	27'	42.76'	27.35'

INDIANA AVENUE

96 97 98 99 100 101 102 103 104 105



INDIANA AVENUE

MATCH EXIST. STRIPING

CITY OF RIVERSIDE PUBLIC WORKS DEPARTMENT		INDIANA AVENUE STRIPING WITH TRACT 19568	ACCOUNT NO. 30-575-343-07 XL-167 SHEET 1 OF 1
APPROVED BY _____ DATE _____	APPROVED BY _____ DATE _____	HORIZ. SCALE: 1" = 40' VERT. SCALE: 1" = 10'	
PRINCIPAL ENGINEER	PUBLIC WORKS DIRECTOR		
MARK _____	DESIGNED BY _____	DATE JULY 25, 1985	
REVISIONS _____	DRAWN BY _____	ADAPTED FROM PLAN R-2671	
APPR. DATE _____	CHECKED BY _____		
TRAFFIC DIVISION	CHIEF P.W. ENGINEER		