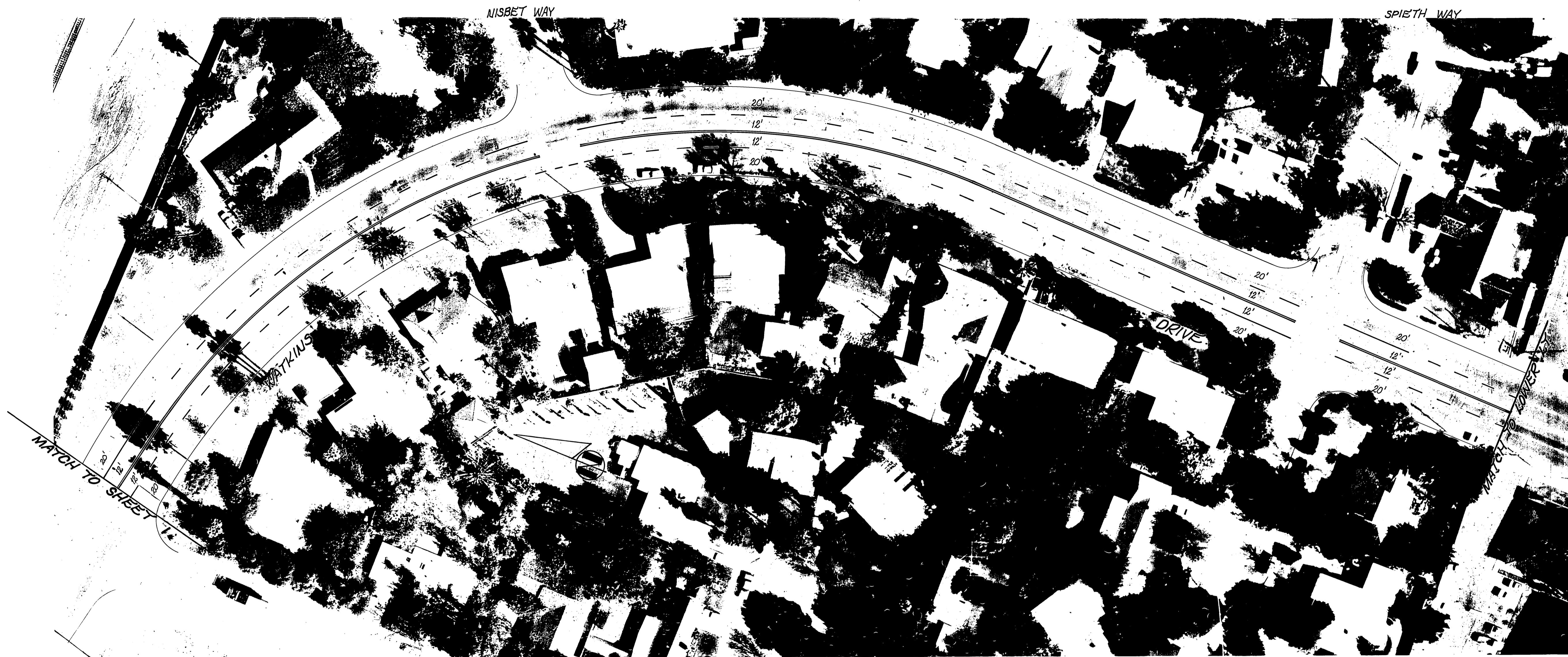
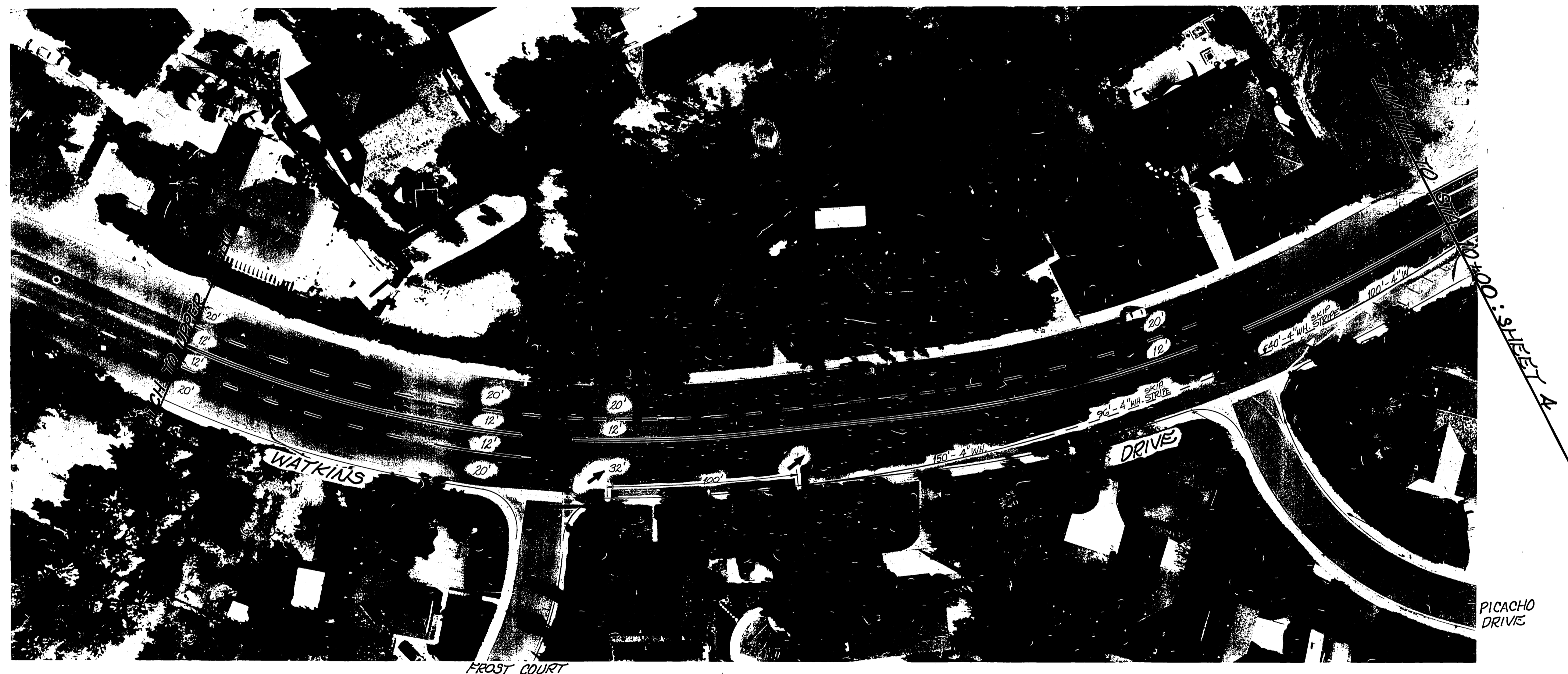


NOTES:
 1. ALL PAVT. MARKINGS TO BE WHITE UNLESS NOTED OTHERWISE.
 2. LANE LINE STRIPING PATTERN: 7' STRIPE, 17' GAP.

CITY OF RIVERSIDE PUBLIC WORKS DEPARTMENT		STRIPING AND SIGNING FOR REHABILITATION OF MAJOR CITY STREETS - 1986		ACCOUNT NO. 30-575-360-09
APPROVED BY <small>PRINCIPAL ENGINEER</small> <i>[Signature]</i>		APPROVED BY <small>PUBLIC WORKS DIRECTOR</small> <i>[Signature]</i>		XL-177 (R-274B)
<small>DESIGNED BY</small> <i>[Signature]</i>		<small>DATE</small> 7-22-86		SHEET 1 OF 4
<small>REVISIONS</small>		<small>DATE</small>		FILE NO.
<small>CHECKED BY</small> <i>[Signature]</i>		<small>HORIZ. SCALE:</small> 1" = 40'		<small>VERT. SCALE:</small> 1" = 1'



		CITY OF RIVERSIDE		STRIPING AND SIGNING FOR	
		PUBLIC WORKS DEPARTMENT		REHABILITATION OF MAJOR	
		APPROVED BY		CITY STREETS - 1986	
		PRINCIPAL ENGINEER		APPROVED BY	
		PARK DEPARTMENT		PUBLIC WORKS DIRECTOR	
		TRAFFIC DIVISION		DATE 7-22-86	
		CHIEF P. W. ENGINEER		HORIZ. SCALE: 1" = 40'	
		DESIGNED BY <i>CE/DR</i>		VERT. SCALE: 1" = 1'	
		DRAWN BY <i>DR</i>		FILE NO.	
		CHECKED BY <i>DR</i>		ACCOUNT NO. 30-575-360-09	
				XL-177	
				(R-2748)	
				SHEET 2 OF 4	



		CITY OF RIVERSIDE PUBLIC WORKS DEPARTMENT		STRIPING AND SIGNING FOR		ACCOUNT NO. 30-873-360-09	
		REHABILITATION OF MAJOR CITY STREETS - 1986		WATKINS DRIVE BLAINE TO MT. VERNON		XL-177 (R-2748)	
		APPROVED BY PRINCIPAL ENGINEER PARK DEPARTMENT TRAFFIC DIVISION CHIEF P. W. ENGINEER		APPROVED BY <i>William D. Gardner</i> PUBLIC WORKS DIRECTOR		SHEET 3 OF 4	
DESIGNED BY <i>B. J. [Signature]</i>		DRAWN BY <i>[Signature]</i>		CHECKED BY <i>[Signature]</i>		DATE 7-22-86	
MARK		REVISIONS		APPR. DATE		HORIZ. SCALE: 1" = 40'	
						VERT. SCALE: 1" = 1'	
						FILE NO.	

