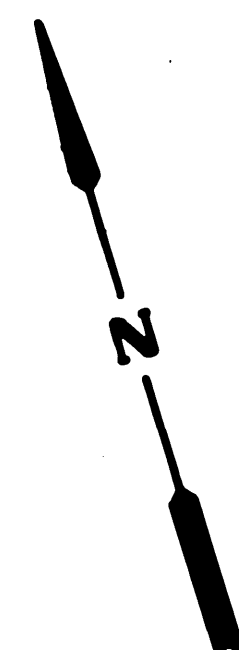
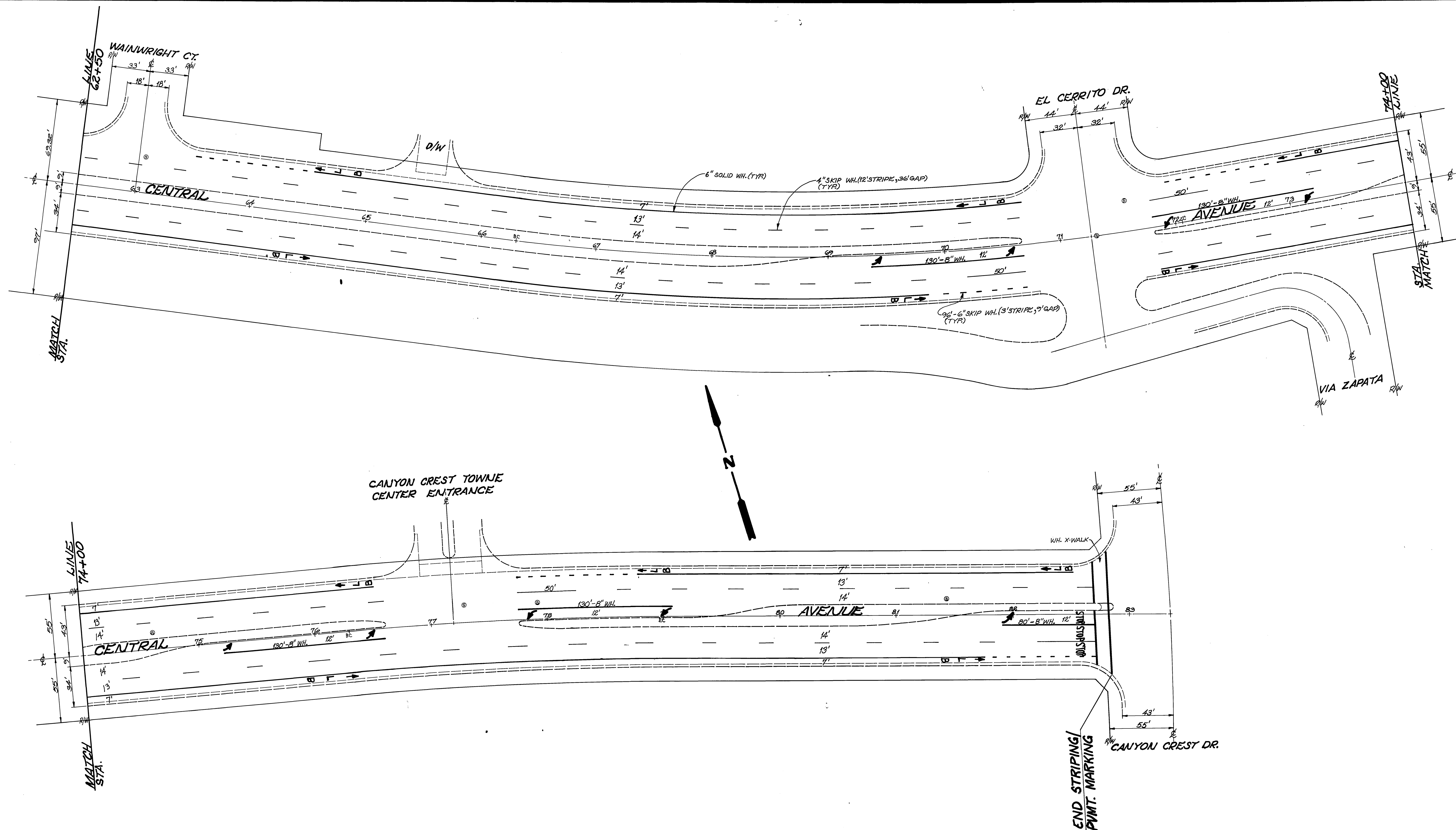


CITY OF RIVERSIDE PUBLIC WORKS DEPARTMENT			STRIPING & SIGNING FOR REHABILITATION OF MAJOR CITY STREETS 1988-1989 CENTRAL AVENUE CHICAGO TO CANYON CREST		ACCOUNT NO. 20-515-340-09 XL-213 (R-2945) SHEET 1 OF 2
APPROVED BY PRINCIPAL ENGINEER DATE 7-18-89 TRAFFIC DIVISION CHIEF P. W. INSPECTOR SURVEYOR	APPROVED BY PUBLIC WORKS DIRECTOR DATE 8/12/88	DESIGNED BY <i>bc</i> DRAWN BY <i>bc</i> CHECKED BY <i>bc</i>	HORIZ. SCALE: 1" = 40'		

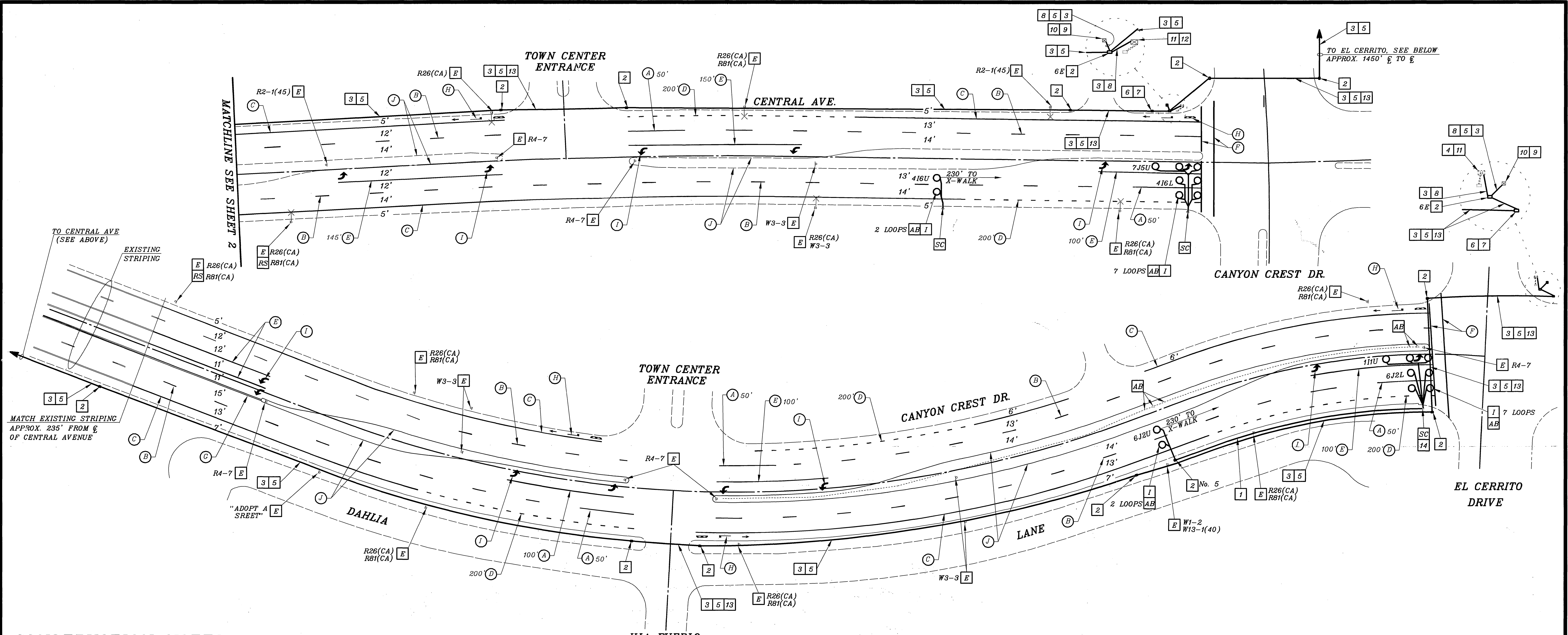


MARK	REVISIONS	APPR. DATE
DESIGNED BY <i>Bc</i>	DRAWN BY <i>Bc</i>	CHECKED BY <i>Bc</i>

CITY OF RIVERSIDE PUBLIC WORKS DEPARTMENT	
APPROVED BY	DATE
PRINCIPAL ENGINEER	7-17-88
TRAFFIC DIVISION	7/14/88
CHIEF P. W. INSPECTOR	
SURVEYOR	

STRIPING & SIGNING FOR REHABILITATION OF MAJOR CITY STREETS 1988-1989 CENTRAL AVENUE CHICAGO TO CANYON CREST HORIZ. SCALE: 1" = 40'
--

ACCOUNT NO. 80-575-240-03
XL-213 (R-2945)
SHEET 2 OF 2

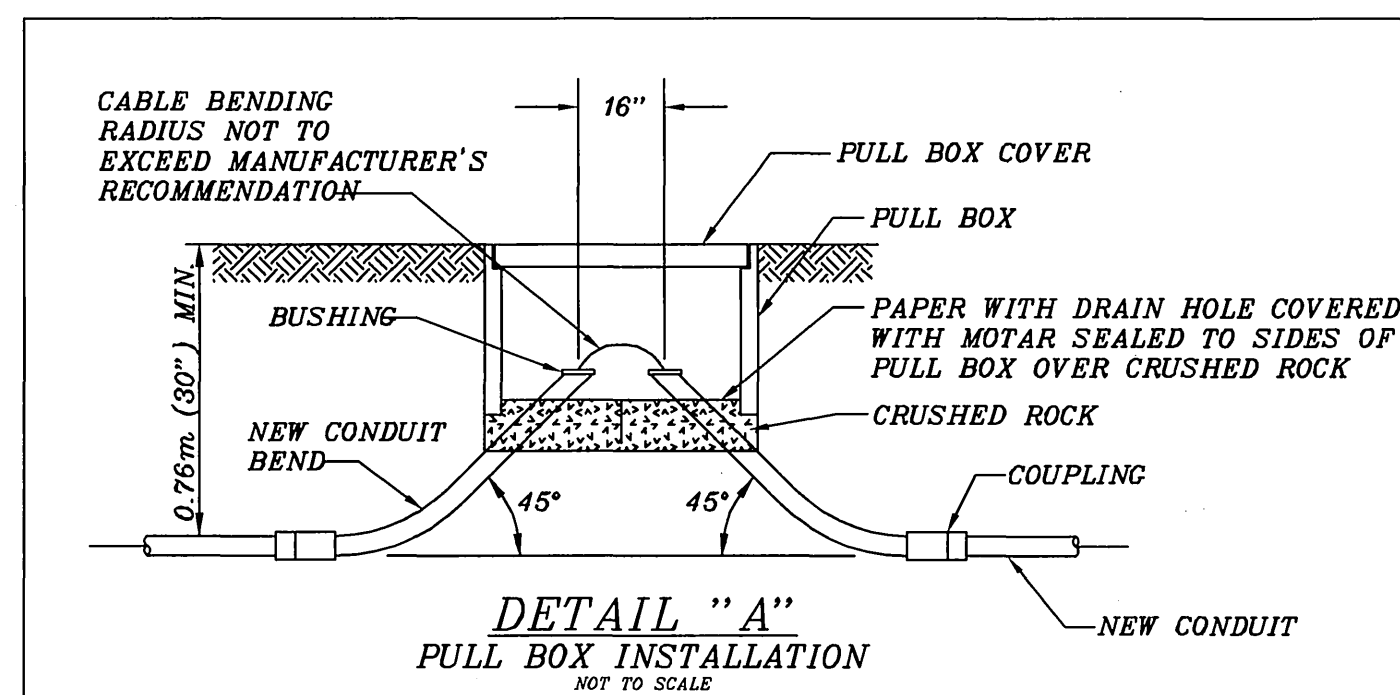


CONSTRUCTION NOTES

- 1 INSTALL "TYPE E" DETECTOR LOOPS UNLESS OTHERWISE NOTED. SPLICE TO DLC(S) AT ADJACENT PULLBOX. UNLESS OTHERWISE NOTED.
- 2 SPLICE NEW TO EXISTING CONDUCTORS
- 3 ABANDON EXISTING EQUIPMENT
- 4 REMOVE AND SALVAGE EXISTING EQUIPMENT TO CITY YARD
- 5 EXISTING EQUIPMENT, PROTECT IN PLACE
- 6 INSTALL 2" C, APPROXIMATELY 230'. INSTALL 1-DLC FOR 6J2U LOOPS, APPROXIMATELY 440' TO CONTROLLER CABINET.
- 7 INSTALL No. 6 PULL BOX AT 400' MAXIMUM SPACING (UNLESS OTHERWISE NOTED) PER DETAIL "A". PULL BOX LIDS SHALL BE LABELED "COMMUNICATION"
- 8 INSTALL NEW 4-1" HIGH DENSITY POLYETHYLENE (HDPE) CONDUITS PER SPECIAL PROVISIONS.
- 9 INSTALL INTERCONNECT CONDUIT INTO CONTROLLER CABINET PER DETAIL "B" ON PLAN XL-213, SHEET 1
- 10 INSTALL 72 STRAND SINGLE-MODE FIBER OPTIC CABLE IN PROPOSED CONDUIT AS NOTED. COIL 10' OF SLACK IN EACH No. 6 PULL BOX, UNLESS OTHERWISE NOTED.
- 11 INSTALL FIBER OPTIC VAULT EQUIPPED WITH CABLE RACKS.
- 12 COIL AND TERMINATE 300' OF 72 STRAND SINGLE-MODE FOC IN PROPOSED FIBER OPTIC VAULT.
- 13 INSTALL 1-6 PR #19 SIC AND PATCH PANEL IN PROPOSED CONDUIT (FROM SPLICE ENCLOSURE TO CONTROLLER CABINET)
- 14 INSTALL UNDERGROUND SPLICE CLOSURE
- 15 TERMINATE 1-6 PR #19 IN SPLICE CABINET
- 16 FURNISH AND INSTALL FIBER OPTIC TRANSMITTER/TRANSRECEIVER AND FIBER PATCH PANEL IN CONTROLLER CABINET. PATCH PANEL SHALL TERMINATE IN SPLICE CABINET. FURNISH ALL THE NECESSARY EQUIPMENT AND APPURTENANCES TO PROVIDE THE INTENDED OPERATION.
- 17 REMOVE AND SALVAGE TO CITY YARD EXISTING TYPE 90 CONTROLLER AND TYPE "P" CABINET. FURNISH AND INSTALL NEW 170E CONTROLLER HOUSED IN MODEL 332 CABINET ON NEW FOUNDATION. REMOVE EXISTING FOUNDATION COMPLETELY.
- 18 INSTALL CONDUIT PER JACK AND BORE METHOD
- 19 INSTALL NEW DLC FOR LOOPS 11U IN EXISTING CONDUIT. APPROXIMATELY 200' TO CONTROLLER CABINET.

PAVEMENT DELINEATION

INDICATES STRIPING AND PAVEMENT MARKINGS TO BE INSTALLED.
 INDICATES STRIPING AND PAVEMENT MARKINGS TO REMAIN.
NOTE: ALL PAVEMENT DELINEATION WORK SHALL BE PERFORMED BY THE CONTRACTOR. REMOVE ALL CONFLICTING STRIPING, LEGENDS AND MARKINGS.



GENERAL NOTES

- 1 ALL PAVEMENT DELINEATION REQUIREMENTS SHALL BE COMPLETED AT LEAST ONE DAY PRIOR TO TURN ON.
- 2 ALL STRIPING AND PAVEMENT MARKINGS SHALL BE THERMOPLASTIC.
- 3 ALL CONFLICTING STRIPING, MARKINGS AND LEGENDS SHALL BE REMOVED BY GRINDING AND OVERLAY OF ROADWAY OR AS DETERMINED BY THE ENGINEER.
- 4 PROTECT IN PLACE ALL MEDIAN PULL BOXES. CONTRACTOR SHALL REPLACE PULL BOXES, CONDUITS, CONDUCTORS OR OTHER TRAFFIC FACILITIES IF DAMAGED.
- 5 CONTRACTOR SHALL RE-INSTALL ANY SIGNAGE THAT WAS REMOVED DURING CONSTRUCTION.
- 6 IT IS THE CONTRACTOR'S RESPONSIBILITY TO PROVIDE THE CORRECT CONDUCTORS, DLC(S), DETECTOR CHANNELS, ETC. FOR THE INTENDED OPERATIONS. THE CONTRACTOR SHALL FIELD VERIFY EXISTING PULL BOXES AND TRAFFIC FACILITIES TO ENSURE PROPER OPERATION.
- 7 DETECTOR LOOPS SHALL BE INSTALLED IN THE PRESENCE OF THE TRAFFIC ENGINEER OR HIS REPRESENTATIVE.
- 8 TYPICAL DETECTOR LOOP SPACING: 10', 15' AND 30' (WHERE APPLICABLE).
- 9 THE CONTRACTOR SHALL BE RESPONSIBLE FOR VERIFYING ALL UNDERGROUND UTILITIES INCLUDING THE ACTUAL LOCATION AND ELEVATION. IF REQUIRED, IN THE FIELD PRIOR TO BEGINNING CONSTRUCTION OF THE NEW IMPROVEMENTS INCLUDING FIBER OPTIC CABLE INSTALLATION.

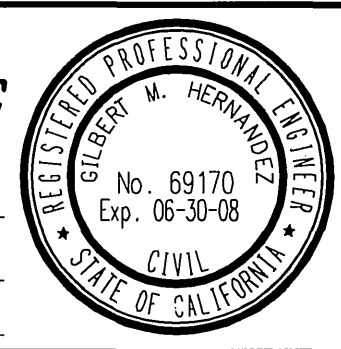
LEGEND

- INDICATES NEW SIGN(S) AND POST (IF APPLICABLE) TO BE FURNISHED AND INSTALLED BY CONTRACTOR PER STD. DWG. NO. 666.
- PROPOSED UNDERGROUND SPLICE CLOSURE

STRIPING LEGEND

- (INSTALL CALTRANS DETAIL PER NOTE NOTED, INCLUDING INSTALLATION OF PAVEMENT MARKERS)
- A 4" SOLID WHITE STRIPE (STD. PLAN A20A)
 - B 4" DASH WHITE STRIPE (STD. PLAN A20A, DETAIL 12)
 - C 6" SOLID WHITE STRIPE (STD. PLAN A20D, DETAIL 39)
 - D 6" DASH WHITE STRIPE (STD. PLAN A20D, DETAIL 39A)
 - E 8" SOLID WHITE STRIPE (STD. PLAN A20D, DETAIL 38)
 - F 12" SOLID WHITE STRIPE (STD. PLAN A24E)
 - G DOUBLE YELLOW STRIPE (STD. PLAN A20A, DETAIL 22)
 - H SOLID WHITE "BIKE LANE" STENCIL AND ARROW
 - I SOLID WHITE ARROW (STD. PLAN A24A, TYPE IV)
 - J SOLID YELLOW LEFT EDGELINE STRIPE (STD. PLAN A20B, DETAIL 25A)
 - K LANE DROP AT INTERSECTION STRIPE (STD. PLAN A20C, DETAIL 37B)

ENGINEER IN RESPONSIBLE CHARGE
 GILBERT M. HERNANDEZ
 R.C.E. No. 69170 expires 6-30-08
 DATE 12-P-06



MARK	REVISIONS	APPR.	DATE

CITY OF RIVERSIDE, CALIFORNIA
DEPARTMENT OF PUBLIC WORKS
 APPROVED BY: [Signature]
 PRINCIPAL ENGINEER
 TRAFFIC DIVISION
 DATE: 2/11/06

SIGNING & STRIPING / SIC PLAN
CENTRAL AVENUE FROM CHICAGO AVE. TO CANYON CREST DR.
 SCALE: 1" = 40'

ACCT. NO. **XL-213**
 SHEET **3** OF **3**
 FILE NAME: XL213-3.DWG