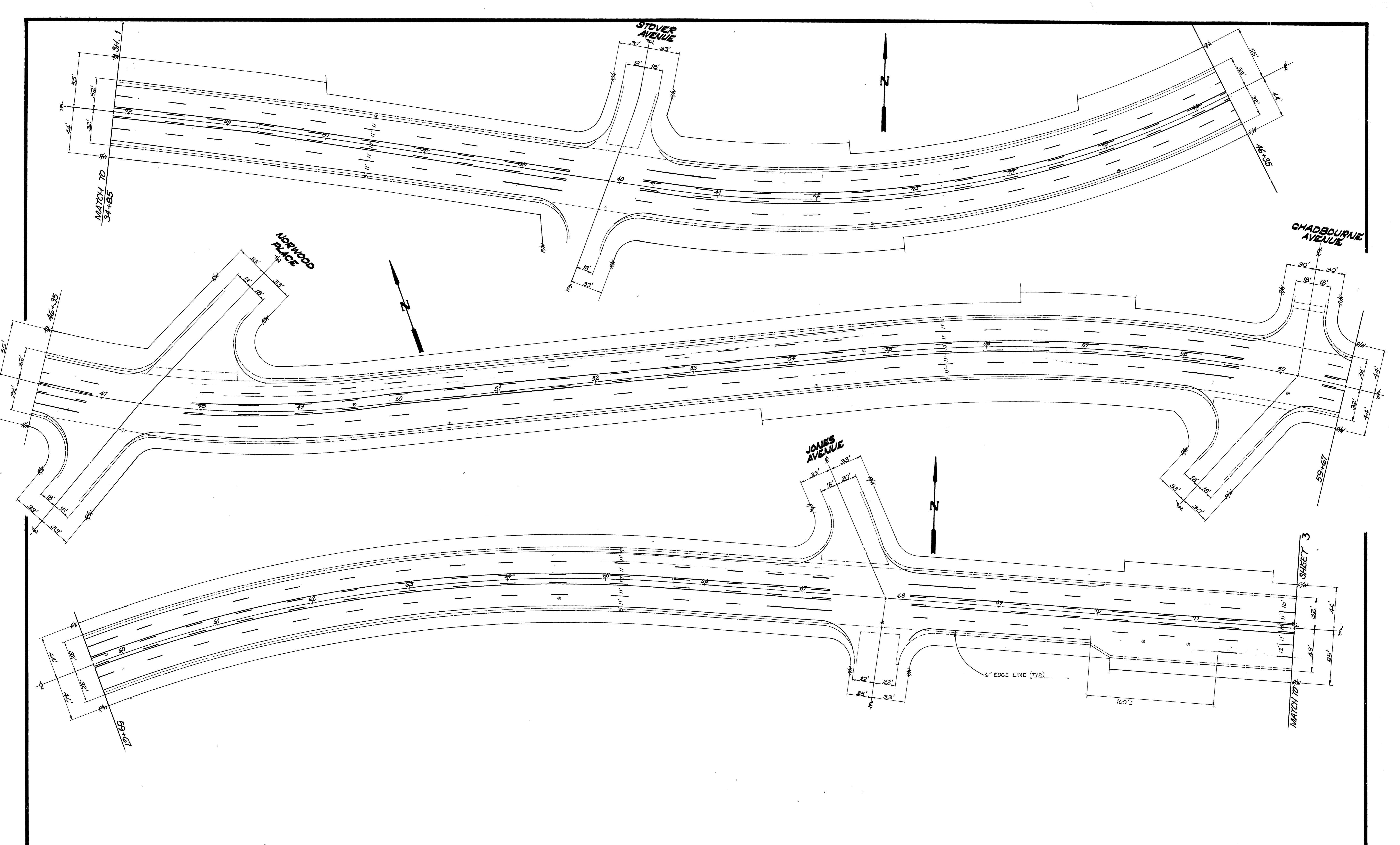


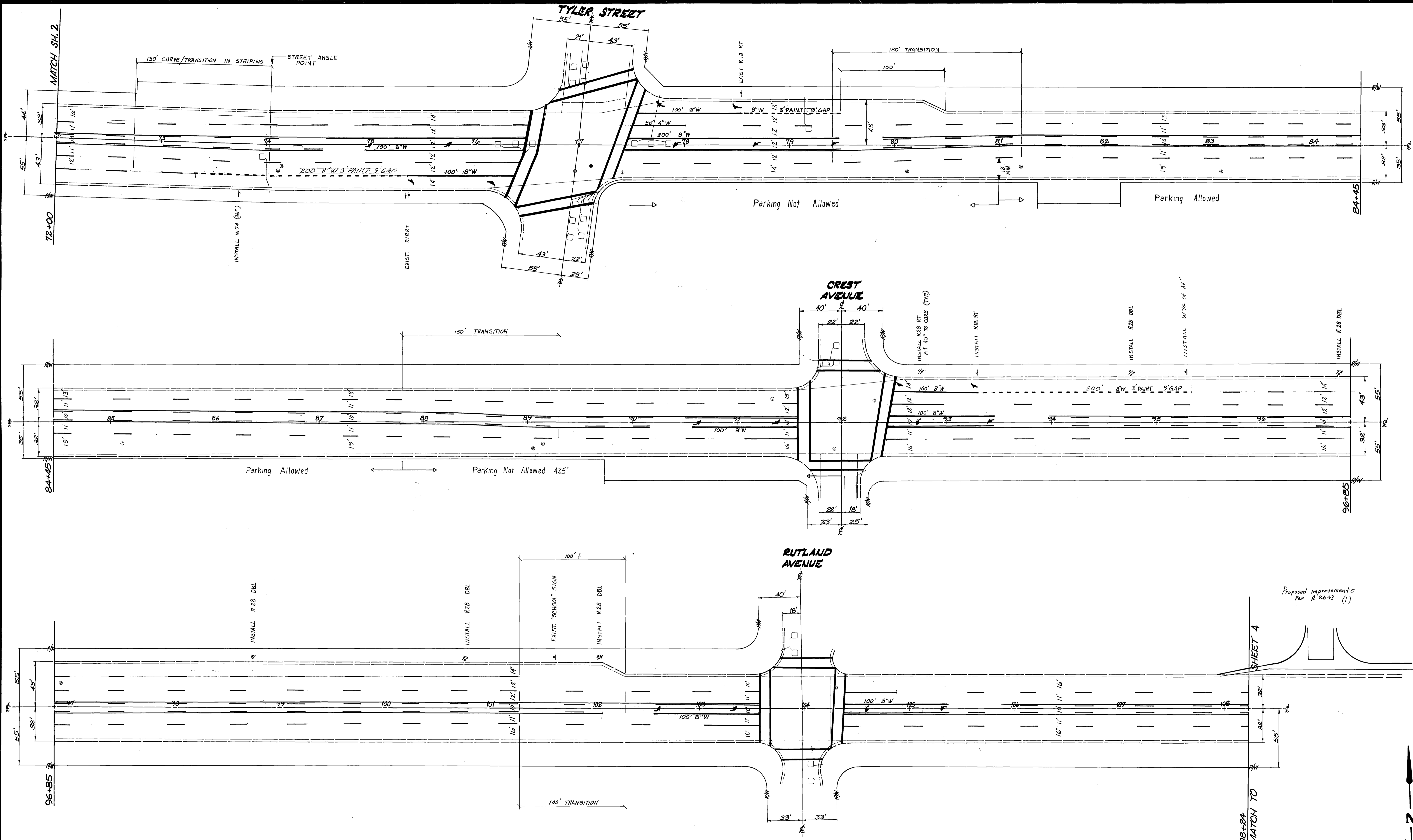
NOTE: RAISED REFLECTIVE MARKERS FROM LA SIERRA TO 200' E OF JONES -
 1) 2-WAY TURN LANE: 2-WAY AMBER 24' O.C. OUTSIDE, 48' O.C. INSIDE
 2) 8" BARRIER LINES: 1-WAY CLEAR 24' O.C.
 3) LANE LINES (7 SOLID 4" WHITE): 1-WAY CLEAR 48' O.C.
 ALSO SEE NOTES SHEET 4'S FOR ADDITIONAL MARKERS.

SPEED LIMIT IS 45 MPH.
 LANE LINE STRIPING 15' 12" PAINT, 36" GAP

CITY OF RIVERSIDE PUBLIC WORKS DEPARTMENT		REHABILITATION OF MAJOR CITY STREETS 1984		ACCOUNT NO. 30-575-244-07
APPROVED BY PRINCIPAL ENGINEER PANK DEPARTMENT TRAFFIC DIVISION CHIEF P. W. ENGINEER	DATE 8/23/84	APPROVED BY [Signature] PUBLIC WORKS DIRECTOR	DATE 8-27-84	ARLINGTON AVENUE LA SIERRA TO VAN BUREN
DESIGNED BY: D. Ray DRAWN BY: [Signature] CHECKED BY: D. L.		HORIZ. SCALE: 1" = 40' VERT. SCALE: 1" =		XL-27 SHEET 1 OF 5

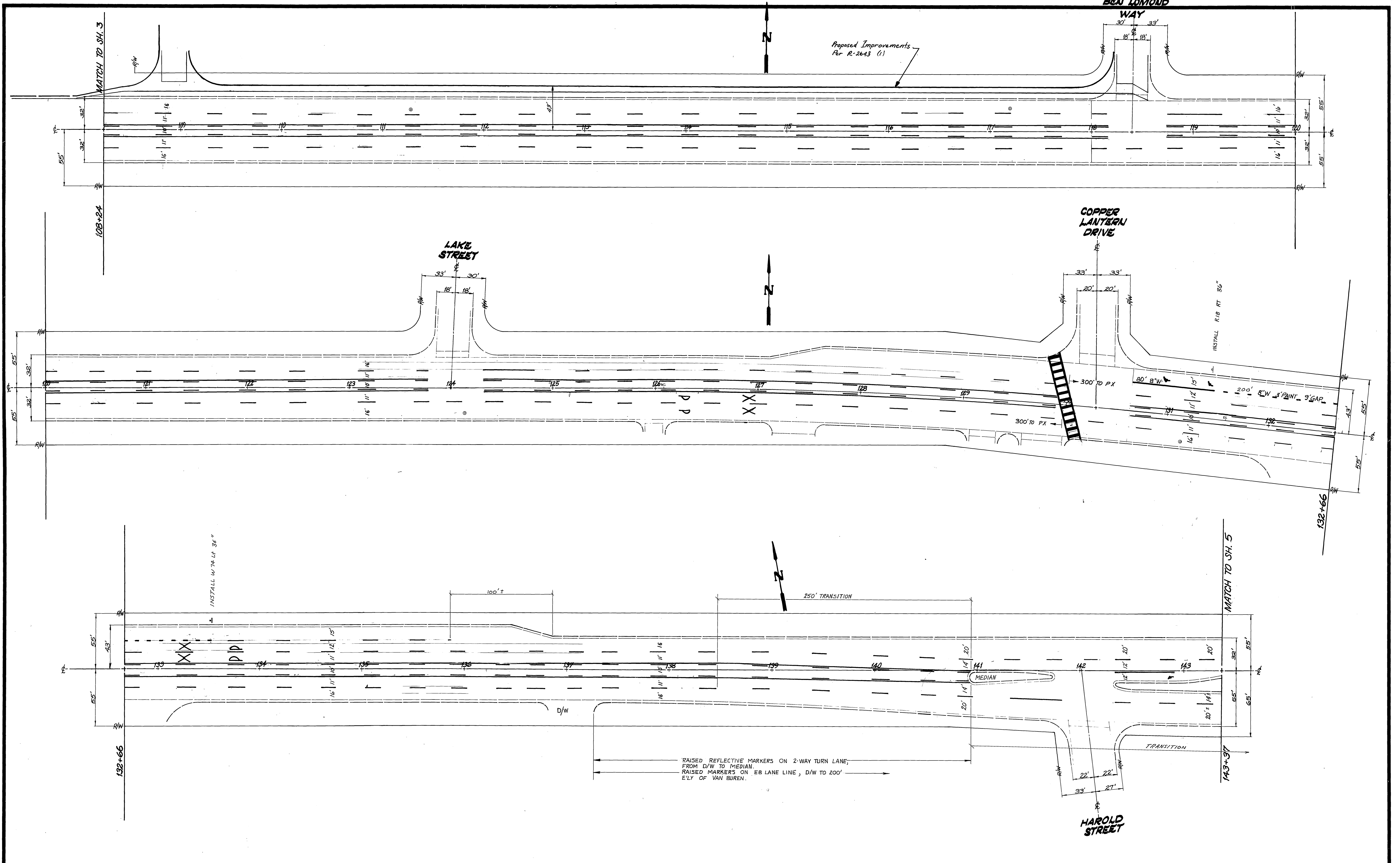


		CITY OF RIVERSIDE		REHABILITATION OF MAJOR CITY STREETS 1984		ACCOUNT NO. 30-075-244-07	
		PUBLIC WORKS DEPARTMENT		ARLINGTON AVENUE		XL-27	
				LA SIERRA TO VAN BUREN		SHEET 2 OF 5	
		APPROVED BY		DATE		APPROVED BY	
		PRINCIPAL ENGINEER		8/27/84		PUBLIC WORKS DIRECTOR	
		TRAFFIC DIVISION				DATE 8-27-84	
		CHIEF P. W. ENGINEER				HORIZ. SCALE: 1" = 40'	
		DESIGNED BY <i>D. B. S.</i>		DRAWN BY <i>A. H. S.</i>		VERT. SCALE: 1" =	
		CHECKED BY <i>D. B. S.</i>					



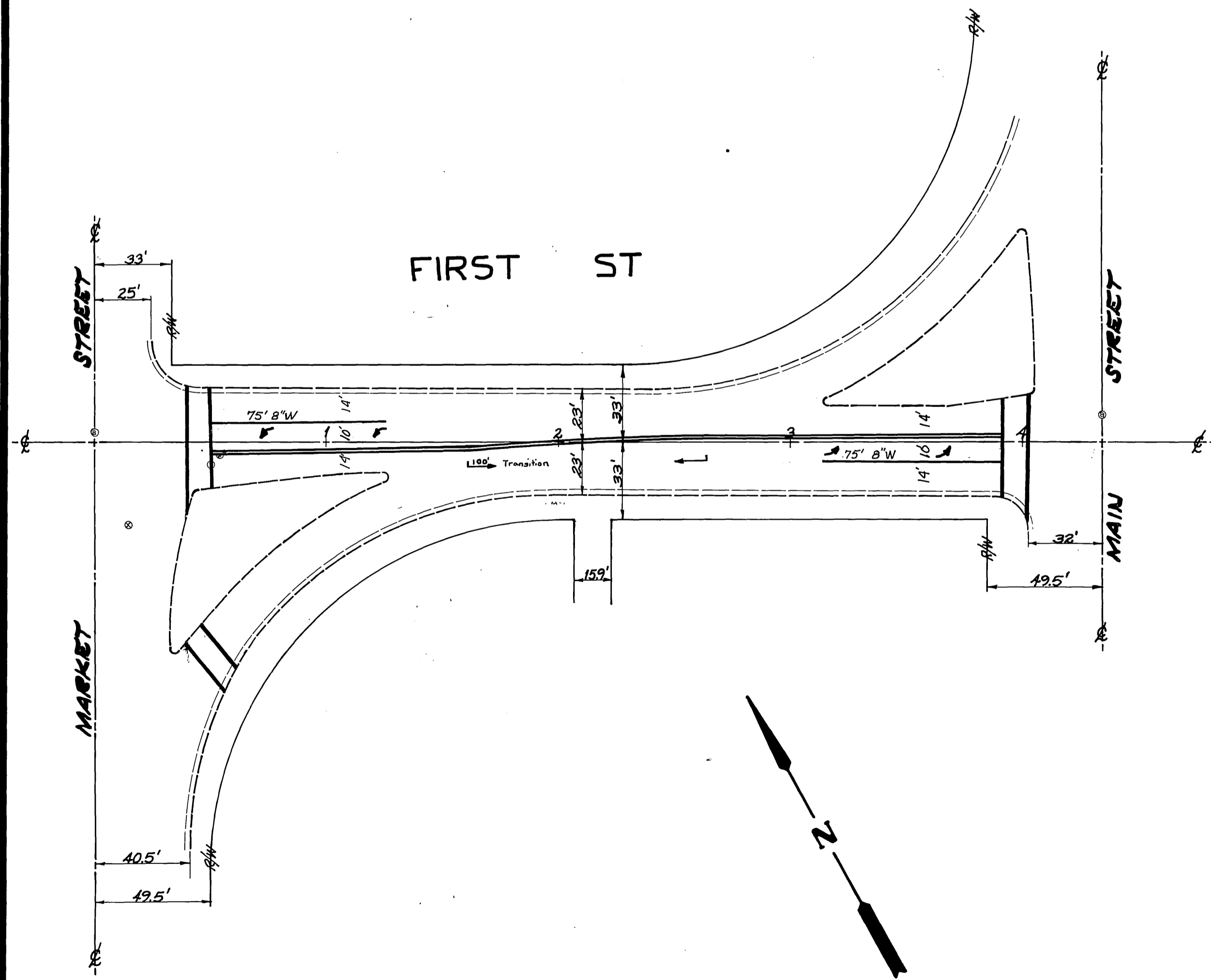
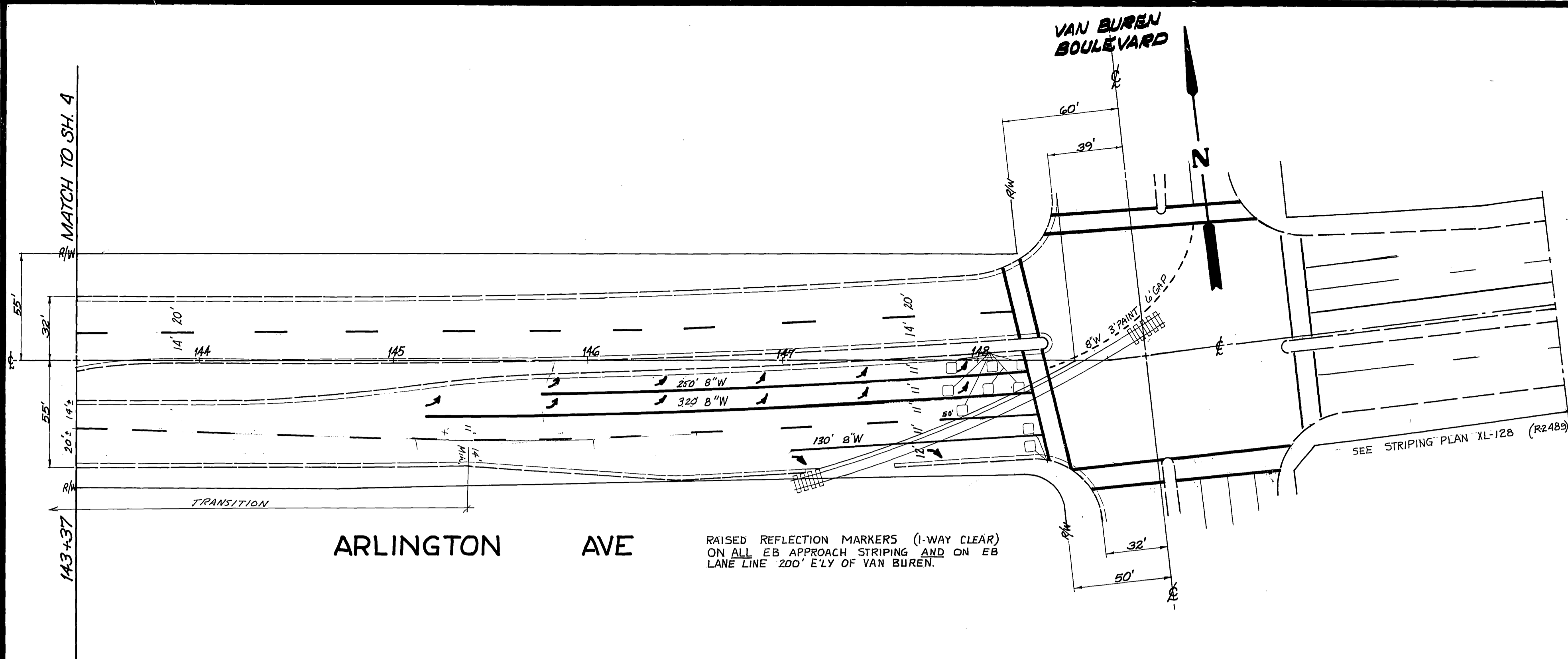
Proposed improvements
Per R 2643 (1)

<p>CITY OF RIVERSIDE PUBLIC WORKS DEPARTMENT</p>		<p>REHABILITATION OF MAJOR CITY STREETS 1984</p>		<p>ACCOUNT NO. 30-275-244-07</p>
<p>APPROVED BY: <i>[Signature]</i> DATE: 8/23/84</p>		<p>APPROVED BY: <i>[Signature]</i> DATE: 8/27-84</p>		<p>XL-27</p>
<p>PRINCIPAL ENGINEER: <i>[Signature]</i></p>		<p>PARK DEPARTMENT: <i>[Signature]</i></p>		<p>SHEET 3 OF 5</p>
<p>TRAFFIC DIVISION: <i>[Signature]</i></p>		<p>CHIEF P.W. ENGINEER: <i>[Signature]</i></p>		<p>HORIZ. SCALE: 1" = 40'</p>
<p>DESIGNED BY: <i>[Signature]</i> DRAWN BY: <i>[Signature]</i> CHECKED BY: <i>[Signature]</i></p>		<p>DATE: 8-27-84</p>		<p>VERT. SCALE: 1" =</p>



RAISED REFLECTIVE MARKERS ON 2-WAY TURN LANE, FROM D/W TO MEDIAN.
 RAISED MARKERS ON EB LANE LINE, D/W TO 200' ELY OF VAN BUREN.

CITY OF RIVERSIDE PUBLIC WORKS DEPARTMENT		REHABILITATION OF MAJOR CITY STREETS 1984 ARLINGTON AVENUE LA SIERRA TO VAN BUREN		ACCOUNT NO. 30-575-244-07 XL-27 SHEET 4 OF 5
APPROVED BY PRINCIPAL ENGINEER <i>[Signature]</i>	DATE 8/23/84	APPROVED BY PUBLIC WORKS DIRECTOR <i>[Signature]</i>	DATE 8-27-84	HORIZ. SCALE: 1" = 40' VERT. SCALE: 1" =
(1) REVISED PER R-2643 REVISIONS APPX DATE	DESIGNED BY D. Ray DRAWN BY A. Walker CHECKED BY D.R.	TRAFFIC DIVISION CHIEF P. W. ENGINEER	PUBLIC WORKS DIRECTOR	HORIZ. SCALE: 1" = 40' VERT. SCALE: 1" =



CITY OF RIVERSIDE PUBLIC WORKS DEPARTMENT				REHABILITATION OF MAJOR CITY STREETS 1984 ARLINGTON AVENUE LA SIERRA TO VAN BUREN		ACCOUNT NO. 30-575-244-07
				FIRST STREET MARKET TO MAIN		XL-27
APPROVED BY	DATE	BY	APPROVED BY	DATE		HORIZ. SCALE: 1" = 40' VERT. SCALE: 1" =
PRINCIPAL ENGINEER	8/23/84	J	PUBLIC WORKS DIRECTOR	8-27-84		
PARK DEPARTMENT						
TRAFFIC DIVISION						
CHIEF P.W. ENGINEER						
MARK	REVISIONS	APPR. DATE	DESIGNED BY: <i>D. P.</i> DRAWN BY: <i>J.M./R.D.</i> CHECKED BY: <i>D.P.</i>			