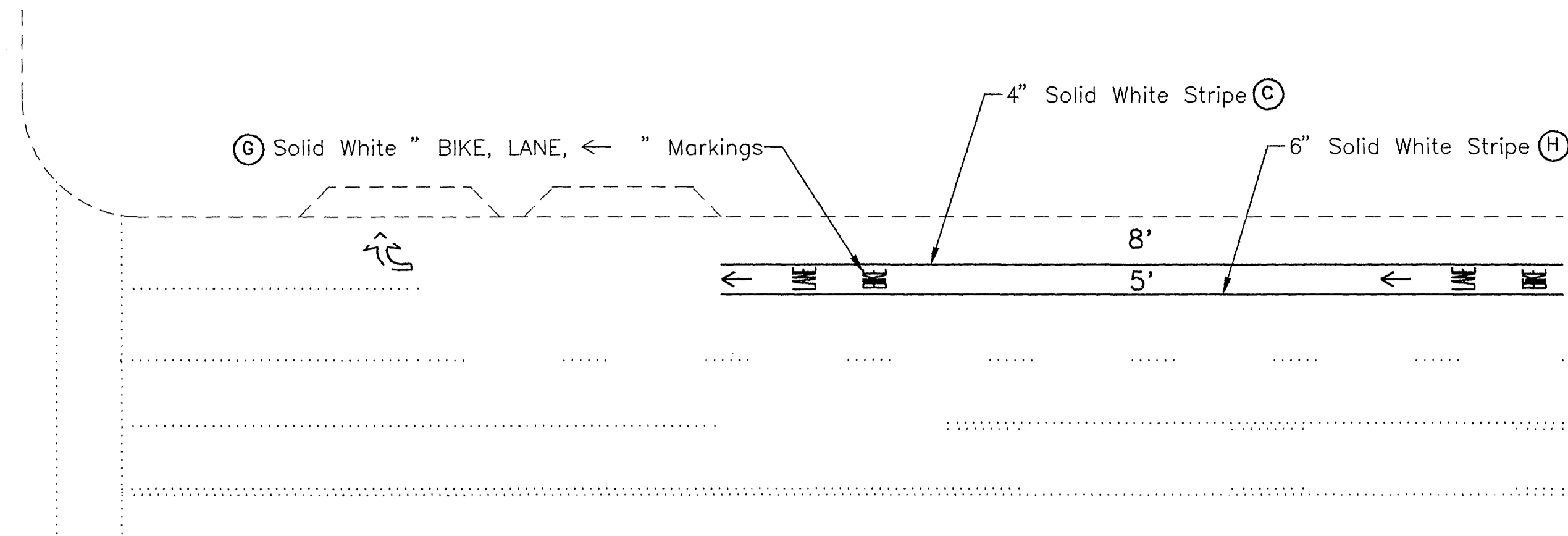
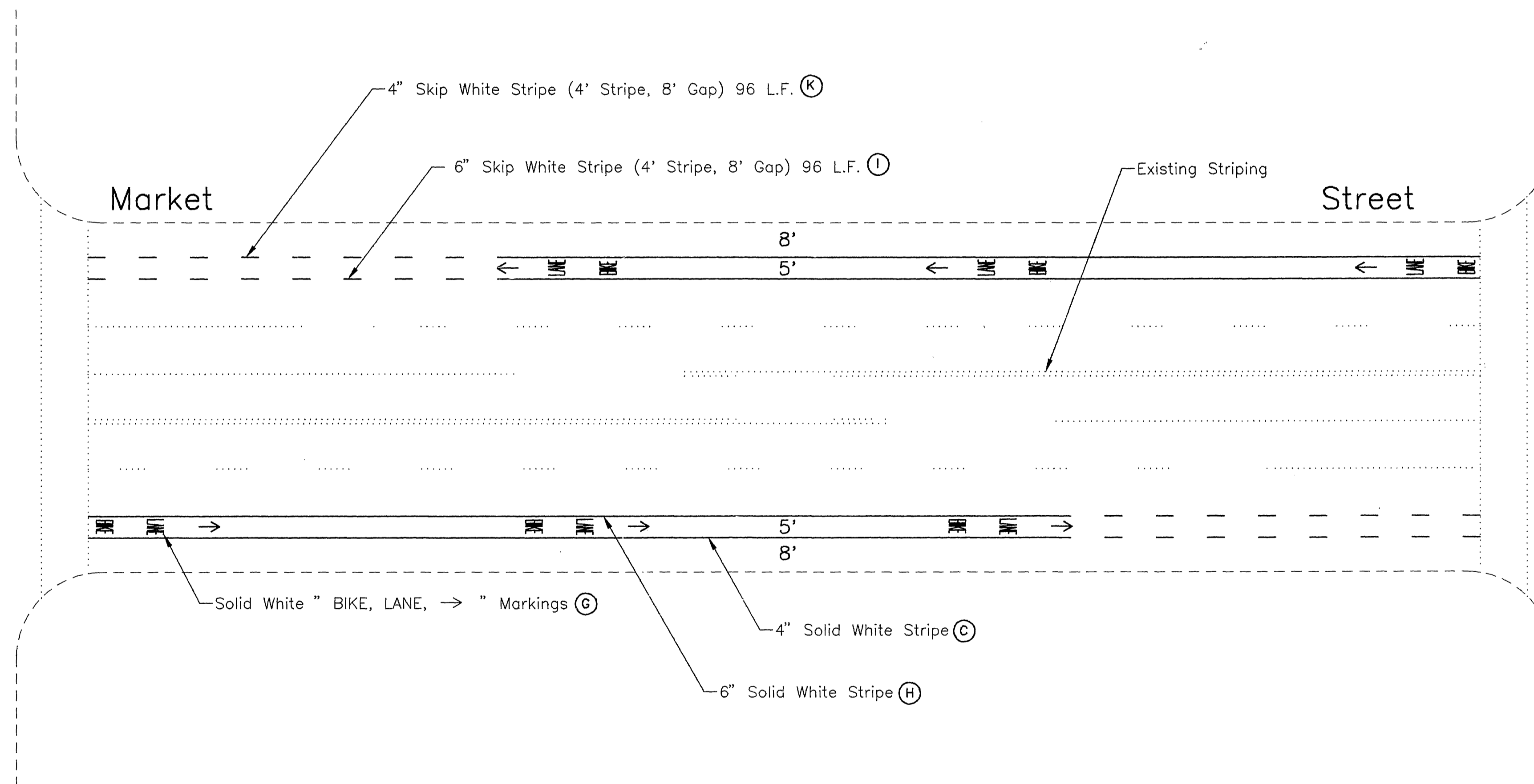
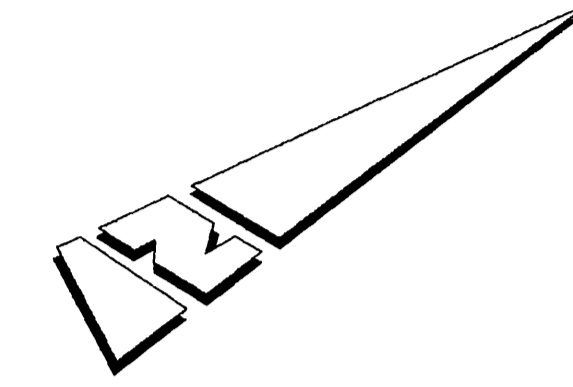


14th Street



Market St. @ 14th St.

SB Approach

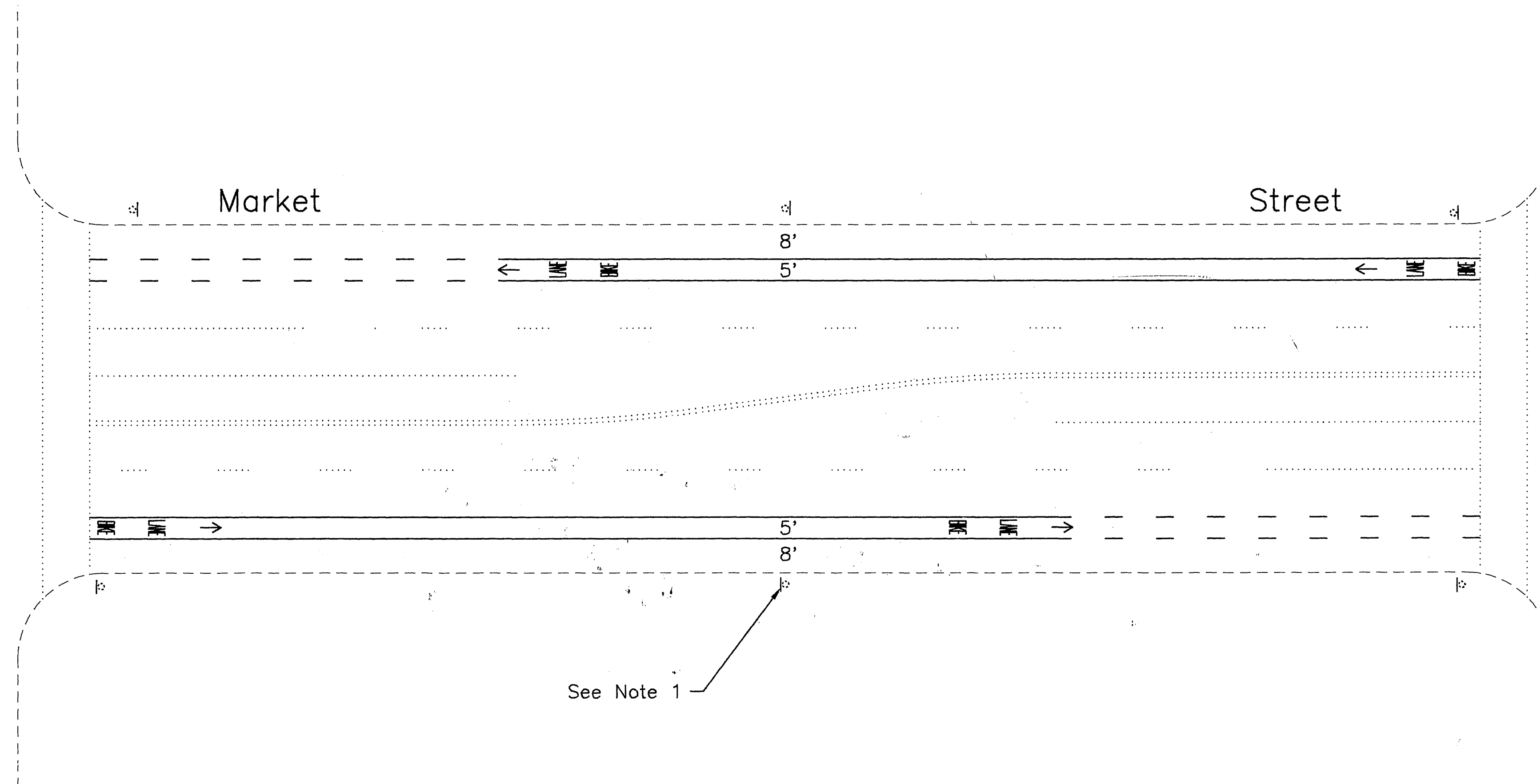
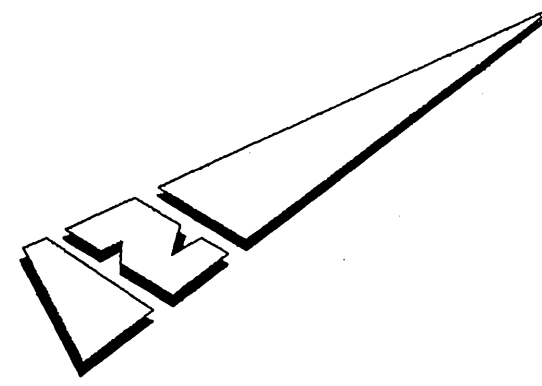


Market St. – Typical Bike Lane Striping & Markings

14th St. to 9th St. and 6th St. to 3rd St.

CITY OF RIVERSIDE DEPARTMENT OF PUBLIC WORKS TRAFFIC ENGINEERING DIVISION		STRIPING & MARKING PLAN	SCALE : N.T.S.
DESIGN : Bob G. DRAWN : Bob G. CHECKED : Bob G. REVISIONS :		MARKET ST. BIKE LANE 14TH ST. TO 3RD ST.	XL-317
APPROVED BY : <i>[Signature]</i> CITY TRAFFIC ENGINEER		DATE : 4/6/93	SHEET 1 OF 3





Market St. – Typical Bike Lane Signing

14th St. to 3rd St.

Note:

1. Install R81 sign below existing R26 or R32 sign.  
(Typical 3 places for each direction, per block.)

CITY OF RIVERSIDE DEPARTMENT OF PUBLIC WORKS TRAFFIC ENGINEERING DIVISION		SIGNING PLAN	SCALE : N.T.S.
DESIGN : Bob G.	APPROVED BY : <i>[Signature]</i>	MARKET ST. BIKE LANE 14TH ST. TO 3RD ST.	XL-317
DRAWN : Bob G.	CITY TRAFFIC ENGINEER DATE 5/6/23		
CHECKED : Bob G.	REVISIONS : -	SHEET 3 OF 3	