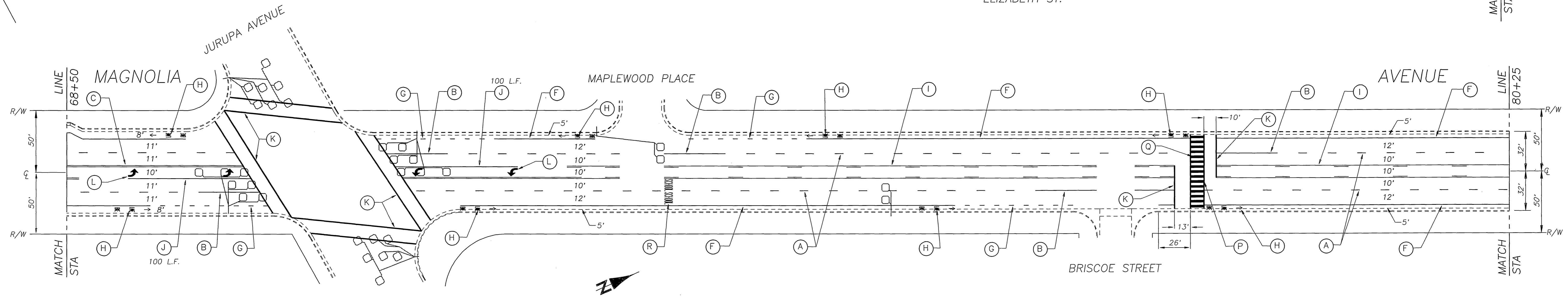
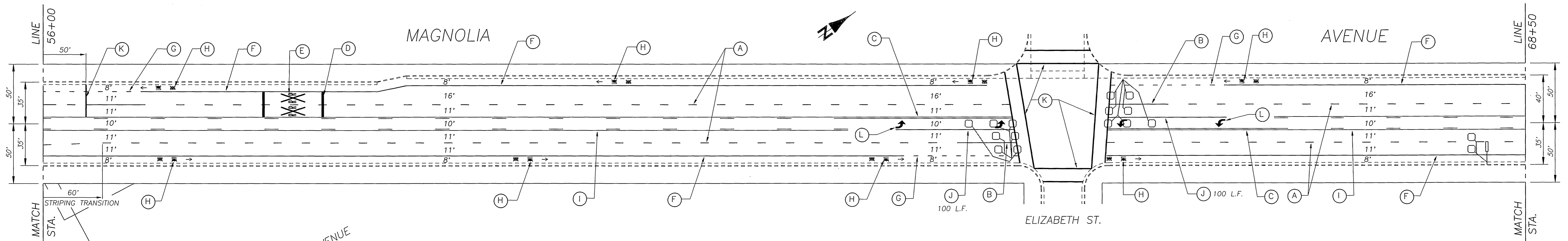
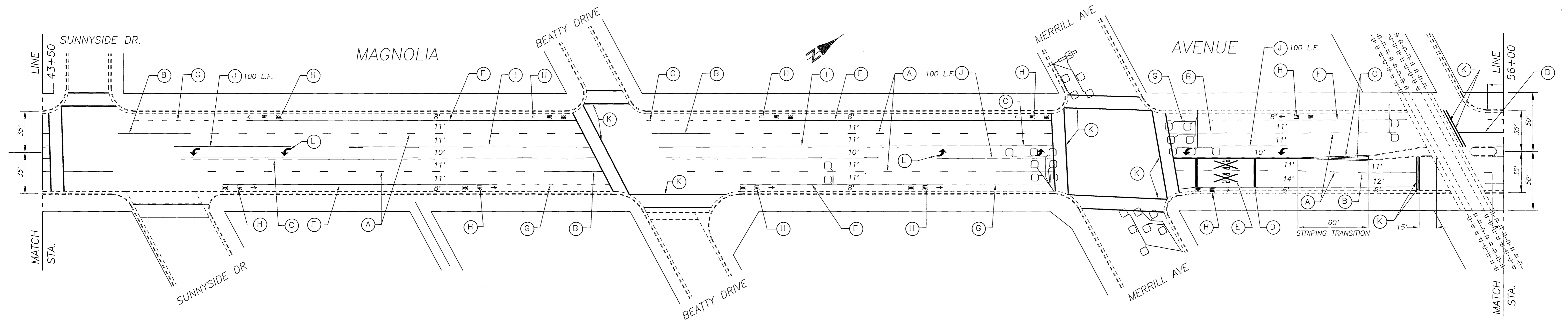


STRIPING & MARKING LEGEND

- (A) 4" SKIP WHITE STRIPE (7' STRIPE, 17' GAP) WITH TYPE G ONE-WAY CLEAR REFLECTIVE MARKERS AT 24" SPACING.
- (B) 4" SOLID WHITE STRIPE (50 L.F.) WITH TYPE G ONE-WAY CLEAR REFLECTIVE MARKERS AT 24" SPACING.
- (C) 4" SOLID DOUBLE YELLOW STRIPE WITH TYPE D TWO-WAY YELLOW REFLECTIVE MARKERS AT 24" SPACING.
- (D) 24" SOLID WHITE MARKING
- (E) SOLID WHITE "R X R" MARKING
- (F) 6" SOLID WHITE STRIPE
- (G) 6" SKIP WHITE STRIPE (4' STRIPE, 8' GAP) 96 L.F.
- (H) SOLID WHITE "BIKE LANE, →" MARKING
- (I) YELLOW TWO-WAY TURN LANE WITH TYPE D TWO-WAY YELLOW REFLECTIVE MARKERS AT 24" SPACING (OUTSIDE) & 48" SPACING ALTERNATELY (INSIDE).
- (J) 8" SOLID WHITE STRIPE WITH TYPE G ONE-WAY CLEAR REFLECTIVE MARKERS AT 24" SPACING.
- (K) 12" SOLID WHITE MARKING
- (L) SOLID WHITE ARROW
- (S) INSTALL TYPE A WHITE NON-REFLECTIVE MARKERS AT 4' SPACING FOR LANE LINE EXTENSION THROUGH INTERSECTION.

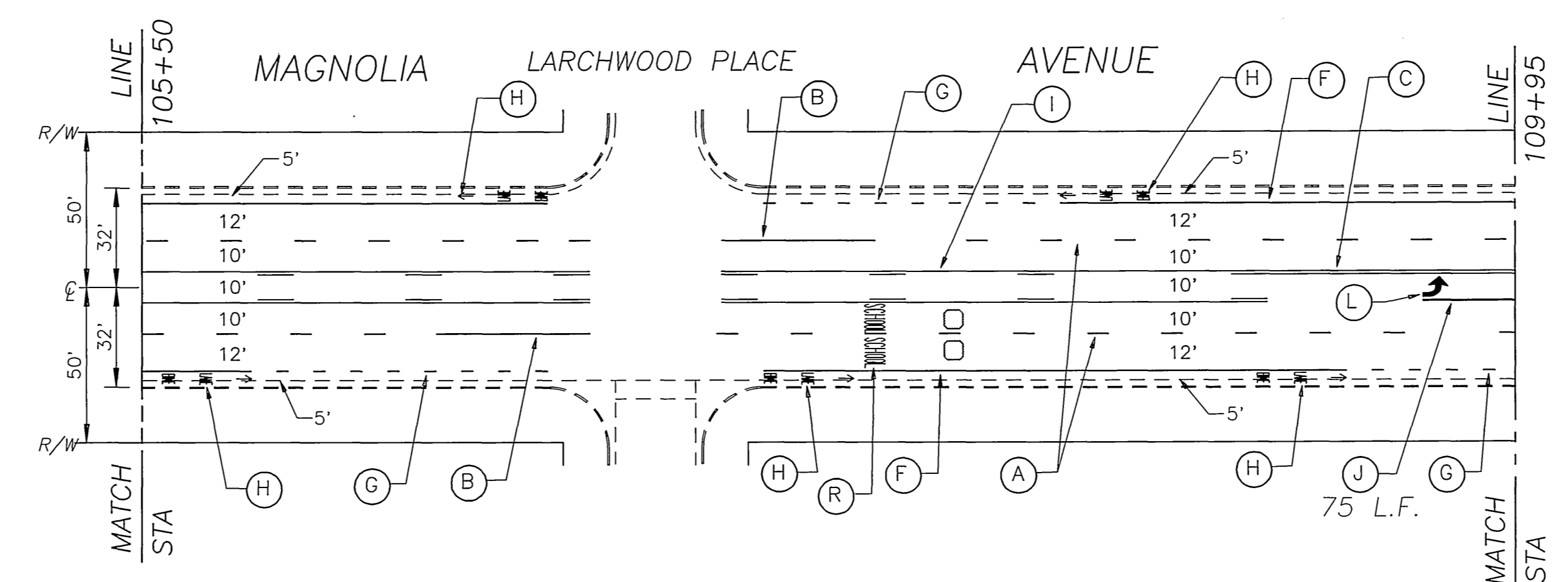
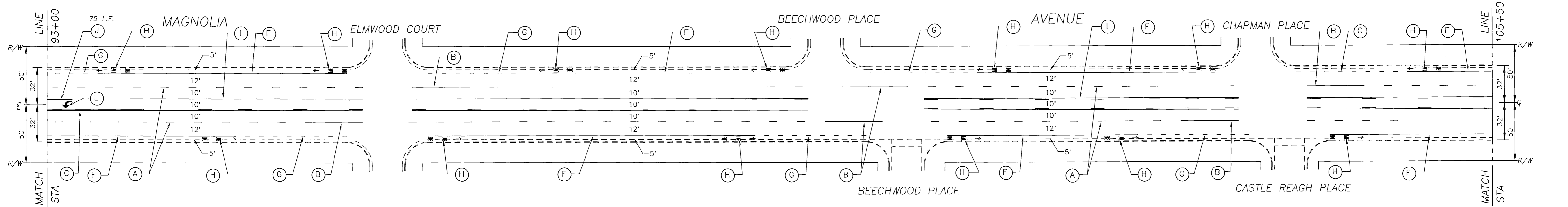
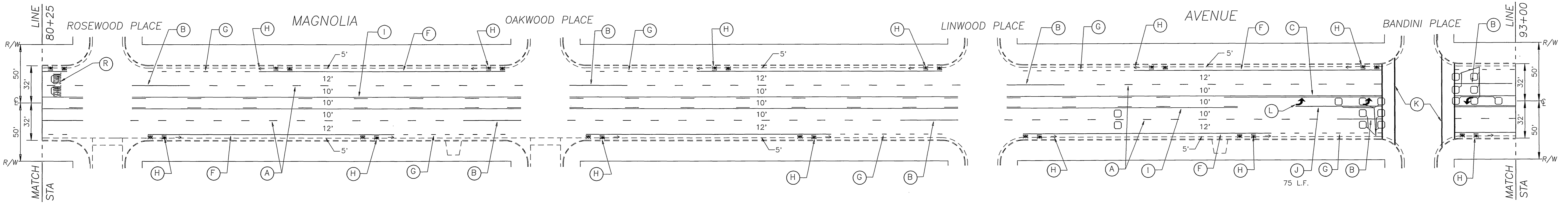
CITY OF RIVERSIDE DEPARTMENT OF PUBLIC WORKS TRAFFIC ENGINEERING DIVISION		STRIPING & MARKING PLAN	SCALE: 1" = 40'
MAGNOLIA AV. ARLINGTON TO 14TH		XL-332 (R-3312)	
REHAB ART. STREETS 92/93		SHEET 1 OF 4	
DESIGN: Bob G. DRAWN: Bob G. CHECKED: Bob G. REVISIONS:	APPROVED BY: <i>[Signature]</i> DATE: 9/2/94		



**STRIPING & MARKING LEGEND**

- |                                                                                                            |                                                                                                                                         |
|------------------------------------------------------------------------------------------------------------|-----------------------------------------------------------------------------------------------------------------------------------------|
| (A) 4" SKIP WHITE STRIPE (7' STRIPE, 17" GAP) WITH TYPE G ONE-WAY CLEAR REFLECTIVE MARKERS AT 24' SPACING. | (I) YELLOW TWO-WAY TURN LANE WITH TYPE D TWO-WAY YELLOW REFLECTIVE MARKERS AT 24' SPACING (OUTSIDE) & 48' SPACING ALTERNATELY (INSIDE). |
| (B) 4" SOLID WHITE STRIPE (50 L.F.) WITH TYPE G ONE-WAY CLEAR REFLECTIVE MARKERS AT 24' SPACING.           | (J) 8" SOLID WHITE STRIPE WITH TYPE G ONE-WAY CLEAR REFLECTIVE MARKERS AT 24' SPACING.                                                  |
| (C) 4" SOLID DOUBLE YELLOW STRIPE WITH TYPE D TWO-WAY YELLOW REFLECTIVE MARKERS AT 24' SPACING.            | (K) 12" SOLID WHITE MARKING                                                                                                             |
| (D) 24" SOLID WHITE MARKING                                                                                | (L) SOLID WHITE ARROW                                                                                                                   |
| (E) SOLID WHITE "R X R" MARKING                                                                            | (P) 12" SOLID YELLOW MARKING                                                                                                            |
| (F) 6" SOLID WHITE STRIPE                                                                                  | (Q) 24" SOLID YELLOW MARKING                                                                                                            |
| (G) 6" SKIP WHITE STRIPE (4' STRIPE, 8" GAP) 96 L.F.                                                       | (R) SOLID YELLOW "SCHOOL" MARKING                                                                                                       |
| (H) SOLID WHITE "BIKE, LANE, →" MARKING                                                                    |                                                                                                                                         |

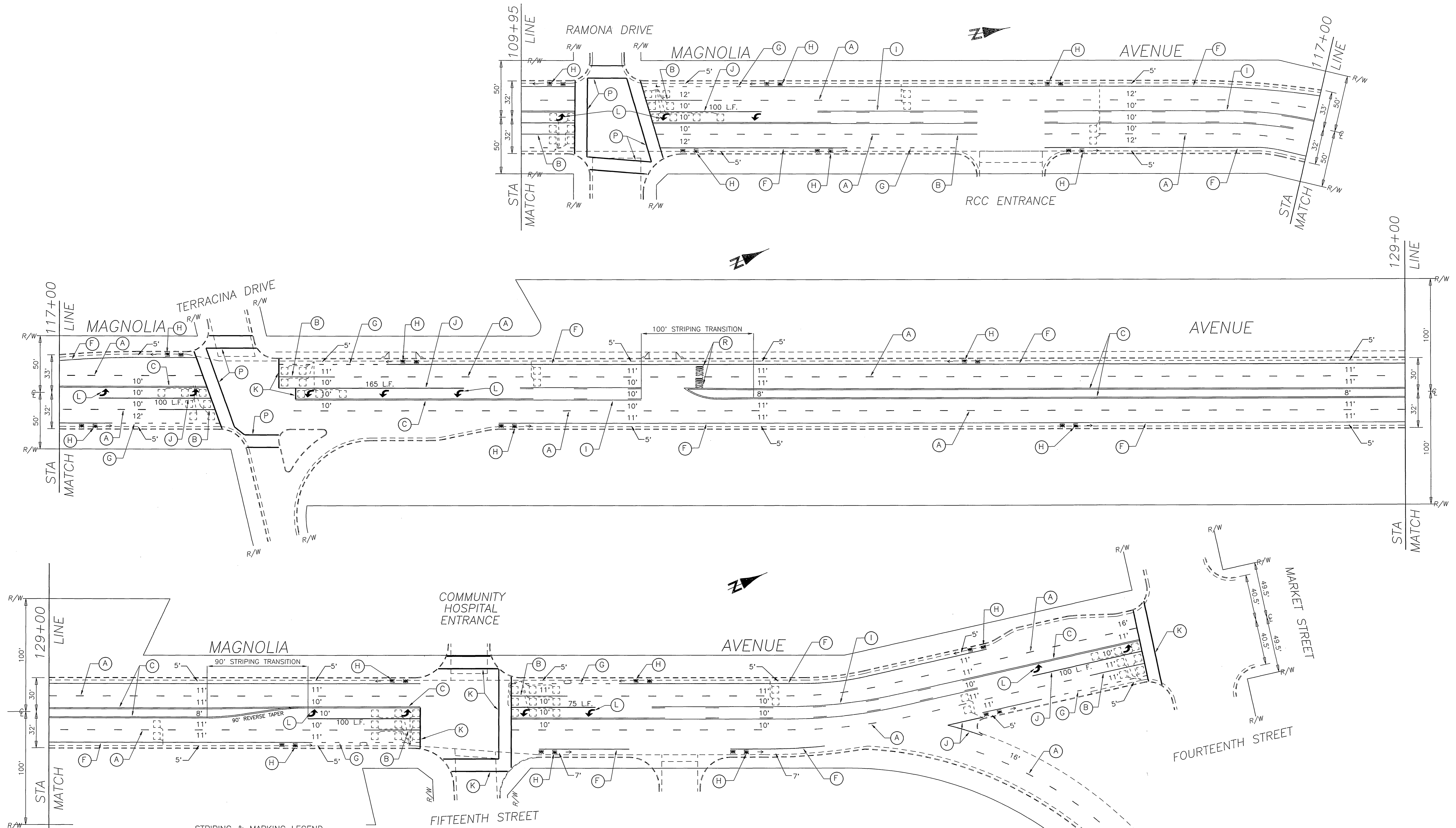
CITY OF RIVERSIDE DEPARTMENT OF PUBLIC WORKS TRAFFIC ENGINEERING DIVISION		STRIPING & MARKING PLAN	SCALE: 1" = 40'
DESIGN: Bob C. DRAWN: Bob C. CHECKED: Bob C. REVISIONS:		MAGNOLIA AV. ARLINGTON TO 14TH REHAB ART. STREETS 92/93	XL-332 (R-3312)
APPROVED BY: <i>[Signature]</i> CITY TRAFFIC ENGINEER		DATE: 7/1/94	SHEET 2 OF 4



STRIPING & MARKING LEGEND

- (A) 4" SKIP WHITE STRIPE (7" STRIPE, 17" GAP) WITH TYPE G ONE-WAY CLEAR REFLECTIVE MARKERS AT 24' SPACING.
- (B) 4" SOLID WHITE STRIPE (50 L.F.) WITH TYPE G ONE-WAY CLEAR REFLECTIVE MARKERS AT 24' SPACING.
- (C) 4" SOLID DOUBLE YELLOW STRIPE WITH TYPE D TWO-WAY YELLOW REFLECTIVE MARKERS AT 24' SPACING.
- (D) 24" SOLID WHITE MARKING
- (E) SOLID WHITE "R X R" MARKING
- (F) 6" SOLID WHITE STRIPE
- (G) 6" SKIP WHITE STRIPE (4" STRIPE, 8" GAP) 96 L.F.
- (H) SOLID WHITE "BIKE, LANE, →" MARKING
- (I) YELLOW TWO-WAY TURN LANE WITH TYPE D TWO-WAY YELLOW REFLECTIVE MARKERS AT 24' SPACING(OUTSIDE) & 48' SPACING ALTERNATELY(INSIDE).
- (J) 8" SOLID WHITE STRIPE WITH TYPE G ONE-WAY CLEAR REFLECTIVE MARKERS AT 24' SPACING.
- (K) 12" SOLID WHITE MARKING
- (L) SOLID WHITE ARROW
- (P) 12" SOLID YELLOW MARKING
- (R) SOLID YELLOW "SCHOOL" MARKING

CITY OF RIVERSIDE DEPARTMENT OF PUBLIC WORKS TRAFFIC ENGINEERING DIVISION		STRIPING & MARKING PLAN	SCALE : 1" = 40'
MAGNOLIA AV. ARLINGTON TO 14TH REHAB ART. STREETS 92/93		XL-332 (R-3312)	SHEET 3 OF 4
DESIGN : Bob G.	APPROVED BY : <i>[Signature]</i>		
DRAWN : Bob G.	CITY TRAFFIC ENGINEER		
CHECKED : Bob G.	DATE : 2/7/94		
REVISIONS :			



- STRIPING & MARKING LEGEND**
- (A) 4" SKIP WHITE STRIPE (7' STRIPE, 17' GAP) WITH TYPE G ONE-WAY CLEAR REFLECTIVE MARKERS AT 24' SPACING.
  - (B) 4" SOLID WHITE STRIPE (50 L.F.) WITH TYPE G ONE-WAY CLEAR REFLECTIVE MARKERS AT 24' SPACING.
  - (C) 4" SOLID DOUBLE YELLOW STRIPE WITH TYPE D TWO-WAY YELLOW REFLECTIVE MARKERS AT 24' SPACING.
  - (D) 24" SOLID WHITE MARKING
  - (E) SOLID WHITE "R X R" MARKING
  - (F) 6" SOLID WHITE STRIPE
  - (G) 6" SKIP WHITE STRIPE (4' STRIPE, 8' GAP) 96 L.F.
  - (H) SOLID WHITE "BIKE, LANE, →" MARKING
  - (I) YELLOW TWO-WAY TURN LANE WITH TYPE D TWO-WAY YELLOW REFLECTIVE MARKERS AT 24' SPACING (OUTSIDE) & 48' SPACING ALTERNATELY (INSIDE).
  - (J) 8" SOLID WHITE STRIPE WITH TYPE G ONE-WAY CLEAR REFLECTIVE MARKERS AT 24' SPACING.
  - (K) 12" SOLID WHITE MARKING
  - (L) SOLID WHITE ARROW
  - (P) 12" SOLID YELLOW MARKING
  - (R) SOLID YELLOW "SCHOOL" MARKING

CITY OF RIVERSIDE DEPARTMENT OF PUBLIC WORKS TRAFFIC ENGINEERING DIVISION		<b>STRIPING &amp; MARKING PLAN</b>  MAGNOLIA AV. ARLINGTON TO 14TH REHAB ART. STREETS 92/93	SCALE: 1" = 40'  XL-332 (R-3312)  SHEET 4 OF 4
DESIGN: Bob G. DRAWN: Bob G. CHECKED: Bob G. REVISIONS:	APPROVED BY:  CITY TRAFFIC ENGINEER      DATE: 7/2/99		