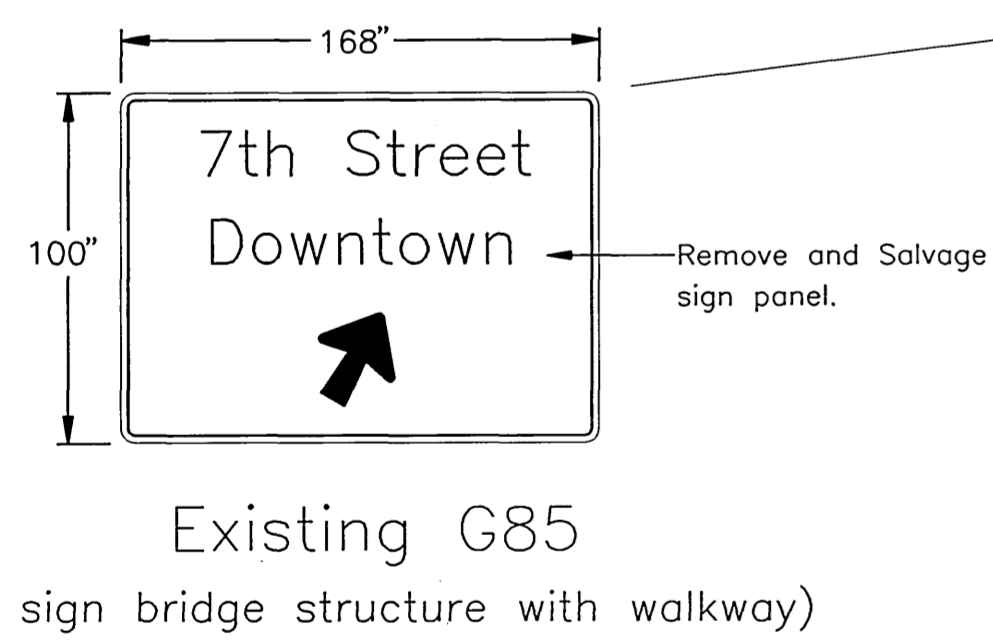


NOTE: Razor wire exists on pole shaft.

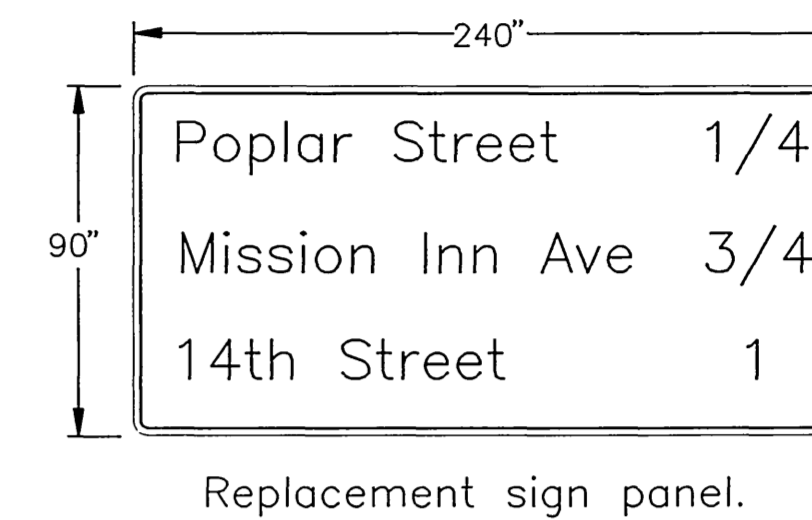
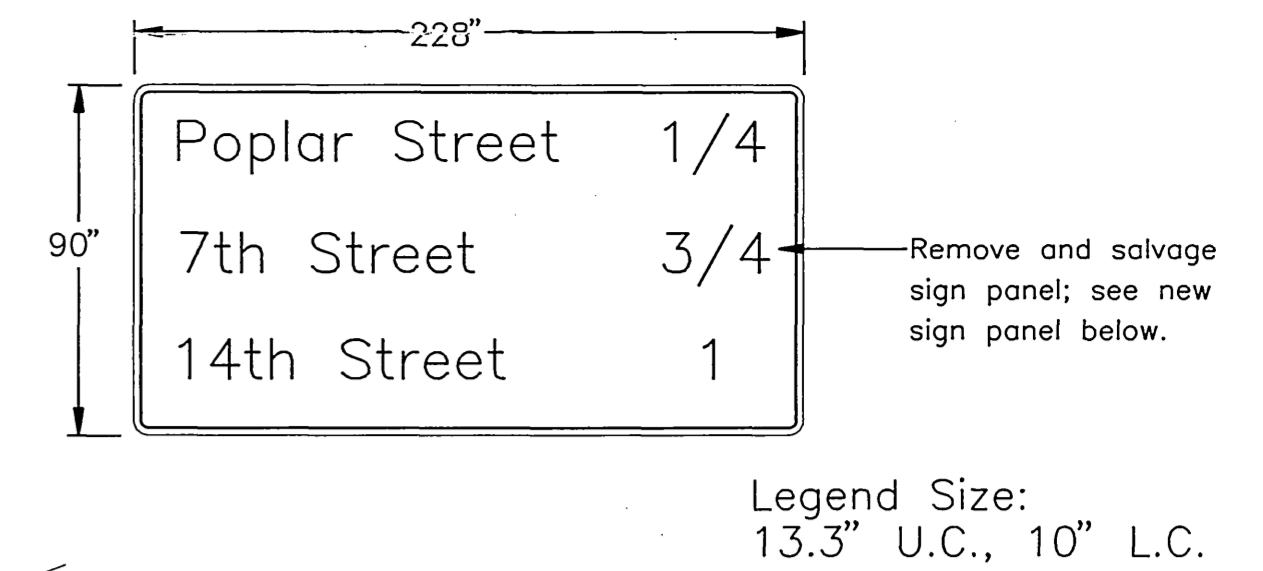
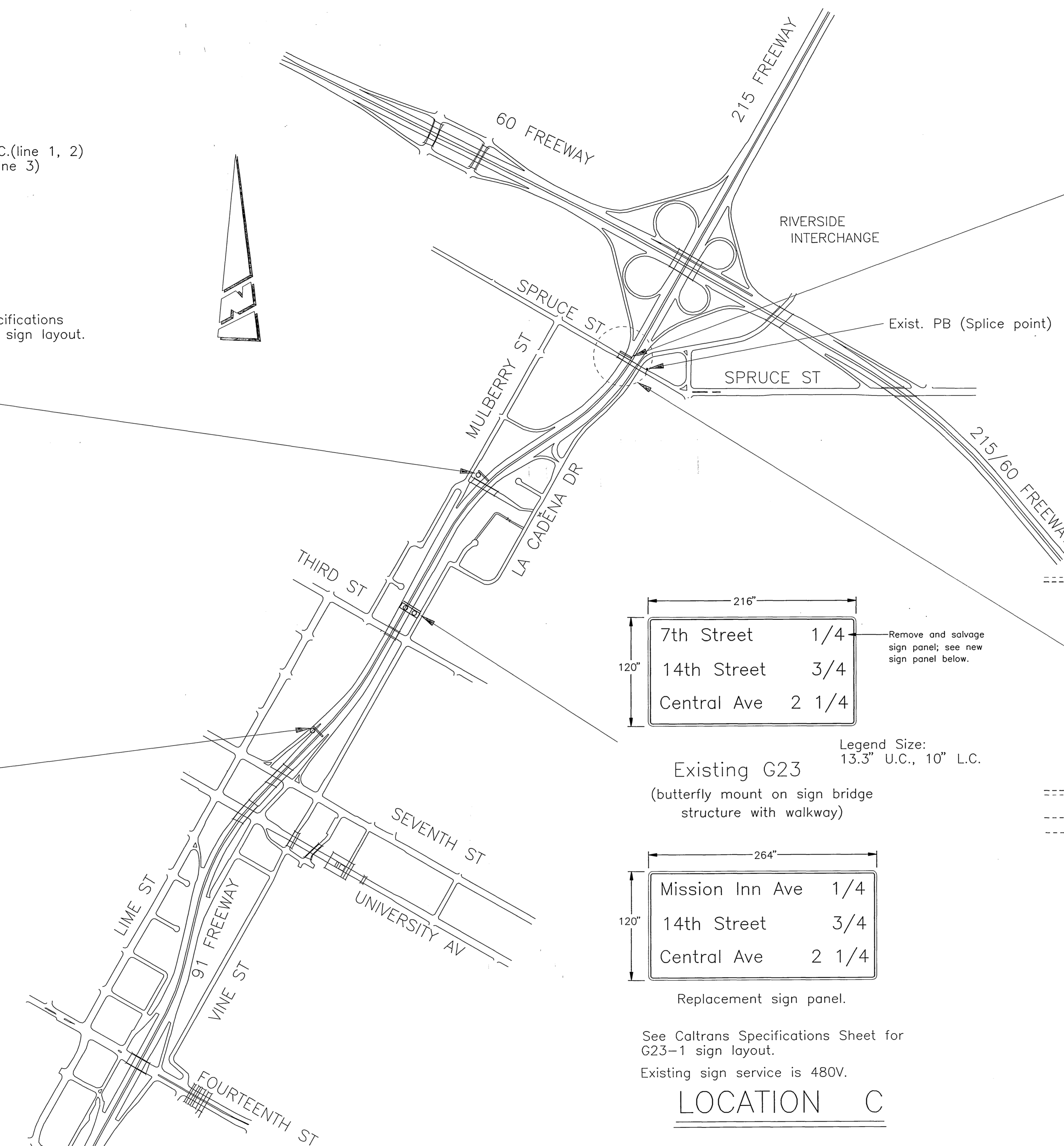
LOCATION B



New Legend Size:
16" U.C., 12" L.C.
30 Deg., 2 Line Arrow

NOTE: See Caltrans Specifications Sheet for G85-5 sign layout.

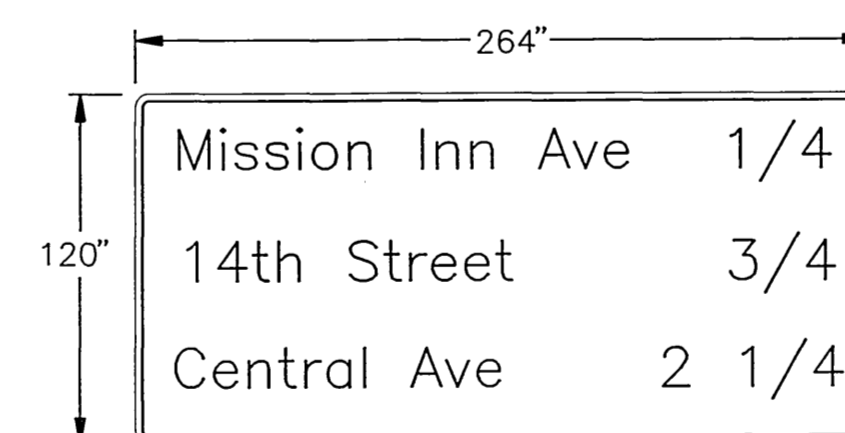
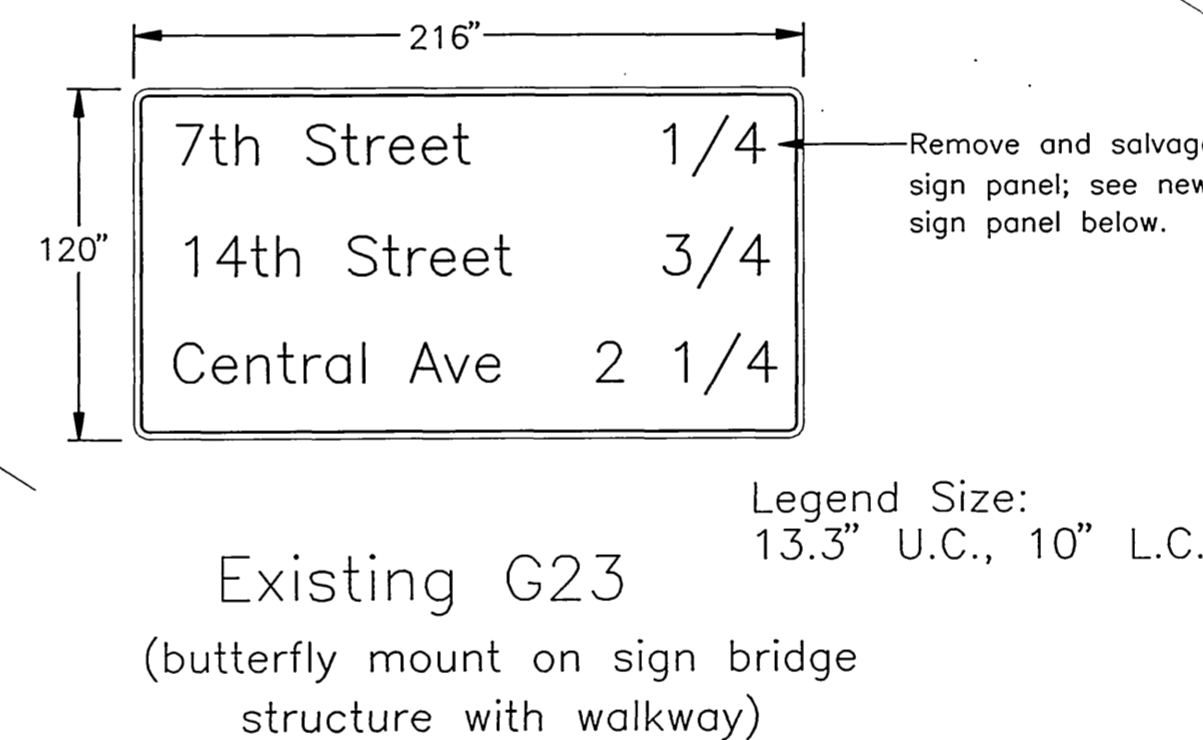
LOCATION D



See Caltrans Specifications Sheet for G23-1 sign layout.

NOTE: Razor wire exists around the perimeter of the sign.

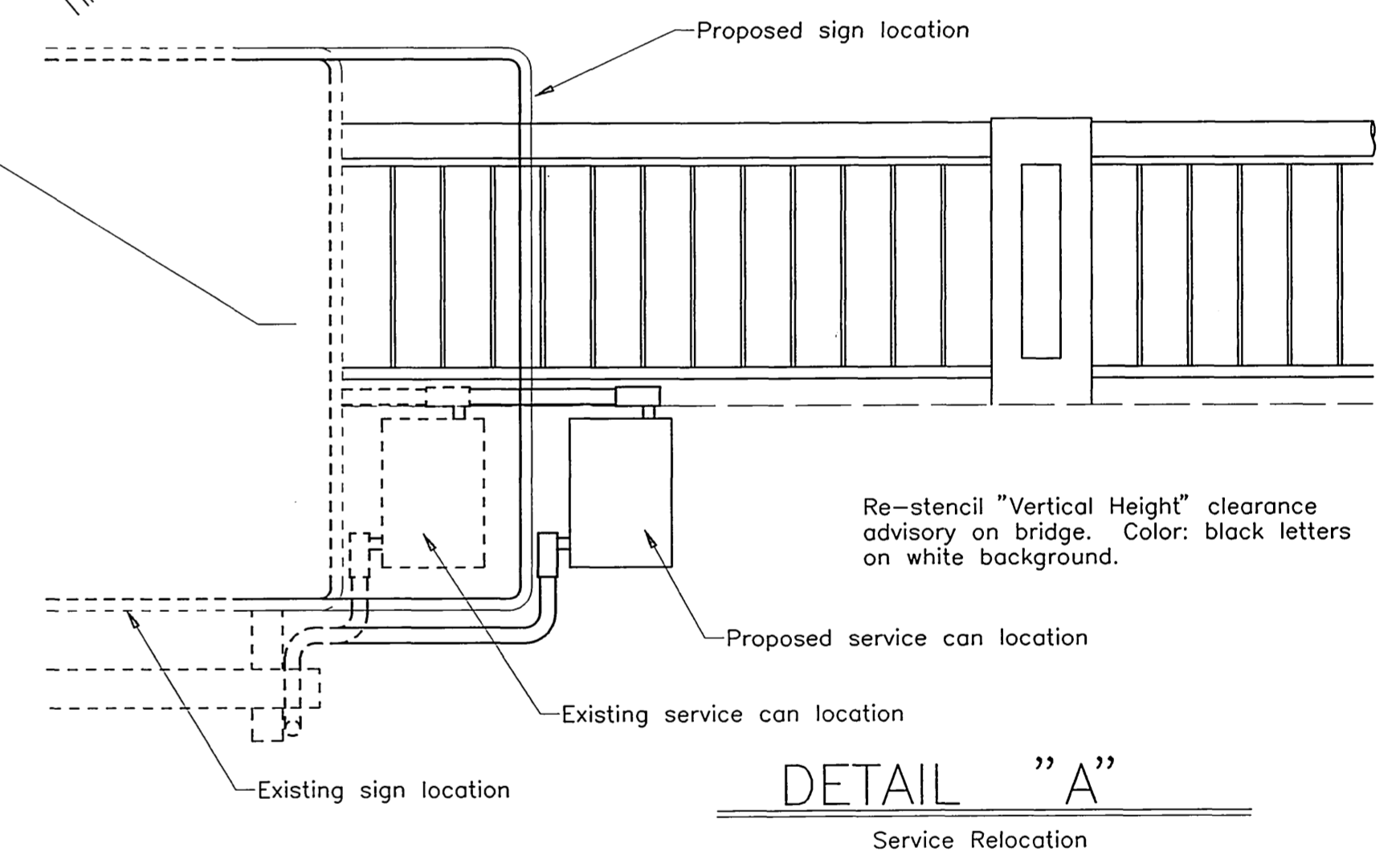
LOCATION A



See Caltrans Specifications Sheet for G23-1 sign layout.

Existing sign service is 480V.

LOCATION C



Spruce Street Bridge Sign Panel Electrical Circuit Modification Location "A"

The existing 3R NEMA sign control enclosure shall be relocated westerly approximately 1 1/2 feet to allow access through the door. Refer to Caltrans Standard Plan ES-32A for information.

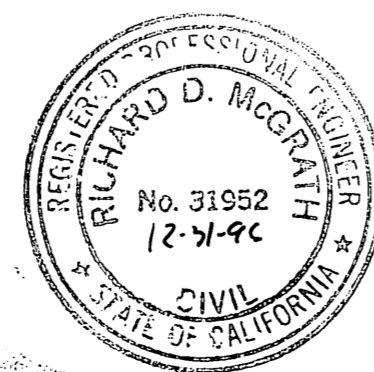
Steel 1 1/2 conduit and the appropriate couplings shall be provided and installed as extensions to the existing conduit for the relocation of said enclosure.

New conductors, 2-#10's, shall be installed in the sign illumination circuit from the fixture to the enclosure and from the enclosure to the existing No. 5 pullbox easterly of the bridge, approximately 190 feet; splicing shall be as directed by the Caltrans permit inspector.

Securing the 3R NEMA sign control enclosure shall be as directed by said inspector.

Existing sign service is 480V.

ENCROACHMENT PERMIT NO: 08-95-N-MC-0533



ENGINEER IN RESPONSIBLE CHARGE
Richard D. McGrath
RICHARD D. McGRATH
R.C.E. No. 31952 expires 12-31-96
DATE 2-21-96

MARK	REVISIONS	APPR.	DATE

DESIGNED BY *JW* DRAWN BY *MAC* CHECKED BY *JW*

CITY OF RIVERSIDE, CALIFORNIA DEPARTMENT OF PUBLIC WORKS			
APPROVED BY	BY	DATE	APPROVED BY
PRINCIPAL ENGINEER	<i>[Signature]</i>	2/22/96	<i>[Signature]</i>
P.W. INSPECTION	<i>[Signature]</i>	2/22/96	DIRECTOR OF PUBLIC WORKS
TRAFFIC DIVISION			
CHIEF P.W. ENGR.			
PUBLIC UTILITIES			

SR-91 FREEWAY
GUIDE SIGN
REPLACEMENT @
VARIOUS LOCATIONS

ACCT. NO.
XL-371
SHEET 1 OF 1
FILE NAME: XL371.DWG