
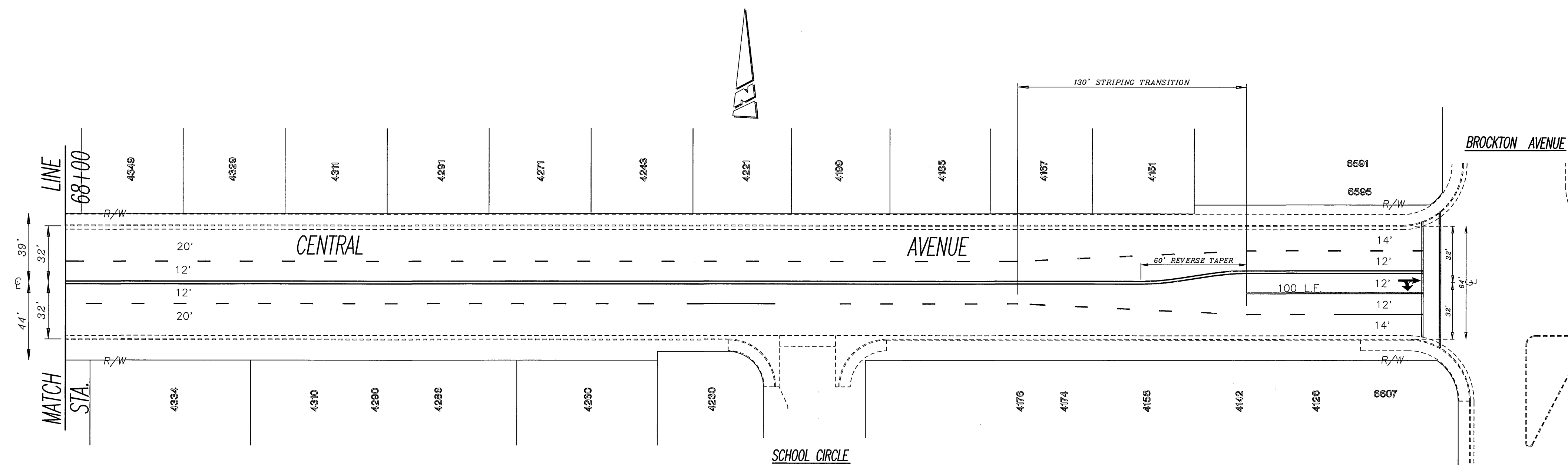
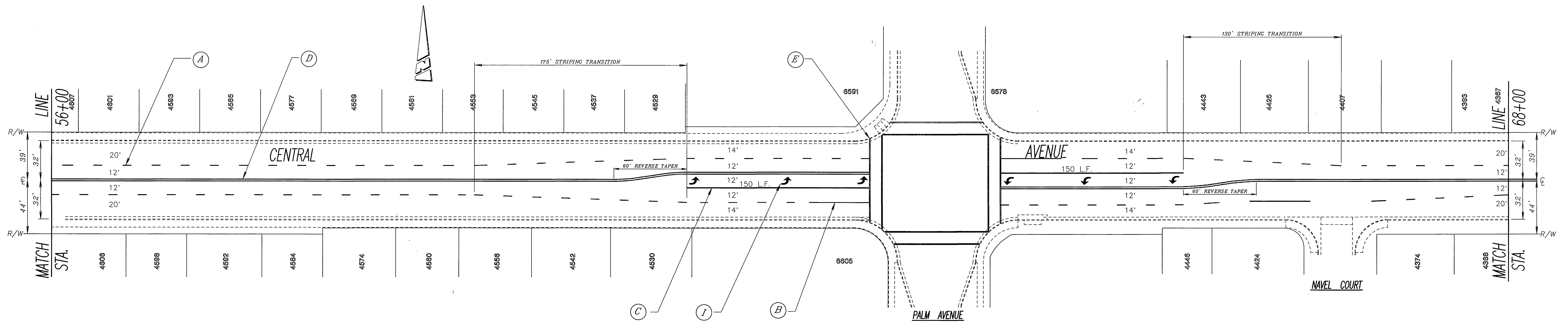


*NOTE: REMOVE ANY CONFLICTING STRIPING AND PAVEMENT MARKINGS

PAVEMENT DELINEATION LEGEND (BY CITY FORCES)

- (A) PAINT 4" SKIP WHITE STRIPE (7' STRIPE, 17" CAP)
- (B) PAINT 4" SOLID WHITE STRIPE (50')
- (D) PAINT 4" SOLID DOUBLE YELLOW STRIPE
- (F) PAINT 12" SOLID YELLOW MARKING
- (C) PAINT 24" SOLID YELLOW MARKING
- (H) PAINT YELLOW "SLOW, SCHOOL, XING" MARKING

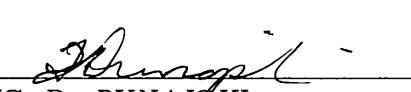
 ENGINEER IN RESPONSIBLE CHARGE FRANCIS R. DUNAJSKI T.R. No. 1569 expires 6/30/99 DATE 8/7/97		CITY OF RIVERSIDE, CALIFORNIA DEPARTMENT OF PUBLIC WORKS APPROVED BY _____ BY DATE _____ PRINCIPAL ENGINEER P.W. INSPECTION TRAFFIC DIVISION CHIEF P.W. ENGR. PUBLIC UTILITIES	REHAB. OF ARTERIAL STREETS 96-97 CENTRAL AVENUE CARLO DRIVE TO BROCKTON AVENUE SCALE: 1" = 40' ACCT. NO. 430-541500-440301-30038 XL-400-1 (R-3450) SHEET 1 OF 2 FILE NAME: XL400-1.DWG
---	--	---	---



PAVEMENT DELINEATION LEGEND (BY CITY FORCES)

- (A) PAINT 4" SKIP WHITE STRIPE (7' STRIPE, 17" GAP)
- (B) PAINT 4" SOLID WHITE STRIPE (50')
- (C) PAINT 8" SOLID WHITE STRIPE
- (D) PAINT 4" SOLID DOUBLE YELLOW STRIPE
- (E) PAINT 12" SOLID WHITE MARKING
- (F) PAINT 12" SOLID YELLOW MARKING
- (G) PAINT 24" SOLID YELLOW MARKING
- (J) PAINT SOLID WHITE ARROW MARKING

*NOTE: REMOVE ANY CONFLICTING STRIPING AND PAVEMENT MARKINGS

ENGINEER IN RESPONSIBLE CHARGE

 FRANCIS R. DUNAJSKI
 T.R. No. 1569 expires 6/30/99
 DATE 8/7/97

CITY OF RIVERSIDE, CALIFORNIA DEPARTMENT OF PUBLIC WORKS			
APPROVED BY	BY	DATE	APPROVED BY
PRINCIPAL ENGINEER			DIRECTOR OF PUBLIC WORKS
P.W. INSPECTION			
TRAFFIC DIVISION		8/17/97	
CHIEF P.W. ENGR.			
PUBLIC UTILITIES			
MARK	REVISIONS	APPR. DATE	DATE
DESIGNED BY	D.H.	DRAWN BY	D.H.
CHECKED BY			

REHAB. OF ARTERIAL STREETS 96-97	ACCT. NO. 430-541500-440301-30038
CENTRAL AVENUE CARLO DRIVE TO BROCKTON AVENUE	XL-400-2 (R-3450) SHEET 2 OF 2
SCALE: 1" = 40'	FILE NAME: XL400-2.DWG