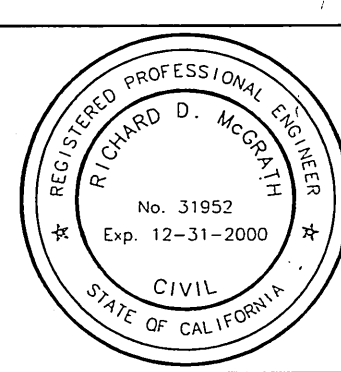


PAVEMENT DELINEATION
 FOR REFERENCE ONLY

- INDICATES STRIPING AND PAVEMENT MARKINGS TO BE INSTALLED.
- INDICATES STRIPING AND PAVEMENT MARKINGS TO REMAIN UNLESS OTHERWISE INDICATED.
- INDICATES STRIPING AND PAVEMENT MARKINGS TO BE REMOVED.
- INSTALL SIGN PER C/R STANDARD DRAWING NUMBER 666.

NOTE: ALL PERMANENT PAVEMENT DELINEATION AND TRAFFIC SIGNING SHALL BE BY CITY FORCES.

ENGINEER IN RESPONSIBLE CHARGE
 RICHARD D. McGRATH
 R.C.E. NO. 31952 EXPIRES 12-31-2000
 DATE 9/22/97



| | | | |
|-------------|-----------|------------|------|
| MARK | REVISIONS | APPR. | DATE |
| | | | |
| DESIGNED BY | DRAWN BY | CHECKED BY | |
| | BEM | | |

CITY OF RIVERSIDE, CALIFORNIA
 DEPARTMENT OF PUBLIC WORKS

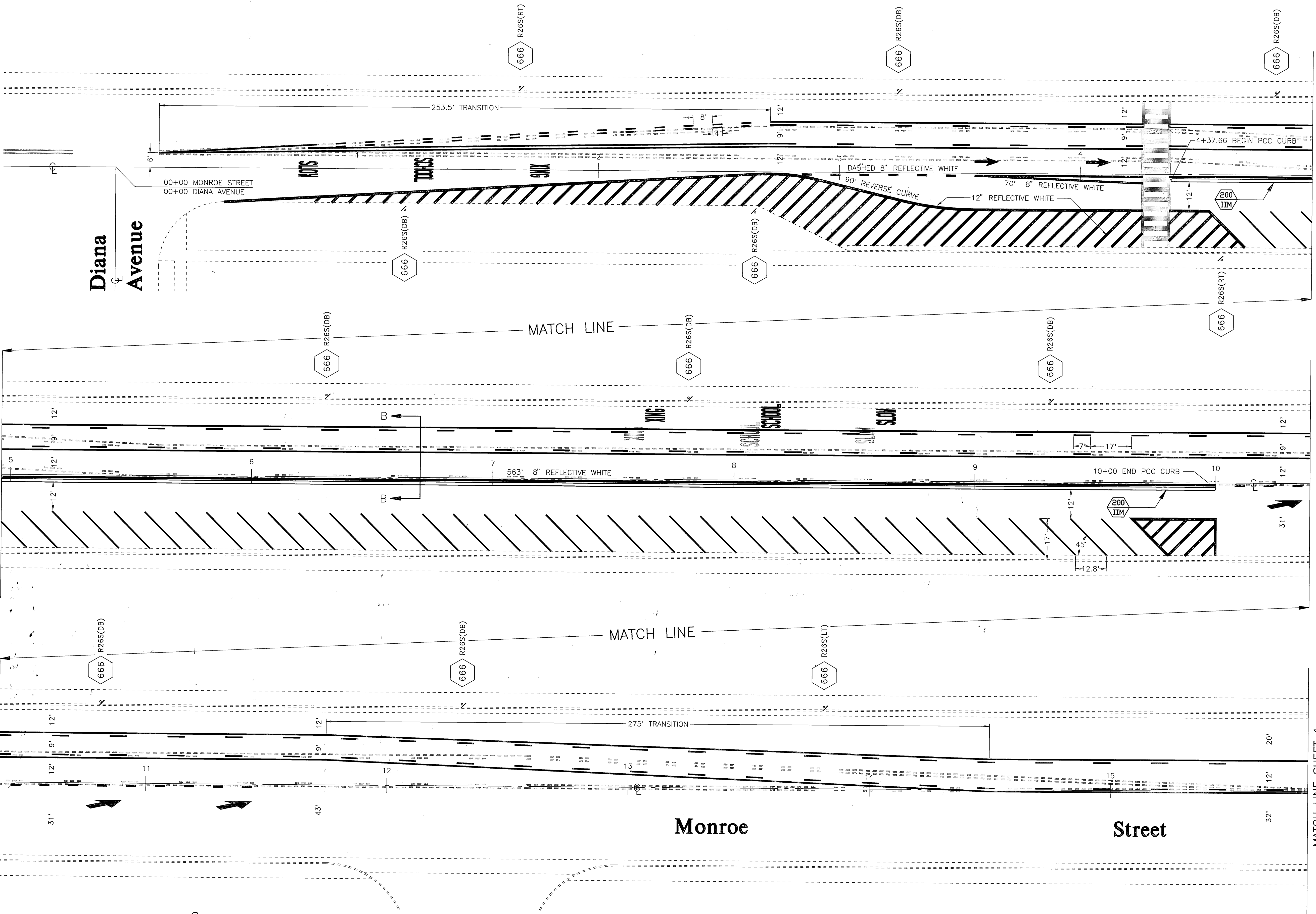
| | | | |
|--------------------|----|------|-------------|
| APPROVED BY | BY | DATE | APPROVED BY |
| | | | |
| PRINCIPAL ENGINEER | | | |
| P.W. INSPECTOR | | | |
| TRAFFIC DIVISION | | | |
| CHEF P.W. ENGR. | | | |
| PUBLIC UTILITIES | | | |

DATE 9/22/97

PAVEMENT DELINEATION & SIGNING
 MONROE STREET
 500' N/O & 2600' S/O
 MAGNOLIA AVENUE
 SCALE: 1" = 20'

ACCT. NO. 0432-541500-440302-30288
XL-410
 SHEET 1 OF 2
 FILE NAME: XL410.DWG

INDEXED 9-29-97 GH

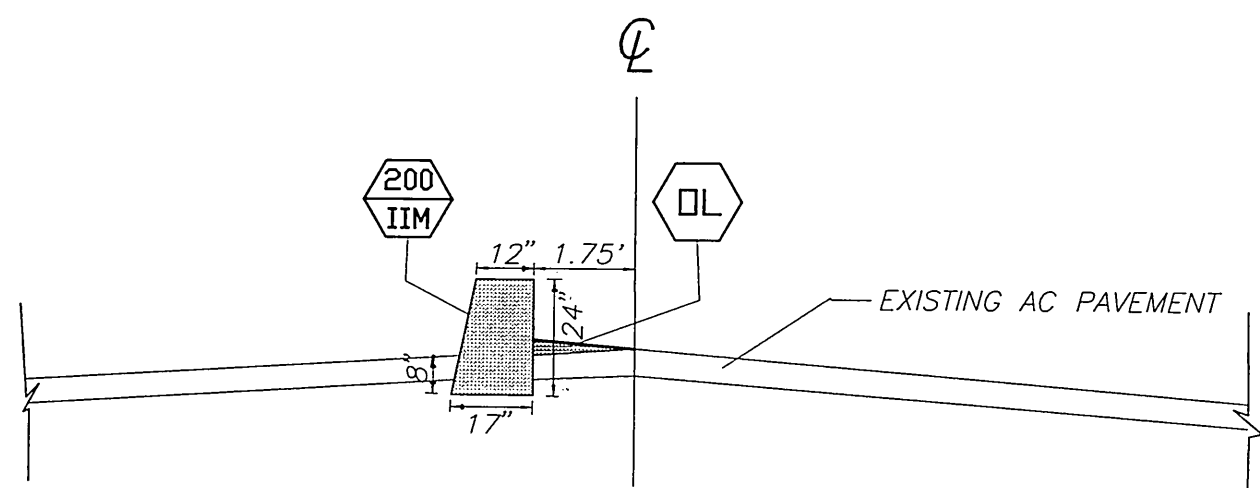
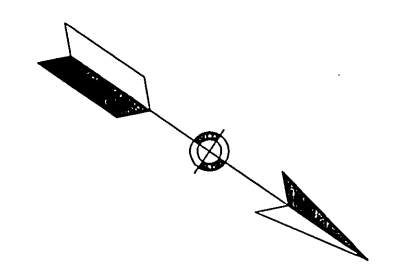


PAVEMENT DELINEATION

- FOR REFERENCE ONLY**
- INDICATES STRIPING AND PAVEMENT MARKINGS TO BE INSTALLED.
 - INDICATES STRIPING AND PAVEMENT MARKINGS TO REMAIN UNLESS OTHERWISE INDICATED.
 - - - - - INDICATES STRIPING AND PAVEMENT MARKINGS TO BE REMOVED.
 - 666 INSTALL SIGN PER C/R STANDARD DRAWING NUMBER 666.
- NOTE:** ALL PERMANENT PAVEMENT DELINEATION AND TRAFFIC SIGNING SHALL BE BY CITY FORCES.

CONSTRUCTION NOTES

- REMOVAL OF ASPHALT PAVEMENT, CONSTRUCTION OF PCC CURB AND OVERLAY SHOWN ON THIS PLAN ARE PART OF THIS CONTRACT.
- 200 IIM CONSTRUCT 562 L.F. OF PCC CURB PER PLAN AND STD. DWG.
- DL OVERLAY EXISTING PAVEMENT BY APPROXIMATELY 0.5" FOR DRAINAGE.



SECTION B-B
PROPOSED CONCRETE CURB
AT MONROE STREET

ENGINEER IN RESPONSIBLE CHARGE

Richard D. McGrath

RICHARD D. McGRATH
R.C.E. NO. 31952 EXPIRES 12-31-2000
DATE 9/22/97

| MARK | REVISIONS | APPR. | DATE |
|------|-----------|-------|------|
| | | | |
| | | | |

DESIGNED BY: _____ DRAWN BY: *B.M.M.* CHECKED BY: _____

CITY OF RIVERSIDE, CALIFORNIA
DEPARTMENT OF PUBLIC WORKS

APPROVED BY: _____ BY: *Jerry Bell* DATE: 9/22/97
PRINCIPAL ENGINEER

P.W. INSPECTION: _____ DATE: 9/11/97
TRAFFIC DIVISION

CHIEF P.W. ENGR. *RHC* DATE: 9/22/97
PUBLIC UTILITIES

PAVEMENT DELINEATION & SIGNING

MONROE STREET
500' N/O & 2600' S/O
MAGNOLIA AVENUE

ACCT. NO. 0432-541500-440302-30288

XL-410
SHEET 2 OF 2

SCALE: 1" = 20'

FILE NAME: XL410.DWG

INDEXED 9-29-97 4H