

SIGNING AND STRIPING GENERAL NOTES

1. ALL WORK, MATERIALS AND EQUIPMENT FOR TRAFFIC SIGNING AND STRIPING SHALL CONFORM TO THESE PLANS, THE CALTRANS TRAFFIC MANUAL, THE STANDARD SPECIFICATIONS FOR THE CITY OF RIVERSIDE, AND THE STANDARD SPECIFICATIONS OF THE STATE OF CALIFORNIA (DATED JULY 2002).
2. PAVEMENT MARKINGS SHALL CONFORM TO THE CITY OF RIVERSIDE STANDARD STENCILS.
3. ALL STRIPING AND PAVEMENT MARKINGS SHALL BE ALKYD THERMOPLASTIC PER SPECIAL PROVISIONS.
4. TRAFFIC SIGN DIMENSIONS, COLOR AND LETTERING SHALL CONFORM TO THE LATEST CALTRANS SIGN SPECIFICATIONS SHEETS. SIGN CODES SHOWN HEREON ARE TO CONFORM TO CALTRANS SPECIFICATION SHEET CODES. TRAFFIC SIGN SIZE SHALL BE STANDARD UNLESS OTHERWISE SHOWN ON THE PLANS.
5. ALL SIGNS SHALL BE MOUNTED ON A GALVANIZED STEEL POST, PER CITY OF RIVERSIDE STANDARD DRAWING NO. 666 UNLESS OTHERWISE SHOWN.
6. IT SHALL BE THE RESPONSIBILITY OF THE CONTRACTOR TO MAINTAIN BARRICADES, DELINEATORS OR OTHER TRAFFIC CONTROL AT ALL TIMES.
7. CONTROL POINTS OR "CAT-TRACKING" TO BE APPROVED BY THE ENGINEER TWO (2) WORKING DAYS PRIOR TO PAVEMENT STRIPING APPLICATION.
8. CROSSWALKS SHALL HAVE 3.0m (10') CLEARANCE BETWEEN 300mm (12") WIDE STRIPES PER CITY OF RIVERSIDE STANDARD DRAWING NO. 304.
9. ALL CONFLICTING STRIPING, MARKINGS TO BE REMOVED BY METHOD DESCRIBED IN SECTION 310, "PAINTING," OF THE SPECIAL PROVISIONS.

CONSTRUCTION NOTES

- P1** INSTALL STRIPING AND RAISED PAVEMENT MARKING PER CALTRANS DETAIL NUMBER.
- P2** INSTALL PAVEMENT OR CURB MARKING
- P3** REMOVE EXIST. CONFLICTING STRIPING AND MARKING
- P4** REPAINT PAVEMENT MARKINGS
- S1** INSTALL SIGN, MARKER OR CHANNELIZER PER CALTRANS CODE NO.
- S2** REMOVE SIGN, MARKER OR CHANNELIZER
- S3** RESET/RELOCATE EXISTING SIGN TO NEW POST
- SE** SIGN OR MARKER TO REMAIN

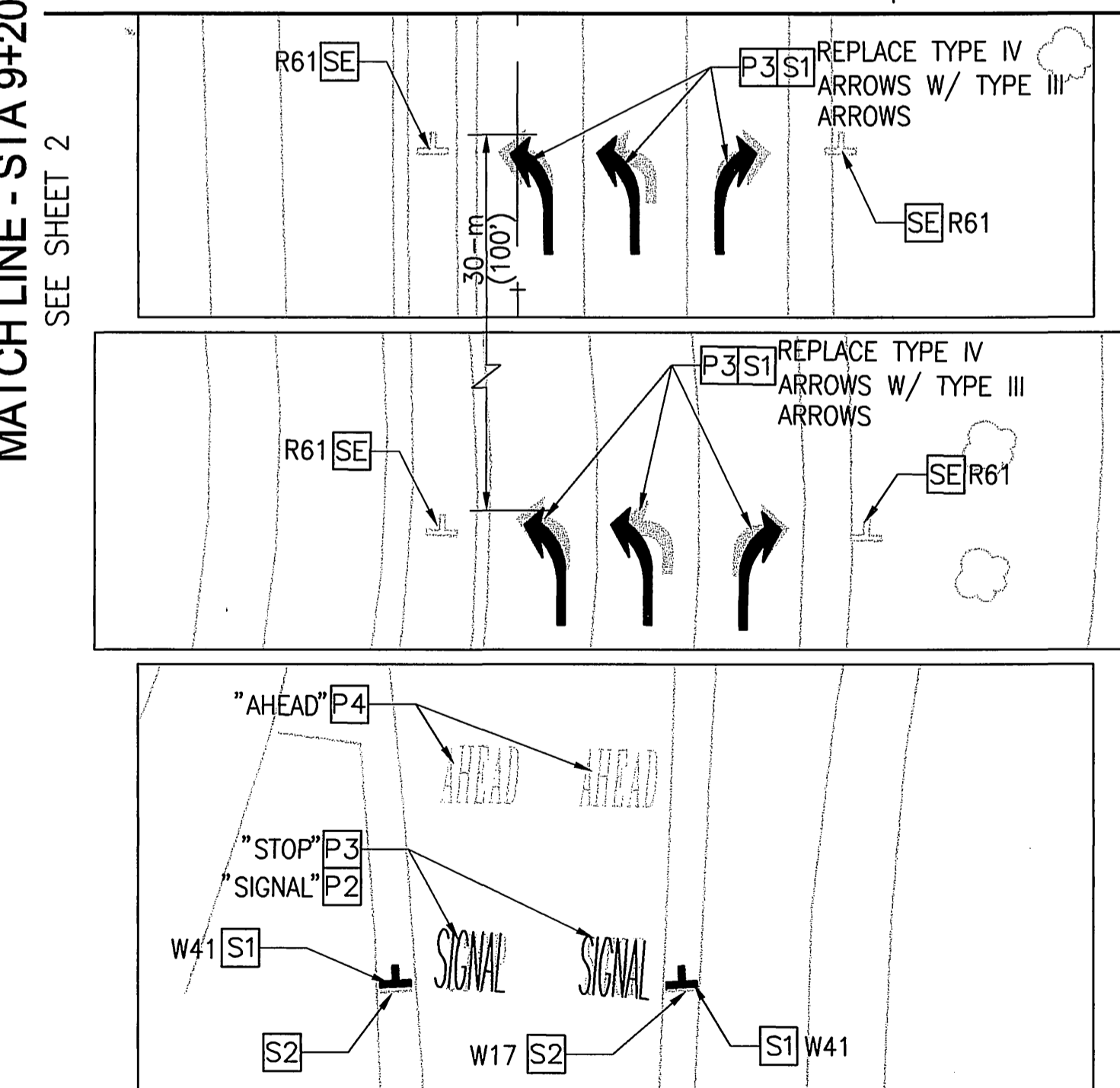
LEGEND

- EXISTING ONE POST SIGN
- EXISTING TWO POST SIGN
- EXISTING STREET NAME SIGN (SNS)
- EXISTING SIGN ON LIGHT POLE
- ONE POST SIGN
- TWO POST SIGN
- SIGN ON STREET LIGHT OR TRAFFIC SIGNAL POLE. STRAP AND SADDLE BRACKET METHOD (S & SBM)
- STREET NAME SIGN (SNS)
- EXISTING PAVEMENT MARKING-ARROW
- NEW PAVEMENT MARKING-TYPE IV (LT OR RT) ARROW
- NEW PAVEMENT MARKING-TYPE III (LT OR RT) ARROW
- CHANGE IN STRIPING DETAIL

MATCH LINE - STA 8+20
SEE BELOW LEFT

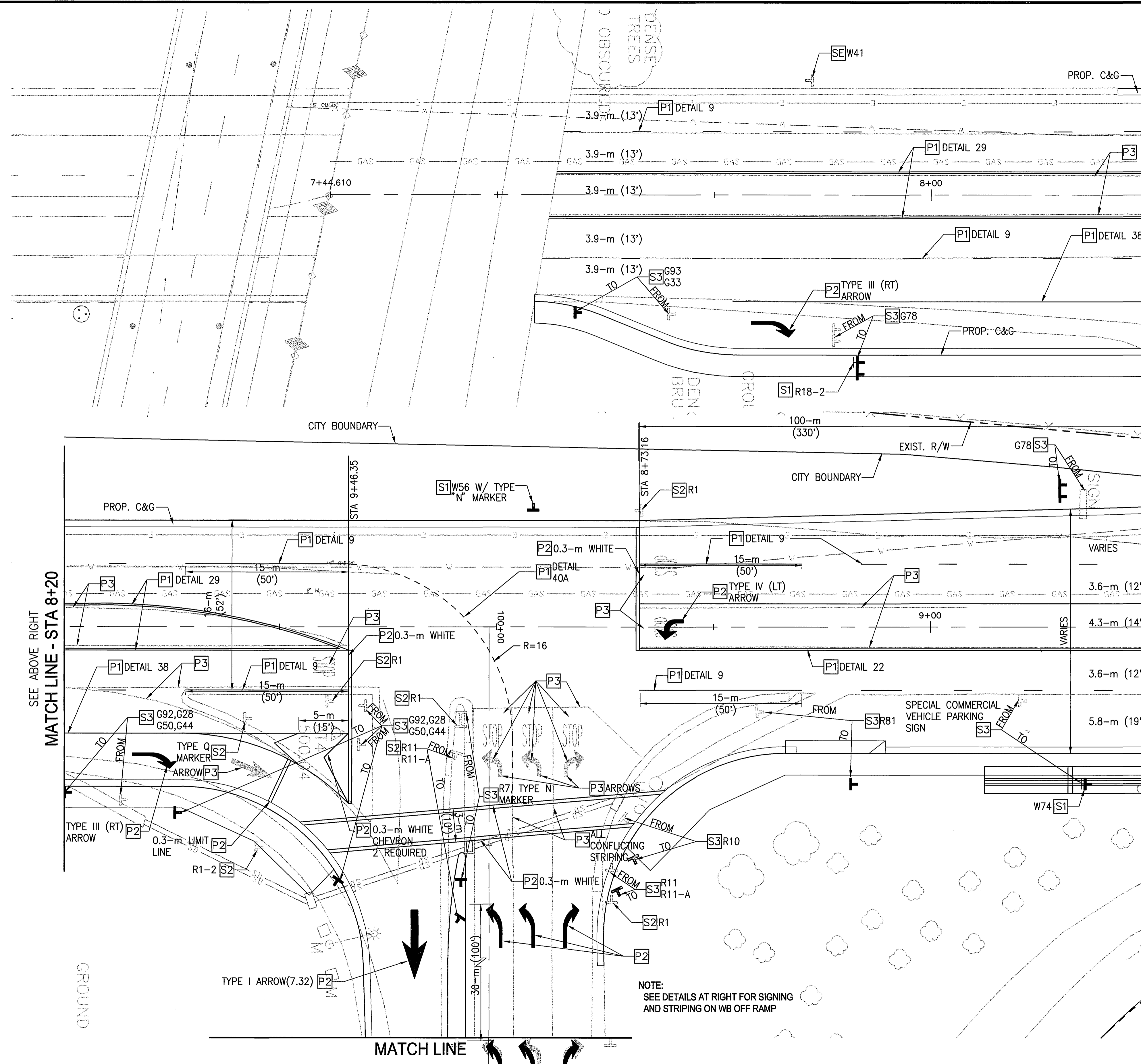
MATCH LINE - STA 9+20
SEE SHEET 2

MATCH LINE



DETAILS FOR SIGNING AND STRIPING WB OFF RAMP

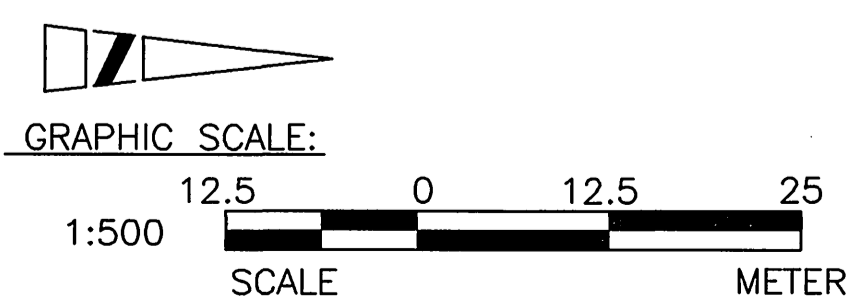
**CONTRACT NO. TE-04-04
PERMIT NO. 08-04-NMC-0679**



MATCH LINE - STA 8+20
SEE ABOVE RIGHT

GROUND

MATCH LINE



IMPORTANT NOTICE
Section 4216/4217 of the Government Code requires a Day Alert identification Number to be placed before a "Hazard to Exposure" will be made. For your Day Alert ID Number call CALL TOLL FREE TWO WORKING DAYS BEFORE YOU DIG UNDERGROUND SERVICE ALERT 1-800-227-2600



BOYLE ENGINEERING CORPORATION
1131 W. Sixth Street
Suite 285
Ontario, CA 91762-1117
(909) 933-5225

MARK	REVISIONS	APPR.	DATE

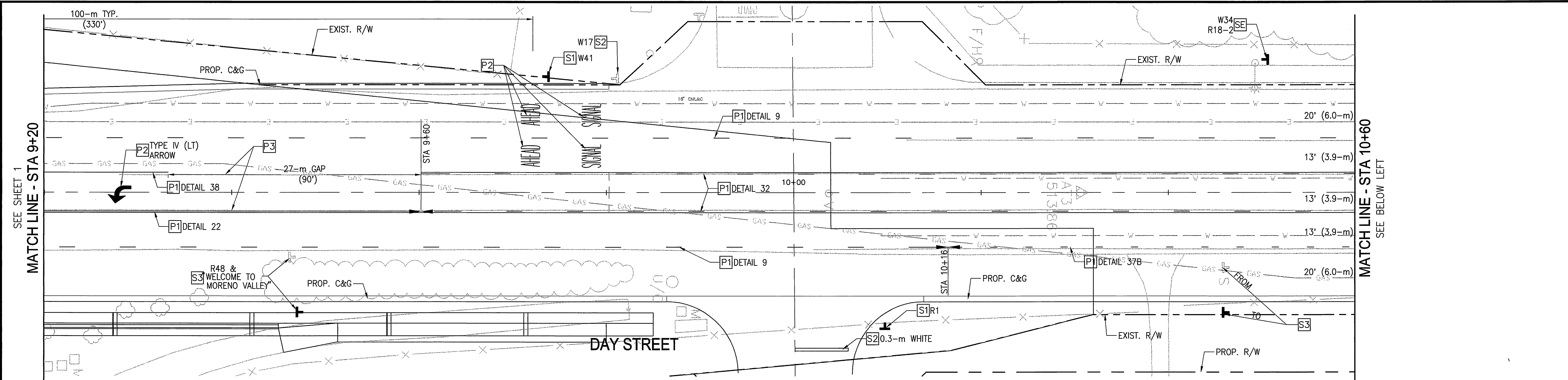
CITY OF MORENO VALLEY, CALIFORNIA PUBLIC WORKS DEPARTMENT			
APPROVED BY	BY	DATE	APPROVED BY
CITY TRAFFIC ENGINEER	EBB	8/26/04	[Signature]
ASST. CITY ENGINEER	RL	8/11/04	PUBLIC WORKS DIRECTOR
SENIOR ENGINEER	NHL	8/2/04	DATE 8/2/04 R.C.E. 20517

CITY OF RIVERSIDE, CALIFORNIA DEPARTMENT OF PUBLIC WORKS			
APPROVED BY	BY	DATE	APPROVED BY
PRINCIPAL ENGINEER	DA	7/30/04	[Signature]
P.W. INSPECTION	TC	7/30/04	CITY ENGINEER
TRAFFIC DIVISION	PC	7/19/04	R.C.E. 36170
PUBLIC UTILITIES			DATE 7/19/04

DAY STREET WIDENING IMPROVEMENTS
PAVEMENT DELINEATION PLAN
DAY STREET
STA 7+44.610 TO STA 9+20

ACCT. NO. 2390240-455023
XL-489
SHEET 1 OF 2
KP 22.0/18.5

DWG: Y:\R06\130\CA0\PlanSet\0-701.dwg USER: ralisson DATE: Jul 29, 2004 2:25pm XREFS: G-BD C-HA C-RW C-UP C-SP C-RR-TRF IMAGES:

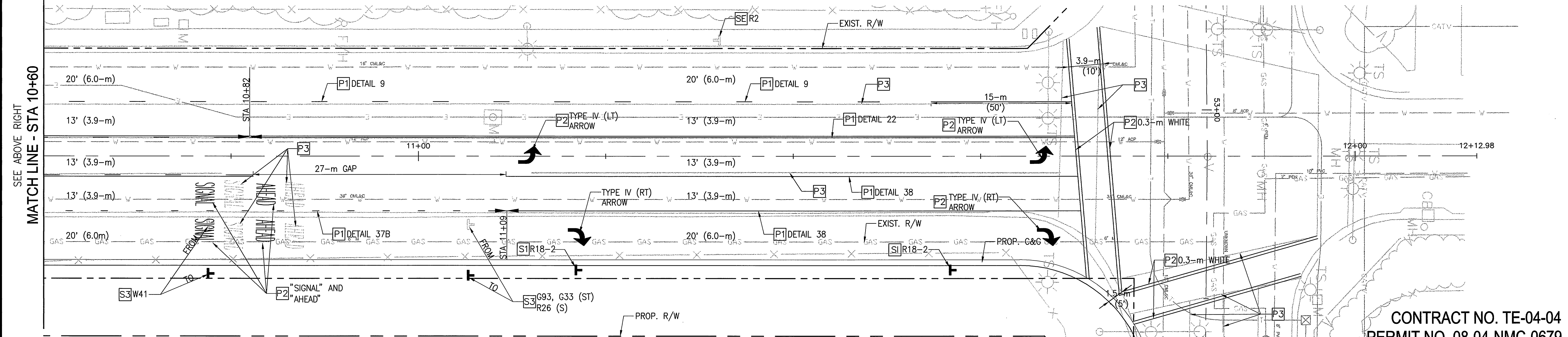


CONSTRUCTION NOTES

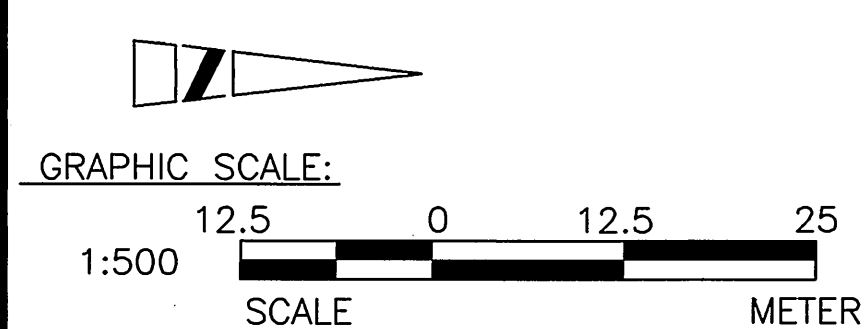
- P1 INSTALL STRIPING AND RAISED PAVEMENT MARKING PER CALTRANS DETAIL NUMBER.
- P2 INSTALL PAVEMENT OR CURB MARKING
- P3 REMOVE EXIST. CONFLICTING STRIPING AND MARKINGS
- P4 REPAINT PAVEMENT MARKINGS
- S1 INSTALL SIGN, MARKER OR CHANNELIZER PER CALTRANS CODE NO.
- S2 REMOVE SIGN, MARKER OR CHANNELIZER
- S3 RESET/RELOCATE EXISTING SIGN TO NEW POST
- SE SIGN OR MARKER TO REMAIN

LEGEND

- EXISTING ONE POST SIGN
- EXISTING TWO POST SIGN
- EXISTING STREET NAME SIGN (SNS)
- EXISTING SIGN ON LIGHT POLE
- CLASS I FLEXIBLE POST CHANNELIZER
- ONE POST SIGN
- TWO POST SIGN
- SIGN ON STREET LIGHT OR TRAFFIC SIGNAL POLE. STRAP AND SADDLE BRACKET METHOD (S & SBM)
- STREET NAME SIGN (SNS)
- EXISTING PAVEMENT MARKING-ARROW
- NEW PAVEMENT MARKING-TYPE IV (LT OR RT) ARROW
- NEW PAVEMENT MARKING-TYPE III (LT OR RT) ARROW
- CHANGE IN STRIPING DETAIL



CONTRACT NO. TE-04-04
PERMIT NO. 08-04-NMC-0679



IMPORTANT NOTICE
Section 4216/4217 of the Government Code requires a sign identification number to be issued before a permit to excavate will be valid. For your city alert ID, number call CALL TOLL FREE
TWO WORKING DAYS BEFORE YOU DIG UNDERGROUND SERVICE ALERT
1-800-227-2600



BOYLE ENGINEERING CORPORATION
1131 W. Sixth Street
Suite 285
Ontario, CA 91762-1117
(909) 933-5225

MARK	REVISIONS	APPR.	DATE
UR		RA/CW	SBF

CITY OF MORENO VALLEY, CALIFORNIA PUBLIC WORKS DEPARTMENT			
APPROVED BY	BY	DATE	APPROVED BY
CITY TRAFFIC ENGINEER	EAB	8/15/04	[Signature]
ASST. CITY ENGINEER	PC	8/15/04	PUBLIC WORKS DIRECTOR
SENIOR ENGINEER	NAC	8/12/04	DATE 8/12/04 R.C.E. 20517

CITY OF RIVERSIDE, CALIFORNIA DEPARTMENT OF PUBLIC WORKS			
APPROVED BY	BY	DATE	APPROVED BY
PRINCIPAL ENGINEER	CL	7/20/04	[Signature]
P.W. INSPECTION	PC	7/20/04	CITY ENGINEER
TRAFFIC DIVISION	PC	7/20/04	R.C.E. 38170
PUBLIC UTILITIES			DATE 7/20/04

DAY STREET WIDENING IMPROVEMENTS
PAVEMENT DELINEATION PLAN
DAY STREET
STA 9+20 TO STA 12+12.980

ACCT. NO. 2390240-455023
XL-489
SHEET 2 OF 2
KP 22.0/18.5

DWG: Y:\R06\130\CAD\PlanSet\C-702.dwg USER: ralbison C-SP IMAGES: C-UP C-RP C-RW C-HA
 DATE: Jul 29, 2004 3:00pm XREFS: G-BD