

GENERAL NOTES

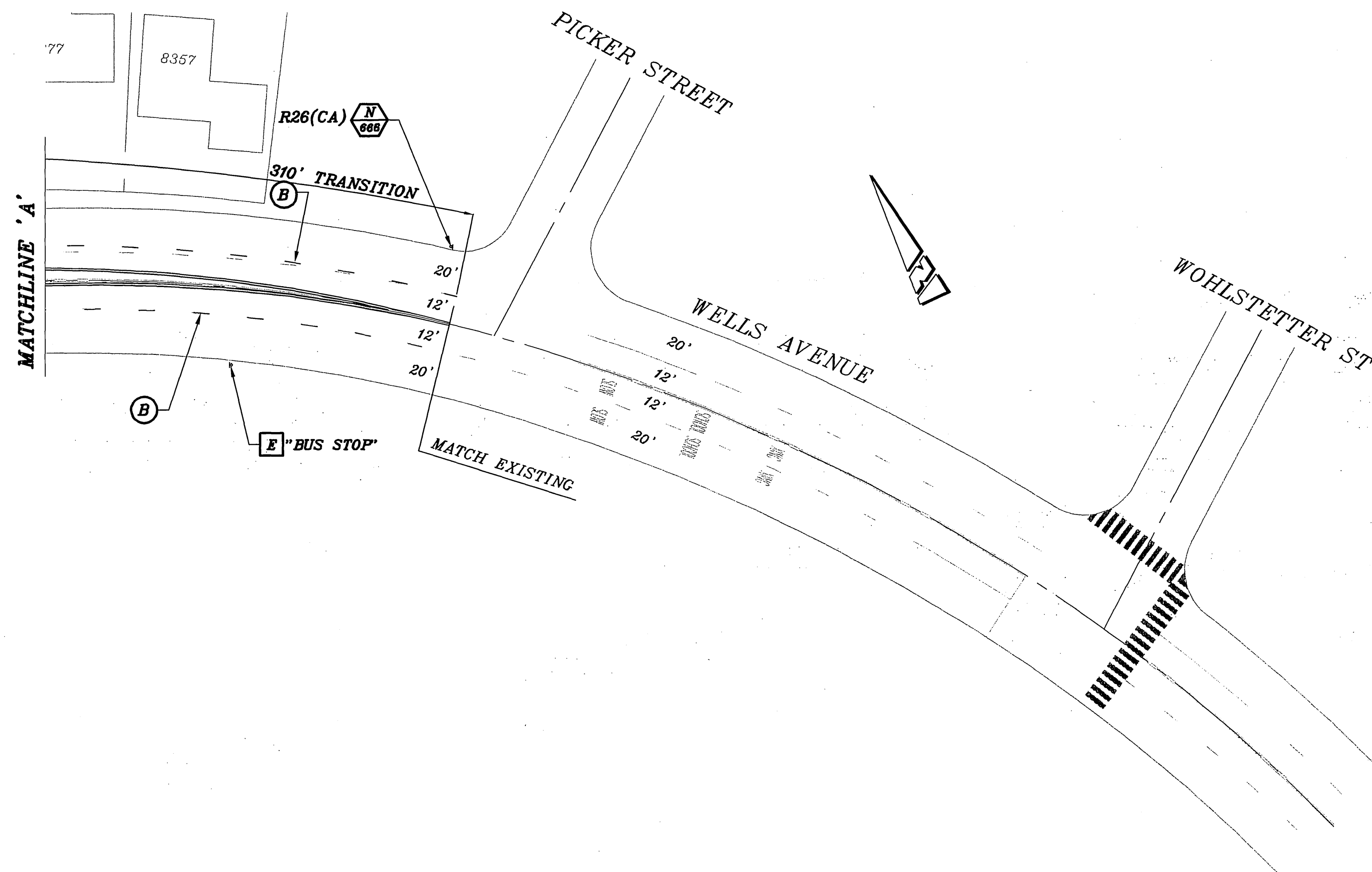
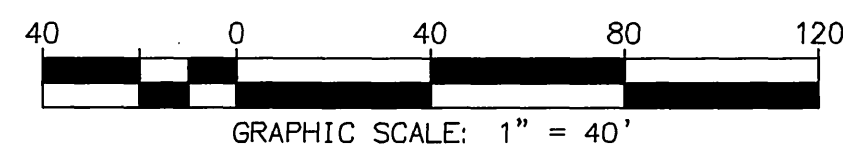
1. ALL PAVEMENT DELINEATION WORK SHALL BE PERFORMED BY THE CONTRACTOR.
2. ALL STRIPING SHALL BE PAINT APPLIED IN TWO COATS WITH A MINIMUM OF SEVEN DAYS BETWEEN COATS.
3. ALL STRIPING AND MARKINGS SHALL CONFORM TO CALTRANS 2006 STANDARD PLANS, SPECIFICATIONS AND DETAILS INCLUDING THE USE OF RAISED PAVEMENT MARKERS.
4. CONTRACTOR IS RESPONSIBLE FOR REFRESHING EXISTING PAINTED RED CURBS WITH LEGENDS FOR BUS ZONE WITHIN THE SCOPE OF THE PROJECT (IF NEEDED).
5. CONTRACTOR SHALL REMOVE CONFLICTING RAISED PAVEMENT MARKERS.

CONSTRUCTION NOTES

- [E] EXISTING EQUIPMENT TO REMAIN
- [N 686] INDICATES NEW SIGN(S) AND POST TO BE FURNISHED AND INSTALLED BY CONTRACTOR PER STD. DWG. NO. 666.

STRIPING LEGEND

- (A) 4" SOLID WHITE STRIPE (STD. PLAN A20A)
- (B) 4" DASHED WHITE STRIPE (STD. PLAN A20A, DETAIL 9)
- (C) DOUBLE YELLOW STRIPE (STD. PLAN A20A, DETAIL 22)
- (D) TWO WAY LEFT TURN STRIPE (STD. PLAN A20B, DETAIL 32)
- (E) DOUBLE YELLOW MEDIAN ISLAND STRIPE (STD. PLAN A20B, DETAIL 29)
- (F) PAINT RED CURB FOR THE LENGTH OF THE PROPOSED TRANSITION (160')



ENGINEER IN RESPONSIBLE CHARGE

GILBERT M. HERNANDEZ
 R.C.E. No. 69170 expires 6/30/08
 DATE: JUNE 12, 2007

CITY OF RIVERSIDE, CALIFORNIA DEPARTMENT OF PUBLIC WORKS			
APPROVED BY	BY	DATE	APPROVED BY
PRINCIPAL ENGINEER			<i>[Signature]</i>
ENGINEERING MANAGER	<i>[Signature]</i>	6/20/07	CITY ENGINEER
TRAFFIC DIVISION		6/13/07	DATE
DESIGNED BY	DMC	DRAWN BY	DMC
CHECKED BY			

STRIPING PLAN
WELLS AVENUE
 FROM FOOTHILL AVENUE
 TO PICKER STREET
 SCALE: 1" = 40'

ACCT. NO.
XL-552
 SHEET **1** OF **1**
 FILE NAME: XL552.DWG