



**CITY OF
NORCO**
HORSETOWN USA

10-MINUTE QUICK HITS

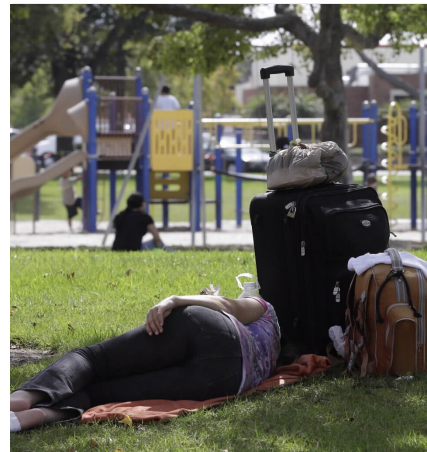
City of Norco

2019 Forum on Homelessness

October 23, 2019
Riverside, California

STATE OF HOMELESSNESS LOCALLY

- The 2019 PIT Count in Norco, CA identified a total of 11 unsheltered homeless adults which is 175% higher than the count in 2018 (4).
- 64% were White (7), 27% Multiple Race (3) and 9% unknown Race (1).
- 64% were male (7), 27% female (3) and 9% unknown gender (1).
- All but 1 were adults over the age of 24 years.



**CITY OF
NORCO**
HORSETOWN USA

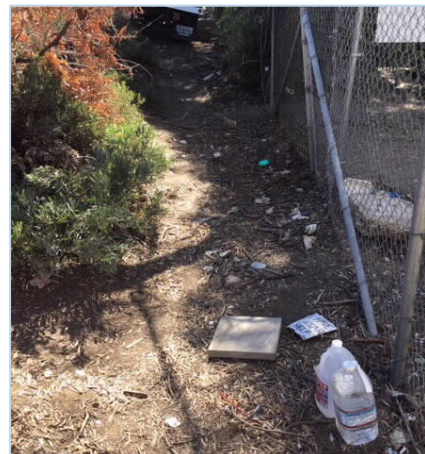
STATE OF HOMELESSNESS LOCALLY

- 1 of the 11 homeless individuals was a veteran.
- Approximately 50% were chronically homeless.
- 27% had substance abuse. (3)
- 27% experienced PTSD.(3)
- 73% had no physical disability (8) and 91% had no developmental disability (10).
- 9% were released on parole within the past 12months (1)



WHAT IS WORKING?

- Identifying those homeless who are Veterans and assisting them to receive housing.
- The City of Norco continues to work with Riverside County Sheriff Department and Riverside County Homeless Outreach Team to provide resource information to individuals who City of Norco deputies identify to be homeless.



WHAT ARE THE CHALLENGES?

- Despite these efforts to improve the accuracy of the count, the actual number of homeless individuals is estimated to be higher than PIT Count results due to ongoing challenges of locating homeless individuals.
- Mental Health issues seems to be at the top of the challenge list.
- Riverside Sheriff can get them assistance but they are right back out and poise the same problems/risks.



**CITY OF
NORCO**
HORSETOWN USA

WHAT ARE THE CHALLENGES?

- The Santa Ana River is a location that many transients and homeless plant themselves.
- This poses safety risks for themselves and others when inclement weather emerges (swift water rescues) or wildfires erupt.
- Additionally, bio security issues, clean up and environmental concerns arise primarily in areas near the riverbed.



**CITY OF
NORCO**
HORSETOWN USA

WHAT CAN THE REGION OFFER YOU?

- In a perfect world what is needed most is mental health teams, transitional housing, as well drug treatment programs.
- A method to collectively address environmental issues with all stake holders and state and federal agencies.
- Agency Neighbors who are stake holders:
 - City of Eastvale
 - City of Jurupa Valley
 - City of Corona
 - California Fish and Wildlife
 - Jurupa Community Services District
 - Riverside County Parks and Open Space
 - RCSD- Homeless Outreach Team
 - Riverside Country Fire Dept.(CalFire)
 - Army Corp of Engineers -USACOE
 - Riverside County Sheriff Department
 - Riverside Country Conservation Authority
 - Orange County Water District

