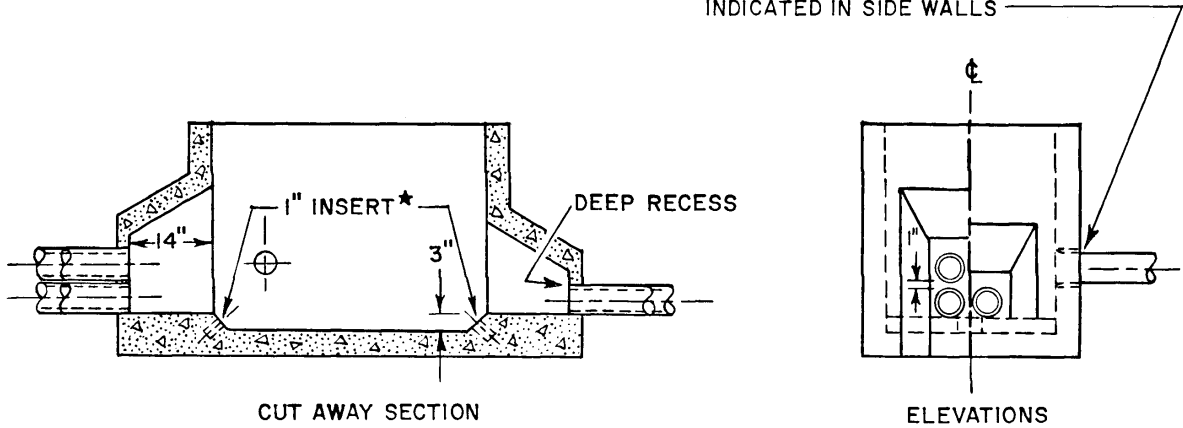


DUCT ENTRANCES TO PULL BOXES

RIVERSIDE PUBLIC UTILITIES DEPT.—UNDERGROUND STRUCTURES

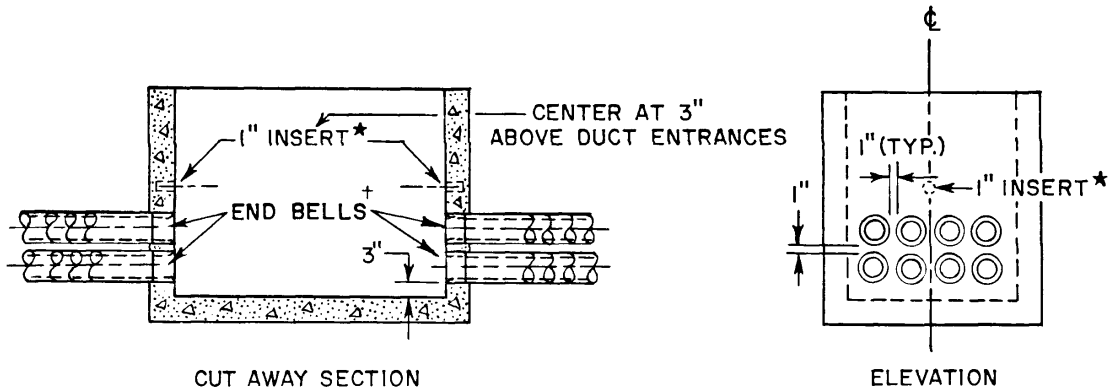
USE END BELLS[†] WHERE LATERALS ARE INDICATED IN SIDE WALLS



TYPICAL DUCT ENTRANCES FOR DEEP RECESS PULL BOXES

NOTES:

1. USE ABS/HDG ADAPTER AND END BELL[†] WITH HDG CONDUIT. CONCRETE ENCASE ADAPTER, ABS CONDUIT AND END BELL.
2. DUCTS SHALL ENTER AND LEAVE PULL BOXES IN LINE AND PARALLEL TO FLOOR.



DUCT ENTRANCES FOR SPECIAL USE
(PERMISSION FOR USE IS REQUIRED)

[†] END BELLS TO BE OF THE SAME MATERIAL AS THE DUCT TO WHICH THEY ARE ATTACHED.

* INSERTS TO BE "RICHMOND COIL TYPE".

[Signature]
GEN. SUPT. CHIEF ENGINEER