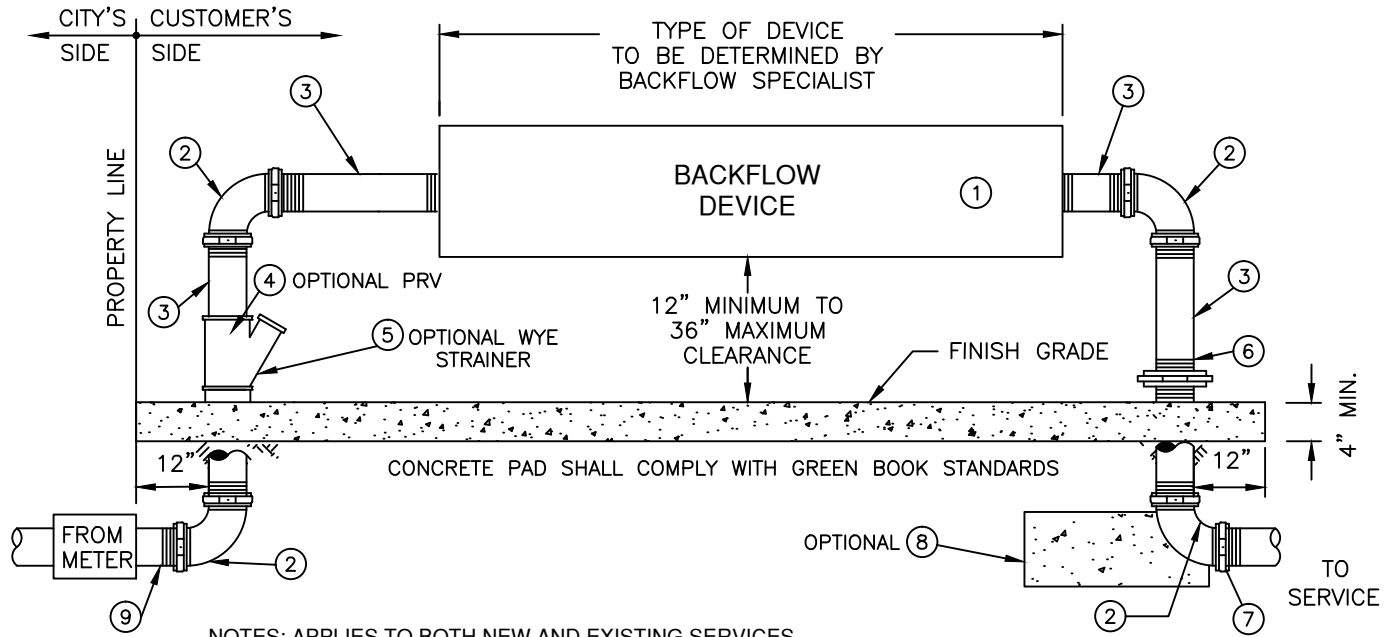


TYPICAL BACKFLOW DEVICE CONFIGURATION



NOTES: APPLIES TO BOTH NEW AND EXISTING SERVICES.

1. PRIOR TO INSTALLATION, LOCATION OF THE BACKFLOW DEVICE SHALL BE SUBJECT TO APPROVAL OF THE PROGRAM SPECIALIST (951) 351-6320/6282. DEVICE SHALL BE LOCATED AS CLOSE TO THE METER AS PRACTICAL (MIN. 18", MAX. 24" BACK OF PROPERTY LINE.)
2. ANY DEVIATION FROM NOTE #1 IS SUBJECT TO CONDITIONS AS DESCRIBED WITHIN CWD-616-2.
3. INSPECTION OF PLUMBING BETWEEN METER AND BACKFLOW DEVICE IS REQUIRED PRIOR TO BACKFILLING OR POURING CONCRETE.
4. MATERIALS SHALL BE IN COMPLIANCE WITH THE APPROVED MATERIALS SPECIFIED BELOW.
5. THE DEVICE MUST BE INSPECTED AND TESTED IMMEDIATELY AFTER INSTALLATION. TO SCHEDULE AN APPOINTMENT CALL (951) 351-6320/6282.

ITEM	EACH	DESCRIPTION
①	1	BACKFLOW DEVICE
②	4	90 DEGREE ELBOW, BRASS OR HARD DRAWN COPPER
③	4	RISER & NIPPLES, BRASS OR HARD DRAWN COPPER
④	1	PRV VALVE (FOR PRESSURE IN EXCESS OF 80 PSI)

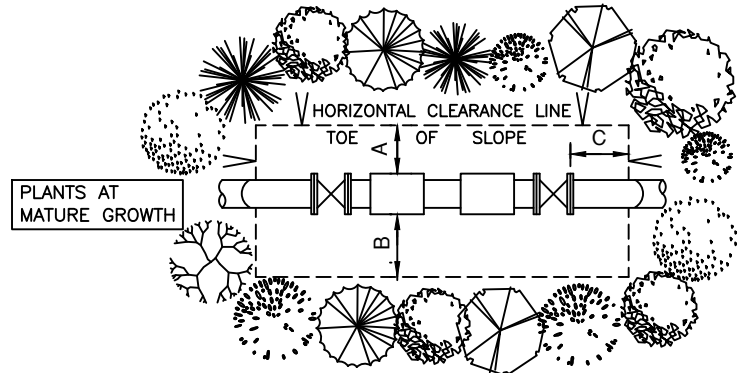
ITEM	EACH	DESCRIPTION
⑤	1	OPTIONAL WYE STRAINER
⑥	1	BRASS OR COPPER UNION (SEE NOTE *)
⑦	1	PVC MALE ADAPTER (MALE THREADED x FEMALE SLIP)
⑧	1	CONCRETE THRUST BLOCK (OPTIONAL)
⑨	1	SERVICE LINE, BRASS OR HARD DRAWN COPPER

ADEQUATE AND SAFE CLEARANCE MUST BE PROVIDED TO PERMIT TESTING AND REPAIR WORK

MINIMUM CLEARANCE SCHEDULE			
SIZE	A	B	C
3/4" THROUGH 2 1/2"	12"	18"	12"

NOTE *

A SECOND UNION ON OPPOSITE RISER MAY BE REQUIRED IF CLEARANCE REQUIREMENTS ARE NOT MAINTAINED.



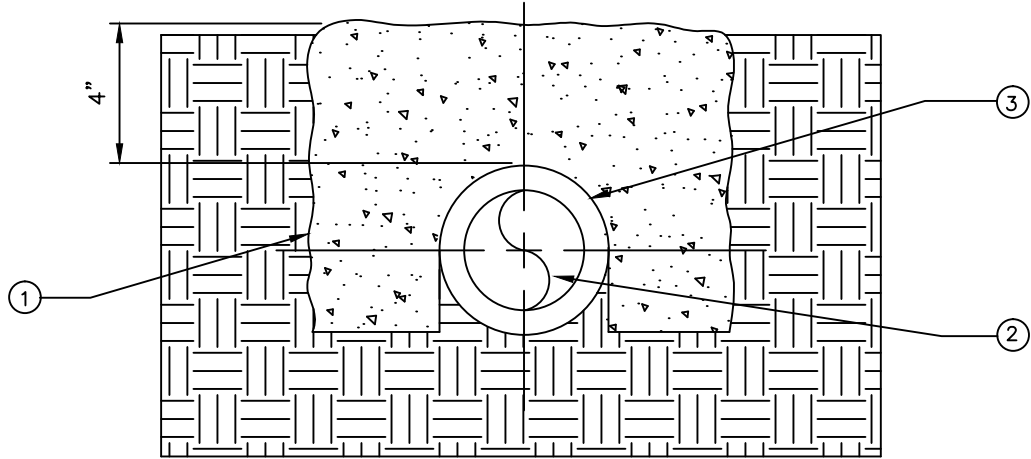
OVERHEAD VIEW OF CLEARANCE REQUIREMENTS



WATER DISTRIBUTION & TRANSMISSION
PIPELINE CONSTRUCTION METHODS

BACKFLOW PREVENTION ASSEMBLY
3/4" - 2 1/2" ABOVE GROUND INSTALLATION

PRIVATE SERVICE LINE ENCASEMENT



ITEM	DESCRIPTION
①	4" CONCRETE ENCASEMENT ALL SIDES.
②	BRASS OR COPPER WATER SERVICE LINE
③	CORROSION BARRIER

IF DETERMINED BY PUBLIC UTILITIES THAT A BACKFLOW DEVICE IS UNABLE TO BE INSTALLED IN ACCORDANCE WITH CWD-616-1, NOTE 1, AN ALTERNATIVE LOCATION MAY BE APPROVED AND THE FOLLOWING CONDITIONS SHALL APPLY.

CONDITIONS:

1. A DRAWING DEPICTING THE PROPOSED PATH OF PIPING FROM THE WATER METER TO THE BACKFLOW DEVICE AND THE FINAL LOCATION OF DEVICE MUST BE SUBMITTED TO PUBLIC UTILITIES FOR APPROVAL.
2. ONCE APPROVED, INSTALLER MUST COORDINATE WITH THE BACKFLOW PROGRAM SPECIALIST TO OVERSEE, INSPECT, AND DOCUMENT THE INSTALLATION. CORROSION BARRIER TO BE INSPECTED PRIOR TO POURING OF CONCRETE.
3. MATERIALS SHALL REMAIN IN COMPLIANCE AS SPECIFIED WITHIN CWD-616-1.
4. MATERIALS SHALL BE IN COMPLIANCE WITH THE APPROVED MATERIALS SPECIFIED ON THE TABLE ABOVE.



WATER DISTRIBUTION & TRANSMISSION
PIPELINE CONSTRUCTION METHODS

BACKFLOW PREVENTION ASSEMBLY
ALTERNATIVE LOCATION INSTALLATION