

MANHOLE REQUIREMENTS (PRECAST)

REVISION: Updated Table, Notes, & Details

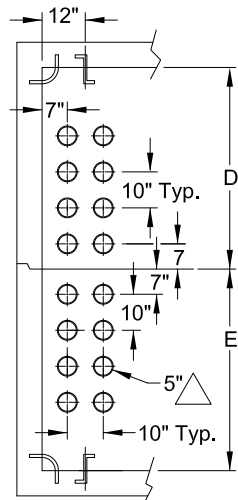
CHECKED BY (ENGINEERING): SJ

DATE: 04/17/17

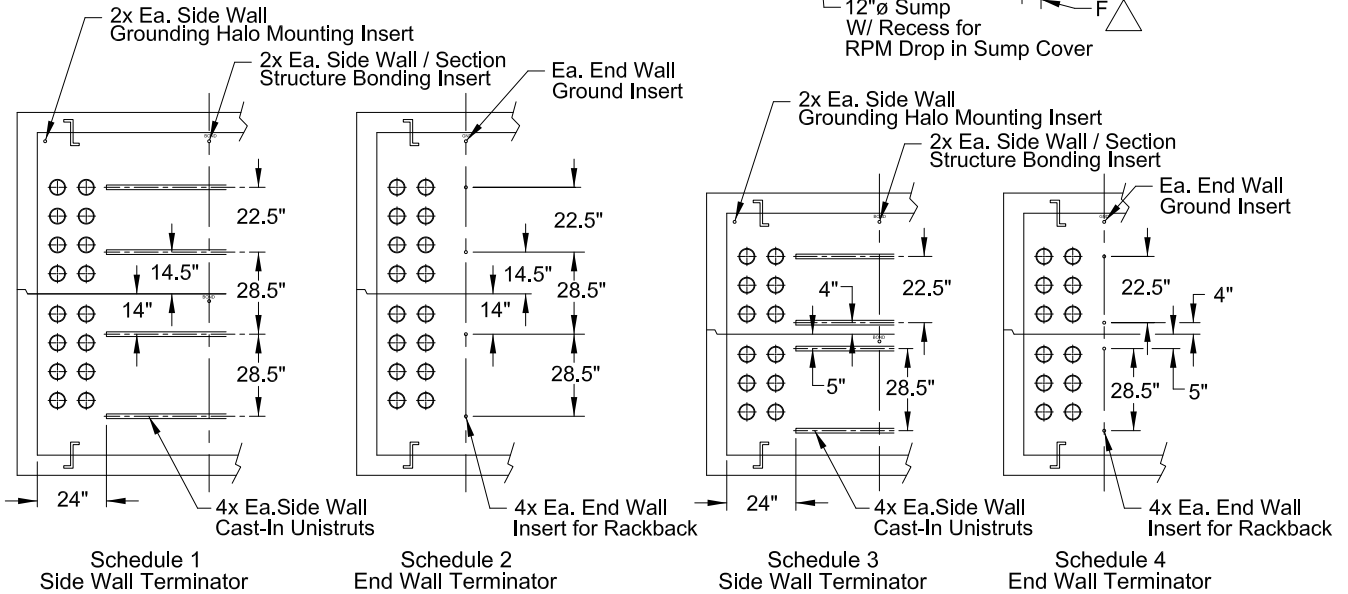
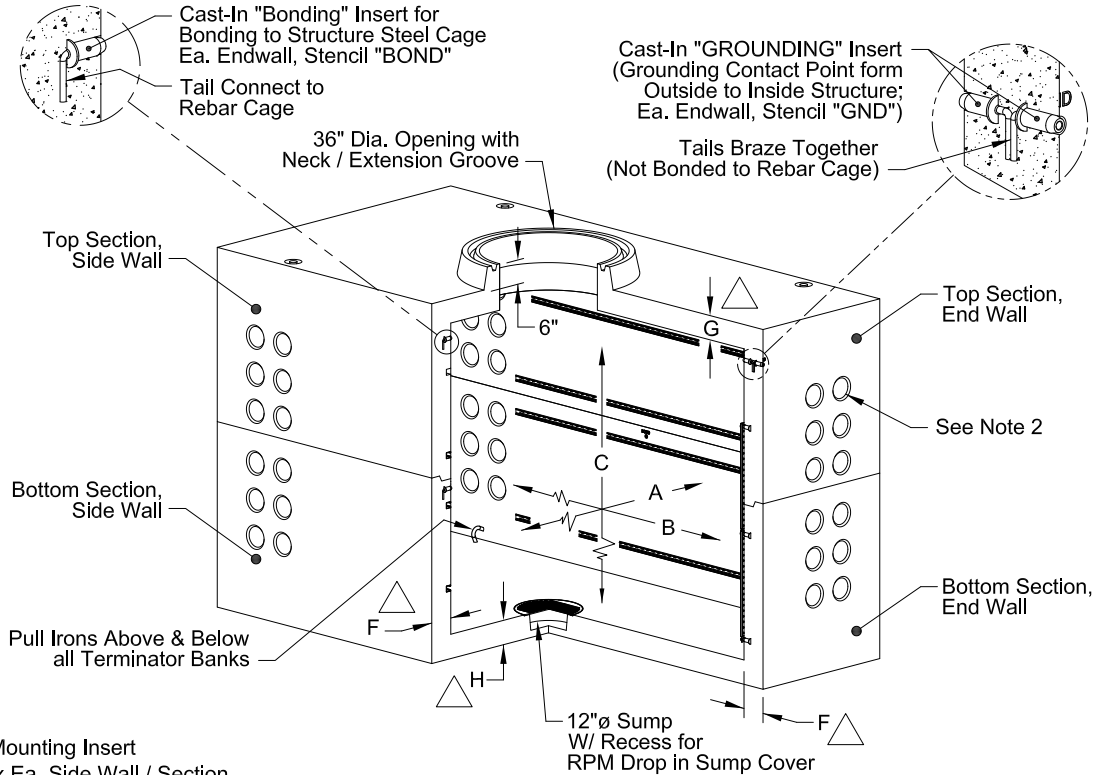
CHECKED BY (FIELD): RJ

APPROVED BY: *Stephen E. Saford*

PREPARED BY: SJR



Typical Conduit & Pull Iron Dimensions



Item No.	Nominal Size "Inside" (Depth x Width x Height)	Manufacturer	Terminator Schedule		Dimensions								
			Side Wall	End Wall	A	B	C	D	E	F	G	H	
10	6' x 10' x 7' Manhole	Jensen Oldcastle											
11	6' x 12' x 7' Manhole	Jensen	3	4	72"	144"	84"	42"	42"	5"	7"	7"	
		Oldcastle						39"	45"	5"	6.5"	6"	
12	7' x 14' x 8' Manhole	Jensen	1	2	84"	168"	96"	48"	48"	5"	7"	7"	
		Oldcastle						48"	48"	5"	8"	7"	

- Notes:
- See UGS-005 for RPU Approved manufacturers of precast Manhole structures and catalog numbers.
 - Top Endwall terminator approximate depth is 41" (with 12" Neck Ring).
 - Precast Structure shall include method to install grounding halo.