

TYPICAL INSTALLATION OF TRAFFIC TYPE PULL BOX IN MAIN LINE DUCTS

REVISION: Updated Format. Approved for Maintenance Only

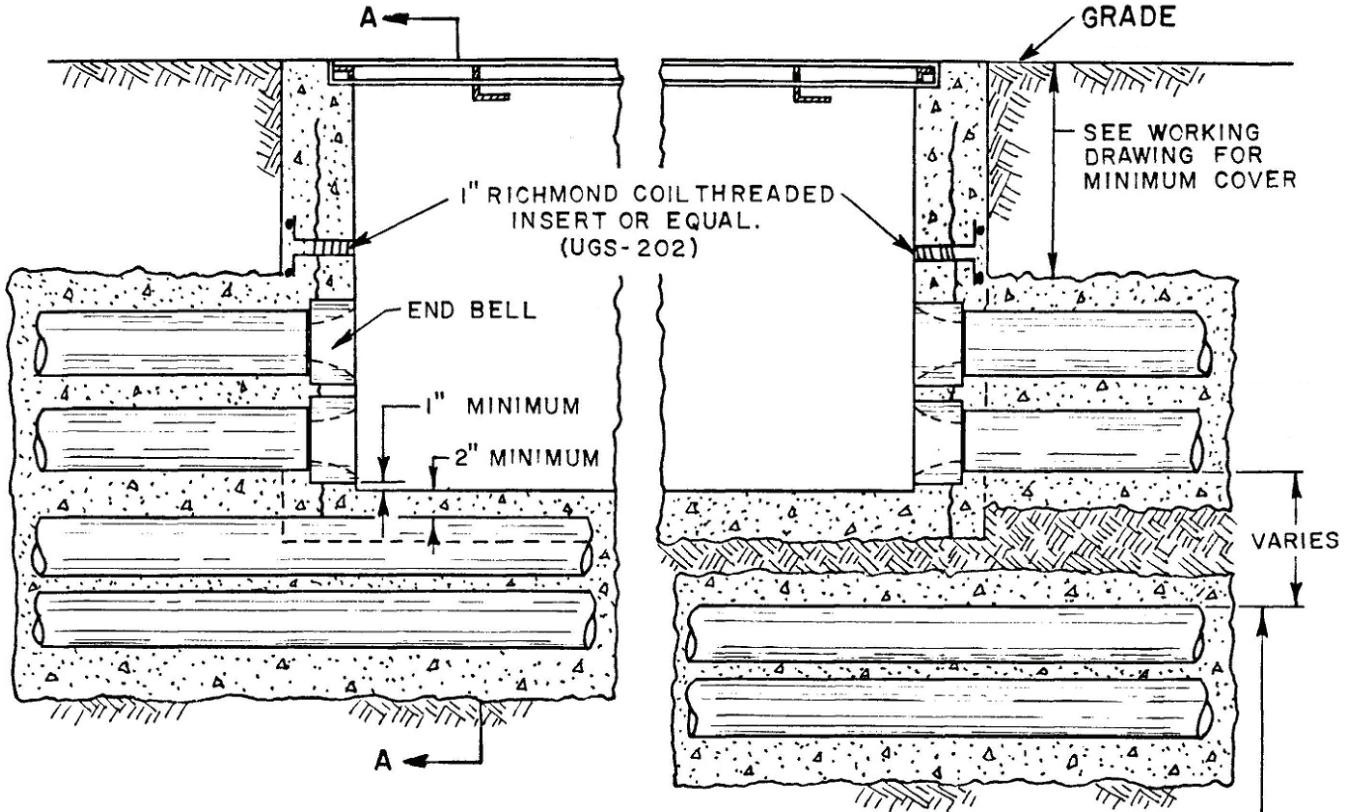
CHECKED BY (ENGINEERING): SJ

DATE: 08/28/18

CHECKED BY (FIELD): JH

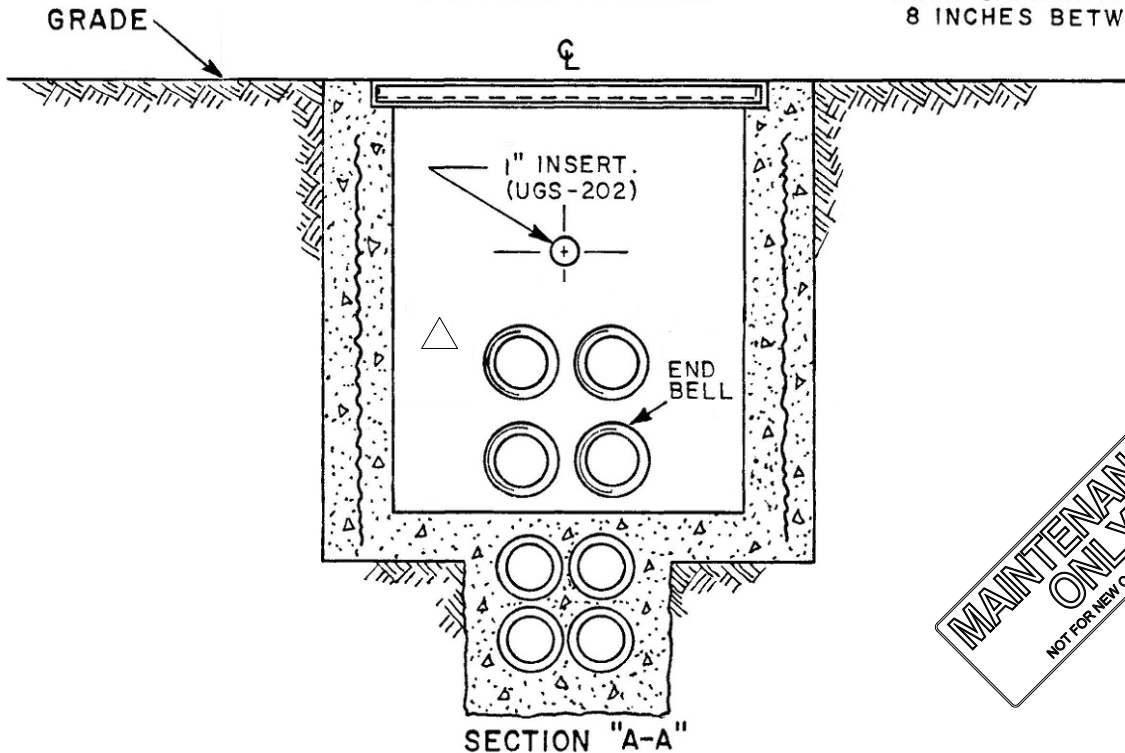
PREPARED BY: SJR

APPROVED BY: *Stephen E. Saford*



TYPICAL SECTIONS

BACKFILL AS REQUIRED WHEN SEPARATION EXCEEDS 8 INCHES BETWEEN DUCTS



MAINTENANCE ONLY
 NOT FOR NEW CONSTRUCTION