

MATERIALS PER HANGER:		
Item No.	Description / Material	Qty.
1	2" X 1/2" FRP Plate	3
2	2" X 2" FRP Sq. Tube	1
3	3/4" - 10 Threaded Rod	5
4	1" O.D. FRP Tube	15
5	3/4" Cast in or Expansion Anchor	4
6	1 3/4" X 1 3/4" Angle Iron	1
7	3/4"-10 x 2.00" Bolt	1
8	3/4"-10 x 2.75" Bolt	1
9	3/4" Washer	11
10	3/4" Split Lock Washer	1
11	3/4"-10 Nut	11

\* Length and/or Quantity as Needed

REVISION: Updated Format, Notes & Details

CHECKED BY (ENGINEERING): JRS

DATE: 01/24/24

CHECKED BY (FIELD): YG

PREPARED / REVISED BY: SJR

APPROVED BY: Rudy Villavicencio

# SUPPORTS FOR CONDUITS ON BRIDGES

REVISION: Updated Format, Notes & Details

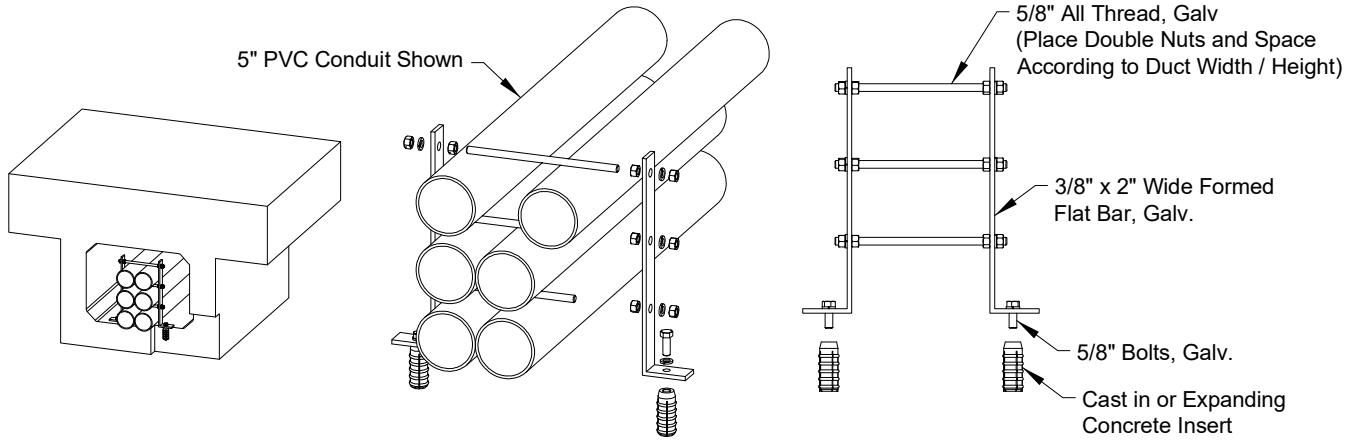
CHECKED BY (ENGINEERING): JRS

DATE: 01/24/24

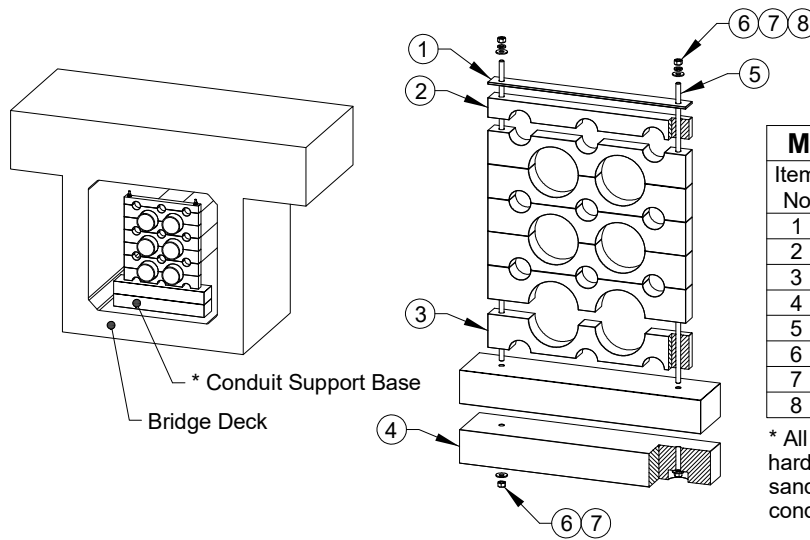
CHECKED BY (FIELD): YG

PREPARED / REVISED BY: SJR

APPROVED BY: *Rudy Villavicencio*



**FABRICATED FLOOR MOUNTED CONDUIT SUPPORT BRACKET**



MATERIALS PER 5" CONDUIT HANGER:			
Item No.	Description / Material	Size (W x H x D)	Qty.
1	Steel Plate	23.00" x 0.25" x 2.00"	1
2	Conduit Top Cover	23.00" x 2.25" x 2.00"	1
3	Conduit Spacer	23.00" x 3.88" x 2.00"	6
4	Bottom Base	23.00" x 3.88" x 6.00"	2
5	5/8" All Thread	5/8"-11 (Length Varies)	2
6	5/8" Nut	5/8"-11	4
7	Washer	5/8"-11	4
8	Split Lock Washer	5/8"-11	2

\* All sections shall be bolted to base using stainless steel hardware. Secure epoxy base to cell deck by first sandblasting deck (remove sandblasting media at location of conduit support base before is to be epoxied to cell deck).

**MANUFACTURED FLOOR MOUNTED CONDUIT SUPPORT BRACKET**

**Notes:**

1. Conduit to be for enclosed installations - (isolated from public and maintenance crews) type ABS, PVC or HDG.
2. Supports to be at 7 ft. maximum spacing.
3. Spacers when required, to be placed at each support.
4. No vertical spacing required for HDG or Schedules 80 PVC conduits except as required for clearances at expansion joint installations. Both vertical and horizontal spacing required for all other type conduit.
5. Dimensions "A" and "B" to be determined from type, size and number of conduit installed. To allow lineal contraction and expansion conduit must be snug but not tight.
6. Peen, center punch or spot weld at thread line of all bolts, to lock nuts in place.
7. Expansion joints (as recommended by the conduit manufacturer and approved by RPU Engineering to be installed at 100 ft. (maximum) intervals or at each bridge expansion joint, whichever is the shorter dimension.
8. Expansion joints shall be installed per manufacturer's specifications. Compensating for ambient temperature.
9. Exterior conduit supports (Sear Plates) to be installed on outside of bridge abutment (See UGS-141 for Details).
10. Conduit configuration to be shown on working drawings. Typical illustrations shown are for illustrating material required.
11. Supports to be hot dipped galvanized after fabrication. All bolts, studs, nuts, etc. to be Stainless Steel.