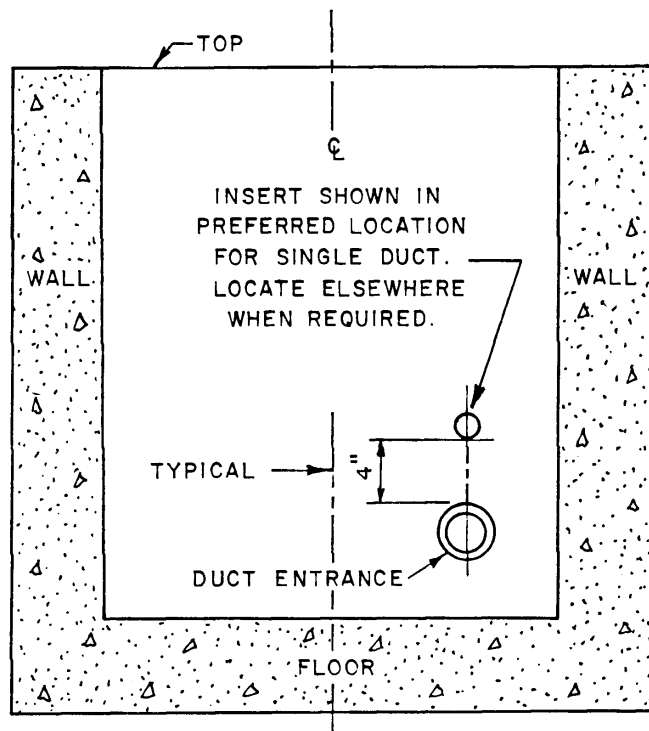
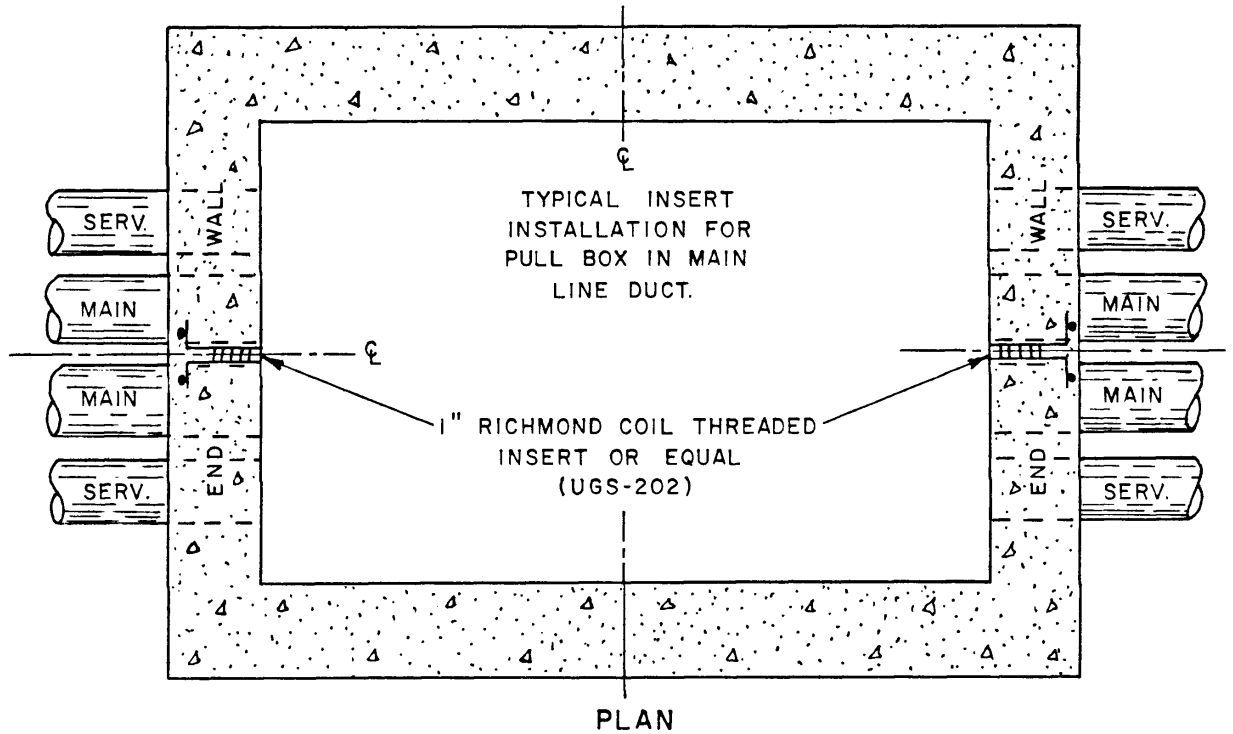


INSERT SCHEDULE FOR  
PULL BOXES

RIVERSIDE PUBLIC UTILITIES DEPT.-UNDERGROUND STRUCTURES



NOTE;

2 INSERTS ARE  
REQUIRED FOR EACH  
PULL BOX REGARDLESS  
OF SIZE OR NUMBER  
OF DUCTS ENTERING.  
ONE INSERT TO BE  
LOCATED ON EACH END  
WALL - 4" CLEARANCE  
ABOVE HIGHEST DUCT.

TYPICAL SECTION SHOWING END WALL